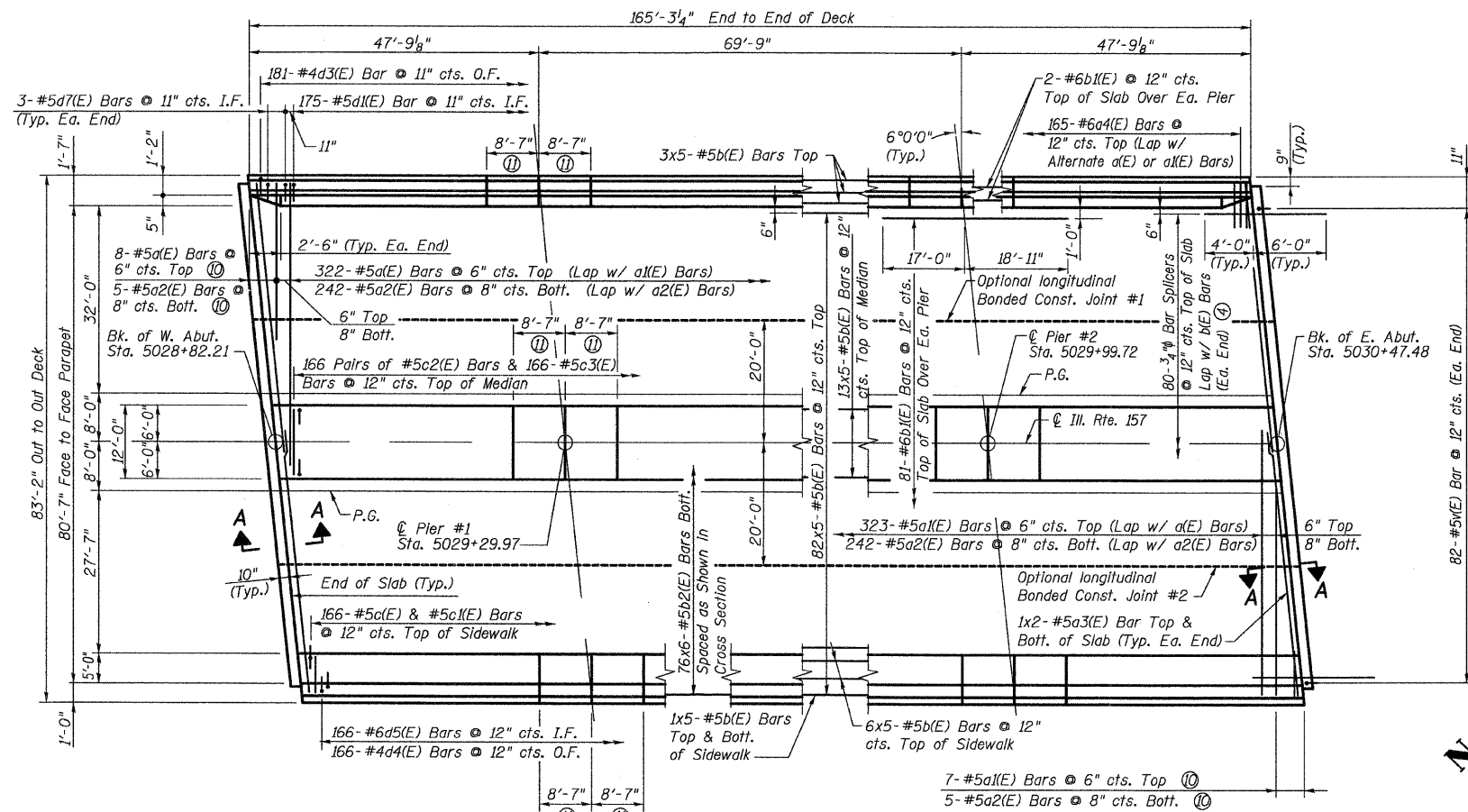


F.A.P. RTE.	SEC.	COUNTY	TOTAL SHEETS	SHEET NO.
592	121-1R, 121HV	ST. CLAIR	239	142
F.H.W.A. REGION 7		ILLINOIS FED. AID PROJECT		

SHEET No. 6  
SHEETS: 23

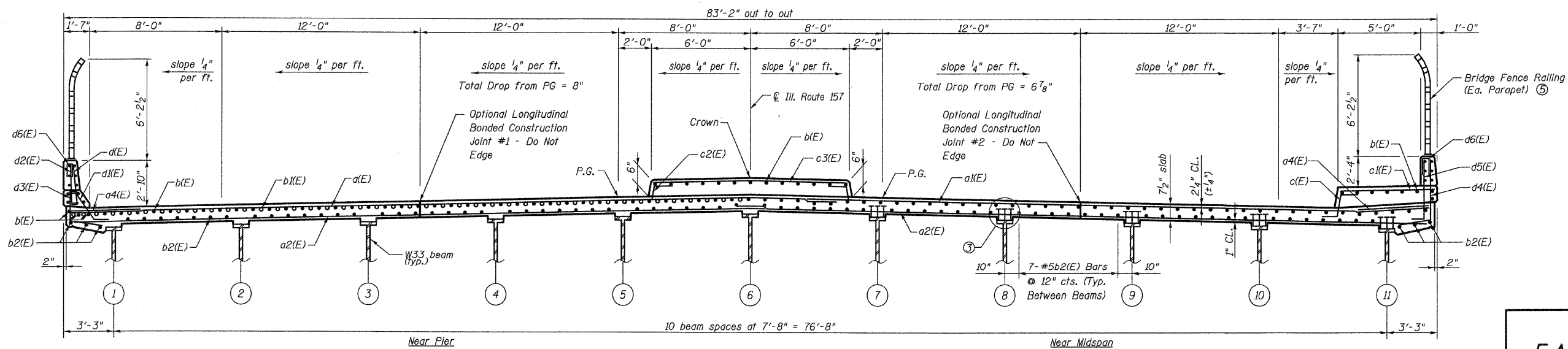
STATE OF ILLINOIS  
DEPARTMENT OF TRANSPORTATION



PLAN

NOTES:

- ① For parapet reinforcement, median detail, and sidewalk detail, see sheet 7 of 20.
- ② For diaphragm elevations, Section A-A, and bill of materials, see sheet 8 of 20.
- ③ See sheet 11 of 20 for shear stud details.
- ④ See sheet 16 of 20 for bar splicer details.
- ⑤ See sheet 9 of 20 for bridge fence railing details.
- ⑥ Reinforcement bars designated (E) shall be epoxy coated.
- ⑦ Bars indicated thus 17x3-#5 etc. indicates 17 lines of bars with 3 lengths per line.
- ⑧ O.F. denotes outside face.  
I.F. denotes inside face.
- ⑨ Min. bar lap lengths in deck: #5-1'-8"  
#6-2'-0"
- ⑩ Order a(E), a1(E), & a2(E) bars full length. Cut bars in field to fit skew and use remainder of bars at other end of deck
- ⑪ Dimension shown to parapet construction joints, 1" deep sawed joint in median and 1" deep sawed joint in sidewalk. Typical at each pier. See sheet 7 of 20 for details.



TYPICAL SECTION THRU BRIDGE DECK  
(Looking East)

**SUPERSTRUCTURE**  
F.A.P. 592 (IL Rte. 157) OVER  
UNION PACIFIC RAILROAD  
SECTION 121-1R, 121HV  
ST. CLAIR COUNTY  
STATION 5029+64.85  
STRUCTURE NO. 082-0303