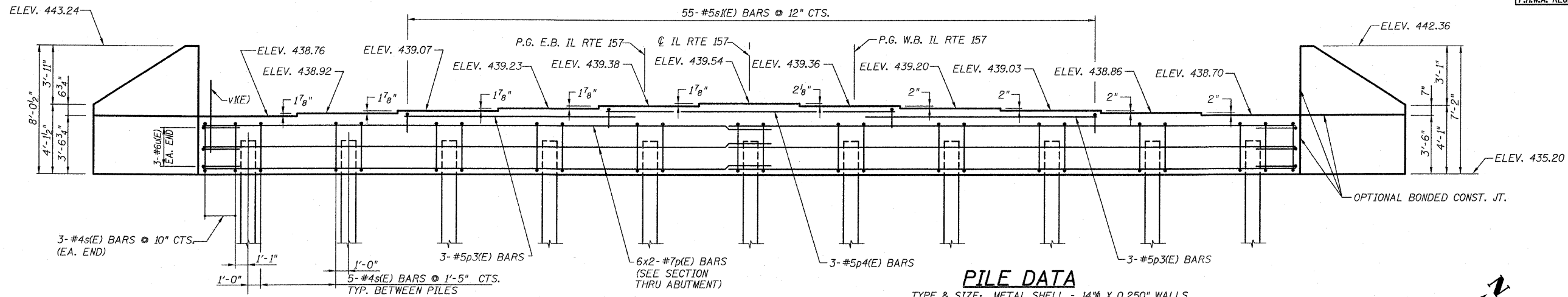


F.A.P. RTE.	SEC.	COUNTY	TOTAL SHEETS	SHEET NO.
592	121-1R, 121HV	ST. CLAIR	239	148
F.H.W.A. REGION 7		ILLINOIS FED. AID PROJECT		

SHEET NO. 12
SHEETS: 23

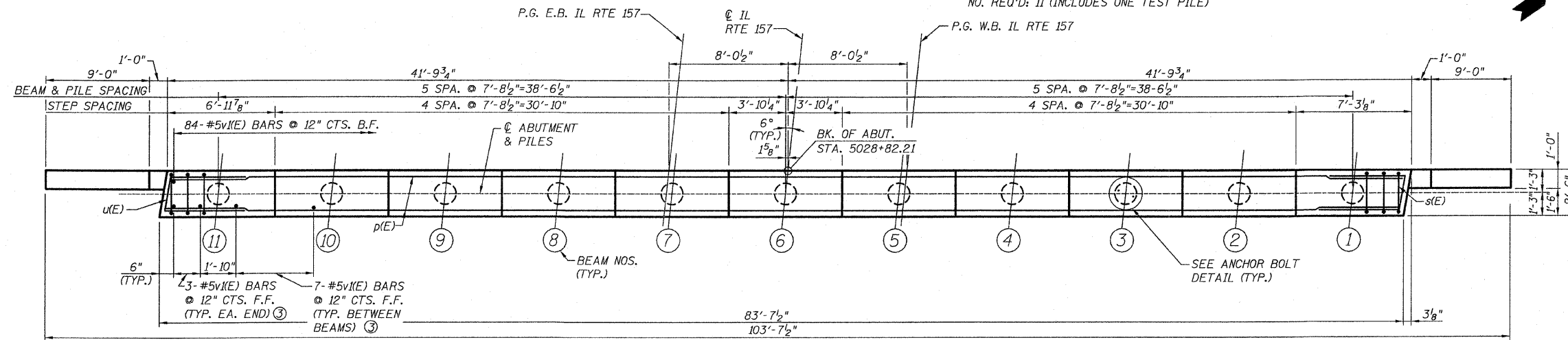
STATE OF ILLINOIS
DEPARTMENT OF TRANSPORTATION



PILE DATA

TYPE & SIZE: METAL SHELL - 14" X 0.250" WALLS
 NOMINAL REQUIRED BEARING: 390 kips
 ALLOWABLE RESISTANCE AVAILABLE: 110 kips
 EST. LENGTH: 80'
 NO. REQ'D: 11 (INCLUDES ONE TEST PILE)

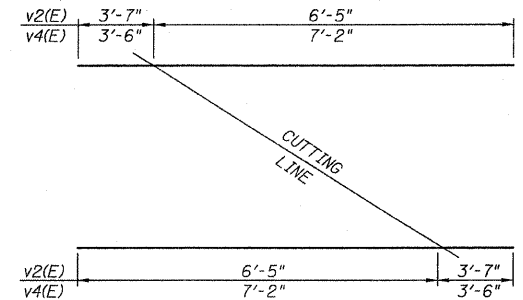
ELEVATION
(LOOKING WEST)



PLAN

BILL OF MATERIAL

BAR	NO.	SIZE	LENGTH	SHAPE
h(E)	16	#5	12'-8"	---
h1(E)	16	#5	11'-9"	---
p(E)	12	#7	44'-1"	---
p3(E)	6	#5	18'-5"	---
p4(E)	3	#5	22'-9"	---
s(E)	56	#4	11'-5"	□
s1(E)	55	#5	5'-2"	□
u(E)	6	#6	9'-6"	□
v1(E)	160	#5	4'-4"	---
v2(E)	9	#5	10'-0"	---
v3(E)	4	#5	6'-9"	---
v4(E)	9	#5	10'-8"	---
v5(E)	4	#5	7'-5"	---
CONCRETE STRUCTURES				Cu. Yd. 34.6
REINFORCEMENT BARS EPOXY COATED				Pound 3460
FURNISHING METAL SHELL PILES 14" X 0.250"				Foot 800
TEST PILE METAL SHELL				Each 1
DRIVING PILES				Foot 800
STRUCTURE EXCAVATION				Cu. Yd. 155

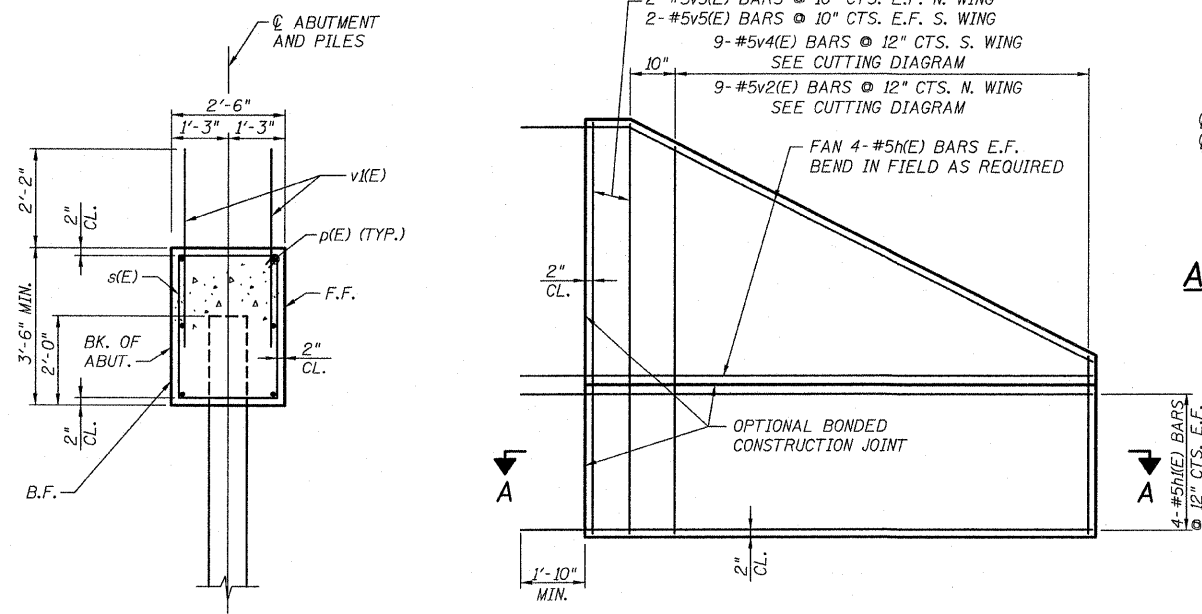


CUTTING DIAGRAM BARS v2(E) & v4(E)

ORDER v2(E) AND v4(E) BARS FULL LENGTH.
 CUT BARS AS SHOWN, USE REMAINDER IN OPPOSITE FACE.

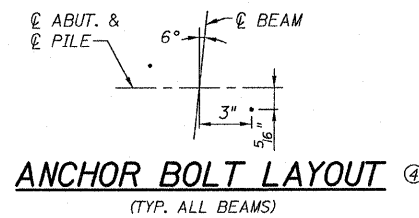
NOTES:

- POUR STEPS MONOLITHICALLY WITH CAP.
- ALL EDGES SHALL HAVE STANDARD 3/8" CHAMFER.
- PLACE v1(E) BARS TO CLEAR FLANGE OF BEAM.
- SPACE REINFORCEMENT IN CAP TO MISS ANCHOR BOLTS.
- E.F. DENOTES EACH FACE.
F.F. DENOTES FRONT FACE.
B.F. DENOTES BACK FACE.
- REINFORCEMENT BARS DESIGNATED (E) SHALL BE EPOXY COATED.
- BAR LAPS - #7 BAR - 4'-10".
- BAR INDICATED THUS 26x2 DENOTES 26 LINES OF BARS WITH 2 LENGTHS PER LINE.
- FOR METAL SHELL PILE DETAILS & REINFORCEMENT, SEE SHEET 15 OF 20.

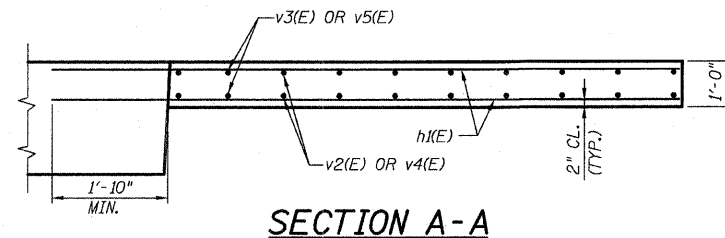
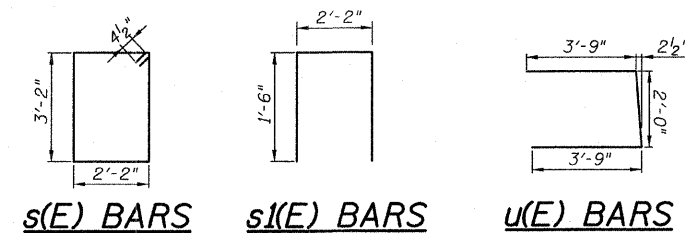


SECTION THRU ABUTMENT

WINGWALL ELEVATION
(TYPICAL EACH WING)



ANCHOR BOLT LAYOUT ④
(TYP. ALL BEAMS)



SECTION A-A

WEST ABUTMENT DETAILS
 F.A.P. 592 (IL Rte. 157) OVER
 UNION PACIFIC RAILROAD
 SECTION 121-1R, 121HV
 ST. CLAIR COUNTY
 STATION 5029+64.85
 STRUCTURE NO. 082-0303