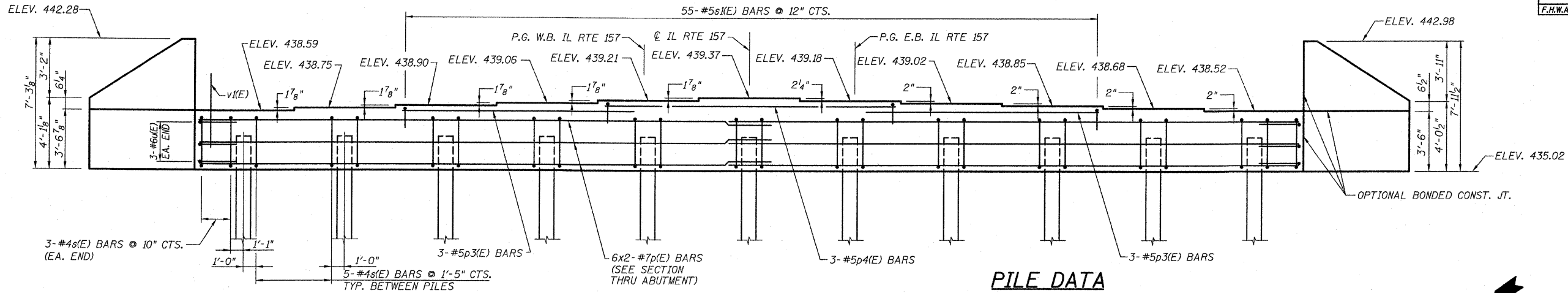


STATE OF ILLINOIS
DEPARTMENT OF TRANSPORTATION

F.A.P. RTE.	SEC.	COUNTY	TOTAL SHEETS	SHEET NO.
592	121-1R 121HVB	ST. CLAIR	239	149
F.H.W.A. REGION 7		ILLINOIS FED. AID PROJECT		

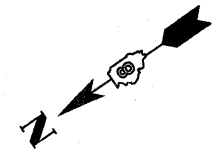
SHEET NO. 13
SHEETS: 23



ELEVATION
(LOOKING EAST)

PILE DATA

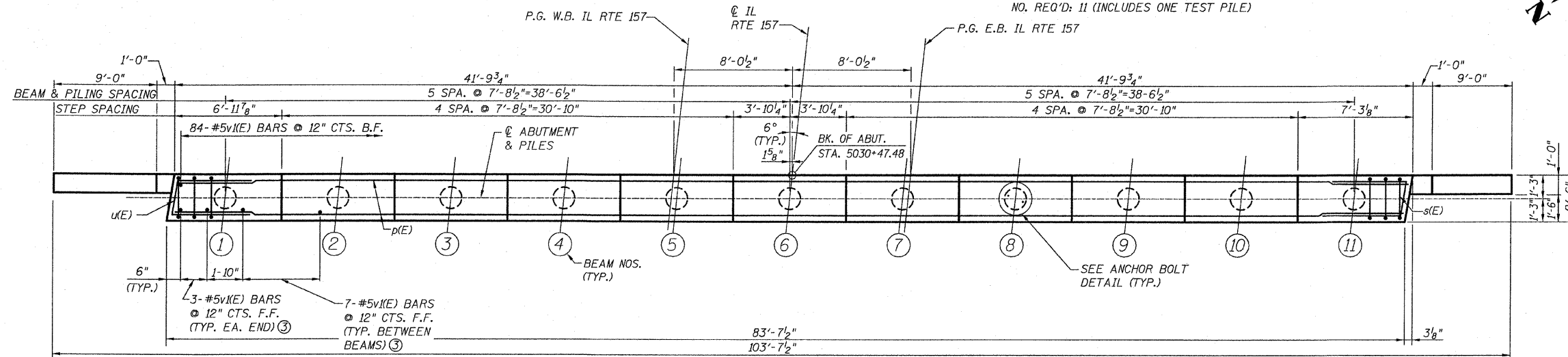
TYPE & SIZE: METAL SHELL - 14" X 0.250" WALLS
NOMINAL REQUIRED BEARING: 390 kips
ALLOWABLE RESISTANCE AVAILABLE: 110 kips
EST. LENGTH: 93'
NO. REQ'D: 11 (INCLUDES ONE TEST PILE)



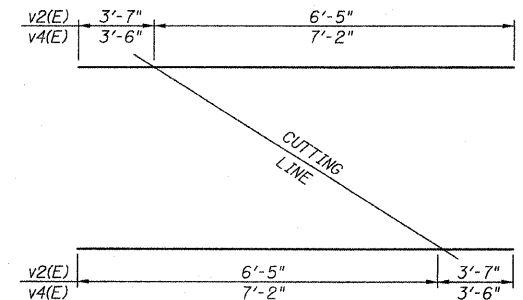
BILL OF MATERIAL

BAR NO.	SIZE	LENGTH	SHAPE
h(E)	#5	12'-8"	—
h(K)	#5	11'-9"	—
p(E)	#7	44'-1"	—
p3(E)	#5	18'-5"	—
p4(E)	#5	22'-9"	—
s(E)	#4	11'-5"	□
s(K)	#5	5'-2"	□
u(E)	#6	9'-6"	□
v1(E)	#5	4'-4"	—
v2(E)	#5	10'-0"	—
v3(E)	#5	6'-9"	—
v4(E)	#5	10'-8"	—
v5(E)	#5	7'-5"	—

CONCRETE STRUCTURES	Cu. Yd.	34.6
REINFORCEMENT BARS EPOXY COATED	Pound	3460
FURNISHING METAL SHELL PILES 14" X 0.250"	Foot	930
TEST PILE METAL SHELLS	Each	1
DRIVING PILES	Foot	930
STRUCTURE EXCAVATION	Cu. Yd.	155



PLAN

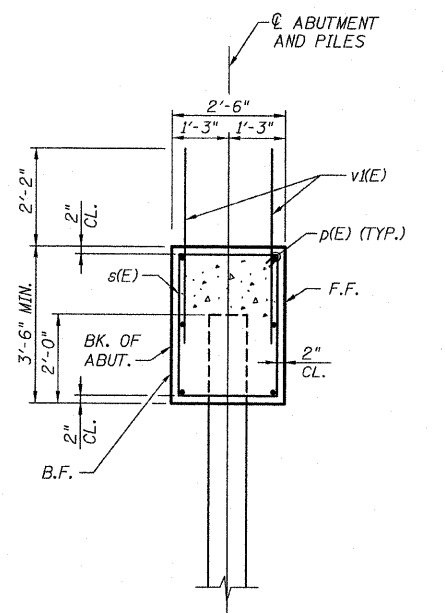


CUTTING DIAGRAM BARS v2(E) & v4(E)

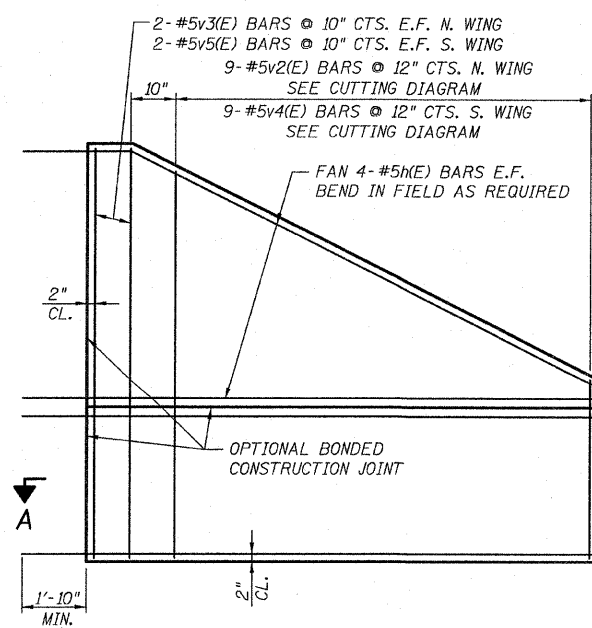
ORDER v2(E) AND v4(E) BARS FULL LENGTH.
CUT BARS AS SHOWN. USE REMAINDER IN OPPOSITE FACE.

NOTES:

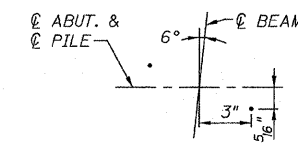
- POUR STEPS MONOLITHICALLY WITH CAP.
- ALL EDGES SHALL HAVE STANDARD 3/4" CHAMFER.
- PLACE v1(E) BARS TO CLEAR FLANGE OF BEAM.
- SPACE REINFORCEMENT IN CAP TO MISS ANCHOR BOLTS.
- E.F. DENOTES EACH FACE.
- F.F. DENOTES FRONT FACE.
- B.F. DENOTES BACK FACE.
- REINFORCEMENT BARS DESIGNATED (E) SHALL BE EPOXY COATED.
- BAR LAPS - #7 BAR - 4'-10".
- BARS INDICATED THUS 26x2 DENOTES 26 LINES OF BARS WITH 2 LENGTHS PER LINE.
- FOR METAL SHELL PILE DETAILS AND REINFORCEMENT, SEE SHEET 15 OF 20.



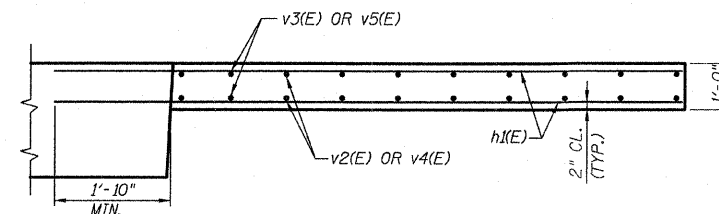
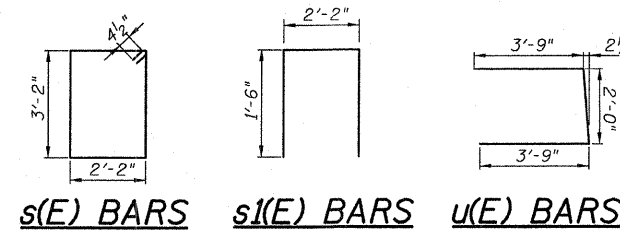
SECTION THRU ABUTMENT



WINGWALL ELEVATION
(TYPICAL EACH WING)



ANCHOR BOLT LAYOUT ④
(TYP. ALL BEAMS)



SECTION A-A

EAST ABUTMENT DETAILS
F.A.P. 592 (IL Rte. 157) OVER
UNION PACIFIC RAILROAD
SECTION 121-1R, 121HVB
ST. CLAIR COUNTY
STATION 5029+64.85
STRUCTURE NO. 082-0303