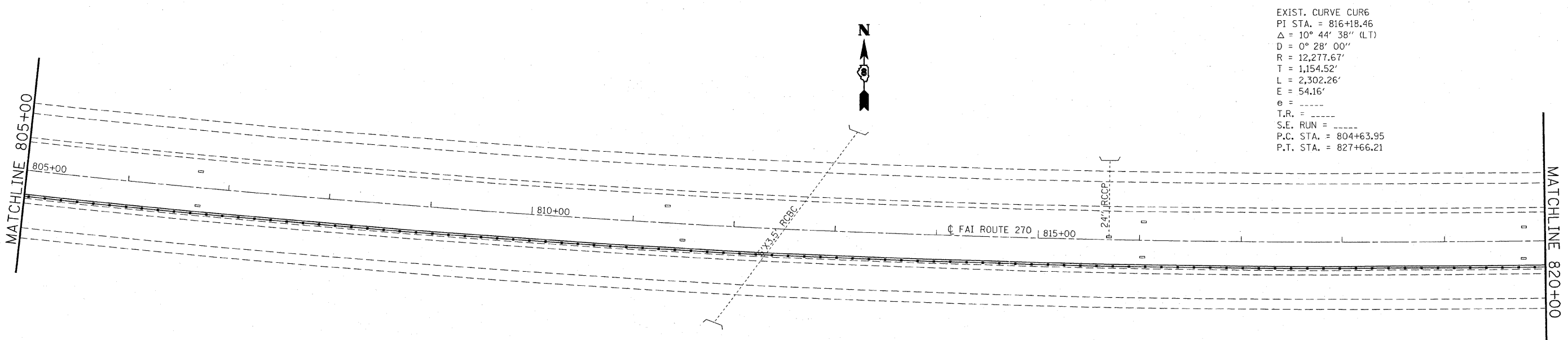
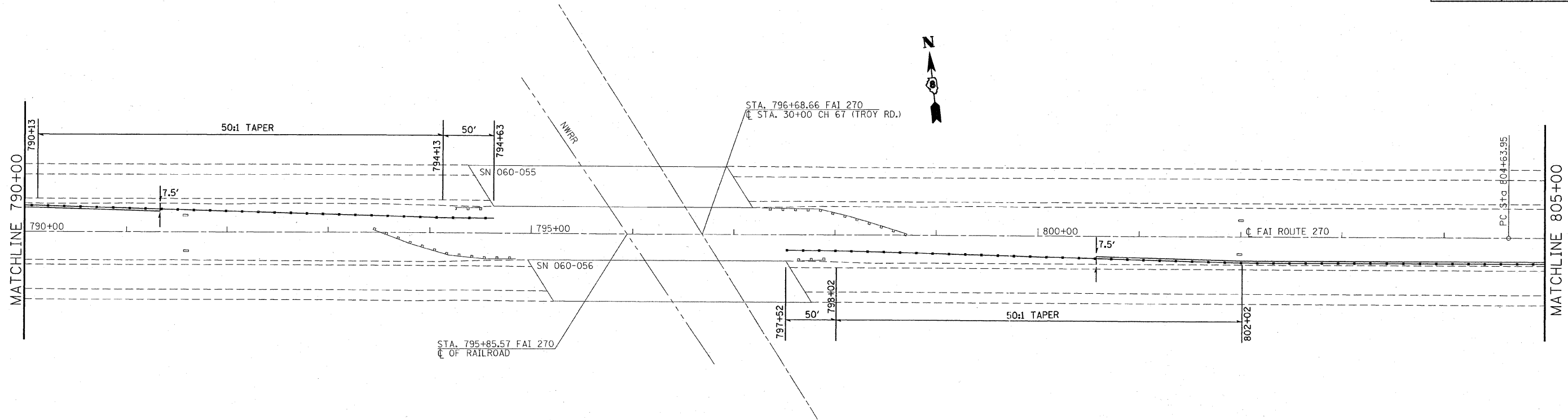


F.A.I. RTE.	SECTION	COUNTY	TOTAL SHEETS	SHEET NO.
270	60-(1,2,3,4,5)I	MADISON	46	25
STA. 790+00		TO STA. 820+00		
FED. ROAD DIST. NO. ILLINOIS		FED. AID PROJECT		



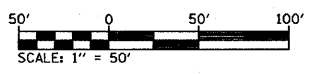
EXIST. CURVE CUR6
 PI STA. = 816+18.46
 $\Delta = 10^\circ 44' 38''$ (LT)
 $D = 0^\circ 28' 00''$
 $R = 12,277.67'$
 $T = 1,154.52'$
 $L = 2,302.26'$
 $E = 54.16'$
 $e = \text{-----}$
 $T.R. = \text{-----}$
 $S.E. \text{ RUN} = \text{-----}$
 $P.C. \text{ STA.} = 804+63.95$
 $P.T. \text{ STA.} = 827+66.21$

REVISIONS	
NAME	DATE

ILLINOIS DEPARTMENT OF TRANSPORTATION
PLAN VIEW
AREA #3
 FAI RTE 270
 SECTION 60-(1,2,3,4,5)I
 MADISON COUNTY

SCALE: VERT.
 HORIZ.
 DATE

DRAWN BY
 CHECKED BY



PLOT DATE = 12/12/2007
 FILE NAME = G:\projects\76b17\plan\p1n02527b.dgn
 PLOT SCALE = 1/4" = 100'
 REFERENCE = AREA #3