

F.A.P. RTE.	SECTION	COUNTY	TOTAL SHEETS	SHEET NO.
782	115BR-1 & 115BR-2	HARDIN	83	1
FED. ROAD DIST. NO. 9		ILLINOIS	CONTRACT NO. 78026	

INDEX OF SHEETS

SHEET NO.	DESCRIPTION
1.	COVER SHEET
2.	GENERAL NOTES AND STANDARDS
3.	SUMMARY OF QUANTITIES
4.	TYPICAL SECTIONS
5.-6.	SCHEDULES OF QUANTITIES (SECTION 115BR-1)
7.-8.	SCHEDULES OF QUANTITIES (SECTION 115BR-2)
9.	PLAN AND PROFILE (SECTION 115BR-1)
10.	STAGE I CONSTRUCTION (SECTION 115BR-1)
11.	STAGE II CONSTRUCTION (SECTION 115BR-1)
12.	EROSION CONTROL PLAN (SECTION 115BR-1)
13.	PAVEMENT MARKINGS (SECTION 115BR-1)
14.	PLAN AND PROFILE (SECTION 115BR-2)
15.	STAGE I CONSTRUCTION (SECTION 115BR-2)
16.	STAGE II CONSTRUCTION (SECTION 115BR-2)
17.	EROSION CONTROL PLAN (SECTION 115BR-2)
18.	PAVEMENT MARKINGS (SECTION 115BR-2)
19.	WIDE LOAD DETOUR
20.-35.	STRUCTURE PLANS (SECTION 115BR-1)
36.-46.	EXISTING STRUCTURE PLANS (SECTION 115BR-1)
47.-61.	STRUCTURE PLANS (SECTION 115BR-2)
62.-71.	EXISTING STRUCTURE PLANS (SECTION 115BR-2)
72.-78.	STATION CROSS SECTIONS (SECTION 115BR-1)
79.-83.	STATION CROSS SECTIONS (SECTION 115BR-2)

STATE OF ILLINOIS
DEPARTMENT OF TRANSPORTATION
DIVISION OF HIGHWAYS
PROPOSED
HIGHWAY PLANS

F.A.P. ROUTE 782 (IL. ROUTE 1)
SECTION 115BR-1 & 115BR-2
PROJECT: BHF-0782 (010)
HARDIN COUNTY
C-99-006-08

PCC DECK BEAM SUPERSTRUCTURE REPLACEMENT
OVER HARRIS CREEK (SECTION 115BR-1) SN035-0001
PCC DECK BEAM SUPERSTRUCTURE REPLACEMENT
OVER BRANCH OF ROCK CREEK (SECTION 115BR-2) SN035-0003

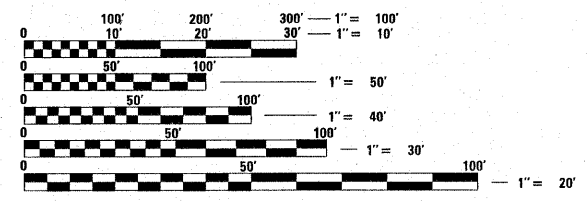


SEC. 115BR-1 & SEC. 115BR-2	
FUNCTIONAL CLASSIFICATION:	MINOR ARTERIAL (NON URBAN)
DESIGN SPEED:	55 MPH
POSTED SPEED:	55 MPH
ADT:	1500 (2005)
PV:	72%
TRUCKS:	28%

UTILITIES

SHAWNEE TELEPHONE COMPANY
ATTN: JOHN BOURLAND
P.O. BOX 97
EQUALITY, ILLINOIS 62934
(618) 276-4211

SOUTHEASTERN ILLINOIS ELECTRIC COOP
ATTN: ERIC JUNG
585 HIGHWAY 142 S.
ELDORADO, ILLINOIS 62930
(618) 273-2611



FULL SIZE PLANS HAVE BEEN PREPARED USING STANDARD ENGINEERING SCALES. REDUCED SIZED PLANS WILL NOT CONFORM TO STANDARD SCALES. IN MAKING MEASUREMENTS ON REDUCED PLANS, THE ABOVE SCALES MAY BE USED.

J.U.L.I.E.
JOINT UTILITY LOCATION INFORMATION FOR EXCAVATION
1-800-891-0123
OR 811

PROJECT ENGINEER
PROJECT MANAGER

CONTRACT NO. 78026



IMPROVEMENT BEGINS
STATION 926+88.67

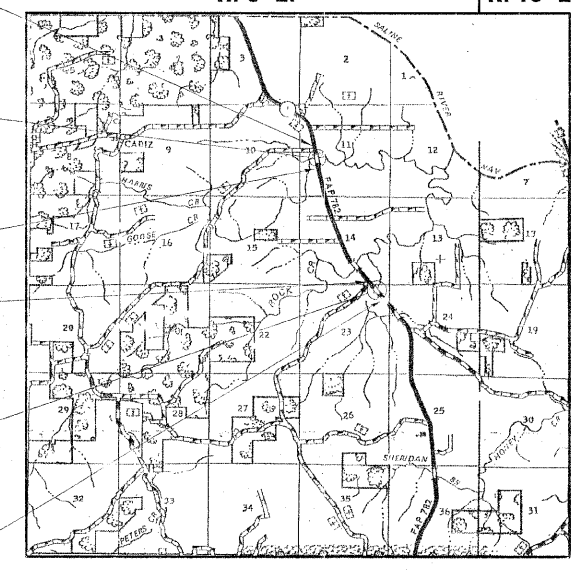
STA. 927+65 - SPECIAL BRIDGE DESIGN
PRECAST PRESTRESSED CONCRETE DECK
BEAM SUPERSTRUCTURE REPLACEMENT.
TWO SPANS: 39'-4 1/2", 39'-4 1/2"
33'-0" RDWY.; SKEW = 16°30'
STRUCTURE NO. 035-0001

IMPROVEMENT ENDS
STATION 928+41.33

IMPROVEMENT BEGINS
STATION 1015+10.22

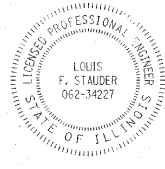
STA. 1015+71.72 - SPECIAL BRIDGE DESIGN
PRECAST PRESTRESSED CONCRETE DECK
BEAM SUPERSTRUCTURE REPLACEMENT.
SINGLE SPAN @ 48'-1 1/2"
33'-0" RDWY.; SKEW = 27°
STRUCTURE NO. 035-0003

IMPROVEMENT ENDS
STATION 1017+33.22



LOCATION MAP
APPROXIMATE SCALE: 0 1 MILE

GROSS AND NET LENGTH OF SECTION 115BR-1	=	152.66 FT.	=	0.029 MI.
NET ROADWAY LENGTH	=	152.66 FT.	=	0.029 MI.
BRIDGE LENGTH SN 035-0001	=	80.66 FT.	=	0.015 MI.
GROSS AND NET LENGTH OF SECTION 115BR-2	=	223.00 FT.	=	0.042 MI.
NET ROADWAY LENGTH	=	223.00 FT.	=	0.042 MI.
BRIDGE LENGTH SN 035-0003	=	51.00 FT.	=	0.01 MI.



Louis F. Stauffer 11/8/2008
ILLINOIS PROFESSIONAL LICENSE NO. 34227
(EXPIRATION DATE: 11/30/09)

DESIGN DESIGNATION
N.A.

STATE OF ILLINOIS
DEPARTMENT OF TRANSPORTATION
DIVISION OF HIGHWAYS

SUBMITTED Jan 28, 20 08
Max C. Lamer
DEPUTY DIRECTOR OF HIGHWAYS, REGION ENGINEER

March 21, 20 08
Eric E. Harau
ENGINEER OF DESIGN AND ENVIRONMENT

March 21, 20 08
Christine M. Reed
DIRECTOR OF HIGHWAYS, CHIEF ENGINEER

PRINTED BY THE AUTHORITY
OF THE STATE OF ILLINOIS

PROJECT ENGINEER: DAVID PICHE (618) 351-5227