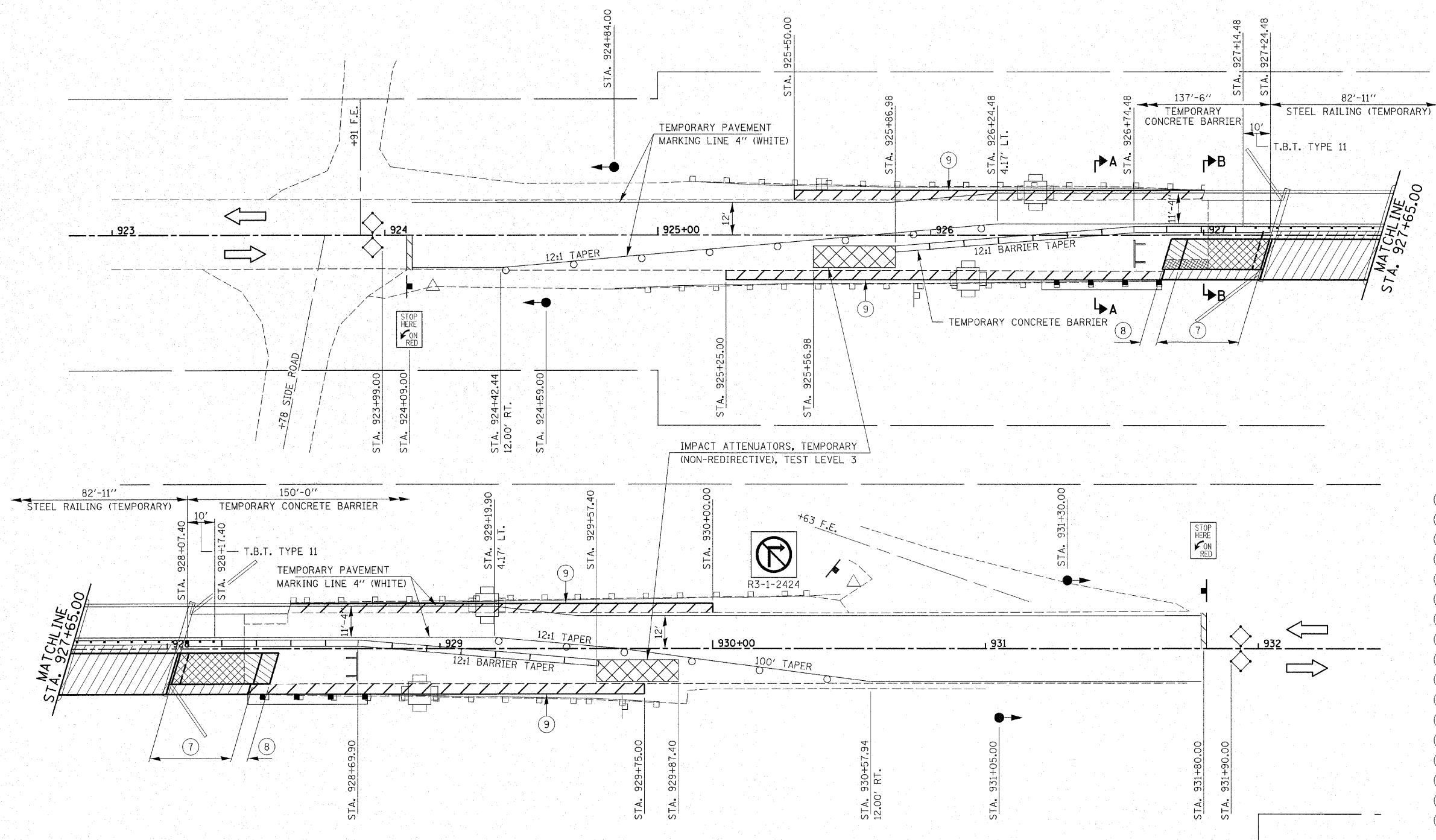
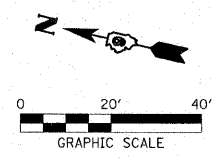


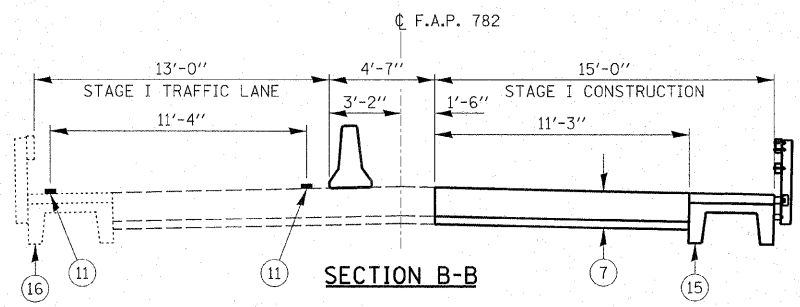
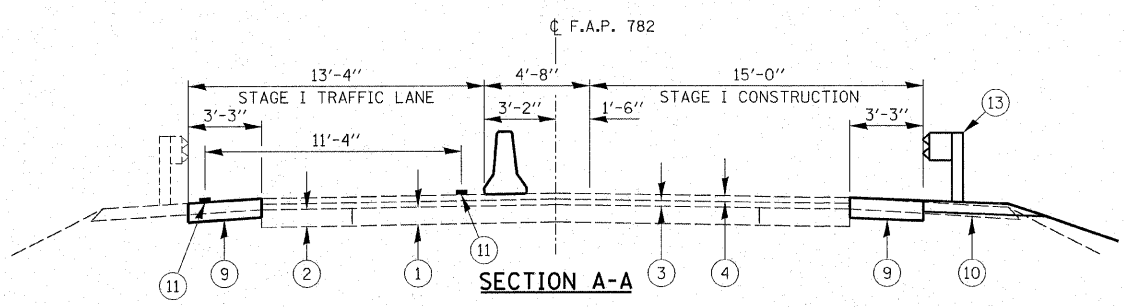
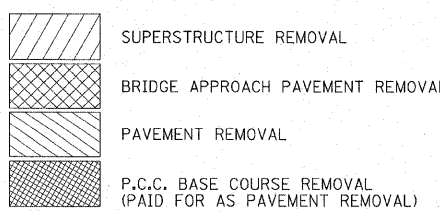
ROUTE NO.	SECTION	COUNTY	TOTAL SHEETS	SHEET NO.
F.A.P. 782	115BR-1	HARDIN	83	10
FED. ROAD DIST. NO.	ILLINOIS	CONTRACT NO. 78026		



- GENERAL NOTES**
- TRAFFIC CONTROL SHALL BE ERRECTED AS SHOWN AND ACCORDING TO "TRAFFIC CONTROL AND PROTECTION, STANDARD 701321."
 - SEE SPECIAL PROVISIONS FOR ADDITIONAL TRAFFIC CONTROL REQUIREMENTS.
 - COORDINATE LOCATION OF SIGNALS WITH FINAL WORK AS DIRECTED BY THE ENGINEER
 - CONSTRUCT TEMPORARY RUMBLE STRIPS AT LOCATIONS SHOWN ON STANDARD 701321.
 - STEEL RAILING (TEMPORARY) AND TEMPORARY CONCRETE BARRIER SHALL BE CONNECTED ACCORDING TO "TRAFFIC BARRIER TERMINAL TYPE 11, STANDARD 631051."
 - EXISTING TEMPORARY TRAFFIC SYSTEM SHALL BE REMOVED AND PAID FOR AS REMOVE EXISTING TEMPORARY TRAFFIC SIGNAL EQUIPMENT EACH.



- LEGEND**
- EXIST CONCRETE PAVEMENT
 - EXISTING BASE COURSE WIDENING 9"
 - EXISTING H.M.A. BINDER COURSE 1.5" MIN.
 - EXISTING H.M.A. SURFACE COURSE 1.5"
 - EXISTING AGGREGATE SHOULDERS TYPE A, 6"
 - EXISTING PCC BASE COURSE, 10"
 - BRIDGE APPROACH PAVEMENT
 - BRIDGE APPROACH PAVEMENT CONNECTOR (PCC)
 - H.M.A. BASE COURSE WIDENING 11"
 - AGGREGATE SHOULDERS TYPE A 6"
 - TEMPORARY PAVEMENT MARKINGS
 - EXISTING BRIDGE APPROACH PAVEMENT
 - TRAFFIC BARRIER TERMINAL, TYPE 6A
 - EXISTING GUARDRAIL
 - PROPOSED PRECAST SLAB WITH CONCRETE WEARING SURFACE
 - EXISTING PRECAST SLAB WITH CONCRETE WEARING SURFACE
 - SUB-BASE GRANULAR MATERIAL TYPE A 4" (COST INCLUDED WITH BRIDGE APPROACH PAVEMENT)



HAMPTON, LENZINI & RENWICK, INC.
 CIVIL & STRUCTURAL ENGINEERS
 LAND SURVEYORS
 3085 STEVENSON DRIVE, SUITE 201
 SPRINGFIELD, ILLINOIS 62703
 (217) 546-3400

ELGIN • SPRINGFIELD

PROJECT NUMBER: 12-98-0016-1 DATE: 01/18/08
 DESIGNED: L.F.S. CHECKED: S.W.M. DRAWN: D.T.M.

STAGE I CONSTRUCTION
 IL. ROUTE 1 OVER HARRIS CREEK
 F.A.P. ROUTE 782 / SECTION 115BR-1
 HARDIN COUNTY
 STATION 927+65
 STRUCTURE NO. 035-0001