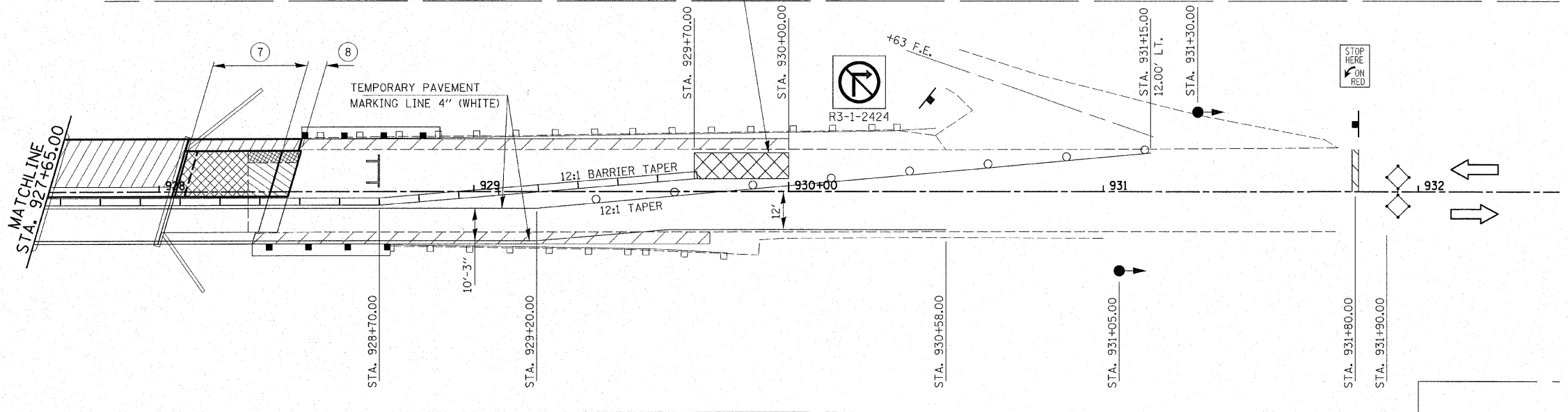
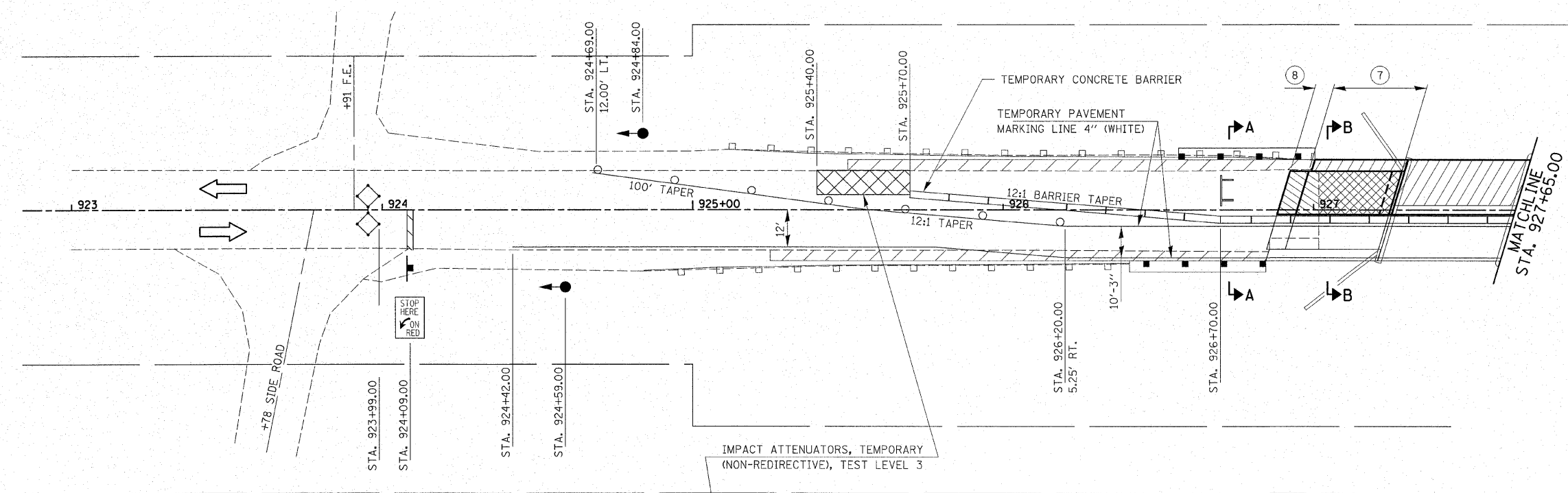
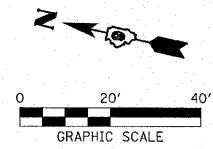


ROUTE NO.	SECTION	COUNTY	TOTAL SHEETS	SHEET NO.
F.A.P. 782	115BR-1	HARDIN	83	11
FED. ROAD DIST. NO.		ILLINOIS	CONTRACT NO. 78026	

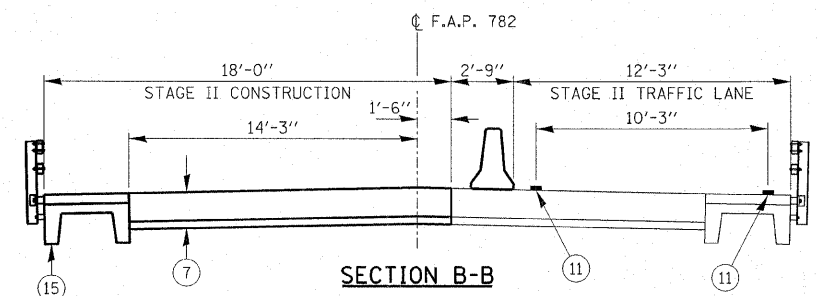
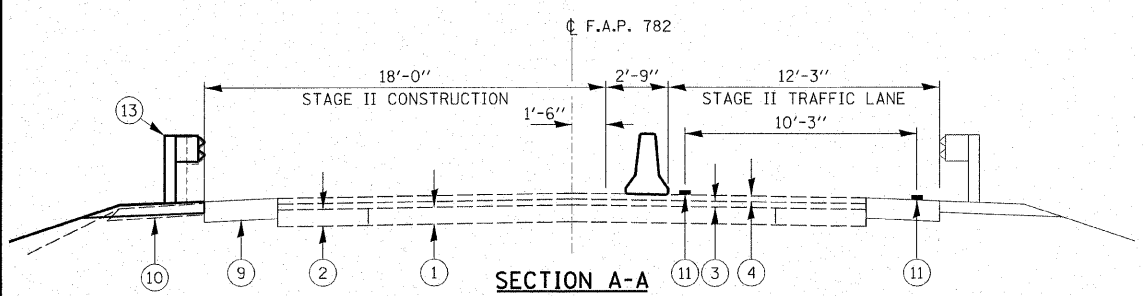
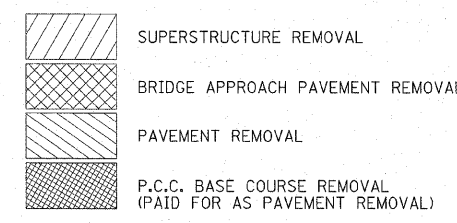
GENERAL NOTES

1. TRAFFIC CONTROL SHALL BE ERECTED AS SHOWN AND ACCORDING TO "TRAFFIC CONTROL AND PROTECTION, STANDARD 701321."
2. SEE SPECIAL PROVISIONS FOR ADDITIONAL TRAFFIC CONTROL REQUIREMENTS.
3. COORDINATE LOCATION OF SIGNALS WITH FINAL WORK AS DIRECTED BY THE ENGINEER
4. CONSTRUCT TEMPORARY RUMBLE STRIPS AT LOCATIONS SHOWN ON STANDARD 701321.
5. STEEL RAILING (TEMPORARY) AND TEMPORARY CONCRETE BARRIER SHALL BE CONNECTED ACCORDING TO "TRAFFIC BARRIER TERMINAL TYPE 11, STANDARD 631051."



LEGEND

- 1 EXIST CONCRETE PAVEMENT
- 2 EXISTING BASE COURSE WIDENING 9"
- 3 EXISTING H.M.A. BINDER COURSE 1.5" MIN.
- 4 EXISTING H.M.A. SURFACE COURSE 1.5"
- 5 EXISTING AGGREGATE SHOULDERS TYPE A, 6"
- 6 EXISTING PCC BASE COURSE, 10"
- 7 BRIDGE APPROACH PAVEMENT
- 8 BRIDGE APPROACH PAVEMENT CONNECTOR (PCC)
- 9 H.M.A. BASE COURSE WIDENING 11"
- 10 AGGREGATE SHOULDERS TYPE A 6"
- 11 TEMPORARY PAVEMENT MARKINGS
- 12 EXISTING BRIDGE APPROACH PAVEMENT
- 13 TRAFFIC BARRIER TERMINAL, TYPE 6A
- 14 EXISTING GUARDRAIL
- 15 PROPOSED PRECAST SLAB WITH CONCRETE WEARING SURFACE
- 16 EXISTING PRECAST SLAB WITH CONCRETE WEARING SURFACE
- 17 SUB-BASE GRANULAR MATERIAL TYPE A 4" (COST INCLUDED WITH BRIDGE APPROACH PAVEMENT)



HAMPTON, LENZINI & RENWICK, INC.
 CIVIL & STRUCTURAL ENGINEERS
 LAND SURVEYORS
 3085 STEVENSON DRIVE, SUITE 201
 SPRINGFIELD, ILLINOIS 62703
 (217) 546-3400

ELGIN • SPRINGFIELD

PROJECT NUMBER: 12-98-0016-1 DATE: 01/18/08
 DESIGNED: L.F.S. CHECKED: S.W.M. DRAWN: D.T.M.

STAGE II CONSTRUCTION
 IL. ROUTE 1 OVER HARRIS CREEK
 F.A.P. ROUTE 782 / SECTION 115BR-1
 HARDIN COUNTY
 STATION 927+65
 STRUCTURE NO. 035-0001