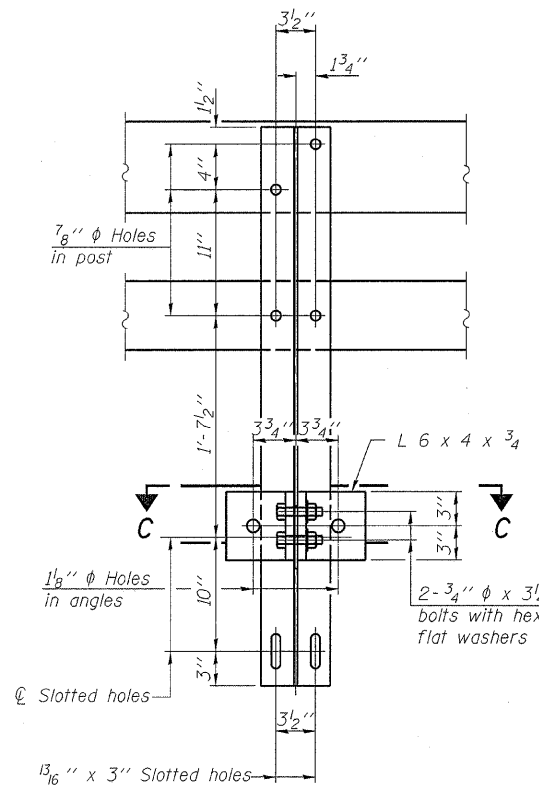
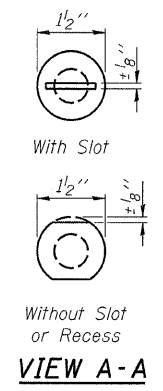
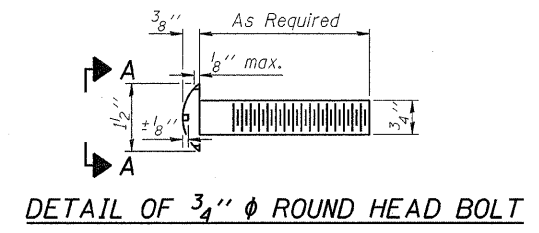


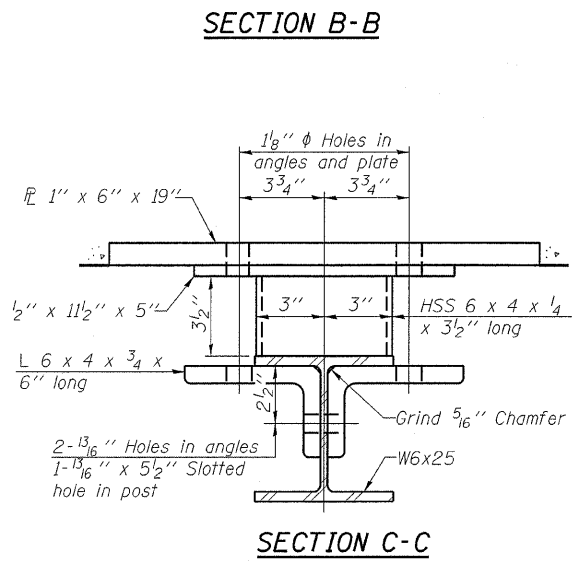
STATE OF ILLINOIS  
DEPARTMENT OF TRANSPORTATION

ROUTE NO.	SECTION	COUNTY	PERCENT COMPLETE	SHEET NO.	SHEET NO. 11
F.A.P. 782	115BR-1	Hardin	83	30	16 SHEETS
FED. ROAD DIST. NO. 7	ILLINOIS	FED. AID PROJECT			

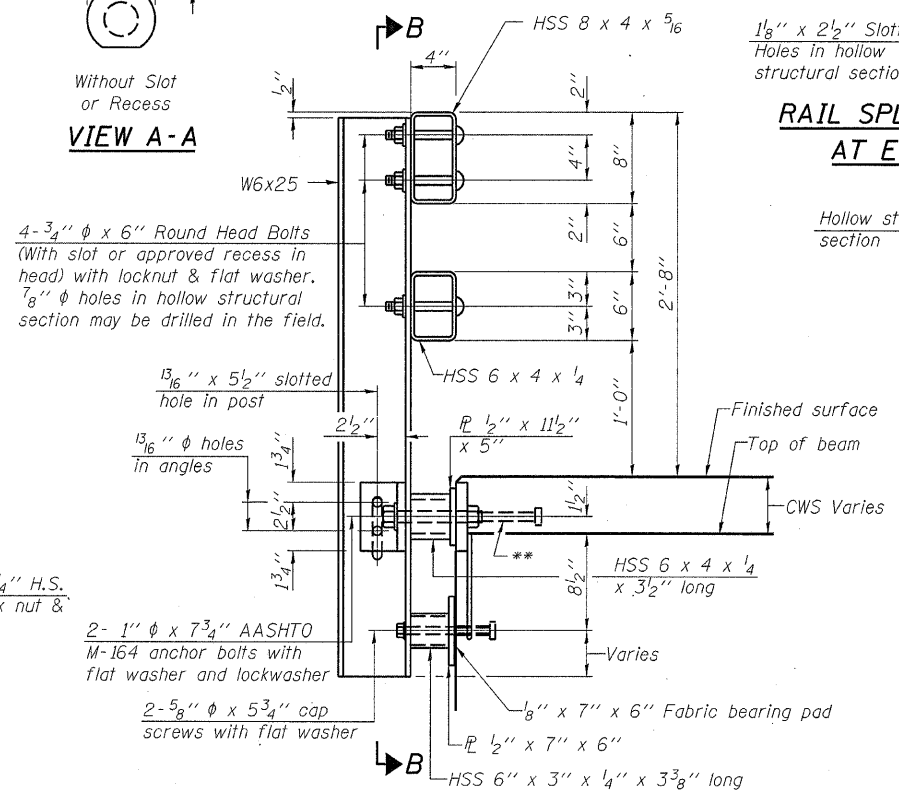
Contract #78026



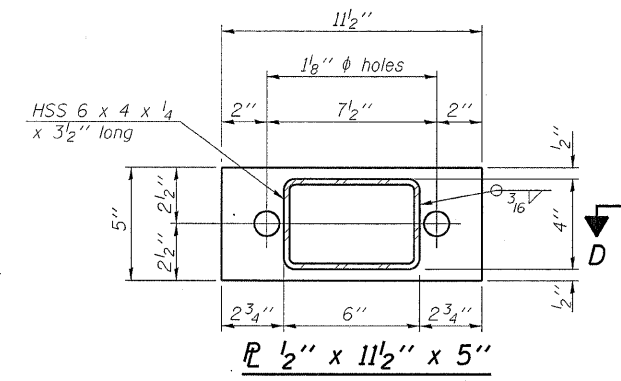
SECTION B-B



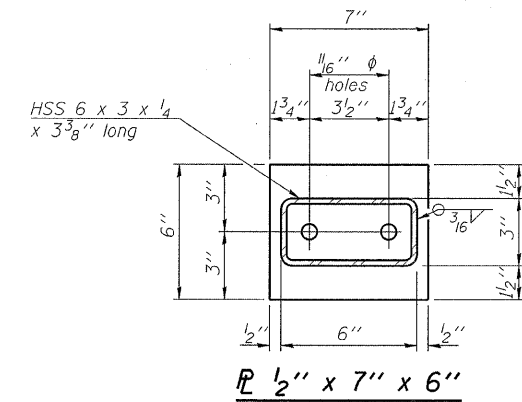
SECTION C-C



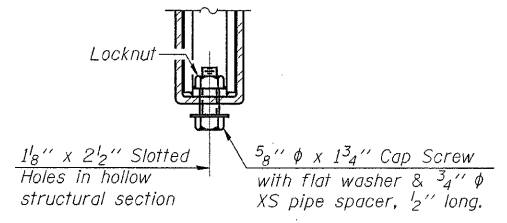
SECTION AT RAIL POST



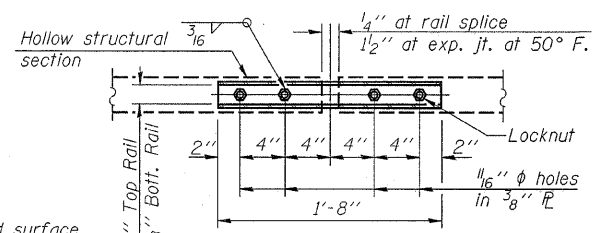
1/2" x 11 1/2" x 5"



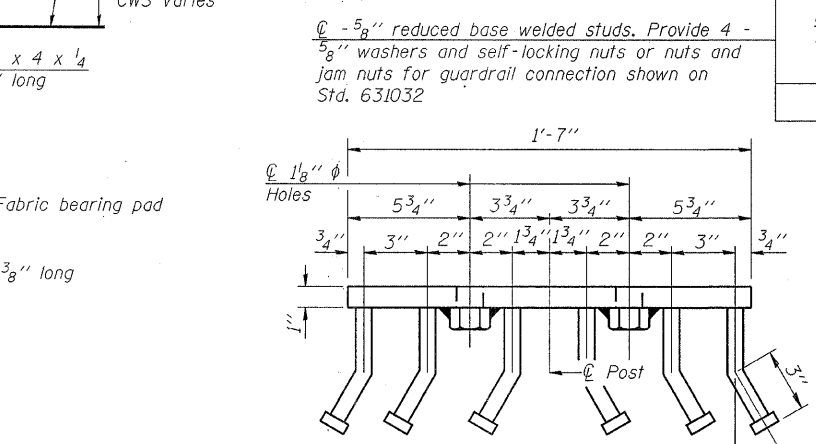
1/2" x 7" x 6"



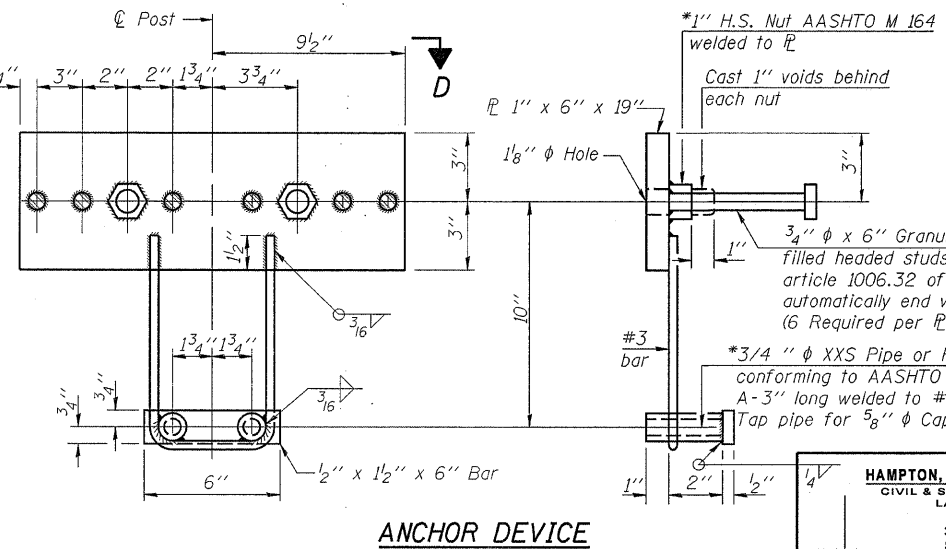
RAIL SPLICE CONNECTION  
AT EXPANSION JT.



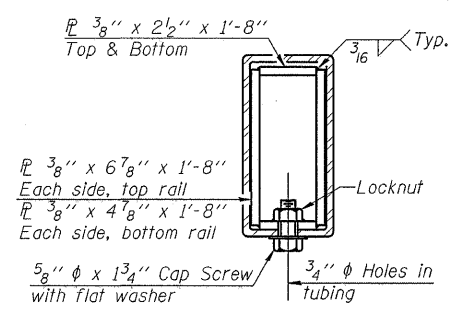
PLAN-BOTT. SPLICE R  
TYPICAL



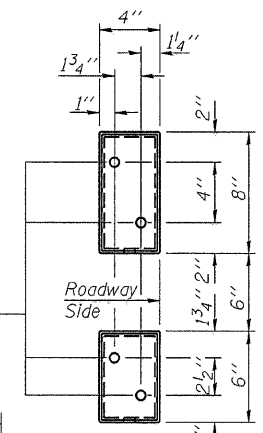
VIEW D-D



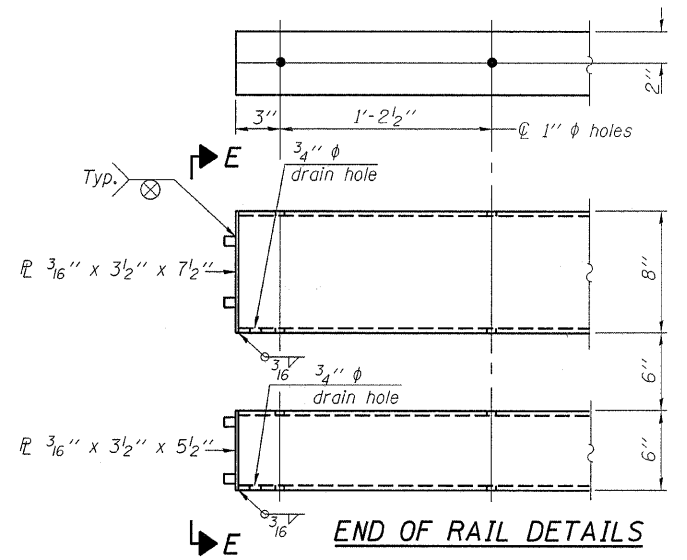
ANCHOR DEVICE



SECTION AT  
RAIL SPLICE



VIEW E-E



END OF RAIL DETAILS

Notes:  
All field drilled holes shall be coated with an approved zinc rich paint before erection.  
For multi-span bridges, sufficient 1/4" x 6" x 1'-2" galvanized steel shims shall be provided to align rail between adjacent spans. Cost included with Steel Railing, Type SM.  
Steel rail elements shall be galvanized according to Article 509.05 of the Standard Specifications.  
\*\*The studs of the anchor devices shall be placed below the top reinforcement bars and the outermost longitudinal reinforcement bar shall be placed directly above the studs of the rail post anchor device.

BILL OF MATERIAL

Item	Unit	Quantity
Steel Railing, Type SM	Foot	291

R-34CWS

9-3-07 (6'-3" Maximum Post Spacing) (5" minimum to 7 1/8" maximum CWS thickness)

\*Threaded areas shall be plugged or blocked off during casting of beam. Galvanized after fabrication.

**HAMPTON, LENZINI & RENWICK, INC.**  
CIVIL & STRUCTURAL ENGINEERS  
LAND SURVEYORS  
3085 STEVENSON DRIVE, SUITE 201  
SPRINGFIELD, ILLINOIS 62703  
(217) 546-3400

**ELGIN • SPRINGFIELD**

PROJECT NUMBER: 12-98-0016-1 DATE: 01/18/08  
DESIGNED: M.D.C. CHECKED: S.M.S. DRAWN: D.T.M.

**STEEL RAILING, TYPE SM  
WITH CONCRETE WEARING SURFACE**  
IL. ROUTE 1 OVER HARRIS CREEK  
F.A.P. ROUTE 782 / SECTION 115BR-1  
HARDIN COUNTY  
STATION 927+65  
STRUCTURE NO. 035-0001