



STATE OF ILLINOIS
DEPARTMENT OF TRANSPORTATION

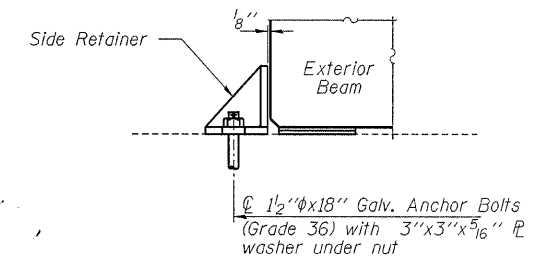
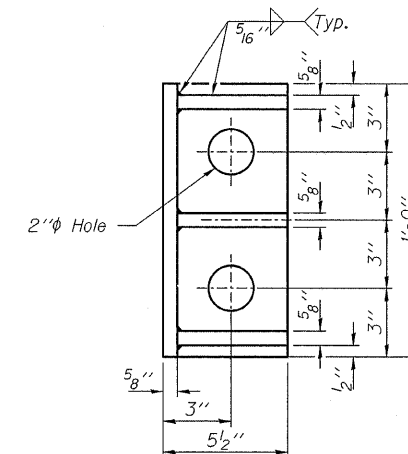
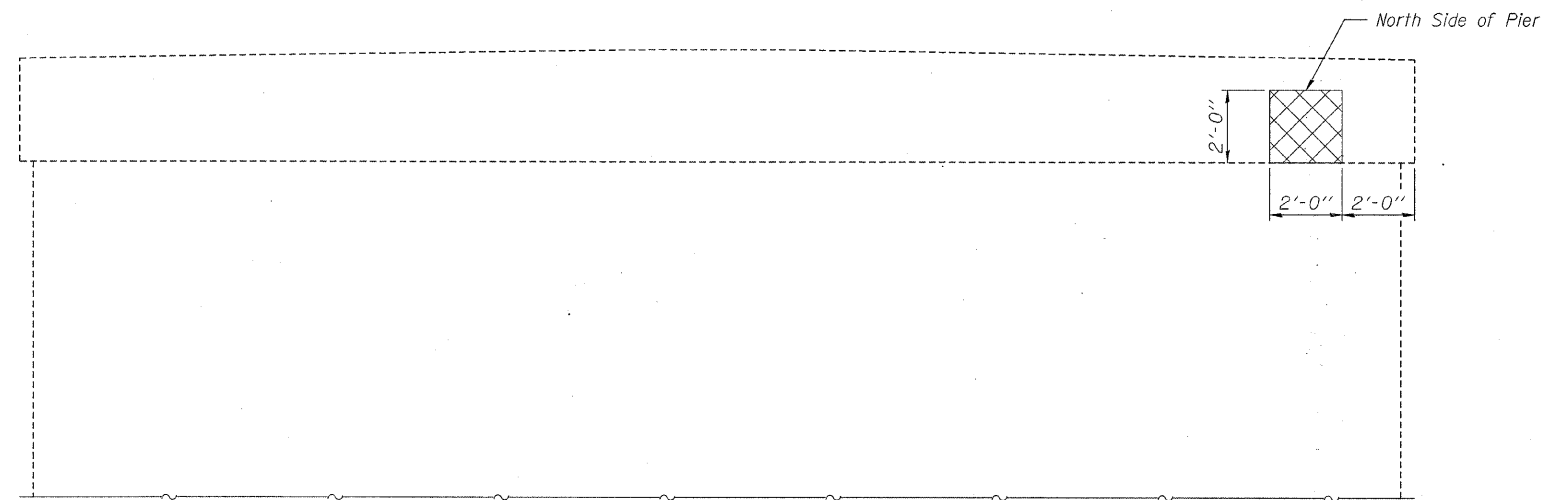
ROUTE NO. 782	SECTION 115BR-1	COUNTY Hardin	TOTAL SHEETS 83	SHEET NO. 34	SHEET NO. 15 16 SHEETS
F.A.P. 782		ILLINOIS		FED. AID PROJECT-	
Contract #78026					

NOTES

See Sheet 8 of 16 for Sections Thru Pier views and additional details.
The existing pier bearing seat is to be inspected by the Engineer after deck beam removal. Deteriorated concrete areas shall be repaired if deemed necessary using Structural Repair of Concrete (Depth equal to or less than 5"). Concrete Sealer shall be applied to Concrete Repair areas. Cost included in Concrete Repair item.
Pier Structural Repair of Concrete areas and Crack Repair lengths are estimated from a 10/24/2007 inspection.

REPAIR LEGEND:

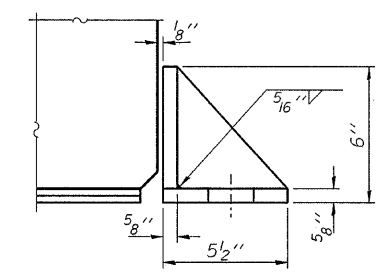
-  Requires Structural Repair of Concrete (Depth Equal to or less than 5")
-  Requires Epoxy Crack Injection



EXTERIOR BEAM RETAINER DETAILS
(4 Required)

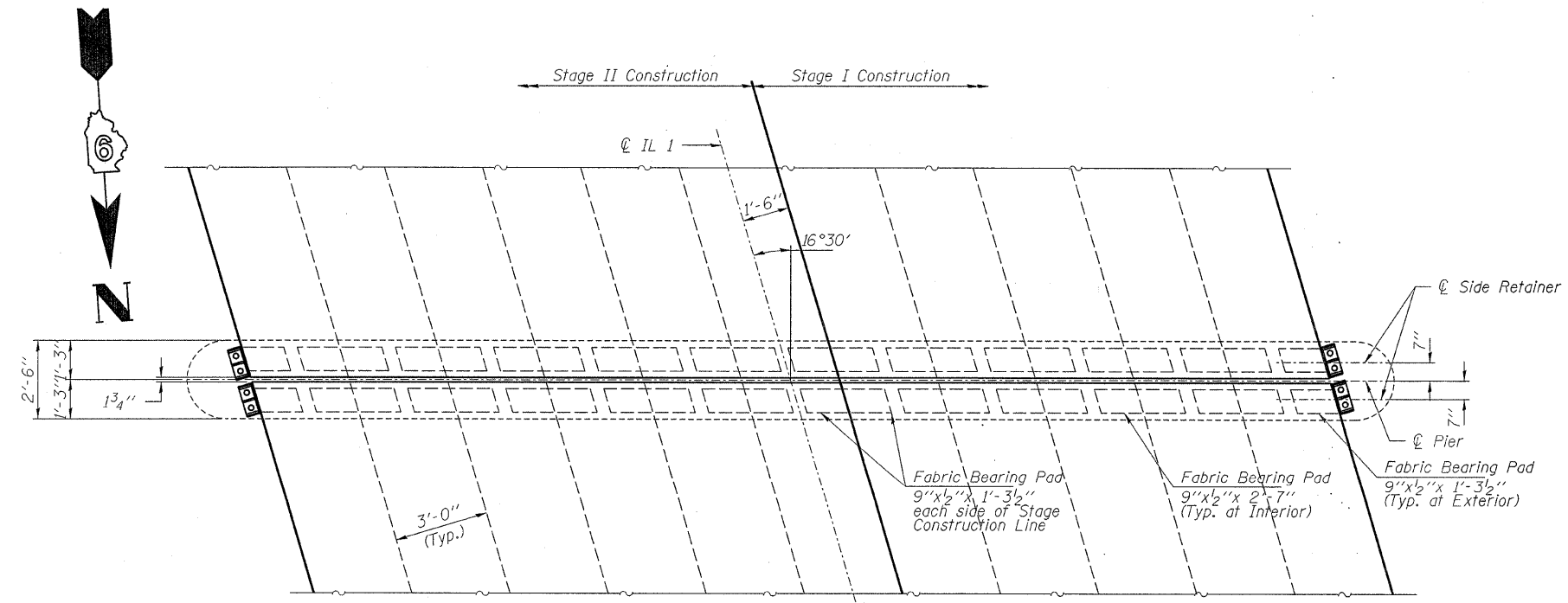
Cost of Side Retainer, Anchor Bolts & accessories are included with Precast Prestressed Concrete Deck Beams.
The side retainer shall be galvanized after shop fabrication according to AASHTO M111.
Anchor bolts shall be ASTM F1554 all-thread (or an Engineer-approved alternate material) of the grade(s) and diameter(s) specified. ASTM A307 Grade C anchor bolts may be used in lieu of ASTM F1554 Grade 36 (Fy=36 ksi).

Anchor bolts for side retainers may be installed in holes drilled after members are in place.
Fill 1/8" gap with shim PL to provide temporary lateral support until shear keys have been grouted and concrete wearing surface as been placed.



BILL OF MATERIAL - PIER

Structural Repair of Concrete (Depth equal to or less than 5")	Sq. Ft.	4
--	---------	---



ELEVATION

HAMPTON, LENZINI & RENWICK, INC.
CIVIL & STRUCTURAL ENGINEERS
LAND SURVEYORS

HLR

3085 STEVENSON DRIVE, SUITE 201
SPRINGFIELD, ILLINOIS 62703
(217) 546-3400

ELGIN • SPRINGFIELD

PROJECT NUMBER: 12-98-0016-1 DATE: 01/18/08
DESIGNED: M.D.C. CHECKED: S.M.S. DRAWN: D.T.M.

PIER

IL. ROUTE 1 OVER HARRIS CREEK
F.A.P. ROUTE 782 / SECTION 115BR-1
HARDIN COUNTY
STATION 927+65
STRUCTURE NO. 035-0001