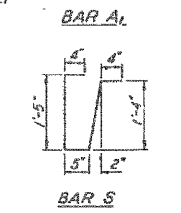


BAR LIST - ONE UNIT
Reinforcement to be cast into slab

Bar	No	Size	Length (feet)
A	37	#4	3'-3"
A1	49	#4	4'-0"
B	20	#4	18'-4"
B1	4	#4	3'-6"
B2	4	#4	3'-7"
G	8	#11	35'1"
S	138	#3	3'-10"

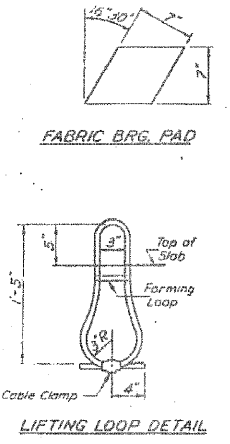
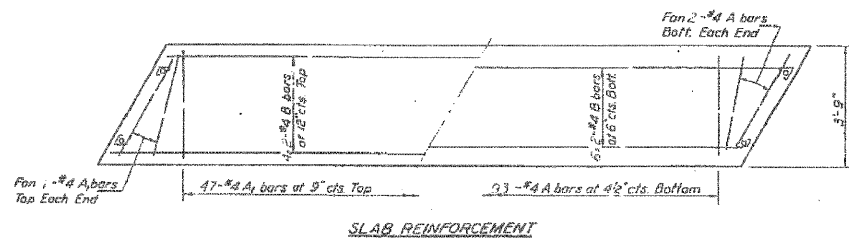


NOTES

Unless otherwise approved by the Engineer, lifting loops shall be #6, 6x19 class wire raps with fiber core and shall have a minimum ultimate strength of 18,700 lbs. Loops shall be burned off after slab has been erected. Notes shall be drilled and anchor dowels grouted in place. Cost of reinforcement and accessories cast into the slab used, bearing pads, furnishing, drilling for, placing and grouting anchor dowels and #4 hooked bolts is included in Unit bill price for "Precast Concrete Bridge Slab." The Precast Concrete Bridge Slab shall be erected and aligned with the exterior face of the exterior Deck Beam after Deck Beams are in final position.

BILL OF MATERIAL

Item	Unit	Quantity
Precast Concrete Bridge Slab	Sq. Ft.	269
Class X Concrete	Cu Yds.	0.3



STRESSES
 $f'_c = 4,500 \text{ psi}$
 $f_c = 1,800 \text{ psi}$
 $f_s = 20,000 \text{ psi}$
 $n = 8$
 LOADING HS-20

NORTH WEST & SOUTH EAST
APPROACH DETAILS
 F.A. RT. 782 SEC. 115A-DR
 HARDIN COUNTY
 STATION 927+65

DESIGNED: [Signature]
 EXAMINED: [Signature]
 CHECKED: [Signature]
 DRAWN: J.L. Armstrong
 OCT 13 1971

HAMPTON, LENZINI & RENWICK, INC.
 CIVIL & STRUCTURAL ENGINEERS
 LAND SURVEYORS
 3086 STEVENSON DRIVE, SUITE 201
 SPRINGFIELD, ILLINOIS 62703
 (217) 546-3400
 ELGIN • SPRINGFIELD

EXISTING STRUCTURE PLANS
 IL. ROUTE 1 OVER HARRIS CREEK
 F.A.P. ROUTE 782 / SECTION 115BR-1
 HARDIN COUNTY
 STATION 927+65
 STRUCTURE NO. 035-0001

PROJECT NUMBER: 12-98-0016-1
 DESIGNED: M.D.C. CHECKED: S.M.S. DRAWN: D.T.M.
 DATE: 01/18/08