

STATE OF ILLINOIS  
DEPARTMENT OF TRANSPORTATION

ROUTE NO. F.A.P. 782	SECTION 115BR-1	COUNTY Hardin	DISTRICT 83	SHEET NO. 40
FED. ROAD DIST. NO. 7		ILLINOIS	FED. AID PROJECT-	

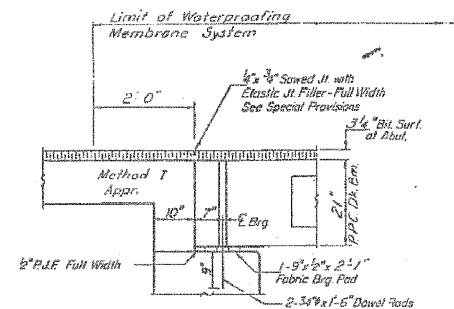
SHEET NO. 5  
11 SHEETS

Contract #78026

STATE OF ILLINOIS  
DEPARTMENT OF TRANSPORTATION

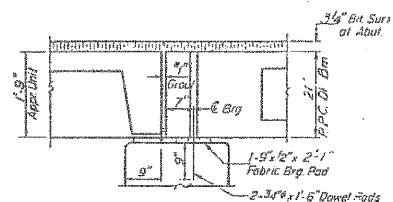
ROUTE NO. F.A.P. 782	SECTION 115A-DR	COUNTY HARDIN	DISTRICT 18	SHEET NO. 14
FED. ROAD DIST. NO. 7		ILLINOIS	FED. AID PROJECT-	

SHEET NO. 5  
9 SHEETS

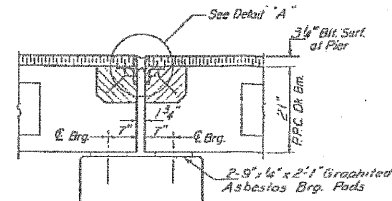


SECTION THRU ABUTS  
AT E. ROWY.

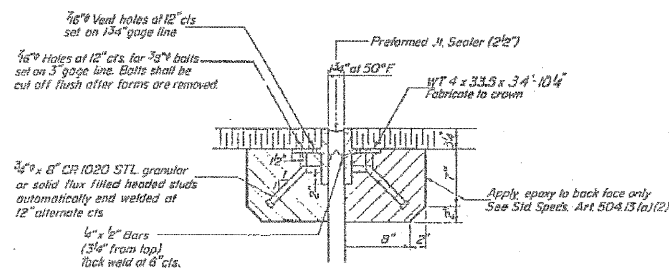
1" Joint shall be packed with a very dry mix of 2:1 sand and P.C. mortar. This dimension may vary plus or minus to accommodate tolerance in beam lengths.



SECTION THRU ABUTS  
AT OUTSIDE BEAM

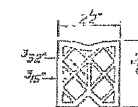


SECTION THRU PIER



DETAIL "A"

NOTE: Dimensions are at right angles.  
Hatched areas to be poured after beams have been erected and joints grouted.  
Ends of beams shall be aligned at the expansion joints. Any unequal variation in the beam lengths shall be placed at the fixed joint.  
See End of Beam Detail for reinforcement.



PREFORMED JOINT SEALER (2' x 7')

Designed Eugene Paul Summer	DESIGNED	19
Checked E. Summer	CHECKED	
Drawn R. P. Summer	DRAWN	
Checked E.A.S.	CHECKED	

DETAILS  
F.A. RT. 782 SEC. 115A-DR  
HARDIN COUNTY  
STATION 927+65

**HAMPTON, LENZINI & RENWICK, INC.**  
CIVIL & STRUCTURAL ENGINEERS  
LAND SURVEYORS

3085 STEVENSON DRIVE, SUITE 201  
SPRINGFIELD, ILLINOIS 62703  
(217) 546-3400

ELGIN • SPRINGFIELD

PROJECT NUMBER: 12-98-0016-1 DATE: 01/18/08  
DESIGNED: M.D.C. CHECKED: S.M.S. DRAWN: D.T.M.

EXISTING STRUCTURE PLANS  
IL. ROUTE 1 OVER HARRIS CREEK  
F.A.P. ROUTE 782 / SECTION 115BR-1  
HARDIN COUNTY  
STATION 927+65  
STRUCTURE NO. 035-0001