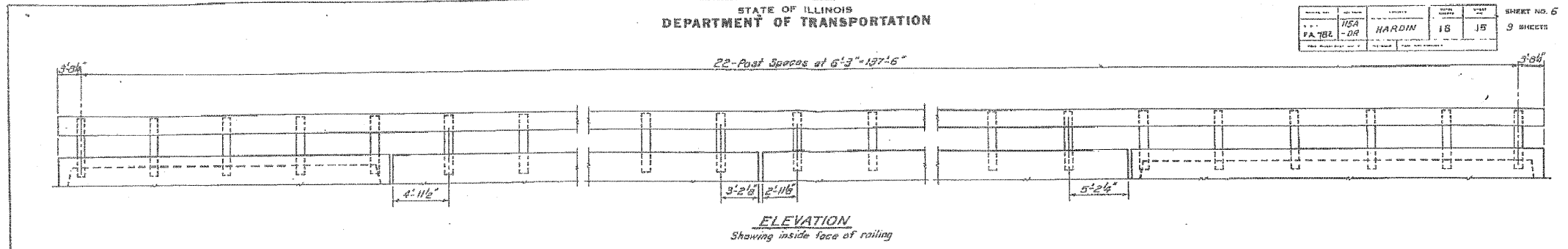


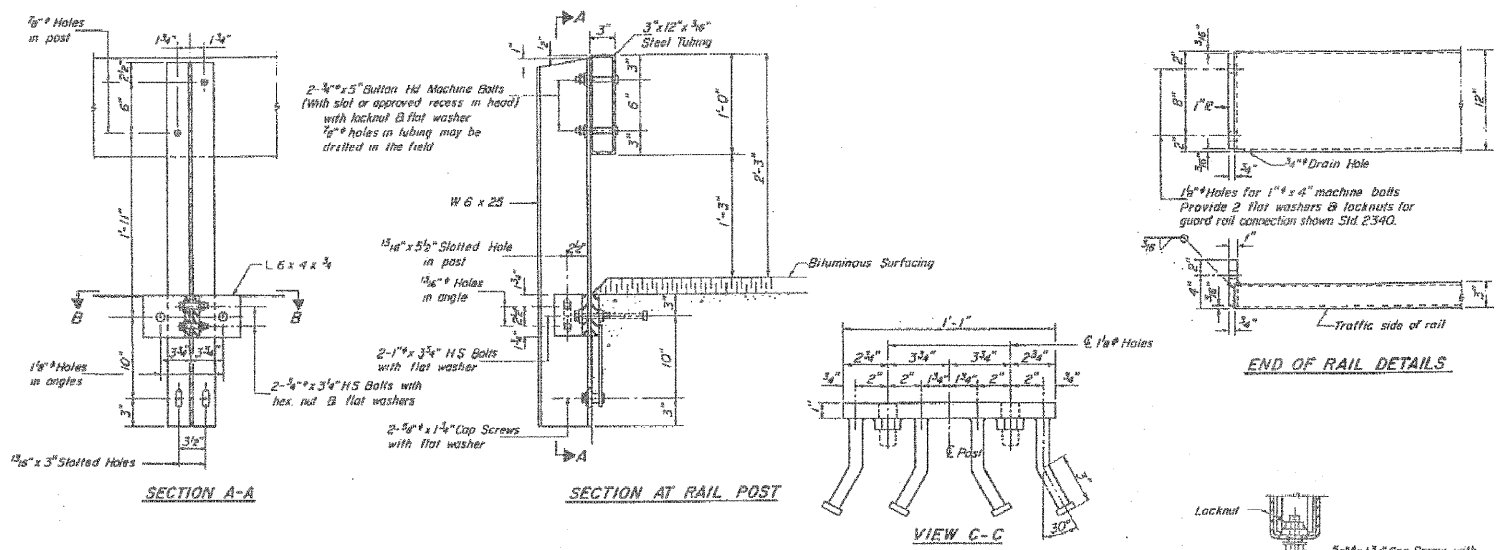
STATE OF ILLINOIS  
DEPARTMENT OF TRANSPORTATION

ROUTE NO.	SECTION	COUNTY	TOTAL SHEETS	SHEET NO.
F.A.P. 782	115BR-1	Hardin	83	41
FED. ROAD DIST. NO. 7	ILLINOIS	FED. AID PROJECT		

Contract #78026



PROJECT NO.	SECTION	COUNTY	TOTAL SHEETS	SHEET NO.
115A	HARDIN	18	18	9



**NOTES**

Hollow structural steel tubing shall conform to the requirements of ASTM designation A-500 Grade B or A-501 Structural Steel Tubing.

All other steel shapes and plates shall conform to the requirements of AASHTO M-183 except posts and angles shall conform to AASHTO M-223, Grade 50.

Bolts, cap screws, and nuts shall conform to the requirements of ASTM designation A-307 except for high strength bolts, nuts and washers noted which shall conform to AASHTO M-164.

All bars, nuts, cap screws, washers and lock washers shall be galvanized in accordance with AASHTO M-232.

All posts, railing, rail splices, anchor devices and angles shall be galvanized after shop fabrication in accordance with AASHTO M-111 and ASTM A-365.

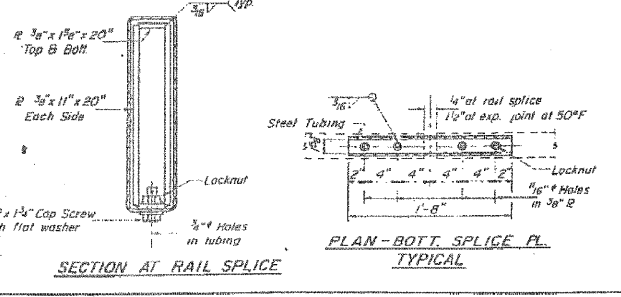
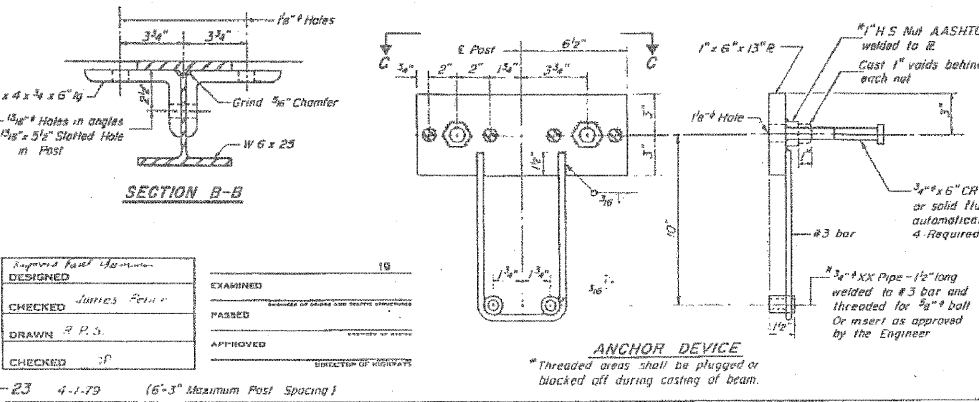
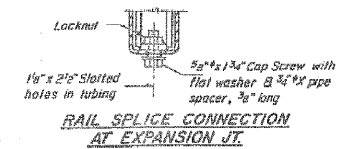
Galvanized rail shall not be painted.

Railing shall be in accordance with Section 509 of the Standard Specifications, except as noted, and shall be paid for at the contract unit price per lineal foot for STEEL RAILING, TYPE S.

All field drilled holes shall be coated with an approved zinc rich paint before erection.

The lower portion of the post flange in contact with concrete shall receive two coats of asphalt paint conforming to Section 714.08 Type B or place 6" fabric bearing pad between the post and concrete.

The 1" high strength bolts used to connect the 6 x 4 x 1/2 angles to the post shall be tightened in accordance with Article 507.D4(g)(3) of the Standard Specifications. The 1" high strength bolts connecting the angles to the concrete shall be tightened to a snug fit and given an additional 1/4 turn. The 3/8" cap screws in bottom of posts shall be tightened to a snug fit only.



**BILL OF MATERIAL**

Item	Unit	Quantity
Steel Railing, Type S	Lin Ft.	230

**TYPE S  
STEEL RAILING**  
F.A. RT. 782 SEC. 115A-DR  
HARDIN COUNTY  
STATION 927+65

DESIGNED	19
CHECKED	PASSED
DRAWN	APPROVED
CHECKED	

23 4-1-79 (6'-3" Maximum Post Spacing)

**HAMPTON, LENZINI & RENWICK, INC.**  
CIVIL & STRUCTURAL ENGINEERS  
LAND SURVEYORS

3085 STEVENSON DRIVE, SUITE 201  
SPRINGFIELD, ILLINOIS 62703  
(217) 546-3400

ELGIN • SPRINGFIELD

PROJECT NUMBER: 12-98-0016-1 DATE: 01/18/08  
DESIGNED: M.D.C. CHECKED: S.M.S. DRAWN: D.T.M.

**EXISTING STRUCTURE PLANS**  
IL. ROUTE 1 OVER HARRIS CREEK  
F.A.P. ROUTE 782 / SECTION 115BR-1  
HARDIN COUNTY  
STATION 927+65  
STRUCTURE NO. 035-0001