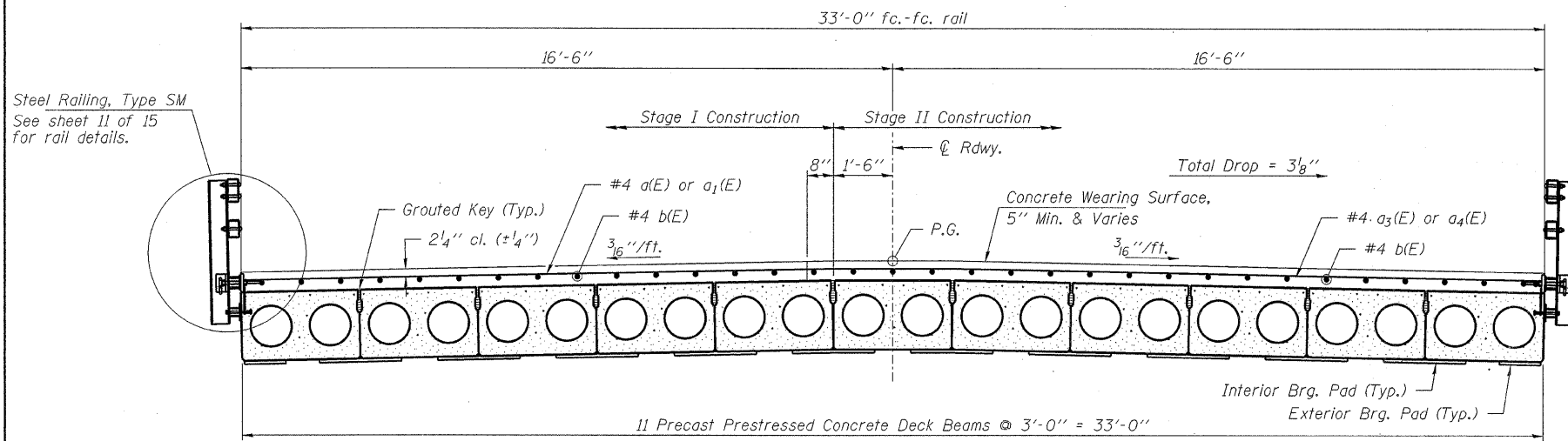


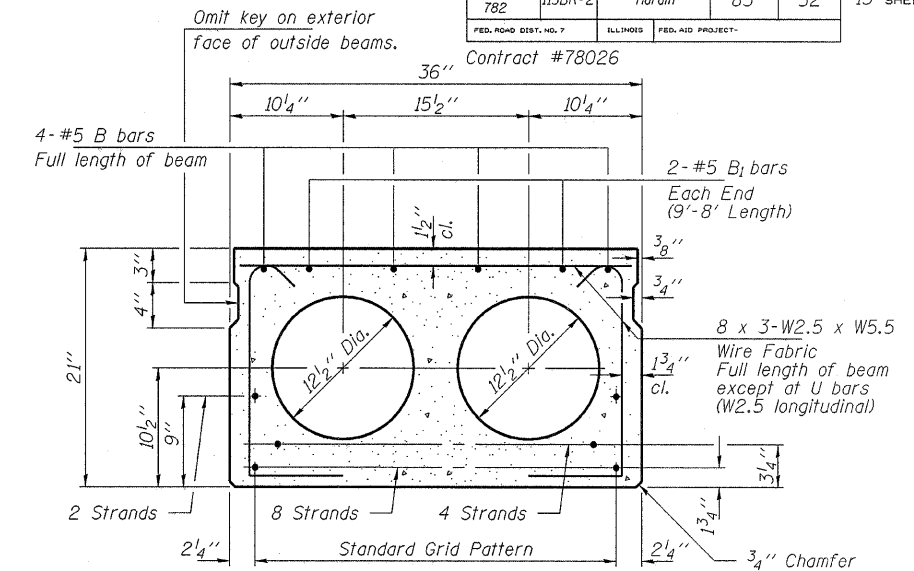
STATE OF ILLINOIS
DEPARTMENT OF TRANSPORTATION

ROUTE NO.	SECTION	COUNTY	STATION	SHEET NO.
F.A.P. 782	115BR-2	Hardin	83	52
FED. ROAD DIST. NO. 7	ILLINOIS	FED. AID PROJECT		

SHEET NO. 6
15 SHEETS



CROSS SECTION
(Looking Southeast)

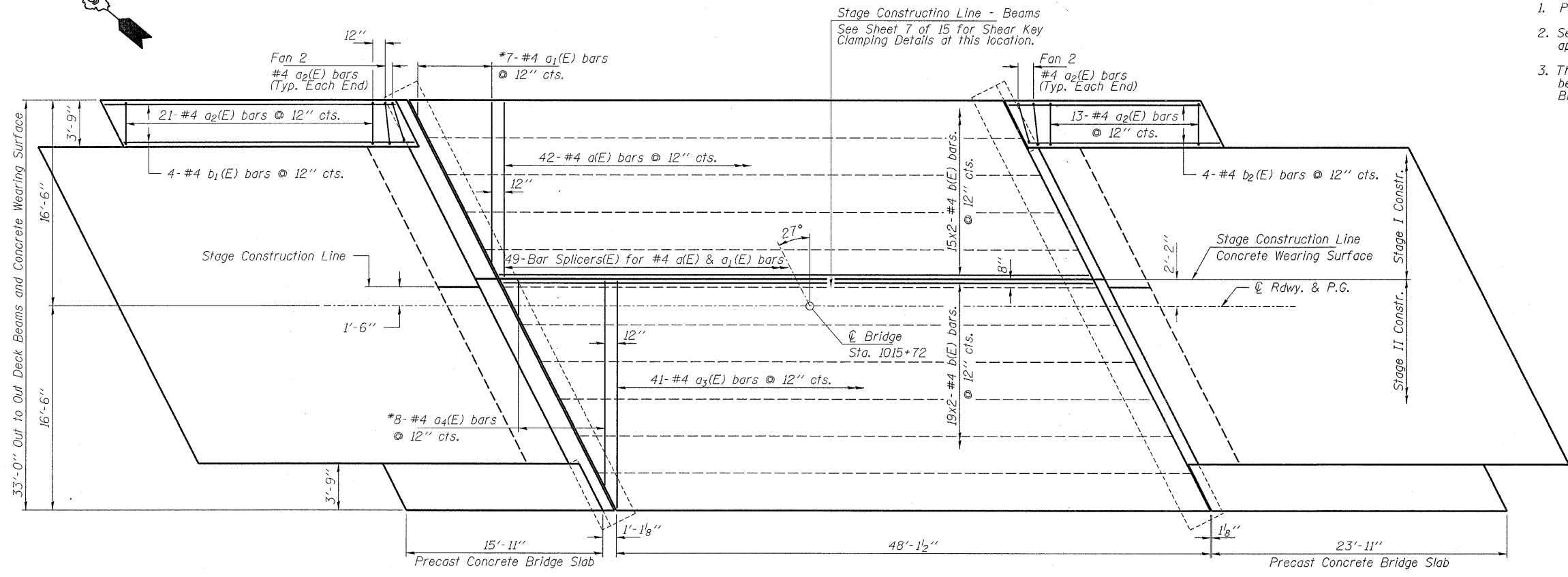


TYPICAL SECTION

14-1/2"φ Strands, Each Strand Stressed to 30,900 Lbs.
8-Strands 1 3/4" up, 4-Strands 3/4" up, 2-Strands 9" up

- Notes:
- Place strands symmetrically about C of beam.
 - See Sheet 7 of 15 for additional details applicable to fascia beams.
 - The R.C. Wearing Surface area covers the deck beams, PC Concrete Bridge Slabs and Abut. Hatch Blocks detailed on Sheet 8 of 15.

MIN. BAR LAP
#4 bar = 1'-8"

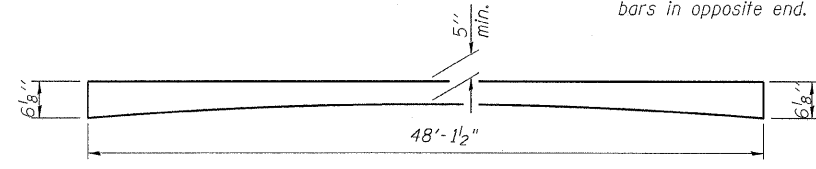


PLAN - R.C. WEARING SURFACE

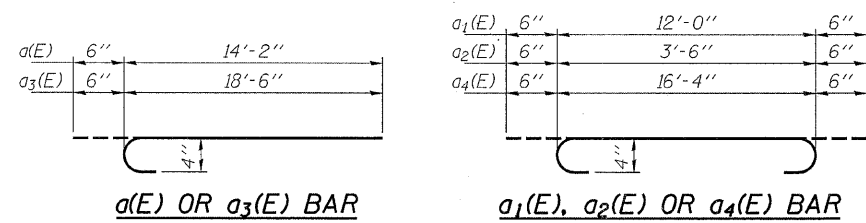
BILL OF MATERIAL

BAR	NO.	SIZE	LENGTH	SHAPE
a(E)	42	#4	14'-8"	U
a1(E)	7	#4	13'-0"	U
a2(E)	84	#4	4'-6"	U
a3(E)	41	#4	19'-0"	U
a4(E)	8	#4	17'-4"	U
b(E)	68	#4	24'-9"	—
b1(E)	8	#4	23'-8"	—
b2(E)	8	#4	15'-8"	—
Reinforcement Bars, Epoxy Coated			Pound	2,680
Concrete Wearing Surface, 5"			Sq. Yd.	220.3
Bridge Deck Grooving			Sq. Yd.	220.3
Precast Prestressed Concrete Deck Beams (21" Depth)			Sq. Ft.	1,589
Protective Coat			Sq. Yd.	220.3

Bars indicated thus 15x2-#4 etc. indicates 15 lines of bars with 2 lengths per line.
For additional superstructure details, see sheets 7 & 8 of 15.



REINFORCED CONCRETE WEARING SURFACE PROFILE



a(E) OR a3(E) BAR

a1(E), a2(E) OR a4(E) BAR

HAMPTON, LENZINI & RENWICK, INC.
CIVIL & STRUCTURAL ENGINEERS
LAND SURVEYORS

3085 STEVENSON DRIVE, SUITE 201
SPRINGFIELD, ILLINOIS 62703
(217) 546-3400

ELGIN • SPRINGFIELD

PROJECT NUMBER: 12-98-0016-1 DATE: 01/18/08
DESIGNED: M.D.C. CHECKED: P.S.L. DRAWN: D.T.M.

SUPERSTRUCTURE

IL. ROUTE 1 OVER BRANCH OF ROCK CREEK
F.A.P. ROUTE 782 / SECTION 115BR-2
HARDIN COUNTY
STATION 1015+72
STRUCTURE NO. 035-0003