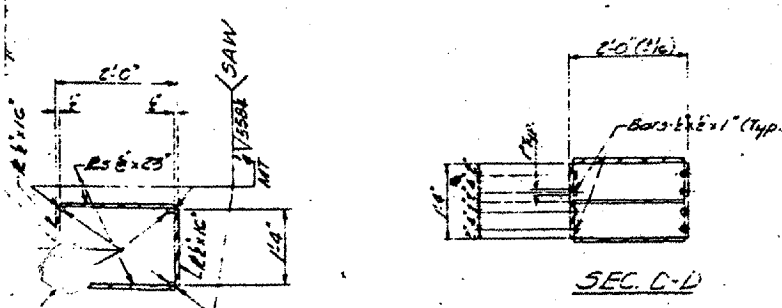
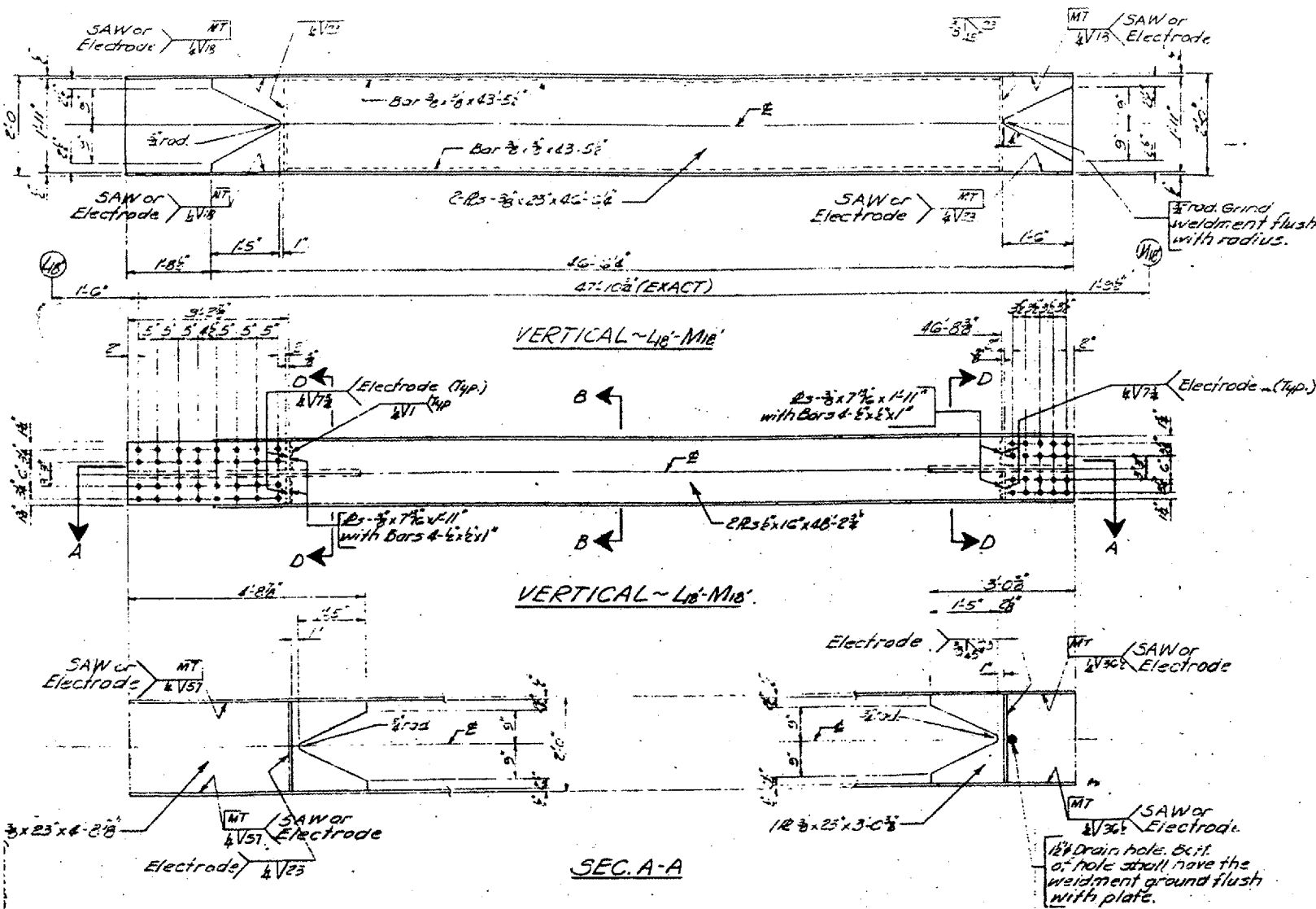
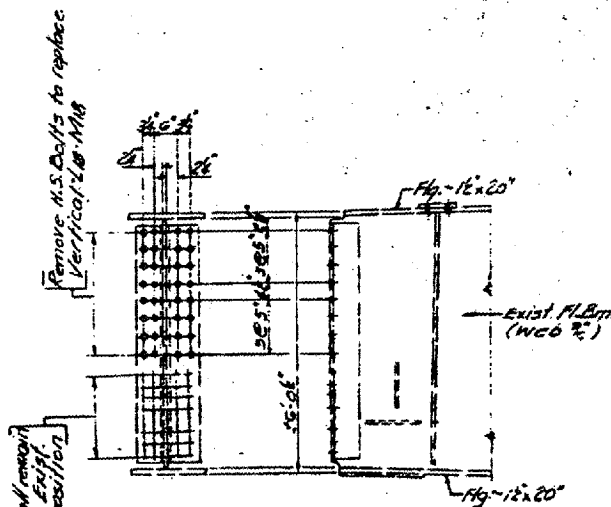


STATE OF ILLINOIS  
DEPARTMENT OF TRANSPORTATION

CONTRACT: 78040  
ROUTE: F.A.I. 57  
SECTION: (02-1B-1)P-1  
COUNTY: ALEXANDER, IL; MISSISSIPPI, MO  
SHEET 15 OF 67  
FOR INFORMATION ONLY



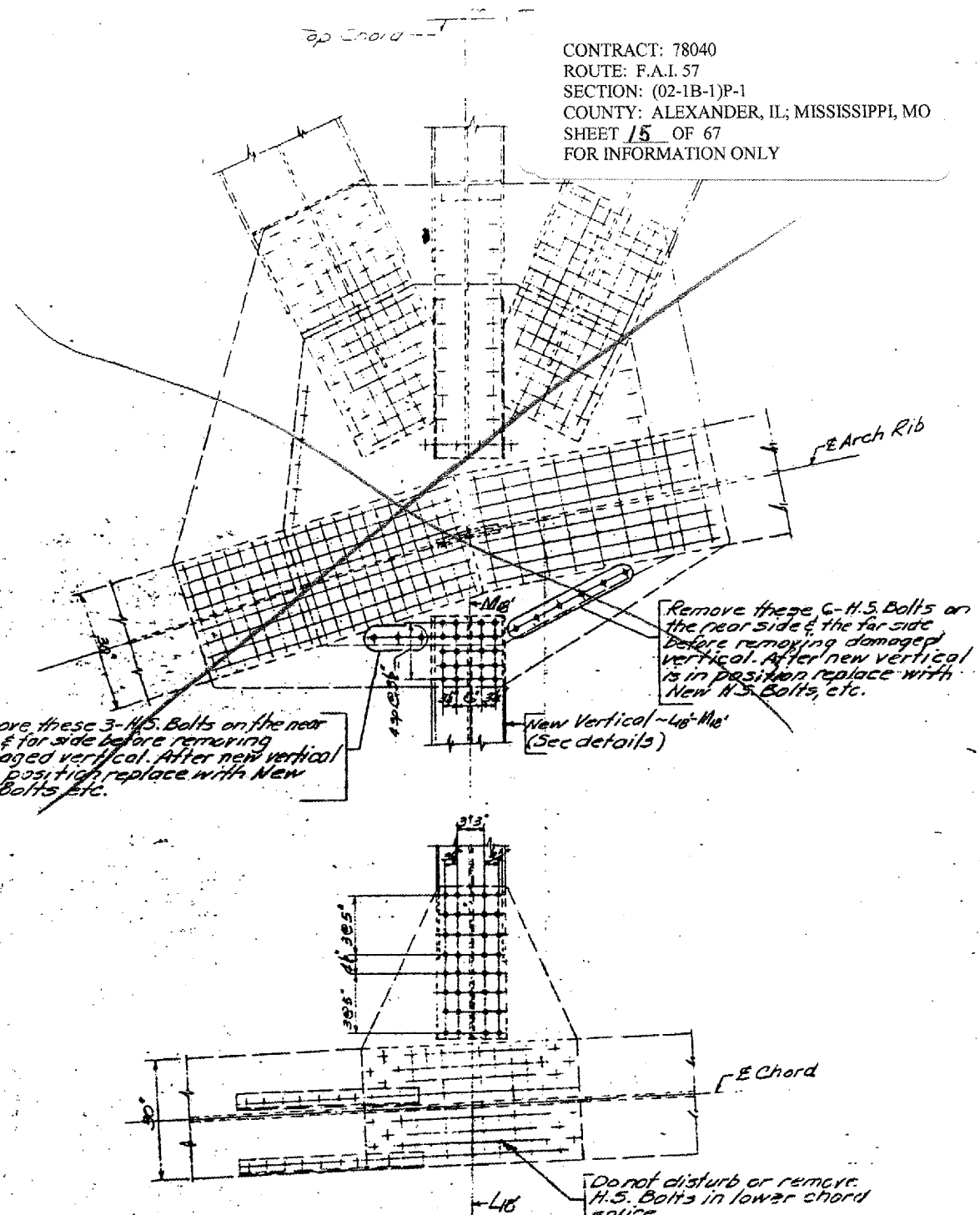
- NOTES**
1. All connection holes in vertical L18-M16 shall be subpunched or subdrilled 1 1/2" and reamed in the field to the same dia. as existing holes in gussets (1 1/2"). Use New 1" A.S. Bolts in connection.
  2. Electrodes maybe E 7028 or E 7018.
  3. Member must be square at connections.
  4. Dimensions & Details of L18-M16 are from original contract fabrication plans.



DETAIL OF F.L.B.M. CONNECTION

Remove these 3 H.S. Bolts on the near side & far side before removing damaged vertical. After new vertical is in position replace with New H.S. Bolts etc.

Remove these 6 H.S. Bolts on the rear side & the far side before removing damaged vertical. After new vertical is in position replace with New H.S. Bolts, etc.



DETAIL OF EXISTING L18-M16 CONNECTIONS  
(Looking Upstream)

**BILL OF MATERIAL**

Item	Unit	Total
Reinforcing Structural Steel	Lbs.	6,020
Erecting Structural Steel	Lbs.	6,020

SIGNED ENR  
CHECKED A.P.W.  
DRAWN ENR  
CHECKED A.P.W.

Dec 17 1989  
EXAMINED O.J. Rohrer  
PASSED  
APPROVED

BRIDGE NO. 1  
STRUCTURE NO. 002-0022  
FOR INFORMATION ONLY

L18-M16 MEMBER & DETAILS  
F.A.I.-57 OVER MISSISSIPPI RIVER  
F.A.I. RT. 57 SEC. 02-1B-1-I-DL-1  
ALEXANDER COUNTY