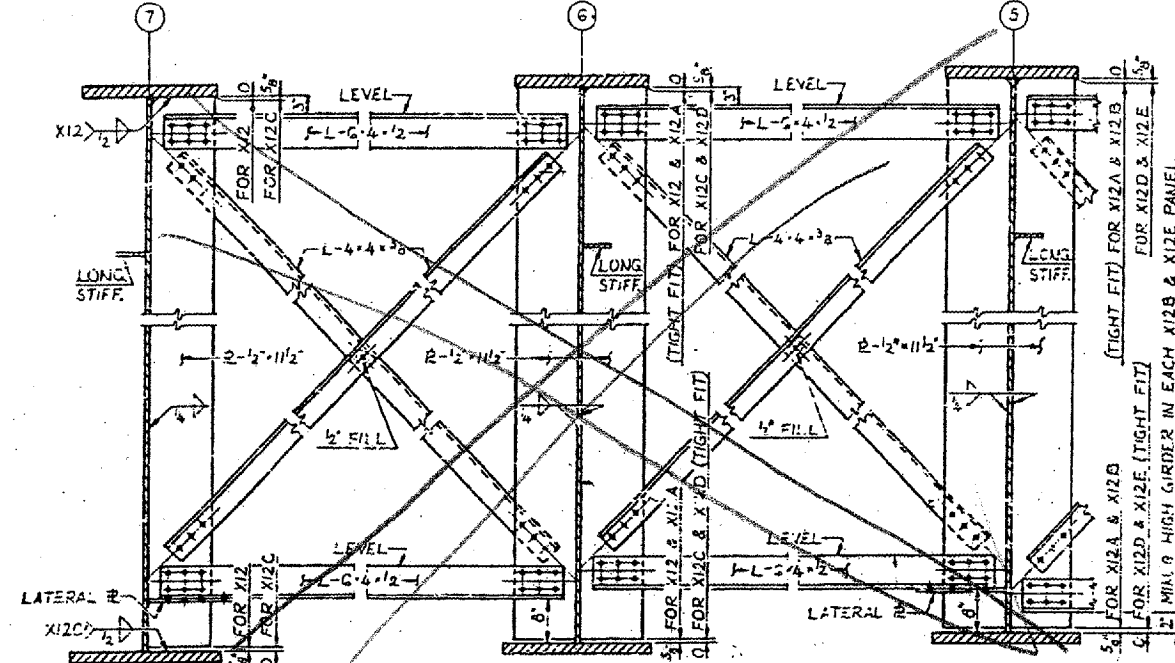
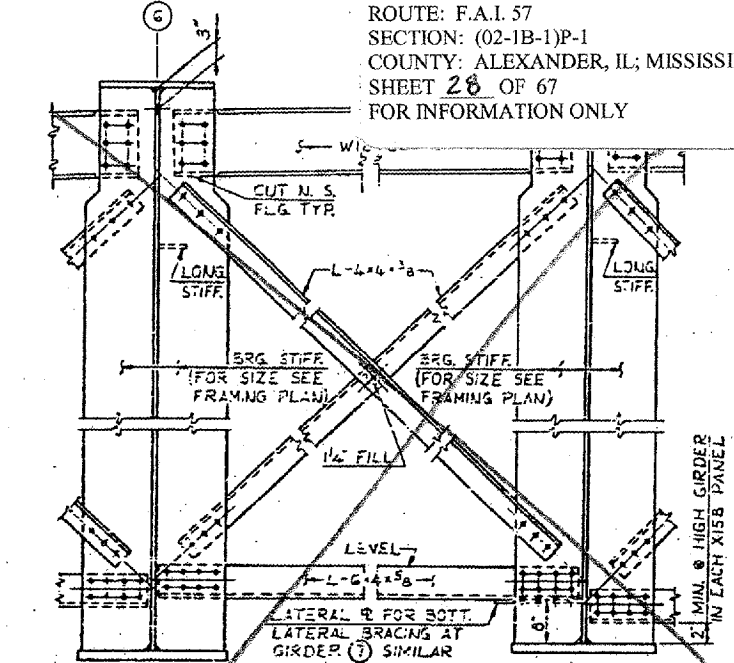


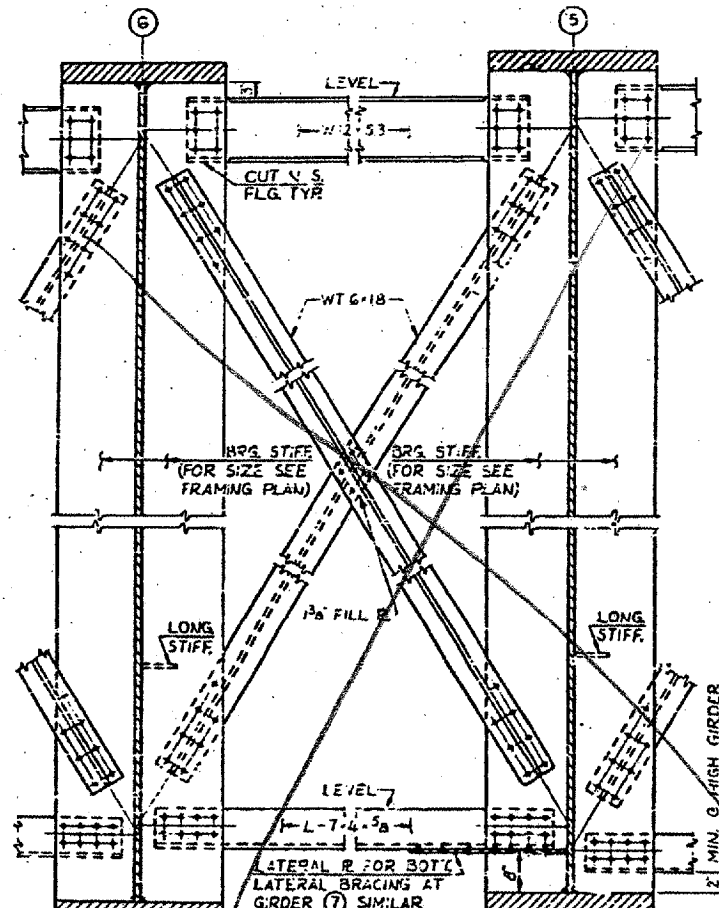
XII X11A X11B  
**CROSSFRAME XII, X11A & X11B**  
 DETAILS OF XII & X11B NOT SHOWN OR NOTED, SIMILAR TO X11A



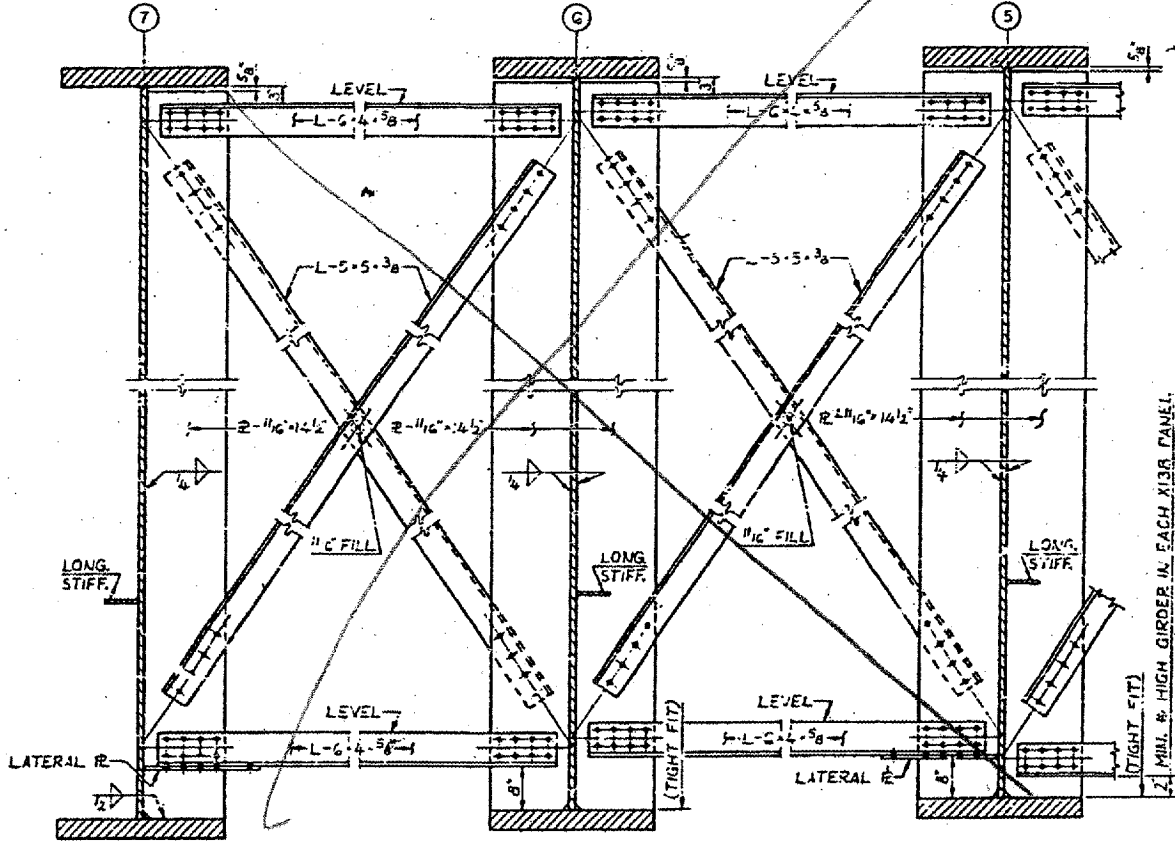
X12 & X12C X12A & X12D X12B & X12E  
**INTERMEDIATE CROSSFRAME X12, X12A, X12B, X12C, X12D & X12E**  
 DETAILS OF X12B & X12E NOT SHOWN OR NOTED, SIMILAR TO X12A & X12D



X15 X15A X15B  
**CROSSFRAME X15, X15A & X15B**  
 DETAILS OF X15 & X15B NOT SHOWN OR NOTED, SIMILAR TO X15A



X14 X14A X14B  
**CROSSFRAME X14, X14A & X14B**  
 DETAILS OF X14 & X14B NOT SHOWN OR NOTED, SIMILAR TO X14A



X13 X13A X13B  
**INTERMEDIATE CROSSFRAME X13, X13A & X13B**  
 DETAILS OF X13B NOT SHOWN OR NOTED, SIMILAR TO X13A

NOTES:  
 ALL MATERIAL ASTM A36 UNLESS NOTED.  
 ALL FASTENERS SHALL BE 3/8" Ø ASTM A325 HIGH STRENGTH BOLTS UNLESS NOTED.

BRIDGE NO. 1  
 STRUCTURE NO. 002-0022  
 FOR INFORMATION ONLY

STEEL DETAILS - SPANS 8A AND 9:  
 F. A. I. RTE. 57 OVER THE MISSISSIPPI RIVER  
 PROJECT 1-57-9(5)D  
 SECTION (02-1B-1)D  
 ALEXANDER COUNTY, ILLINOIS  
 MISSISSIPPI COUNTY, MISSOURI  
 STA. 1141 + 84.75 TO STA. 1182 + 75.25