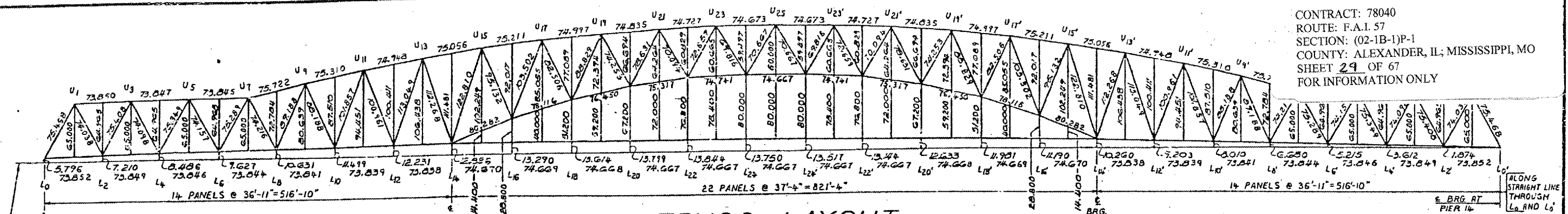


CONTRACT: 78040
 ROUTE: F.A.I. 57
 SECTION: (02-1B-1)P-1
 COUNTY: ALEXANDER, IL; MISSISSIPPI, MO
 SHEET 29 OF 67
 FOR INFORMATION ONLY

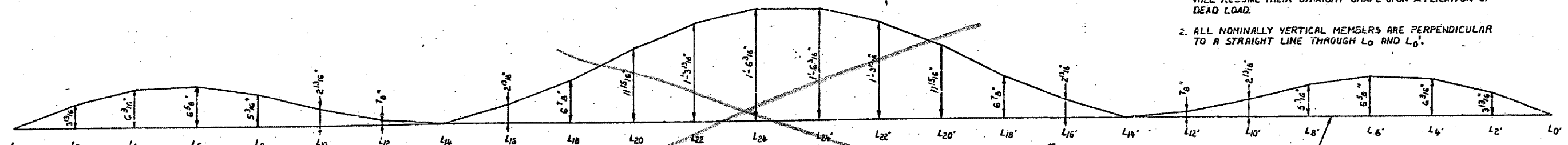


TRUSS LAYOUT

SHOWING THEORETICAL LENGTHS OF MEMBERS AND FINAL POSITION OF BOTTOM CHORD. THIS CONFIGURATION IS TO BE ATTAINED AFTER ALL DEAD LOAD DEFLECTION (EXCEPT THAT CAUSED BY THE WEIGHT OF THE INITIAL WEARING SURFACE) HAS TAKEN PLACE. ALL THE LENGTHS AND OFFSETS SHOWN ARE IN FEET. SCALE: 1"=60'-0"

NOTES:

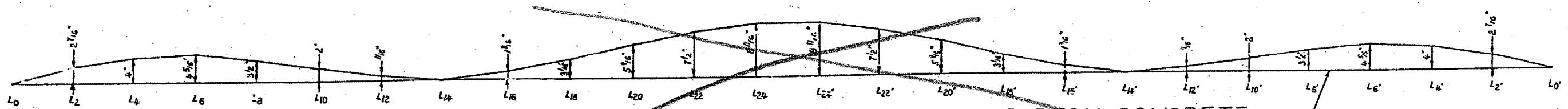
1. WITH THE TRUSS IN ITS FINAL POSITION (AFTER DEAD LOAD DEFORMATION HAS TAKEN PLACE), ALL MEMBERS ARE TO BE STRAIGHT. ALL MEMBERS SHALL BE FABRICATED STRAIGHT. THE FABRICATED LENGTHS OF MEMBERS ARE SUCH THAT SOME CHORD MEMBERS WILL HAVE TO BE FORCED INTO A CURVED POSITION DURING ERECTION; THESE MEMBERS WILL RESUME THEIR STRAIGHT SHAPE UPON APPLICATION OF DEAD LOAD.
2. ALL NOMINALLY VERTICAL MEMBERS ARE PERPENDICULAR TO A STRAIGHT LINE THROUGH L₀ AND L₀'.



BLOCKING ORDINATES FOR TOTAL DEAD LOAD*

ORDINATES ARE SHOWN RELATIVE TO THE FINAL POSITION OF THE BOTTOM CHORD
 * EXCLUDING WEIGHT OF INITIAL WEARING SURFACE

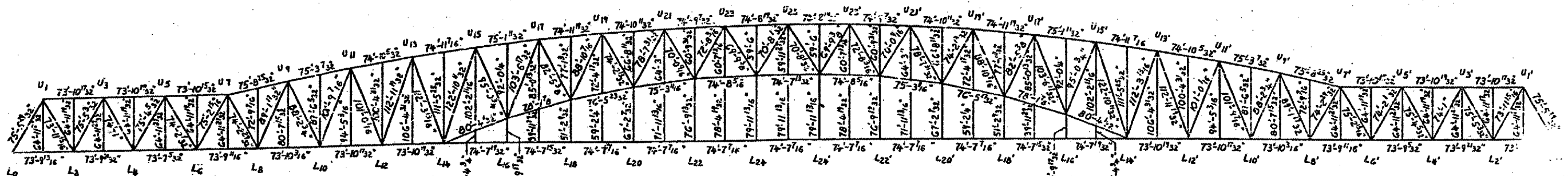
REFERENCE LINE REPRESENTING FINAL POSITION OF BOTTOM CHORD (SHOWN STRAIGHT FOR CONVENIENCE)



BLOCKING ORDINATES FOR WEIGHT OF DECK CONCRETE

ORDINATES ARE SHOWN RELATIVE TO THE FINAL POSITION OF THE BOTTOM CHORD

REFERENCE LINE REPRESENTING FINAL POSITION OF BOTTOM CHORD (SHOWN STRAIGHT FOR CONVENIENCE)



FABRICATED LENGTHS

THE LENGTHS SHOWN ARE THE THEORETICAL LENGTHS OF MEMBERS CORRECTED FOR DEFORMATION DUE TO DEAD LOAD. SCALE: 1"=60'-0"

BRIDGE NO 1
 STRUCTURE NO. 002-0022
 FOR INFORMATION ONLY

TRUSS LAYOUT & BLOCKING ORDINATES
 F. A. I. RTE. 57 OVER THE MISSISSIPPI RIVER
 PROJECT 1-57-9(5)D
 SECTION (02-1B-1)D
 ALEXANDER COUNTY, ILLINOIS
 MISSISSIPPI COUNTY, MISSOURI
 STA. 1141 + 84.75 TO STA. 1182 + 75.25