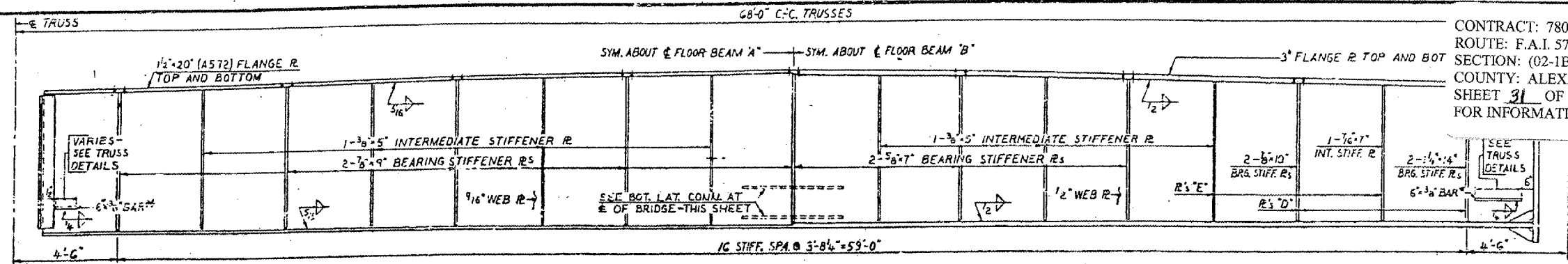


CONTRACT: 78040  
 ROUTE: F.A.I. 57  
 SECTION: (02-1B-1)P-1  
 COUNTY: ALEXANDER, IL; MISSISSIPPI, MO  
 SHEET 31 OF 67  
 FOR INFORMATION ONLY

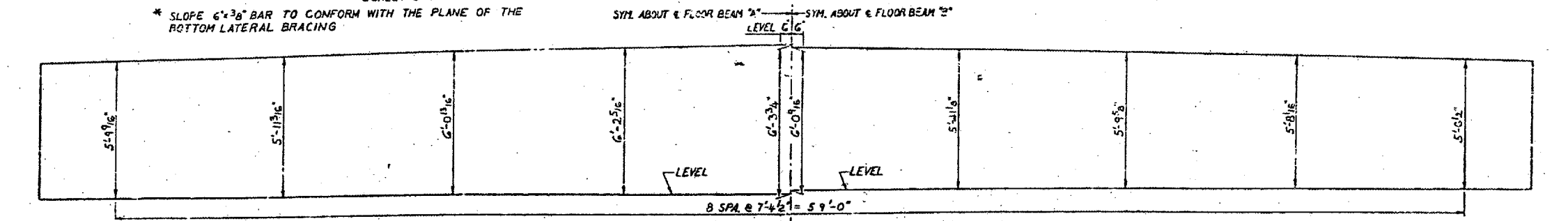


HALF ELEVATION INTERMEDIATE FLOOR BEAM "A"  
 SCALE: 3/8"=1'-0"

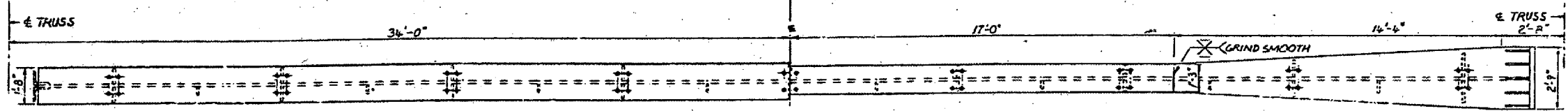
HALF ELEVATION INTERMEDIATE FLOOR BEAM "B"  
 SCALE: 3/8"=1'-0"

\* SLOPE 6"x3/8" BAR TO CONFORM WITH THE PLANE OF THE BOTTOM LATERAL BRACING

NOTE: FOR LOCATION OF FLOOR BEAMS "A" & "B" SEE FRAMING PLAN, SHT. 49

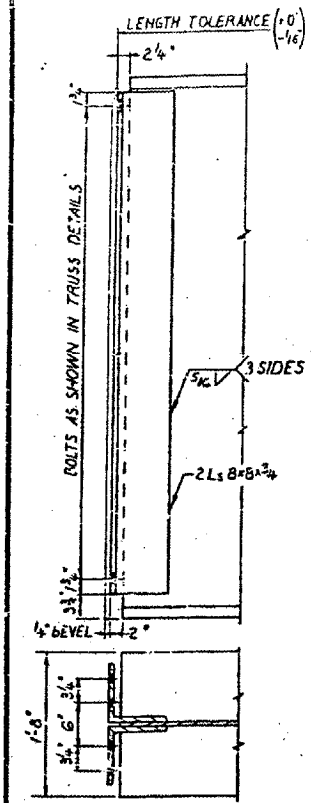


WEB PLATE OFFSETS CAMBERED FOR CROWN & TOTAL DEAD LOAD DEFLECTIONS OF FLOOR BEAMS "A" & "B"

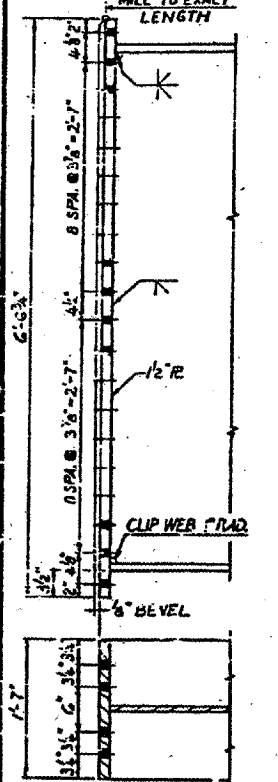


HALF PLAN INTERMEDIATE FLOOR BEAM "A"  
 (LATERAL R<sub>s</sub> NOT SHOWN)  
 SCALE: 3/8"=1'-0"

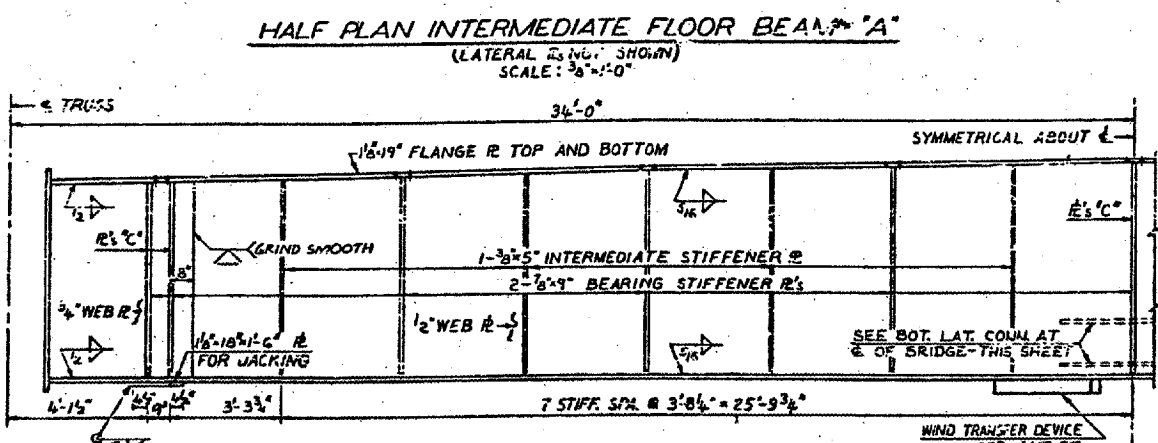
HALF PLAN INTERMEDIATE FLOOR BEAM "B"  
 (LATERAL R<sub>s</sub> NOT SHOWN)  
 SCALE: 3/8"=1'-0"



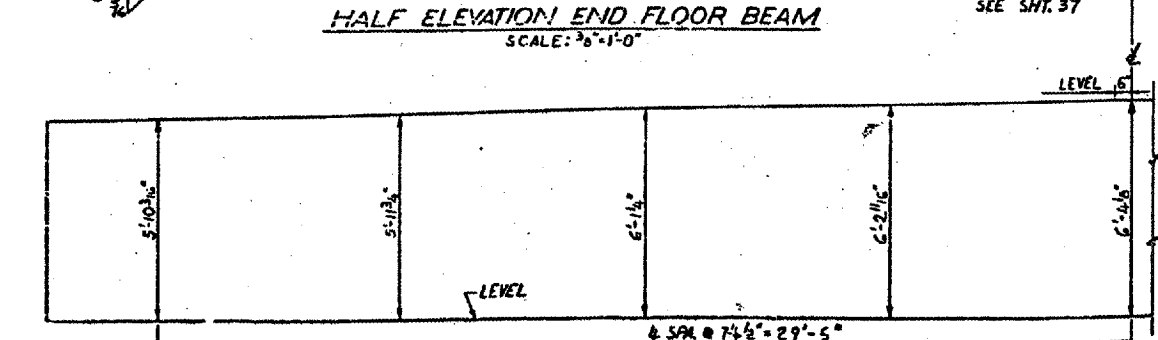
FLOOR BEAM "A" CONNECTION  
 (LATERAL R<sub>s</sub> NOT SHOWN)  
 SCALE: 1"=1'-0"



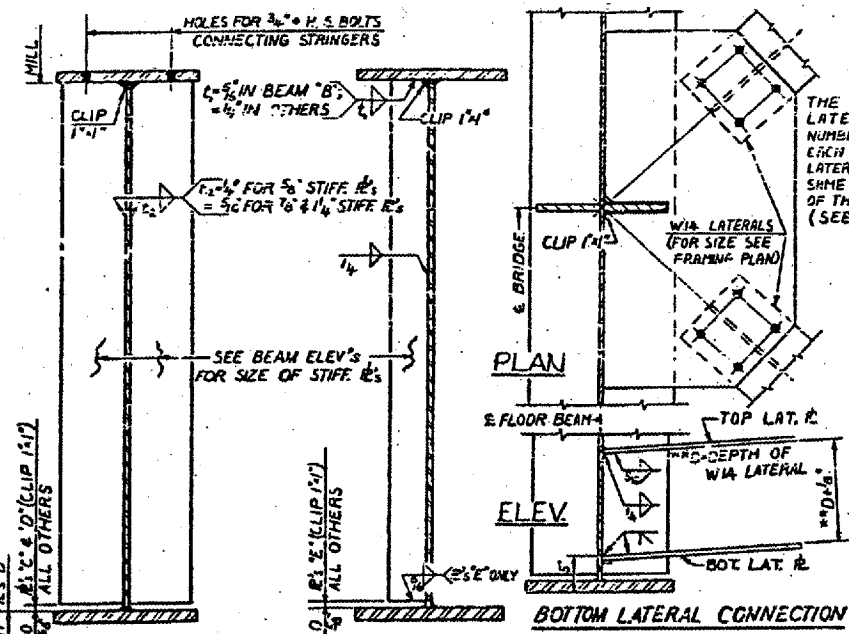
END FLOOR BEAM CONNECTION  
 SCALE: 1"=1'-0"



HALF ELEVATION END FLOOR BEAM  
 SCALE: 3/8"=1'-0"



WEB PLATE OFFSETS CAMBERED FOR CROWN & TOTAL DEAD LOAD DEFLECTION OF END FLOOR BEAM



BEARING STIFFENER  
 SCALE: 1"=1'-0"

INTERMEDIATE STIFFENER  
 SCALE: 1"=1'-0"

THE THICKNESS OF THE LATERAL R<sub>s</sub> AND THE NUMBER OF BOLTS CONNECTING EACH VIA LATERAL TO THE LATERAL R<sub>s</sub> SHALL BE THE SAME AS AT THE CONNECTION OF THE LATERAL TO THE TRUSS. (SEE TRUSS DETAILS)

NOTES:  
 ALL MATERIAL ASTM A36 UNLESS NOTED.

BRIDGE NO. 1  
 STRUCTURE NO. 002-0022  
 FOR INFORMATION ONLY

FLOOR BEAMS - SPANS 12, 13 & 14  
 F.A.I. RTE. 57 OVER THE MISSISSIPPI RIVER  
 PROJECT 1-57-9(5)D  
 SECTION (02-1B-1)D  
 ALEXANDER COUNTY, ILLINOIS  
 MISSISSIPPI COUNTY, MISSOURI  
 STA. 1141 + 84.75 TO STA. 1182 + 75.25

ALFRED BENESCH & COMPANY  
 CONSULTING ENGINEERS  
 102 WABASH AVE. CHICAGO, ILLINOIS