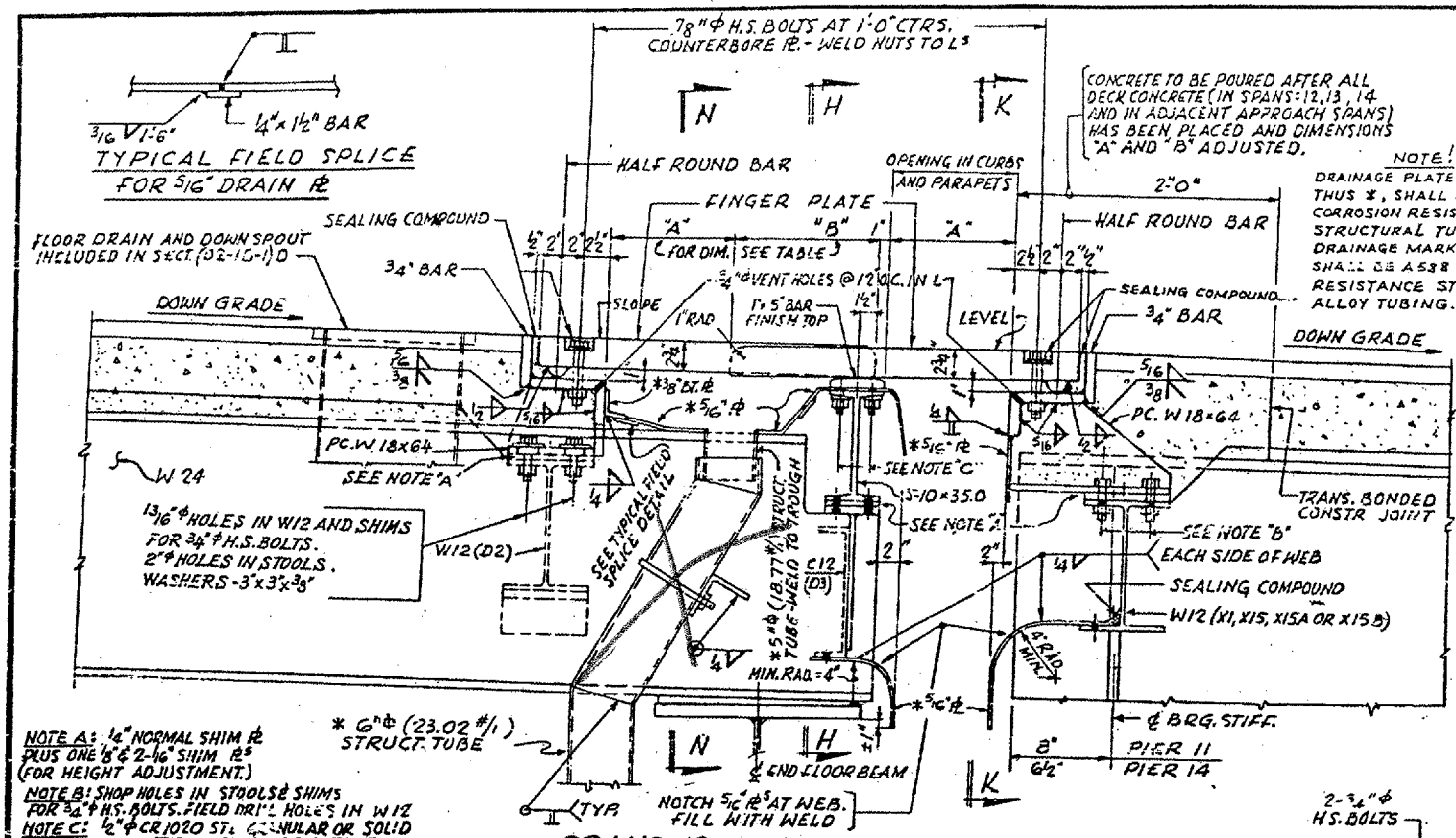


CONTRACT: 78040  
 ROUTE: F.A.I. 57  
 SECTION: (02-1B-1)P-1  
 COUNTY: ALEXANDER, IL; MISSISSIPPI, MO  
 SHEET 37 OF 67  
 FOR INFORMATION ONLY

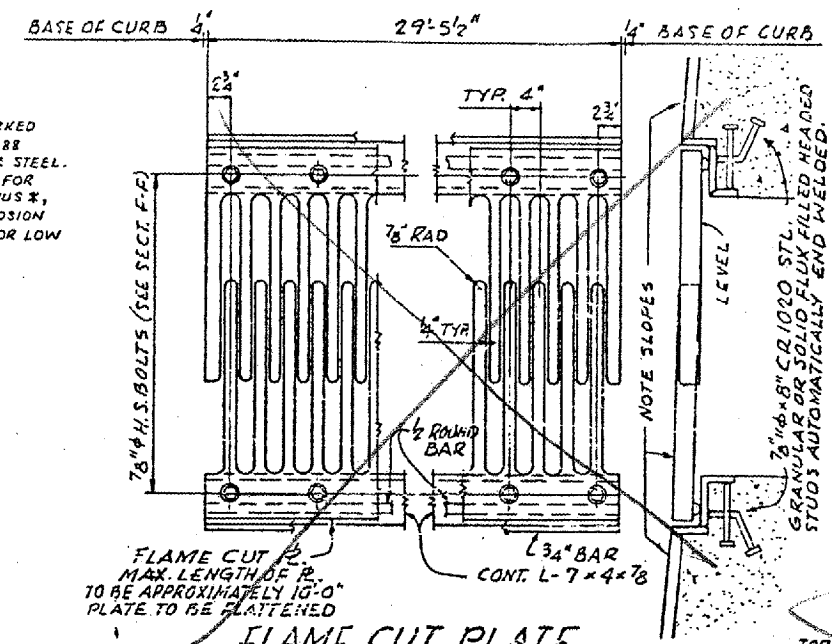
TABLE OF 'A' AND 'B' DIMENSIONS

TEMP (F)	BEFORE DECK CONCRETE IN SPANS 12, 13 & 14 IS POURED		AFTER DECK CONCRETE IN SPANS 12, 13 & 14 IS POURED	
	A	B	A	B
130	6 5/16	18 1/2	6 1/2	18 1/2
110	8 1/4	16 3/4	8 5/16	16 3/4
90	10 3/16	14 1/2	10 3/16	14 1/2
70	12 1/4	12 1/2	12 1/4	12 1/2
50	14 1/4	10 1/2	14 1/4	10 1/2
30	15 5/8	9 1/2	15 5/8	9 1/2
10	17 3/8	8 1/2	17 3/8	8 1/2
-10	19 1/4	7 1/2	19 1/4	7 1/2
-30	21 1/8	6 1/2	21 1/8	6 1/2

\* TEMPERATURE AT TIME OF ADJUSTMENT OF EXPANSION GUARD

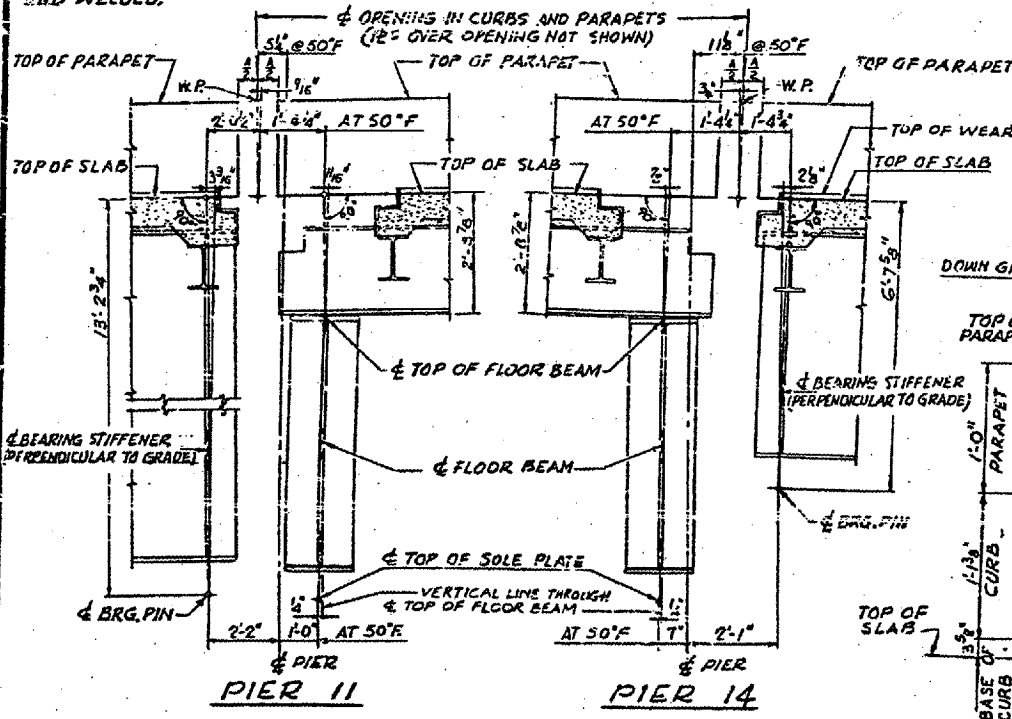


SECTION F-F  
 SCALE: 1/2" = 1'-0"

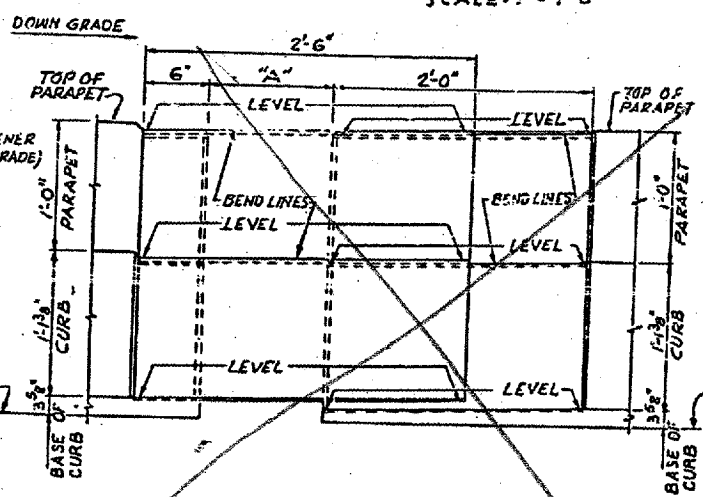


FLAME CUT PLATE  
 SCALE: 1" = 1'-0"

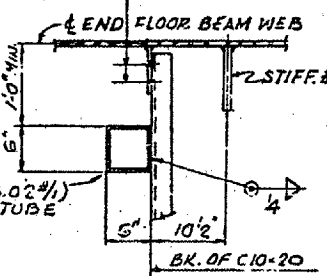
NOTE A: 1/4" NORMAL SHIM # PLUS ONE 1/8" & 2-1/16" SHIM # (FOR HEIGHT ADJUSTMENT.)  
 NOTE B: SHOP HOLES IN STOODLS SHIMS FOR 3/4" H.S. BOLTS. FIELD DRILL HOLES IN W12 FLUX FILLED, THREADED STUDS AUTO. END WELDED AT 7/8" ALT. CTRS. 1/16" HOLES IN FIG. OF S10, BEVELED WASHERS AND SELF-LOCK NUTS.  
 NOTE C: 1/2" CR 1020 STL. GRANULAR OR SOLID FLUX FILLED, THREADED STUDS AUTO. END WELDED AT 7/8" ALT. CTRS. 1/16" HOLES IN FIG. OF S10, BEVELED WASHERS AND SELF-LOCK NUTS.  
 NOTE D: 3/4" CR 1020 STL. GRANULAR OR SOLID FLUX FILLED HEADED STUDS AUTOMATICALLY END WELDED.



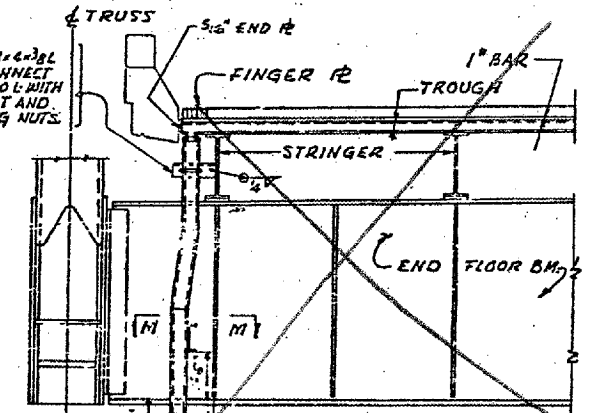
WORK LINES  
 SCALE: 1/2" = 1'-0"



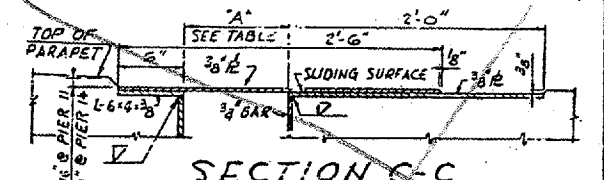
ELEVATION OF CURB AND PARAPET  
 SCALE: 1/2" = 1'-0"



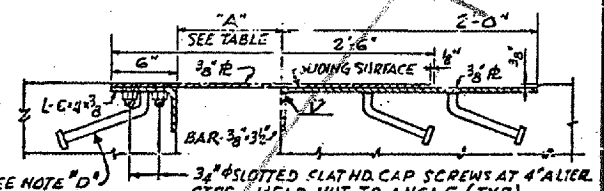
SECTION M-M  
 SCALE: 1" = 1'-0"



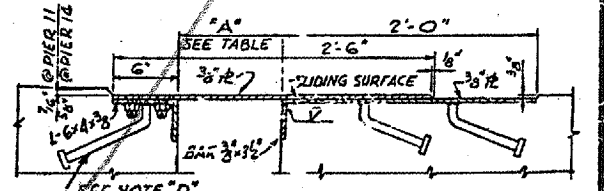
SECTION N-N  
 SCALE: 3/8" = 1'-0"



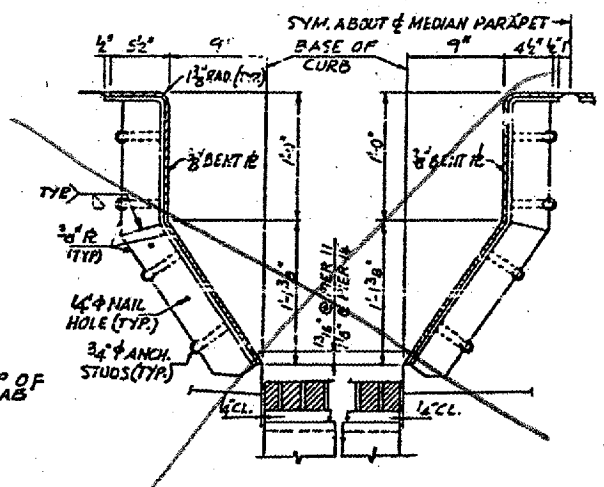
SECTION C-C



SECTION D-D



SECTION E-E  
 SCALE: 1/2" = 1'-0"



SECTION A-A SECTION B-B  
 SCALE: 1/2" = 1'-0"

BRIDGE NO 1  
 STRUCTURE NO. 002-0022  
 FOR INFORMATION ONLY

EXPANSION GUARD - PIER 12 & 14  
 F.A.I. RTE. 57 OVER THE MISSISSIPPI RIVER  
 PROJECT 1-57-9  
 SECTION 02-1B-1P  
 ALEXANDER COUNTY, ILLINOIS  
 MISSISSIPPI COUNTY, MISSOURI  
 STA. 1141 + 84.75 TO STA. 1182 + 75.25

ALFRED BENESCH & COMPANY  
 CONSULTING ENGINEERS  
 108 WABASH AVE. CHICAGO, ILLINOIS