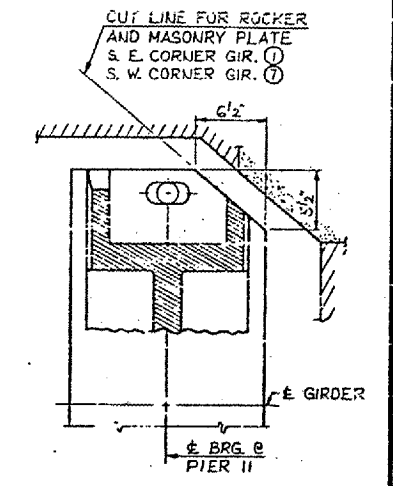
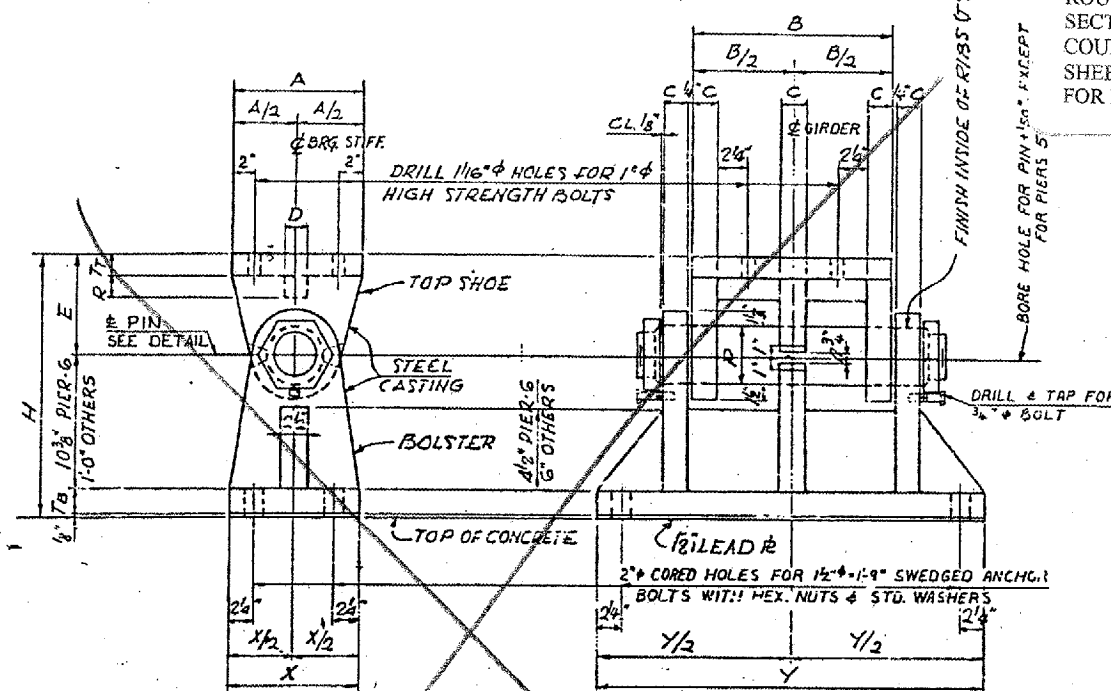
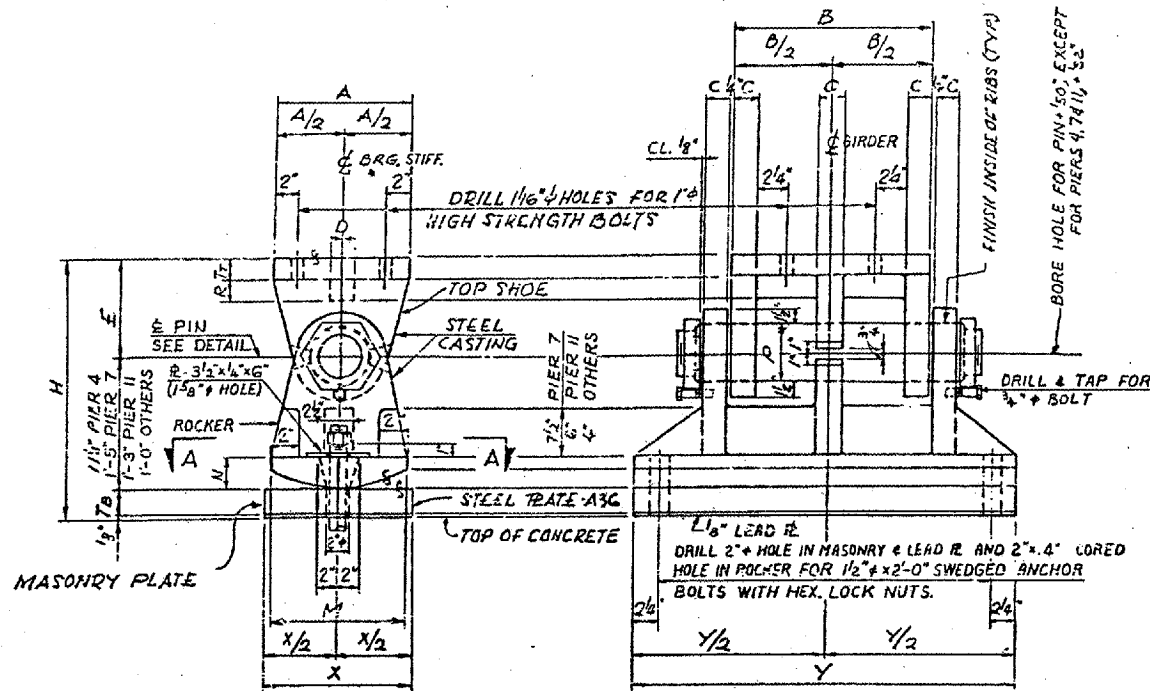


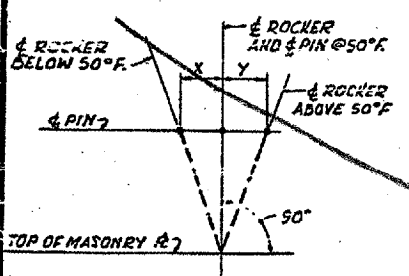
CONTRACT: 78040
 ROUTE: F.A.I. 57
 SECTION: (02-1B-1)P-1
 COUNTY: ALEXANDER, IL; MISSISSIPPI, MO
 SHEET 39 OF 67
 FOR INFORMATION ONLY



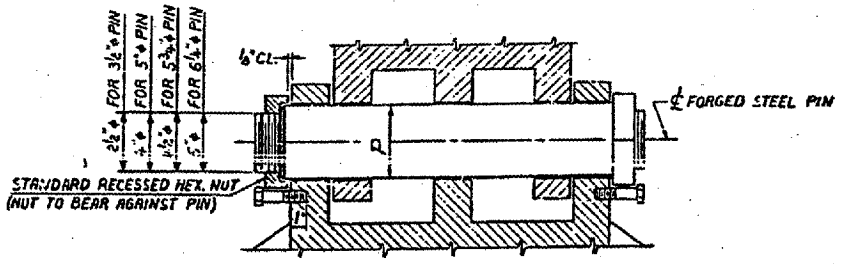
LOCATION	TOP SHOE							PIN φ	ROCKER	MASONRY PLATE				
	A	B	Tt	C	D	E	R			P	M	N	X	Y
NORTH ABUTMENT	1'-0"	1'-4"	1'-2"	1'-2"	1'-2"	9"	2"	3 1/2"	1'-0"	2'-2"	1'-0"	2'-7"	1'-2"	1'-10 1/2"
PIER 2	1'-0"	1'-4"	2"	2'-4"	2"	9"	2"	5"	1'-0"	2'-2"	1'-0"	2'-9"	2"	1'-11 1/2"
PIER 3	1'-0"	1'-6"	2"	2'-4"	2"	9"	2"	5"	1'-0"	2'-2"	1'-1"	2'-11"	2'-6"	1'-11 3/4"
PIER 4	1'-3"	1'-8"	2"	2'-2"	2"	9"	2'-2"	5 3/4"	1'-0"	2'-2"	1'-3"	3'-2"	2'-2"	1'-10 1/2"
PIER 7	1'-3"	2'-3"	2'-2"	3'-6"	3'-6"	10'-2"	4'-4"	6'-6"	1'-3"	2'-2"	1'-10"	4'-0"	3'-2"	2'-7 1/2"
PIER II-SPAN 9A	1'-3"	2'-0"	2"	2'-2"	2'-2"	9"	3'-2"	5'-3/4"	1'-3"	3'-2"	1'-6"	3'-7"	2'-2"	2'-2 1/2"
PIER II-SPAN 15	1'-0"	1'-4"	1'-2"	1'-2"	1'-2"	9"	2"	3 1/2"	1'-0"	2'-2"	1'-0"	2'-7"	1'-2"	1'-10 1/2"
PIER 15	1'-0"	1'-4"	2"	2'-4"	2"	9"	2"	5"	1'-0"	2'-2"	1'-1"	2'-9"	2'-6"	1'-11 1/2"
PIER 18	1'-0"	1'-4"	2"	2'-4"	2"	9"	2"	5"	1'-0"	2'-2"	1'-1"	2'-9"	2'-4"	1'-11 1/2"
SOUTH ABUTMENT	1'-0"	1'-4"	1'-2"	1'-2"	1'-2"	9"	2"	3 1/2"	1'-0"	2'-2"	1'-0"	2'-7"	1'-2"	1'-10 1/2"

LOCATION	TOP SHOE							PIN φ	BOLSTER			
	A	B	Tt	C	D	E	R		P	X	Y	TB
PIER 1	1'-0"	1'-6"	2"	2'-4"	2"	9"	2"	5"	1'-2"	2'-11"	2'-2"	1'-11 1/2"
PIER 5	1'-3"	1'-8"	2"	2'-4"	2"	9"	2'-2"	5 3/4"	1'-3"	3'-2"	2'-2"	1'-11 1/2"
PIER 6	1'-3"	1'-8"	2"	2'-4"	2"	9"	2'-2"	5 3/4"	1'-3"	3'-2"	2'-2"	1'-10 1/2"
PIER 16	1'-0"	1'-4"	2"	2'-4"	2"	9"	2"	5"	1'-2"	2'-9"	2'-2"	1'-11 1/2"
PIER 17	1'-0"	1'-4"	2"	2'-4"	2"	9"	2"	5"	1'-2"	2'-9"	2'-2"	1'-11 1/2"

NOTES:
 FOR DETAILS OF FIXED BEARING AT PIER 9 SEE SHT. 12
 CAST STEEL SHALL CONFORM TO A.S.T.M. A486-65, CLASS 70, NORMALIZED.
 FORGED STEEL SHALL CONFORM TO A.S.T.M. A235-65, CLASS F.
 ALL OTHER MATERIAL SHALL CONFORM TO A.S.T.M. A36 EXCEPT AS OTHERWISE NOTED.
 STRUCTURAL STEEL WELDMENTS OF EQUAL SECTION AND STRENGTH MAY BE SUBSTITUTED FOR THE CASTINGS SUBJECT TO APPROVAL OF ENGINEER.
 CASTINGS, BEARING PLATES, LEAD PLATES, ANCHOR BOLTS AND MISCELLANEOUS ITEMS SHALL BE FABRICATED AND SET IN ACCORDANCE WITH SECTION 507 OF THE STANDARD SPECIFICATIONS AND ARE INCLUDED IN THE QUANTITY OF STRUCTURAL STEEL. PLAN WEIGHT OF BEARINGS IS 189,785 POUNDS WHICH INCLUDES 131,740 POUNDS OF CAST STEEL.



LOCATION	X		X OR Y		Y	
	10°F	50°F	30°F	50°F	70°F	90°F
N. ABUT.	1/2"	3/8"	3/16"	0"	3/8"	1/2"
PIER 2	1/2"	3/8"	3/16"	0"	3/8"	1/2"
PIER 3	1"	3/4"	3/8"	0"	3/4"	1"
PIER 4	1 1/2"	3/4"	3/8"	0"	3/4"	1 1/2"
PIER 7	1 3/4"	1 1/2"	3/8"	0"	1 1/2"	1 3/4"
PIER II-SPAN 9A	1 1/2"	1 1/2"	3/8"	0"	1 1/2"	1 3/4"
PIER II-SPAN 15	1 1/2"	3/4"	3/8"	0"	3/4"	1 1/2"
PIER 15	1 1/2"	3/4"	3/8"	0"	3/4"	1 1/2"
PIER 18	1 1/2"	3/4"	3/8"	0"	3/4"	1 1/2"
S. ABUT.	1 1/2"	3/4"	3/8"	0"	3/4"	1 1/2"



BRIDGE NO. 1
 STRUCTURE NO. 002-0022
 FOR INFORMATION ONLY

ALFRED BENESCH & COMPANY
 CONSULTING ENGINEERS
 105 WABASH AVE. CHICAGO, ILLINOIS

BEARING DETAILS - SPANS I TO 9A & 19
 F.A.I. RTE. 57 OVER THE MISSISSIPPI RIVER
 PROJECT 1-57-9(6)0
 SECTION 02-1B-11P
 ALEXANDER COUNTY, ILLINOIS
 MISSISSIPPI COUNTY, MISSOURI
 STA. 1141 + 84.75 TO STA. 1182 + 75.25