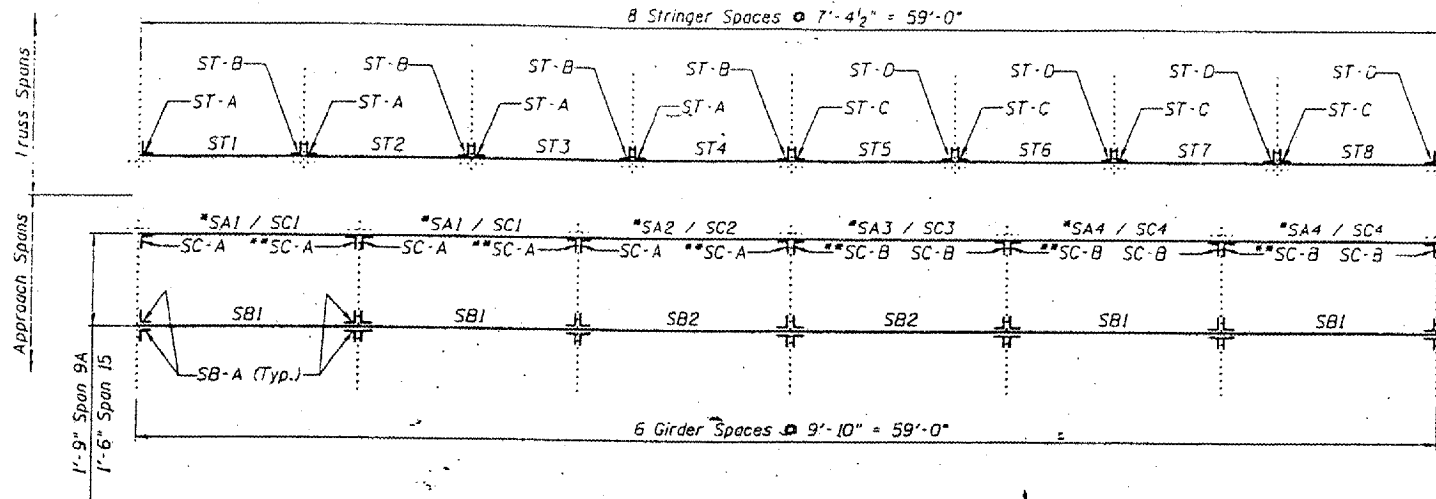


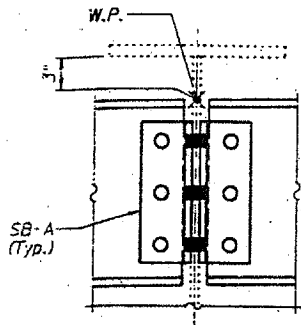
STATE OF ILLINOIS
DEPARTMENT OF TRANSPORTATION

CONTRACT: 78040
ROUTE: F.A.I. 57
SECTION: (02-1B-1)P-1
COUNTY: ALEXANDER, IL; MISSISSIPPI, MO
SHEET 60 OF 67
FOR INFORMATION ONLY

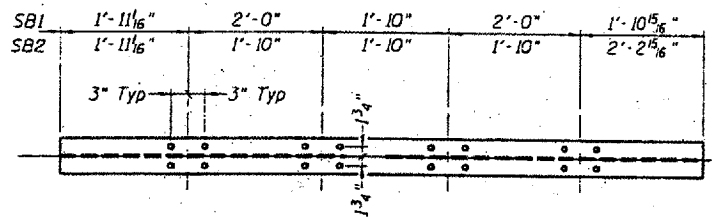


PARTIAL FRAMING PLAN AT PIERS 11 AND 14

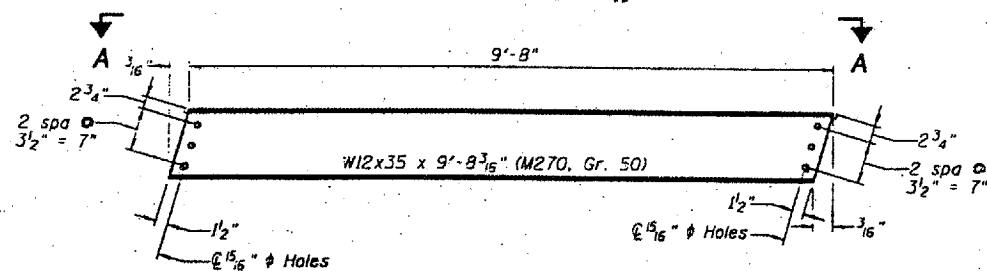
* SA# at Span 9A (no clip angles req'd), SC# at Span 15
** Inverted top for bottom from detail shown on Sheet 6B of 14.



DETAIL A

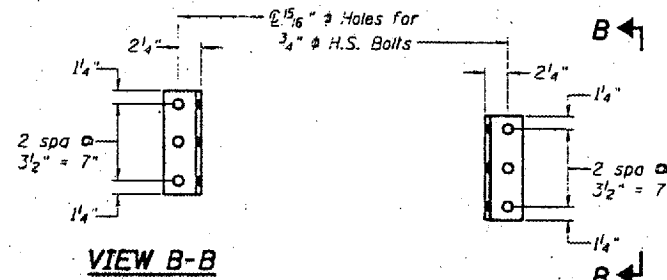


VIEW A-A



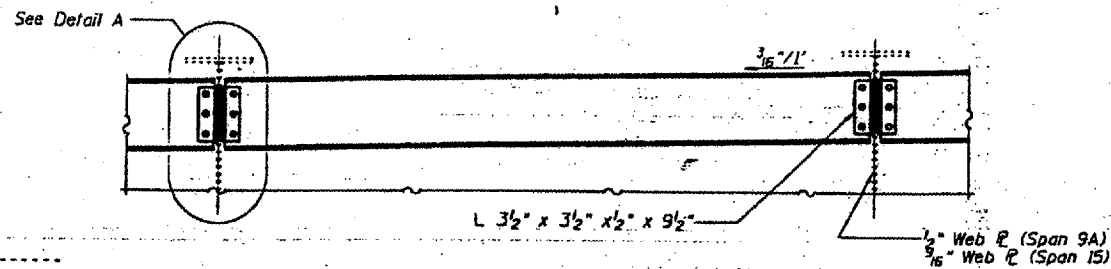
SB1 AND SB2

(SB1 8 Req'd, SB2 4 Req'd)



VIEW B-B

SB-A
(48 Req'd)



Work this sheet with Sheets 6B and 6C.

Cost of required field drilling is included with
Furnishing and Erecting Structural Steel.

Hardened washers will be required at
all oversized hole locations.

DESIGNED	P.S.J.
CHECKED	A.T.H.
DRAWN	Drew Christopher
CHECKED	A.T.H. P.S.J.

EXAMINED *John A. Morris*
ENGINEER OF STRUCTURAL SERVICES
PASSED

BACK STOOL SUPPORT - SPANS 9A AND 15

BRIDGE NO. 1
STRUCTURE NO. 002-0022
FOR INFORMATION ONLY

STOOL SUPPORT DETAILS
F.A.I. 57 OVER MISSISSIPPI RIVER
ALEXANDER COUNTY
S.N. 002-0022