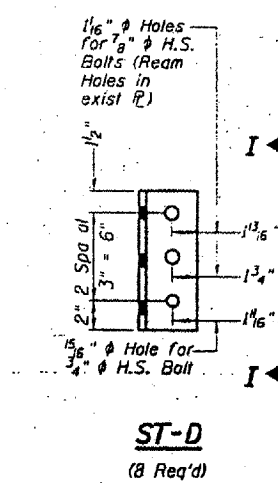
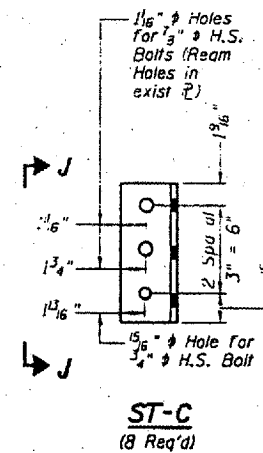
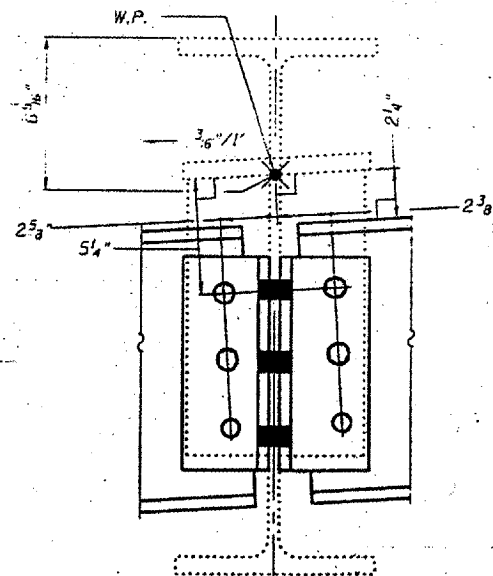
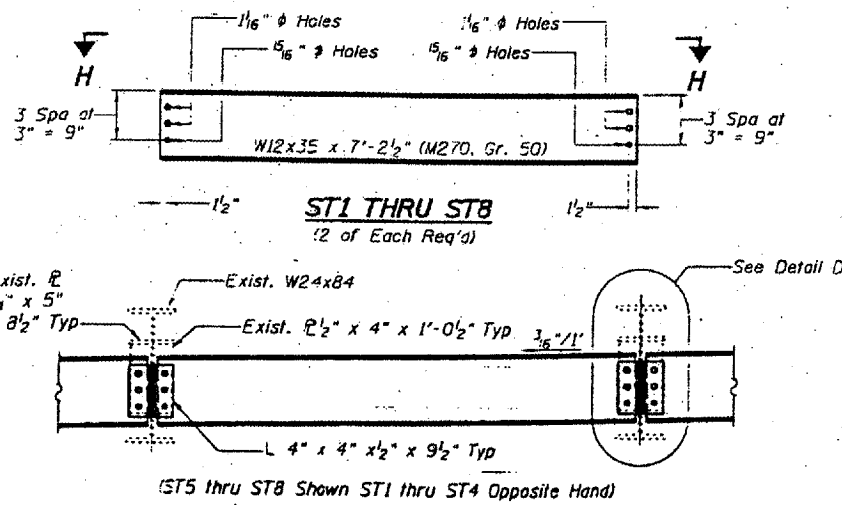
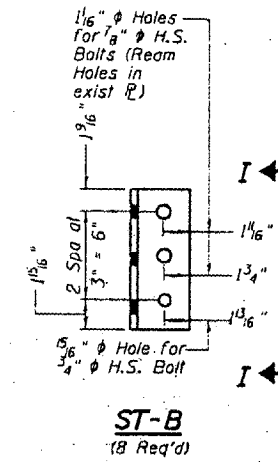
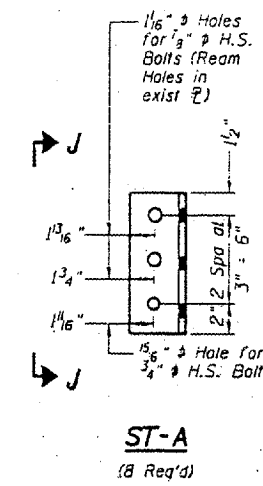
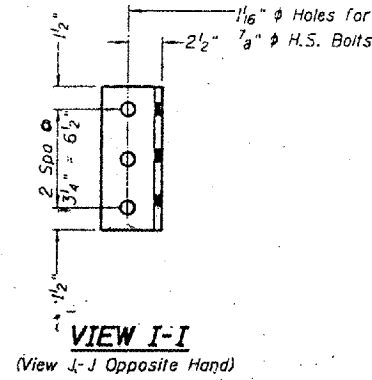
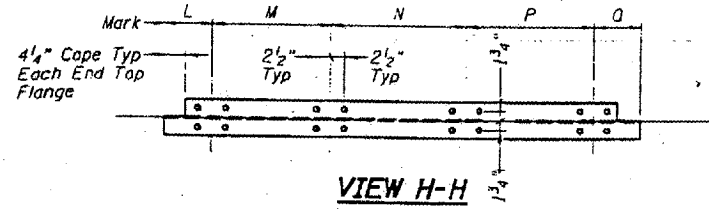


STATE OF ILLINOIS
DEPARTMENT OF TRANSPORTATION

CONTRACT: 78040
ROUTE: F.A.I. 57
SECTION: (02-1B-1)P-1
COUNTY: ALEXANDER, IL; MISSISSIPPI, MO
SHEET 62 OF 67
FOR INFORMATION ONLY

FRONT STOOL SUPPORT

Mark	L	M	N	P	Q
ST1	1'-1"	1'-5 1/4"	1'-11 1/4"	1'-5 1/4"	1'-1 3/4"
ST2	9"	1'-9 1/4"	2'-0"	1'-11 1/2"	8 3/4"
ST3	1'-1"	1'-5 1/4"	1'-11 1/4"	1'-11 1/4"	8 3/4"
ST4	1'-7 1/2"	1'-7 1/2"	1'-7 1/2"	1'-7 3/4"	8 1/2"
ST5	8 1/2"	1'-7 3/4"	1'-7 1/2"	1'-7 1/2"	1'-7 1/4"
ST6	8 3/4"	1'-11 1/4"	1'-11 1/4"	1'-6 1/4"	1'-1"
ST7	8 3/4"	1'-11 1/2"	2'-0"	1'-9 1/4"	9"
ST8	1'-1 3/4"	1'-6 1/4"	1'-11 1/4"	1'-6 1/4"	1'-1"



FRONT STOOL SUPPORT - SPANS 12 AND 14

DESIGNED P.S.J.
CHECKED A.T.H.
DRAWN Drew Christopher
CHECKED P.S.J. A.T.H.

ENGINEERED BY
John DeMorris
ENGINEER OF STRUCTURAL SERVICES
PREPARED BY
ENGINEER OF BRIDGES AND STRUCTURES

BRIDGE NO. 1
STRUCTURE NO. 002-0022
FOR INFORMATION ONLY

STOOL SUPPORT DETAILS
F.A.I. 57 OVER MISSISSIPPI RIVER
ALEXANDER COUNTY
S.N. 002-0022