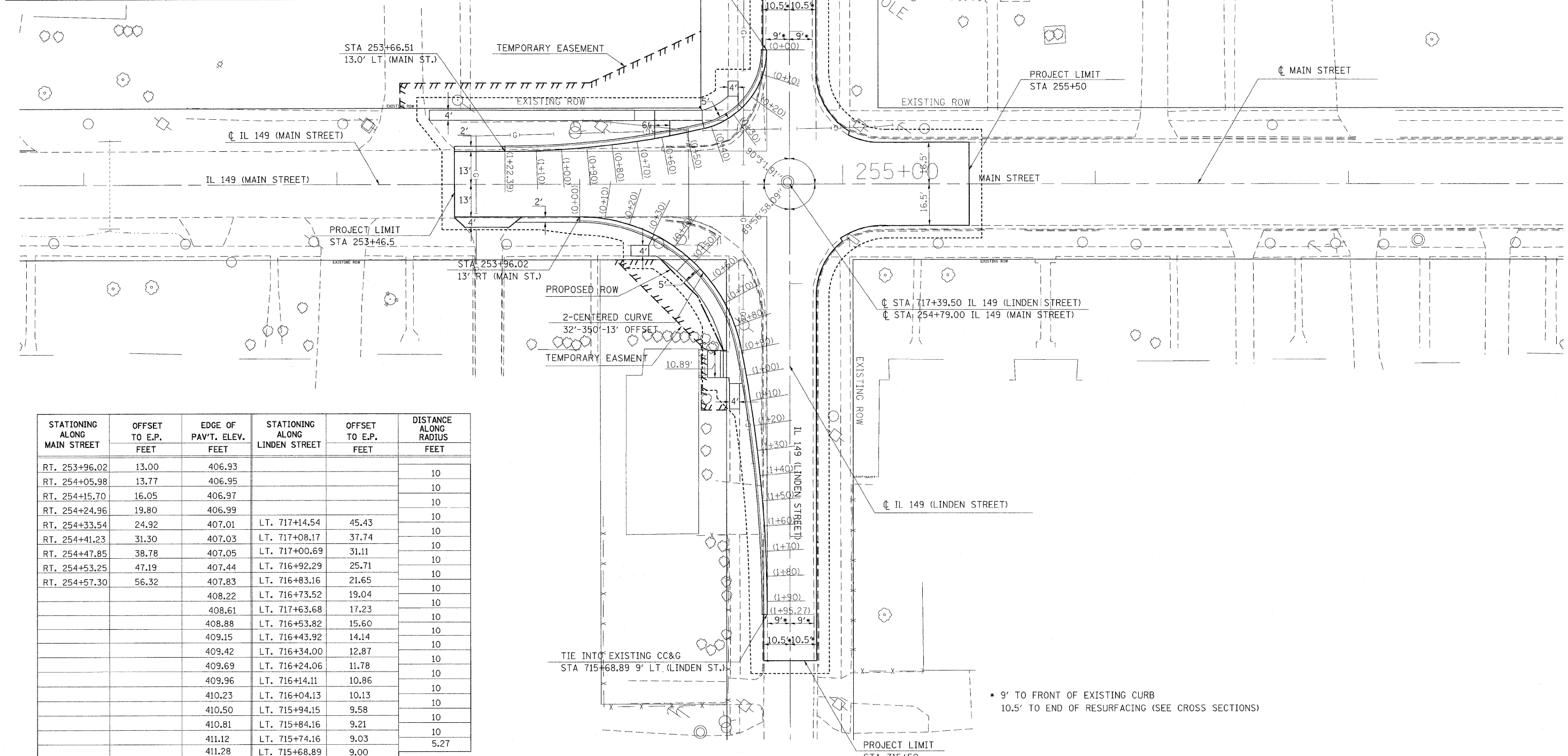


| STATIONING ALONG MAIN STREET | OFFSET TO E.P. FEET | EDGE OF PAV'T. ELEV. FEET | STATIONING ALONG LINDEN STREET | OFFSET TO E.P. FEET | DISTANCE ALONG RADIUS FEET |
|------------------------------|---------------------|---------------------------|--------------------------------|---------------------|----------------------------|
| LT. 253+66.51                | 13.00               | 406.30                    |                                |                     | 12.39                      |
| LT. 253+78.90                | 13.22               | 406.45                    |                                |                     | 10                         |
| LT. 253+88.88                | 13.72               | 406.54                    |                                |                     | 10                         |
| LT. 253+98.85                | 14.50               | 406.63                    |                                |                     | 10                         |
| LT. 254+08.80                | 15.56               | 406.72                    |                                |                     | 10                         |
| LT. 254+18.70                | 16.91               | 406.81                    |                                |                     | 10                         |
| LT. 254+28.57                | 18.55               | 406.90                    |                                |                     | 10                         |
| LT. 254+38.38                | 20.46               | 406.80                    | LT. 717+59.92                  | 40.63               | 10                         |
| LT. 254+48.11                | 22.77               | 406.70                    | LT. 717+62.25                  | 30.91               | 10                         |
| LT. 254+56.96                | 27.34               | 406.60                    | LT. 717+66.82                  | 22.06               | 10                         |
| LT. 254+63.98                | 34.40               | 406.50                    | LT. 717+73.89                  | 15.05               | 10                         |
|                              |                     | 406.40                    | LT. 717+82.78                  | 10.55               | 10                         |
|                              |                     | 406.28                    | LT. 717+92.61                  | 9.00                | 10                         |



| STATIONING ALONG MAIN STREET | OFFSET TO E.P. FEET | EDGE OF PAV'T. ELEV. FEET | STATIONING ALONG LINDEN STREET | OFFSET TO E.P. FEET | DISTANCE ALONG RADIUS FEET |
|------------------------------|---------------------|---------------------------|--------------------------------|---------------------|----------------------------|
| RT. 253+96.02                | 13.00               | 406.93                    |                                |                     | 10                         |
| RT. 254+05.98                | 13.77               | 406.95                    |                                |                     | 10                         |
| RT. 254+15.70                | 16.05               | 406.97                    |                                |                     | 10                         |
| RT. 254+24.96                | 19.80               | 406.99                    |                                |                     | 10                         |
| RT. 254+33.54                | 24.92               | 407.01                    | LT. 717+14.54                  | 45.43               | 10                         |
| RT. 254+41.23                | 31.30               | 407.03                    | LT. 717+08.17                  | 37.74               | 10                         |
| RT. 254+47.85                | 38.78               | 407.05                    | LT. 717+00.69                  | 31.11               | 10                         |
| RT. 254+53.25                | 47.19               | 407.44                    | LT. 716+92.29                  | 25.71               | 10                         |
| RT. 254+57.30                | 56.32               | 407.83                    | LT. 716+83.16                  | 21.65               | 10                         |
|                              |                     | 408.22                    | LT. 716+73.52                  | 19.04               | 10                         |
|                              |                     | 408.61                    | LT. 717+63.68                  | 17.23               | 10                         |
|                              |                     | 408.88                    | LT. 716+53.82                  | 15.60               | 10                         |
|                              |                     | 409.15                    | LT. 716+43.92                  | 14.14               | 10                         |
|                              |                     | 409.42                    | LT. 716+34.00                  | 12.87               | 10                         |
|                              |                     | 409.69                    | LT. 716+24.06                  | 11.78               | 10                         |
|                              |                     | 409.96                    | LT. 716+14.11                  | 10.86               | 10                         |
|                              |                     | 410.23                    | LT. 716+04.13                  | 10.13               | 10                         |
|                              |                     | 410.50                    | LT. 715+94.15                  | 9.58                | 10                         |
|                              |                     | 410.81                    | LT. 715+84.16                  | 9.21                | 10                         |
|                              |                     | 411.12                    | LT. 715+74.16                  | 9.03                | 10                         |
|                              |                     | 411.28                    | LT. 715+68.89                  | 9.00                | 5.27                       |

• 9' TO FRONT OF EXISTING CURB  
10.5' TO END OF RESURFACING (SEE CROSS SECTIONS)

FILE NAME =  
c:\projects\78043\78043-sht-det.dgn

USER NAME = carlsonj  
PLOT SCALE = 28.00' / IN.  
PLOT DATE = 3/5/2008

DESIGNED -  
DRAWN -  
CHECKED -  
DATE -

REVISED -  
REVISED -  
REVISED -  
REVISED -

**STATE OF ILLINOIS  
DEPARTMENT OF TRANSPORTATION**

**GEOMETRICS**

SCALE: 1"=20' SHEET NO. OF SHEETS STA. TO STA.

| F.A.P. RTE.                                   | SECTION | COUNTY   | TOTAL SHEETS | SHEET NO. |
|---|---------|----------|--------------|-----------|
| 873   | 105N    | FRANKLIN | 46           | 15        |
| CONTRACT NO. 78043                            |         |          |              |           |
| FED. ROAD DIST. NO. ILLINOIS FED. AID PROJECT |         |          |              |           |