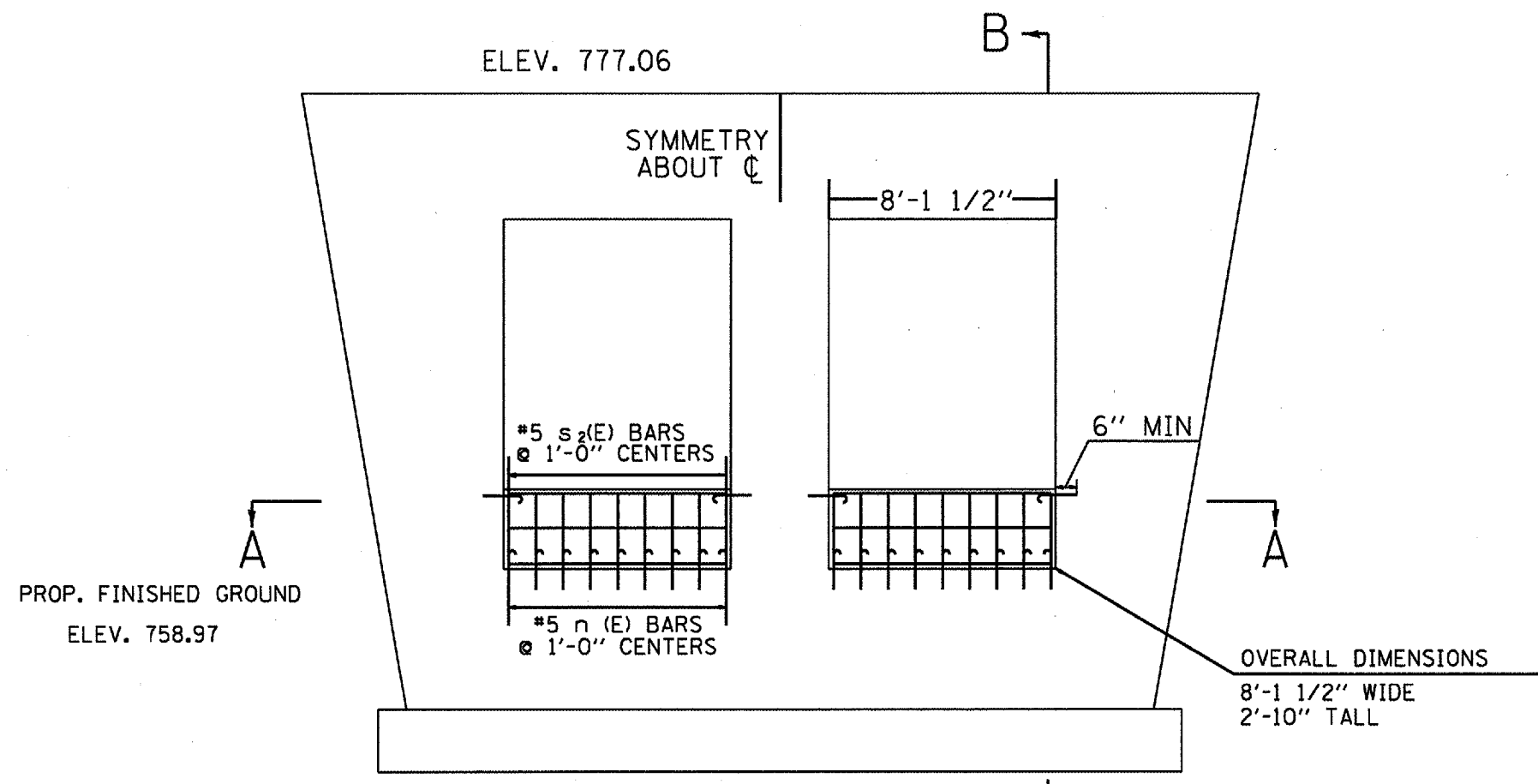


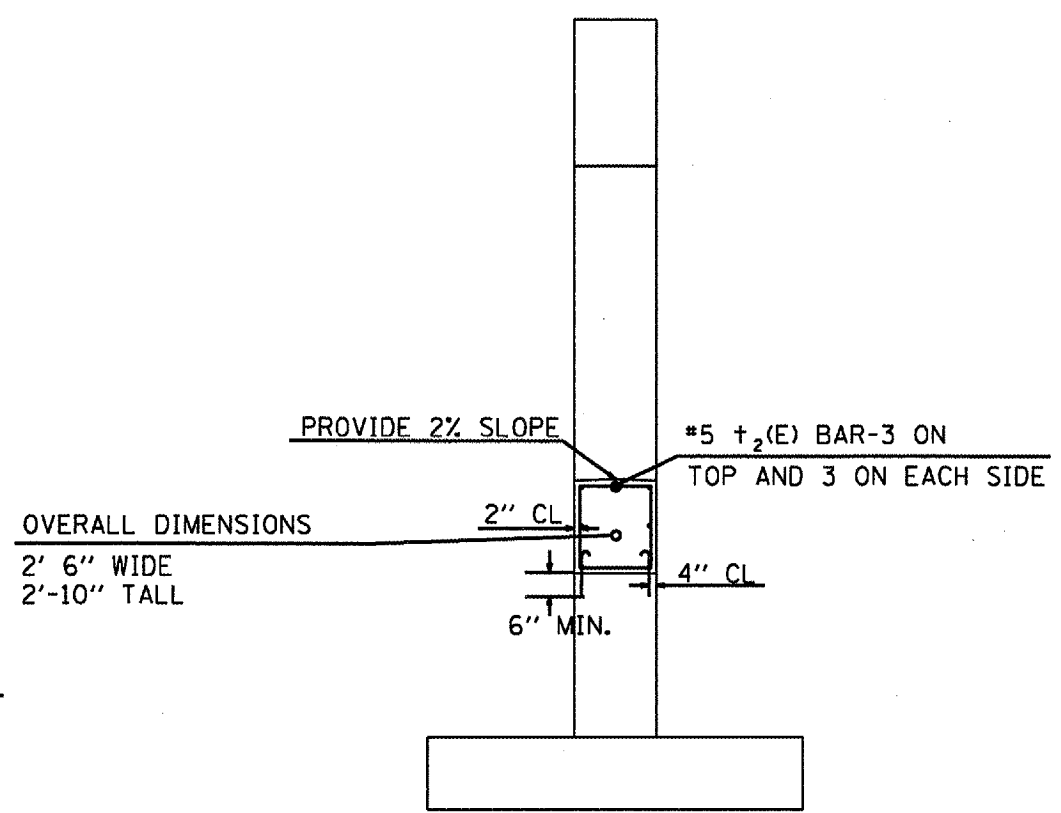
|                     |                           |         |              |           |
|---------------------|---------------------------|---------|--------------|-----------|
| F.A. RTE.           | SECTION                   | COUNTY  | TOTAL SHEETS | SHEET NO. |
| VAR.                | •                         | VARIOUS | 17           | 15        |
| STA.                | TO STA.                   |         |              |           |
| FED. ROAD DIST. NO. | ILLINOIS FED. AID PROJECT |         |              |           |

• D-9 SAFETY FY 08-2

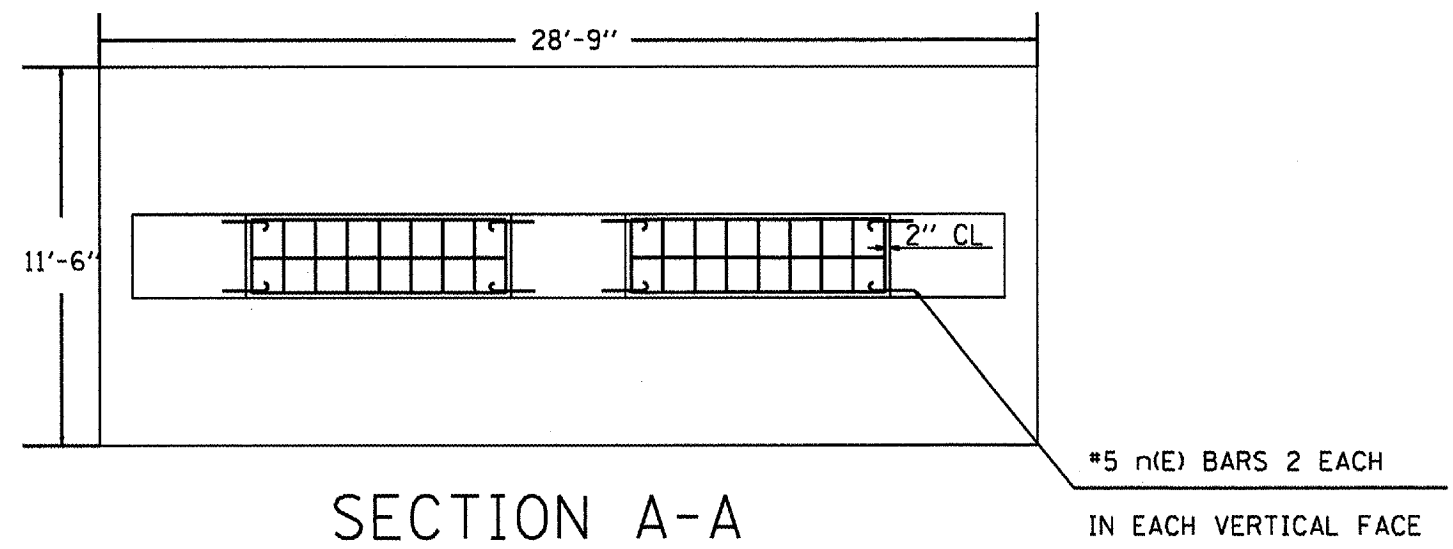
# DETAIL OF PIER IMPROVEMENTS AT SN 044-0035



ELEVATION B-B



SECTION B-B



SECTION A-A

## BILL OF MATERIALS

| BAR                              | NO. | SIZE | LENGTH | SHAPE       |
|----------------------------------|-----|------|--------|-------------|
| t <sub>2</sub>                   | 14  | #5   | 7'-10" | —           |
| n                                | 44  | #5   | 1'-5"  | —           |
| s <sub>2</sub>                   | 18  | #5   | 10'-5" | □           |
| CONCRETE STRUCTURES              |     |      |        | 4.3 CU. YD. |
| REINFORCEMENT BARS, EPOXY COATED |     |      |        | 376 LBS.    |

NOTE: ALL n(E) BARS SHALL BE EPOXY GROUTED INTO THE COLUMN AS PER ARTICLE 584 OF THE STANDARD SPECS. AT A MINIMUM DEPTH OF 6"