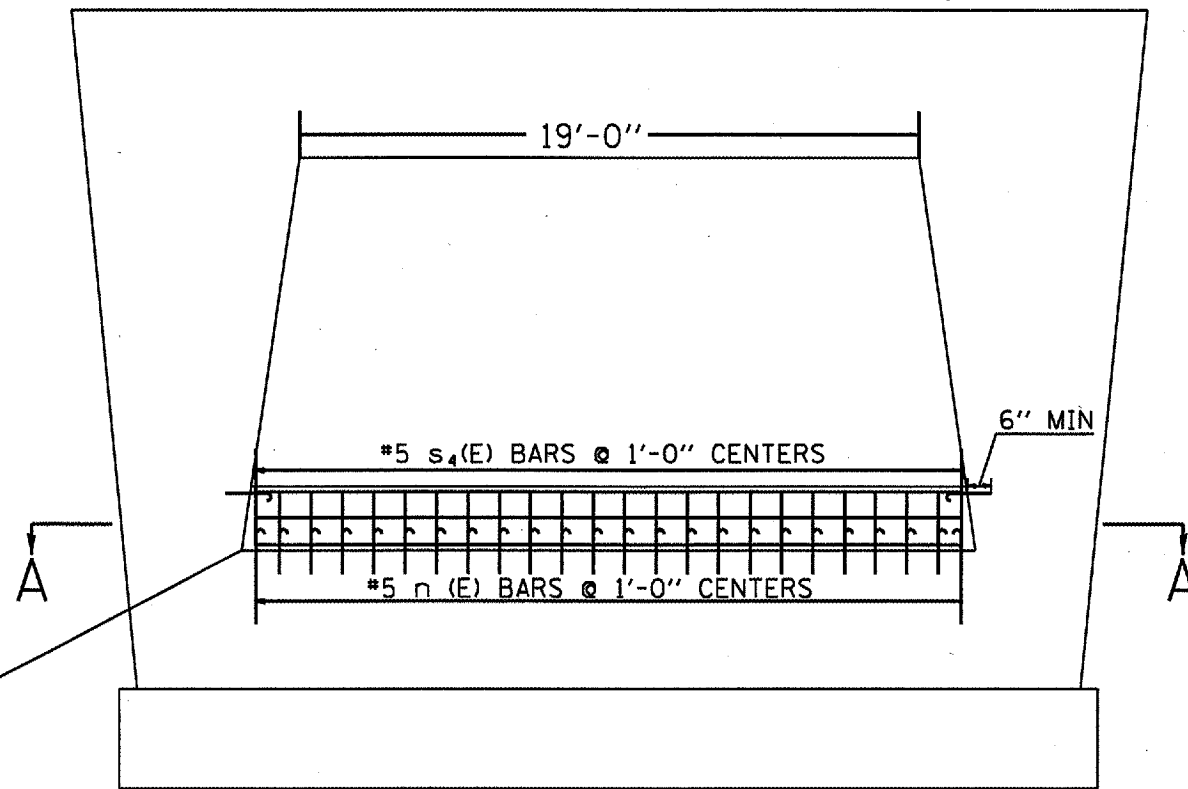


F.A. RTE.	SECTION	COUNTY	TOTAL SHEETS	SHEET NO.
VAR.		VARIOUS	17	17
STA.	TO STA.			
FED. ROAD DIST. NO.		ILLINOIS FED. AID PROJECT		
• D-9 SAFETY FY 08-2				

DETAIL OF PIER IMPROVEMENTS AT SN 064-0022

ELEV. 415.86

B



PROP. FINISHED GROUND
ELEV. 397.22

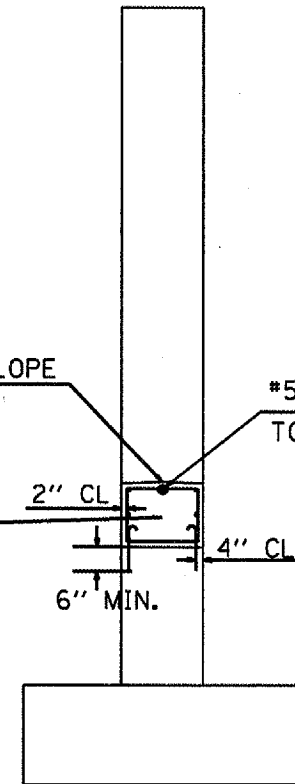
OVERALL DIMENSIONS
21'-11 3/16" WIDE AT TOP
22'-6" WIDE AT BOTTOM
1'-11 5/8" TALL

ELEVATION B

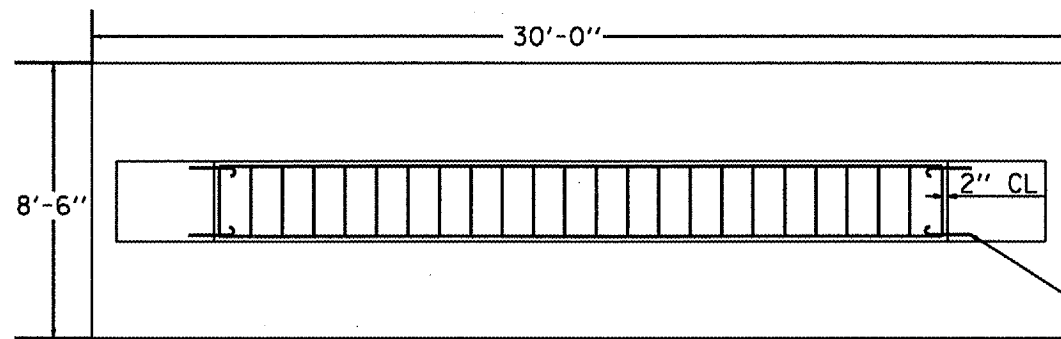
PROVIDE 2% SLOPE

OVERALL DIMENSIONS
2'-6" WIDE
1'-11 5/8" TALL

#5 +4(E) BAR-3 ON
TOP AND 3 ON EACH SIDE



SECTION B-B



SECTION A-A

#5 n(E) BARS 2 EACH
IN EACH VERTICAL FACE

BILL OF MATERIALS

BAR	NO.	SIZE	LENGTH	SHAPE
+4	7	#5	21'-8"	—
n	52	#5	1'-5"	—
s4	24	#5	8'-10"	□
CONCRETE STRUCTURES				4.1 CU. YD.
REINFORCEMENT BARS, EPOXY COATED				457 LBS.

NOTE: ALL n(E) BARS SHALL BE EPOXY GROUTED INTO THE COLUMN AS PER ARTICLE 584 OF THE STANDARD SPECS. AT A MINIMUM DEPTH OF 6"