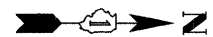
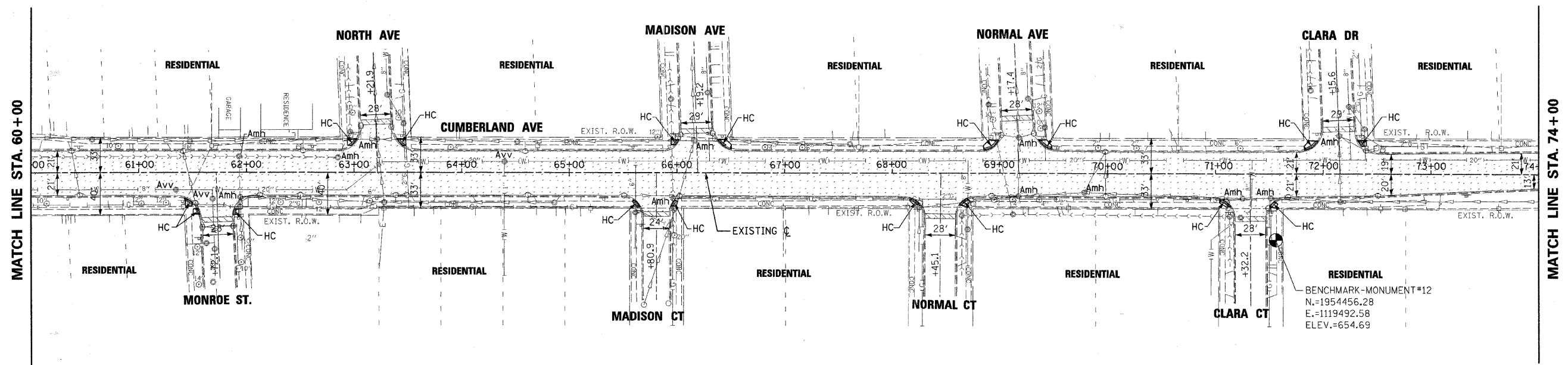


F.A.P. RTE.	SECTION	COUNTY	TOTAL SHEETS	SHEET NO.
2794	06-00109-00-WR	COOK	24	7
STA. 60+00		TO STA. 74+00		
FED. ROAD DIST. NO.	ILLINOIS	FED. AID PROJECT		

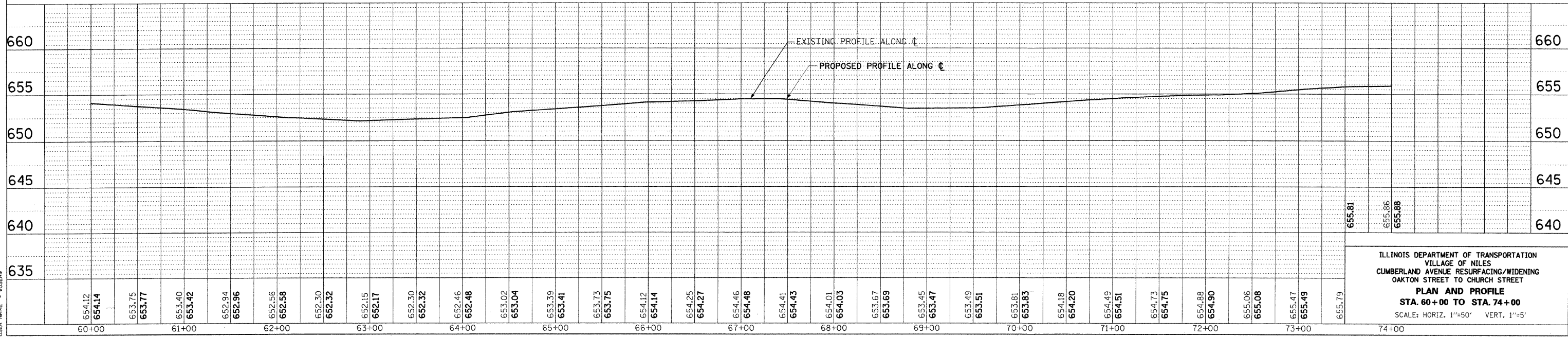


PLAN	REVISIONS	DATE
NO.	BY	
	DATE	
	BY	
	DATE	
	BY	
	DATE	

PROFILE	REVISIONS	DATE
NO.	BY	
	DATE	
	BY	
	DATE	
	BY	
	DATE	



- LEGEND**
- PROPOSED BUTT JOINT (HOT-MIX ASPHALT REMOVAL - BUTT JOINT)
  - PROPOSED PCC DRIVEWAY (DRIVEWAY PAVEMENT REMOVAL - PCC DRIVEWAY PAVEMENT, 8")
  - PROPOSED PAVEMENT RESURFACING (HOT-MIX ASPHALT SURFACE REMOVAL, 4" HOT-MIX ASPHALT SURFACE COURSE, MIX D, N70 HOT-MIX ASPHALT BINDER COURSE, IL-19, N70)
  - PROPOSED PAVEMENT WIDENING (HOT-MIX ASPHALT SURFACE COURSE, MIX D, N70 HOT-MIX ASPHALT BINDER COURSE, IL-19, N70 HOT-MIX ASPHALT BASE COURSE SUB-BASE GRANULAR MATERIAL, TYPE B COMBINATION CONC. CURB & GUTTER, TYPE B-6.12)
  - SIDEWALK REMOVAL
  - Acb CATCH BASIN TO BE ADJUSTED
  - Amh SANITARY/STORM MANHOLE TO BE ADJUSTED
  - Avv VALVE VAULT TO BE ADJUSTED
  - HC HANDICAP ACCESSIBLE RAMP WITH DETECTABLE WARNINGS



ILLINOIS DEPARTMENT OF TRANSPORTATION  
 VILLAGE OF NILES  
 CUMBERLAND AVENUE RESURFACING/WIDENING  
 OAKTON STREET TO CHURCH STREET  
**PLAN AND PROFILE**  
 STA. 60+00 TO STA. 74+00  
 SCALE: HORIZ. 1"=50' VERT. 1"=5'

PLOT DATE = 1/29/2008  
 PLOT SCALE = AS SHOWN  
 USER NAME = #USER#