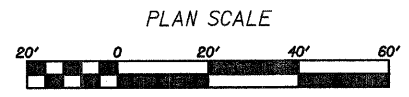
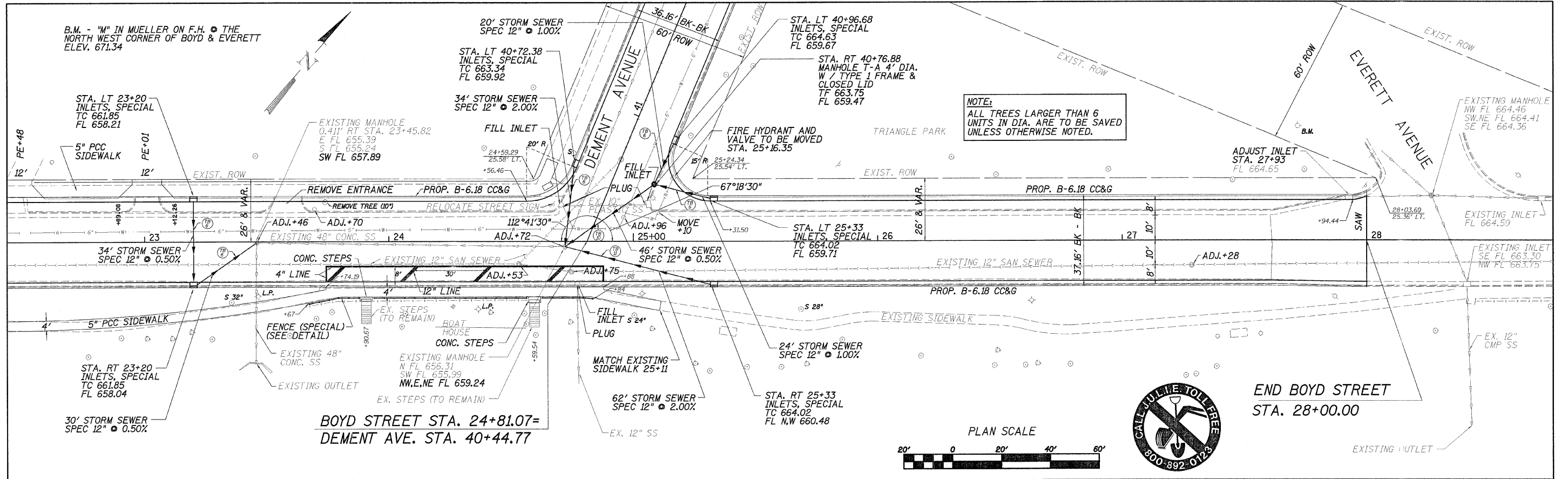


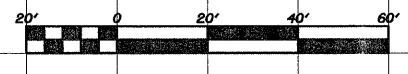
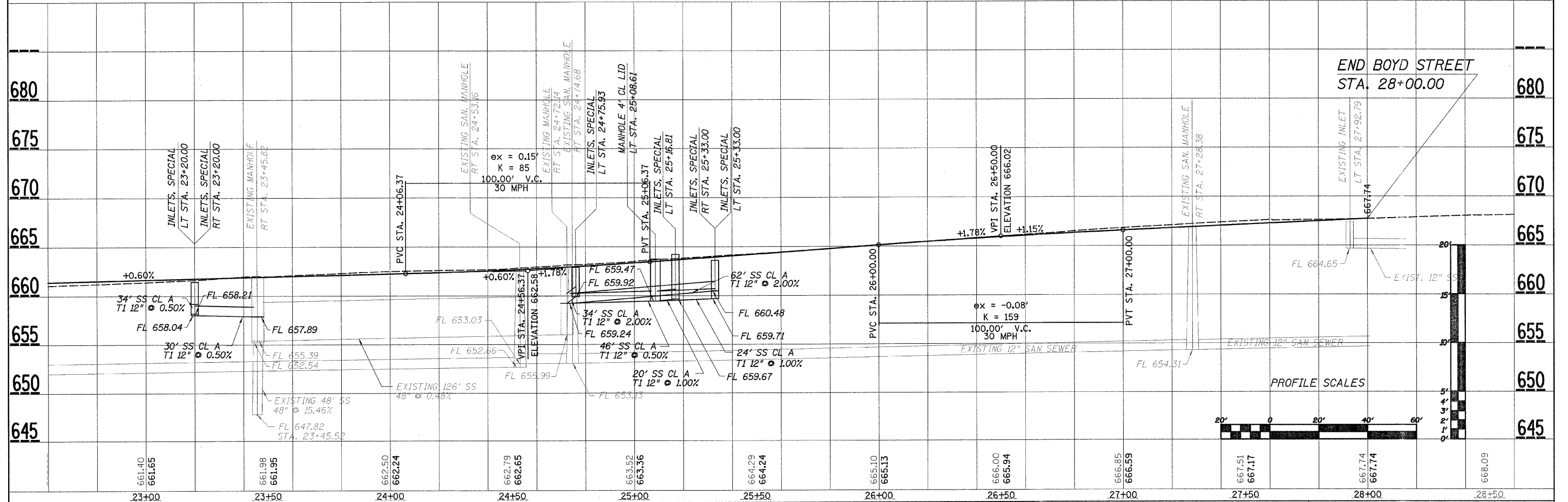
B.M. - "M" IN MUELLER ON F.H. @ THE NORTH WEST CORNER OF BOYD & EVERETT ELEV. 671.34



END BOYD STREET STA. 28+00.00

DATE	
BY	
NO.	
DATE	
BY	
NO.	
DATE	
BY	
NO.	

DATE	
BY	
NO.	
DATE	
BY	
NO.	
DATE	
BY	
NO.	



FILE NAME = S:\Trans\105007\ppBOYD1.dgn	USER NAME = USER#	DESIGNED -	REVISED -	WILLETT, HOFMANN & ASSOCIATES, INC CONSULTING ENGINEERS DIXON, IL	BOYD STREET - PLAN AND PROFILE			F.A. RTE. 5482	SECTION 07-00171-00-FP	COUNTY LEE	TOTAL SHEETS 25	SHEET NO. 10
	PLOT SCALE = #SCALE#	DRAWN -	REVISED -		SCALE: _____	SHEET NO. _____ OF _____ SHEETS	STA. 22+50 TO STA. 28+00	FED. ROAD DIST. NO. ILLINOIS FED. AID PROJECT				
	PLOT DATE = #DATE#	CHECKED -	REVISED -		CONTRACT NO. 85429							
		DATE -	REVISED -									