

STATE OF ILLINOIS
CITY OF DIXON
PLANS FOR PROPOSED
LOCAL AGENCY IMPROVEMENTS
FEDERAL-AID URBAN PROJECT
SECTION 07-00171-00-FP
BOYD STREET
F.A.U. ROUTE 5482
PROJECT M-5018 (17)
JOB NO. C-92-037-08
CONTRACT NO. 85429
2008

INDEX OF SHEETS

1	COVER SHEET AND INDEX OF SHEETS
2	SUMMARY OF QUANTITIES
3-5	TYPICAL SECTIONS
6	GENERAL NOTES AND DETAILS
7-8	SCHEDULES OF QUANTITIES
9-10	PLAN AND PROFILE - EAST BOYD ST.
11	PLAN AND PROFILE - DEMENT AVE.
12	INTERSECTION PAVEMENT ELEVATION DETAILS
13-14	STORM WATER POLLUTION PREVENTION PLAN
15-21	CROSS SECTIONS - EAST BOYD STREET
22	CROSS SECTIONS - DEMENT AVE.
23	WHA 204 CONCRETE STEPS
24	WHA 630 INLETS, SPECIAL
25	40.1 TYPICAL APPLICATION FOR ROAD CLOSURE

NAME AND ADDRESS OF UTILITIES	TYPE
COMCAST 4450 KISHWAUKEE ST. ROCKFORD, IL 61109 (815) 509-7876	CALBE TV
GALLATIN RIVER COMMUNICATIONS 207 W. SECOND STREET DIXON, IL 61021 (815) 288-9981	TELEPHONE
COMED 123 ENERGY AVENUE ROCKFORD, IL 61109 (800) 334-7661 (815) 490-2320	ELECTRIC
NICOR GAS 4651 LINDEN ROAD ROCKFORD, IL 61109 (815) 965-5416	GAS
CITY OF DIXON WATER DEPT. 121 WEST SECOND STREET DIXON, IL 61021 (815) 288-3381	SEWER/WATER

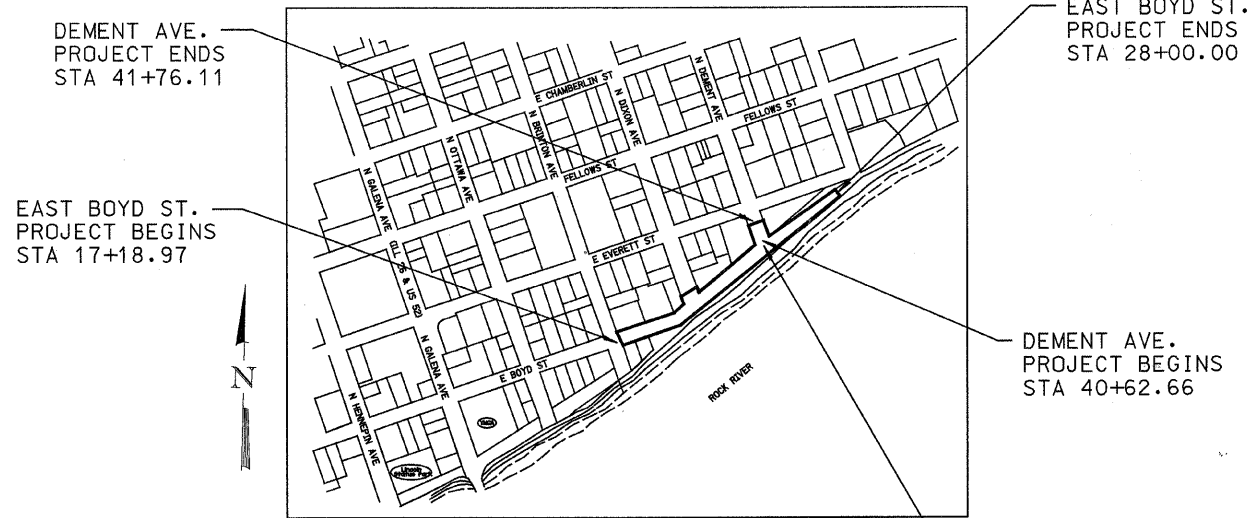
STANDARDS

280001-04	TEMPORARY EROSION CONTROL SYSTEMS
424001-05	CURB RAMPS FOR SIDEWALKS
602401-01	MANHOLE TYPE A
602701-01	MANHOLE STEPS
604001-02	FRAME AND LIDS TYPE 1
606001-03	CONCRETE CURB TYPE B AND COMBINATION CONCRETE CURB AND GUTTER
664001-01	CHAIN LINK FENCE
665001-01	WOVEN WIRE FENCE
701006-02	OFF-ROAD OPERATIONS, 2L, 2W, 15' TO 24" FROM PAVEMENT EDGE
701301-02	LANE CLOSURE, 2L, 2W, SHORT TIME OPERATIONS
701501-04	URBAN LANE CLOSURE, 2L, 2W, UNDIVIDED
701801-03	LANE CLOSURE MULTILANE 1W OR 2W CROSSWALK OR SIDEWALK CLOSURE
701901	TRAFFIC CONTROL DEVICES
720011	METAL POSTS FOR SIGNS, MARKERS, & DELINEATORS
728001	TELESCOPING STEEL SIGN SUPPORT
729001	APPLICATIONS OF TYPES A & B METAL (FOR SIGNS & MARKERS)

DESIGN CRITERIA

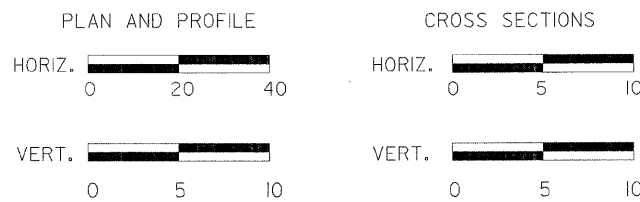
DESIGN SPEED: 30 MPH - EAST BOYD STREET			
FUNCTIONAL CLASSIFICATION	HIGHWAY	ADT (2028)	% TRUCKS
URBAN COLLECTOR ST.	EAST BOYD STREET	500	5

LOCATION MAP



NET LENGTH = 1,194.48 FEET = 0.23 MILES

SCALES:



CITY OF DIXON	
APPROVED	<u>1/30/08</u> DATE <u>J. A. Burke</u> LOCAL AGENCY, POSITION
PASSED	<u>February 26, 2008</u> DATE <u>John F. John</u> DISTRICT & ENGINEER OF LOCAL ROADS & STREETS
RELEASING FOR BID BASED ON LIMITED REVIEW	<u>February 26, 2008</u> DATE <u>Alena G. Pagan</u> DEPUTY DIRECTOR OF HIGHWAYS, REGION 2 ENGINEER



S:/TRANS/1050D07/COVERETC.DGN

FILE NAME	USER NAME = #USER#	DESIGNED -	REVISED -	WILLETT, HOFMANN & ASSOCIATES, INC CONSULTING ENGINEERS DIXON, IL	BOYD STREET	F.A. RTE.	SECTION	COUNTY	TOTAL SHEETS	SHEET NO.	
#FILE#	PLOT SCALE = #SCALE#	DRAWN -	REVISED -			5482	07-00171-00-FP	LEE	25	1	
	PLOT DATE = #DATE#	CHECKED -	REVISED -			CITY OF DIXON		CONTRACT NO. 85429			
		DATE	REVISED			FED. ROAD DIST. NO. ILLINOIS FED. AID PROJECT					

DATE	
BY	
REVISION	
PLANNED	
ALIGNED	
CHECKED	
ADDED FILE NAME	
NO.	
PLAN	
NOTE BOOK	
NO.	

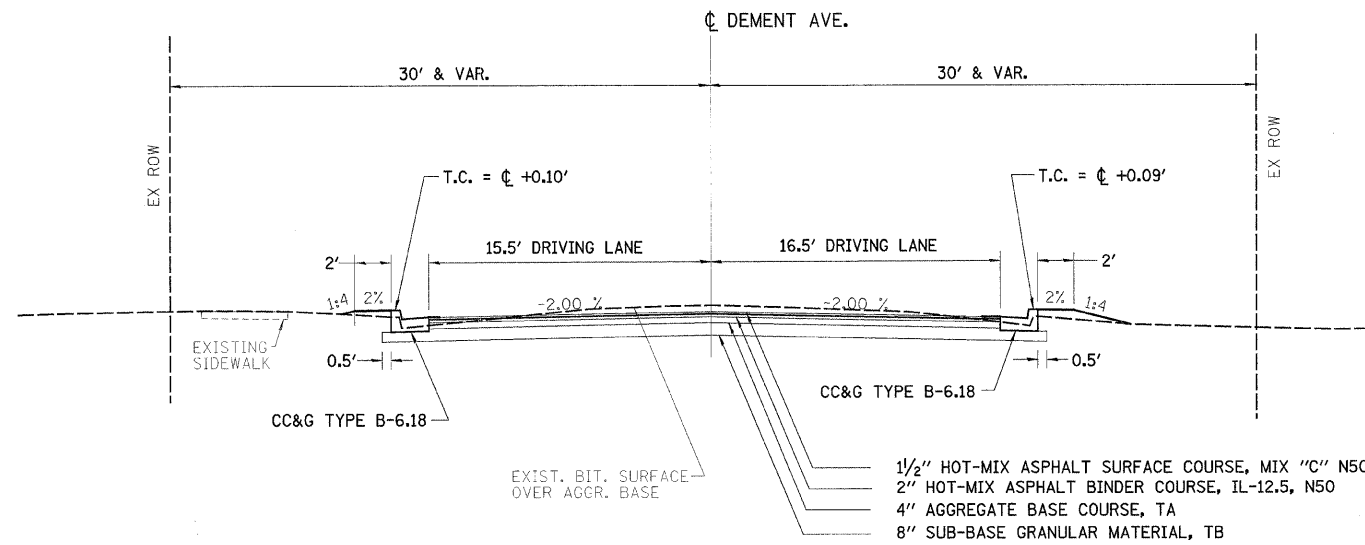
DATE	
BY	
REVISION	
PLANNED	
GRADES CHECKED	
STRUCTURE NOTATIONS CHECKED	
NO.	
PROFILE	
NOTE BOOK	
NO.	

TYPICAL SECTIONS

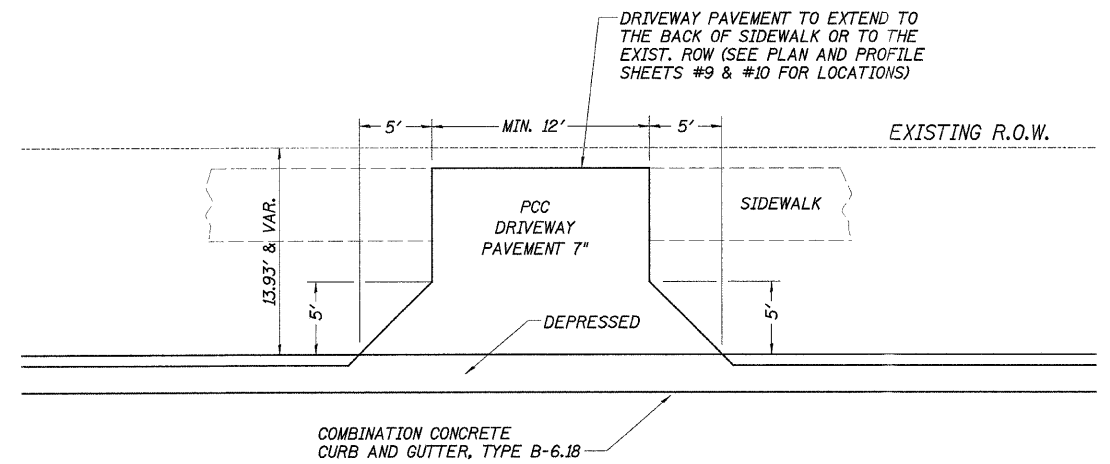
DEMENT AVENUE

PLAN	SURVEYED	DATE
NOTE BOOK NO.	BY	
	CHECKED	
	DATE	

PROFILE	SURVEYED	DATE
NOTE BOOK NO.	BY	
	CHECKED	
	DATE	



STA. 40+70.19 TO STA. 41+76.11
BOYD ST. TO EVERETT AVE



TYPICAL ENTRANCE - BOYD ST. & DEMENT AVE.

S:\Trans\1050D07\typicals.dgn

FILE NAME =	USER NAME = #USER#	DESIGNED -	REVISED -	WILLETT, HOFMANN & ASSOCIATES, INC. CONSULTING ENGINEERS DIXON, IL	TYPICAL SECTIONS			F.A. RTE.	SECTION	COUNTY	TOTAL SHEETS	SHEET NO.
#FILE.#	PLOT SCALE = #SCALE#	DRAWN -	REVISED -					5482	07-00171-00-FP	LEE	25	5
	PLOT DATE = #DATE#	CHECKED -	REVISED -		CONTRACT NO. 85429							
		DATE -	REVISED -		FED. ROAD DIST. NO. [ILLINOIS] FED. AID PROJECT							

GENERAL NOTES AND DETAILS

GENERAL NOTES

THE CONTRACTOR SHALL CAREFULLY PRESERVE ALL PROPERTY MARKS, SECTION OR SUBSECTION MONUMENTS ENCOUNTERED, UNTIL AN OWNER OR AUTHORIZED SURVEYOR OR AGENT HAS WITNESSED OR OTHERWISE REFERENCED THEIR LOCATION. ANY PROPERTY MARKS, SECTION OR SUBSECTION MONUMENTS UNLESS REFERENCED, DAMAGED BY THE CONTRACTOR SHALL BE REPLACED AT THE EXPENSE OF THE CONTRACTOR.

THE CONTRACTOR SHALL REMOVE ALL STRUCTURES WITHIN THE EXISTING RIGHT OF WAY AS DIRECTED BY THE ENGINEER AND AS SHOWN ON THE PLANS. NO ADDITIONAL COMPENSATION WILL BE ALLOWED.

ALL TELEPHONE AND ELECTRIC POLES, GAS PIPES, ETC. IN THE WAY OF THE IMPROVEMENT SHALL BE MOVED BY THE UTILITIES PRIOR TO CONSTRUCTION AND SHALL NOT BE INCLUDED IN THE CONTRACT. THE CONTRACTOR SHALL NOTIFY THE RESPECTIVE UTILITIES TO MAKE THE NECESSARY ADJUSTMENTS PRIOR TO THIS CONSTRUCTION.

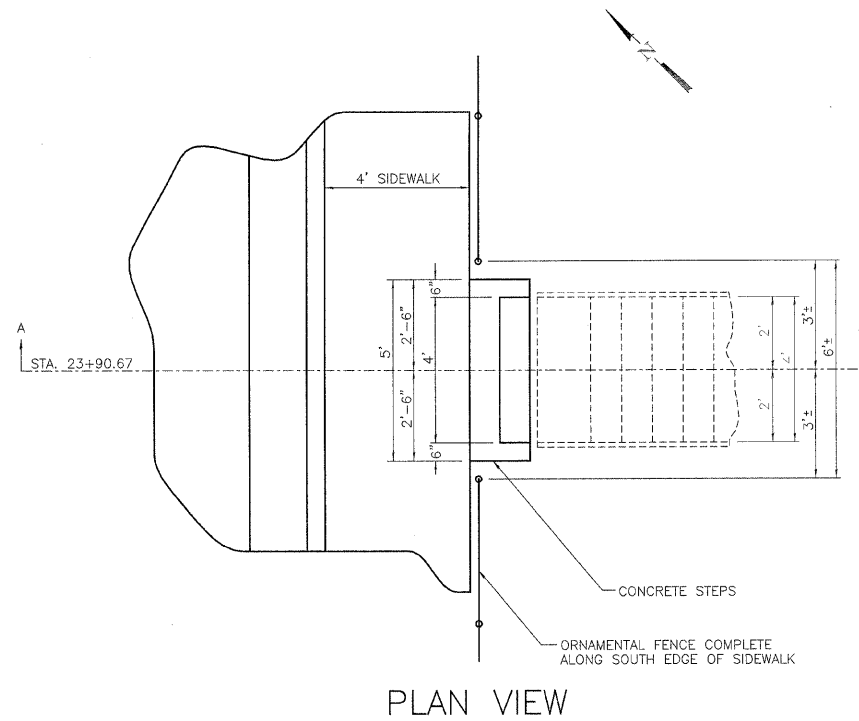
THE LOCATION AND ELEVATION OF THE VARIOUS UNDERGROUND UTILITIES AS SHOWN ON THE PLANS ARE NOT TO BE TAKEN AS EXACT. THE CONTRACTOR SHALL USE SPECIAL CARE WHEN CONDUCTING CONSTRUCTION OPERATIONS NEAR THEM TO PREVENT DAMAGE.

THE FINAL TOP 4" OF SOIL IN ANY AREA DISTURBED BY THE CONTRACTOR MUST BE ABLE TO SUPPORT VEGETATION.

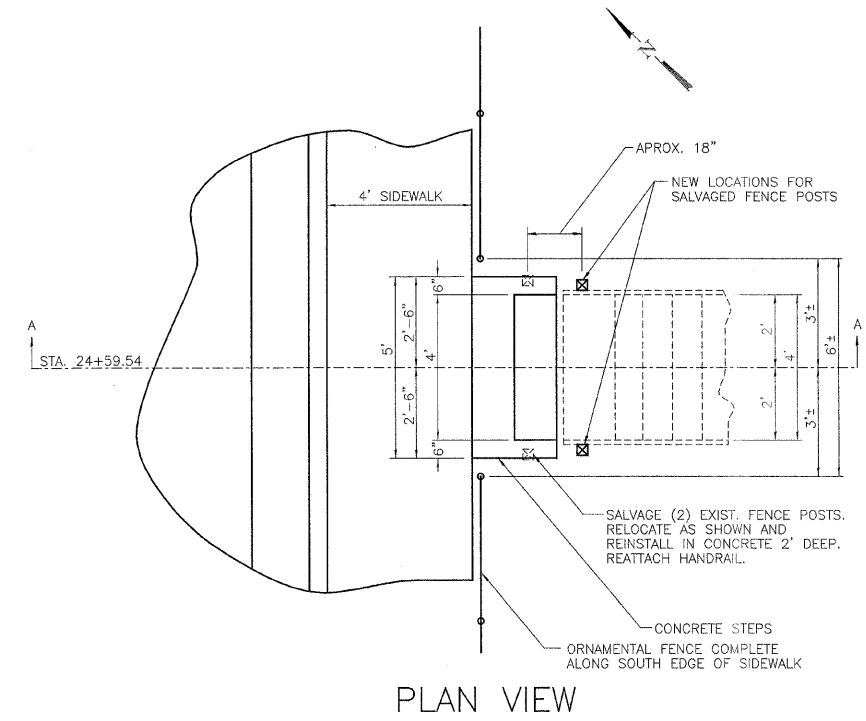
EXISTING STREET SIGNS AND TRAFFIC SIGNS THAT ARE WITHIN THE CONSTRUCTION LIMITS SHALL BE REMOVED AND RESET BY THE CONTRACTOR. COST OF REMOVING AND RESETTING SHALL BE INCIDENTAL TO EARTH EXCAVATION (SPECIAL).

WHERE THE PROPOSED CONSTRUCTION MEETS AN EXISTING BITUMINOUS SURFACE, OR WHERE SAWING IS STATED ON THE PLANS, THE EXISTING SURFACE SHALL BE SAWED IN A NEAT, STRAIGHT LINE. COST OF SAWING TO BE INCLUDED IN THE CONTRACT UNIT PRICE PER UNIT OF EARTH EXCAVATION (SPECIAL).

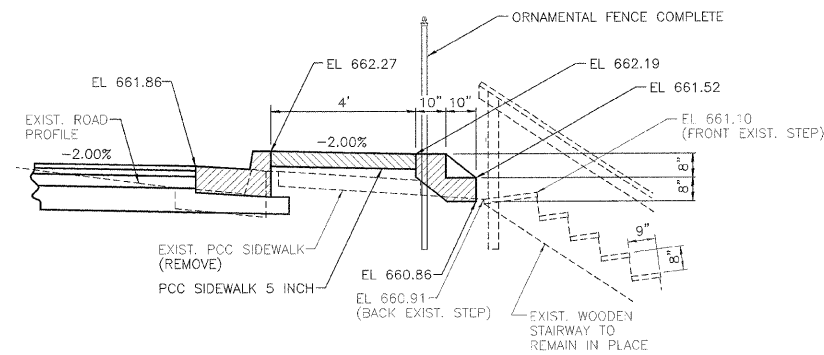
ANY TEMPORARY SEEDING THAT IS NECESSARY AS DIRECTED BY THE ENGINEER, SHALL BE PAID AS SEEDING, CLASS 7



PLAN VIEW

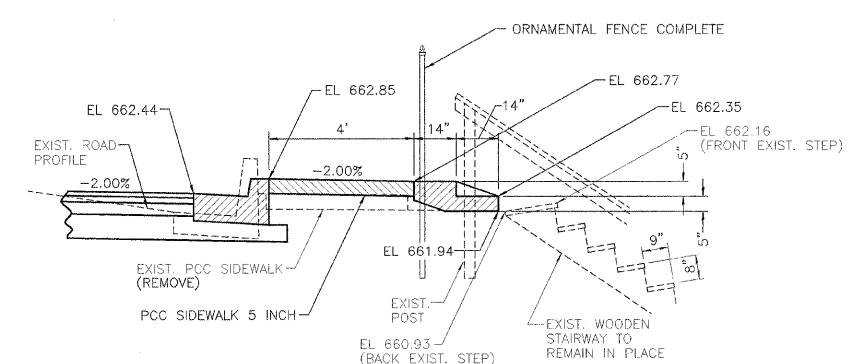


PLAN VIEW



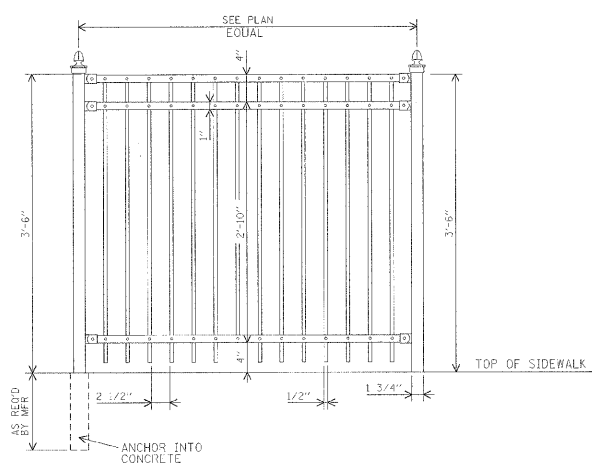
SECTION A-A

STA. RT. 23+90.67 STAIRS DETAIL



SECTION A-A

STA. RT. 24+59.54 STAIRS DETAIL



ORNAMENTAL FENCE COMPLETE
STA. 23+66 TO STA. 24+82

DIXON - BOYD STREET - HORIZONTAL CONTROL POINTS					
POINT #	STATION	O/S	NORTH	EAST	DESCRIPTION
151	17+27.34	-17.47	1887946.54	2483193.01	PK NAIL
X2886	23+35.23	-15.24	1888244.74	2483702.71	NAIL
3357	26+04.23	22.94	1888392.56	2483930.68	NAIL

DIXON - BOYD STREET - VERTICAL BENCH MARKS					
STATION	O/S	ROAD	ELEV.	DESCRIPTION	
16+72.93	25.59	BOYD	662.41	"M" IN MUELLER @ S/W COR. OF BOYD ST. & BRINTON AVE.	
20+84.90	-48.22	BOYD	662.4	"O" IN OPEN @ N/W COR. OF BOYD ST. & DIXON AVE.	
27+71.73	-46.53	BOYD	671.34	"M" IN MUELLER @ N/W COR. OF BOYD ST. & EVERETT ST.	

DATE	BY	REVISION

DATE	BY	REVISION

S:/TRANS/1050D07/COVERETC.DGN

FILE NAME =	USER NAME = \$USER\$	DESIGNED -	REVISED -	WILLETT, HOFMANN & ASSOCIATES, INC CONSULTING ENGINEERS DIXON, IL	GENERAL NOTES AND DETAILS	F.A. RTE.	SECTION	COUNTY	TOTAL SHEETS	SHEET NO.	
\$FILE\$	PLT SCALE = \$SCALE\$	DRAWN -	REVISED -			5482	07-00171-00-FP	LEE	23	6	
PLT DATE = \$DATE\$	PLT DATE = \$DATE\$	CHECKED -	REVISED -			CONTRACT NO. 85429		FED. ROAD DIST. NO. [ILLINOIS] FED. AID PROJECT			
		DATE -	REVISED -			SCALE: _____	SHEET NO. _____ OF _____ SHEETS	STA. _____ TO STA. _____			

SCHEDULES

PLAN: SURVEYED BY: DATE: _____
 PLOTTED & CHECKED: _____
 NOTE BOOK NO. OF ANY CHECKED: _____
 INC. CAD FILE NAME: _____

DETECTABLE WARNINGS		
STATION	SQ FT	REMARKS
BOYD ST.		
17+31	8	2"X4'
17+40	8	2"X4'
20+74	8	2"X4'
21+24	8	2"X4'
24+65	8	2"X4'
PROJECT TOTAL		40

MANHOLES TO BE ADJUSTED		
STATION	EACH	REMARKS
BOYD ST.		
17+27	1	
17+40	1	
20+26	1	
20+92	1	
23+46	1	
24+53	1	
24+72	1	
24+75	1	
27+28	1	
DEMENT AVE.		
40+81	1	
PROJECT TOTAL		10

COMBINATION CONCRETE CURB & GUTTER, TYPE B - 6.18		
STATION	FOOT	REMARKS
BOYD ST.		
NORTH BRINTON - DIXON	426	
NORTH DIXON - DEMENT	512	
NORTH DEMENT - EVERETT	382	
SOUTH BRINTON - EVERETT	1,101	
PROJECT TOTAL		2,421

PAINT PAVEMENT MARKING LINE 4"		
STATION	FOOT	REMARKS
BOYD ST.		
LT 21+18 - 22+34.88	130	WHITE LINE
RT 23+74.19 - 24+88	126	WHITE LINE
PROJECT TOTAL		256

FIRE HYDRANT AND VALVE TO BE MOVED		
STATION	EACH	REMARKS
BOYD STREET		
LT 25+16.35 / LT 25+10	1	
PROJECT TOTAL		1

INLETS TO BE ADJUSTED		
STATION	EACH	REMARKS
BOYD ST.		
17+57.35	1	
27+93	1	
PROJECT TOTAL		2

STORM SEWERS, SPECIAL 12"		
STATION	FOOT	REMARKS
BOYD ST.		
LT 19+00 - RT 19+00	30	
RT 19+00 - RT 20+13	114	
LT 20+13 - RT 20+13	28	
LT 20+80.50 - LT 20+92.02	26	
LT 21+20.50 - LT 21+36.53	28	
LT 21+36.53 - LT 20+92.02	46	
LT 23+20 - RT 23+20	34	
RT 23+20 - RT 23+45.82	30	
LT 40+72.38 - RT 24+72.14	34	
LT 40+96.68 - LT 40+76.88	20	
LT 25+33 - LT 40+76.88	24	
LT 40+76.88 - RT 24+72.14	46	
RT 25+33 - RT 24+72.14	62	
PROJECT TOTAL		522

PAINT PAVEMENT MARKING LINE 12"		
STATION	FOOT	REMARKS
BOYD ST.		
LT 21+36 - 22+02	13	WHITE LINE DIAGONALS
RT 23+74.19 - 24+88	35	WHITE LINE DIAGONALS
PROJECT TOTAL		48

MANHOLES, TYPE A, 4' - DIAMETER, TYPE 1 FRAME, CLOSED LID		
STATION	EACH	REMARKS
BOYD ST.		
RT 40+76.88	1	
PROJECT TOTAL		1

VALVE BOXES TO BE ADJUSTED		
STATION	EACH	REMARKS
BOYD ST.		
17+31	1	Water
17+42.50	1	Water
21+20	1	Water
23+70	1	Water
24+96	1	Water
PROJECT TOTAL		5

STORM SEWERS, SPECIAL 15"		
STATION	FOOT	REMARKS
BOYD ST.		
RT 20+13 - LT 20+92.02	84	
PROJECT TOTAL		84

PAINT PAVEMENT MARKING LINE 24"		
STATION	FOOT	REMARKS
BOYD ST.		
LT 17+52	41	STOP BAR
PROJECT TOTAL		41

INLETS, SPECIAL		
STATION	EACH	REMARKS
BOYD ST.		
LT 19+00	1	
RT 19+00	1	
LT 20+34	1	
RT 20+34	1	
LT 20+80.50	1	
LT 21+20.50	1	
LT 21+36.53	1	
LT 23+20	1	
RT 23+20	1	
LT 25+33	1	
RT 25+33	1	
DEMENT AVE.		
LT 40+72.38	1	
RT 40+76.88	1	
PROJECT TOTAL		13

FILLING INLETS		
STATION	EACH	REMARKS
BOYD ST.		
RT 17+43	1	
LT 20+74	1	
RT 20+82	1	
LT 21+12	1	
RT 21+96	1	
LT 24+71	1	
RT 24+77	1	
LT 25+06	1	
PROJECT TOTAL		8

SIGN PANEL - TYPE 1		
STATION	SQ FT	REMARKS
BOYD ST.		
RT 16+69	0.50	4-WAY SIGN
LT 16+86	0.50	4-WAY SIGN
RT 17+24	0.50	4-WAY SIGN
RT 17+25	6.25	30" STOP SIGN
LT 17+49	0.50	4-WAY SIGN
LT 20+80.50	6.25	30" STOP SIGN
DEMENT ST.		
LT 40+81	6.25	30" STOP SIGN
PROJECT TOTAL		21

ORNAMENTAL FENCE COMPLETE		
STATION	FOOT	REMARKS
BOYD ST.		
RT 23+66 - 24+82	108	
PROJECT TOTAL		108

BREAKER-RUN CRUSHED STONE		
STATION	TON	REMARKS
BOYD STREET		
CONTINGENCY ITEM	506	AS DIRECTED BY THE ENGINEER
PROJECT TOTAL		506

METAL POST - TYPE A		
STATION	SQ FT	REMARKS
BOYD ST.		
RT 17+25	12	
LT 20+80.50	12	
DEMENT ST.		
LT 40+81	12	
PROJECT TOTAL		36

CONCRETE STEPS		
STATION	CU YD	REMARKS
BOYD STREET		
RT 20+39	0.44	4' WIDE
RT 23+90.67	0.26	4' WIDE
RT 24+59.54	0.26	4' WIDE
PROJECT TOTAL		0.96

PROFILE: SURVEYED BY: DATE: _____
 PLOTTED & CHECKED: _____
 NOTE BOOK NO. OF ANY CHECKED: _____
 INC. CAD FILE NAME: _____

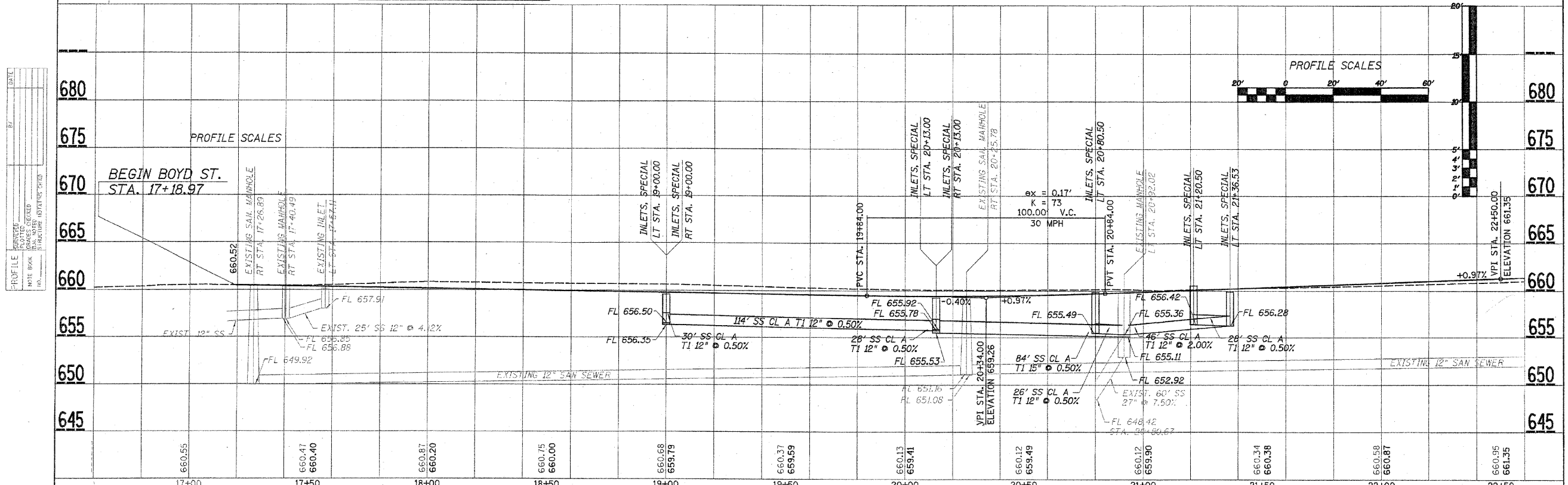
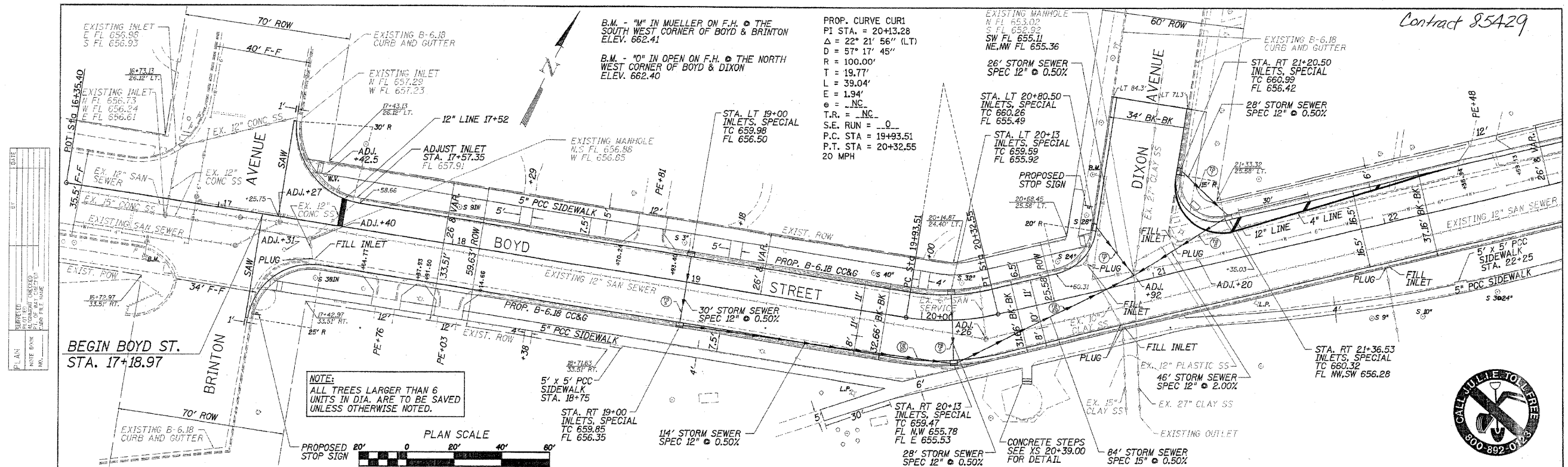
S:/TRANS/105007/COVERETC.DGN

FILE NAME = #FILE#	USER NAME = #USER#	DESIGNED - ___	REVISED - ___
		DRAWN - ___	REVISED - ___
		CHECKED - ___	REVISED - ___
		DATE - ___	REVISED - ___

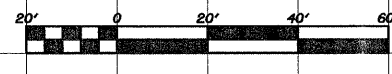
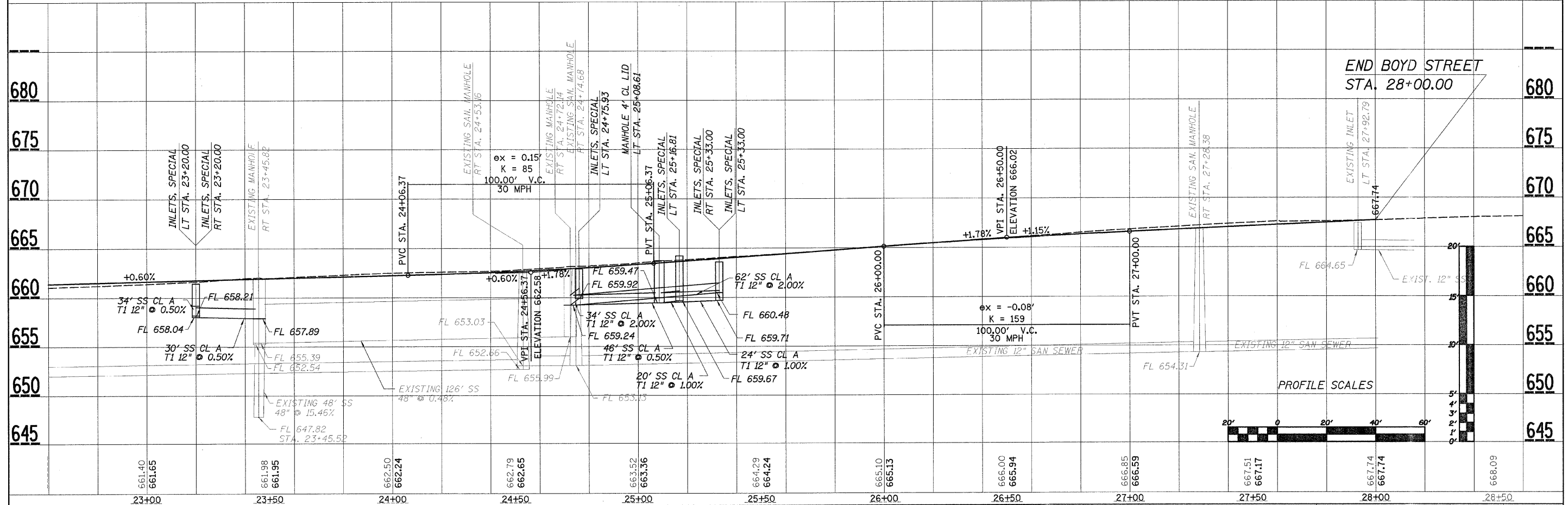
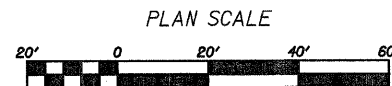
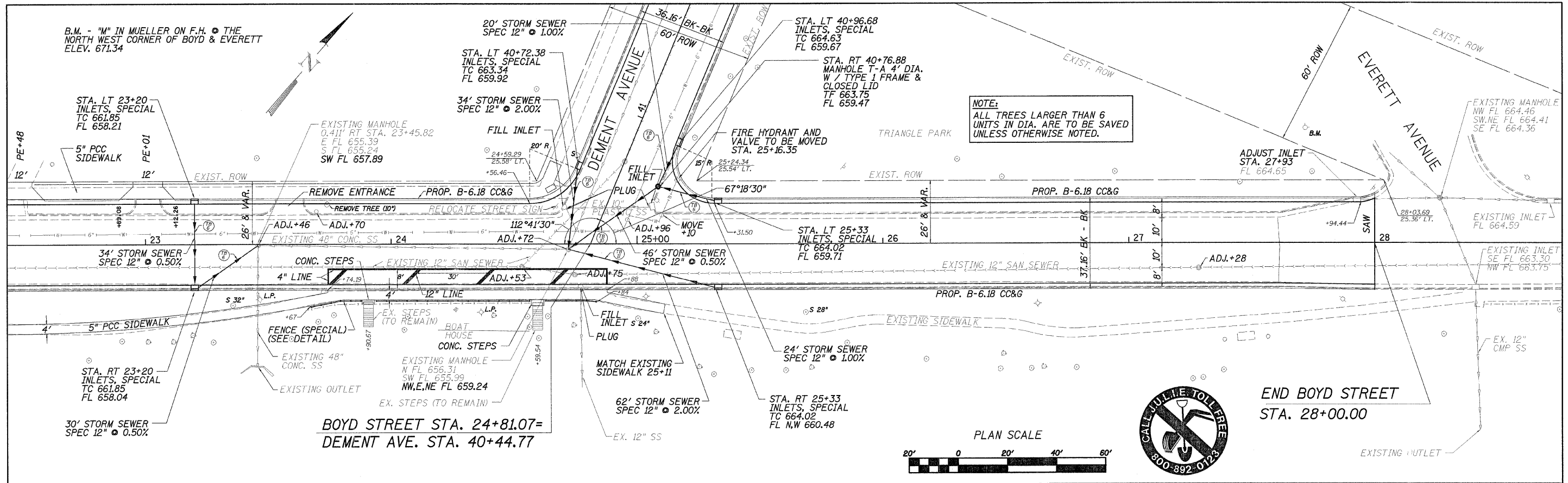
WILLET, HOFMANN & ASSOCIATES, INC
CONSULTING ENGINEERS
DIXON, IL

SCHEDULES		F.A. RTE.	SECTION	COUNTY	TOTAL SHEETS	SHEET NO.
SCALE: _____	SHEET NO. ____ OF ____ SHEETS	5482	07-00171-00-FP	LEE	25	8
STA. _____ TO STA. _____				CONTRACT NO. 85429		
FED. ROAD DIST. NO. _____ ILLINOIS FED. AID PROJECT _____						

Contract 85429



FILE NAME =	USER NAME = USER1	DESIGNED =	REVISED =	WILLETT, HOFMANN & ASSOCIATES, INC CONSULTING ENGINEERS DIXON, IL	BOYD STREET - PLAN AND PROFILE	F.A. RTE. =	SECTION	COUNTY	TOTAL SHEETS	SHEET NO.	
FILE # =	PLOT SCALE = 1/8"=1'-0"	DRAWN =	REVISED =			5482	07-00171-00-PP	LEE	25	9	
S:\Trans\1050007\pp\BOYD1.dgn	PLOT DATE = 1/20/11	CHECKED =	REVISED =			SCALE: SHEET NO. OF SHEETS STA. 17+00 TO STA. 22+50		CONTRACT NO. 85429			
		DATE =	REVISED =			FED. ROAD DIST. NO. ILLINOIS FED. AID PROJECT					

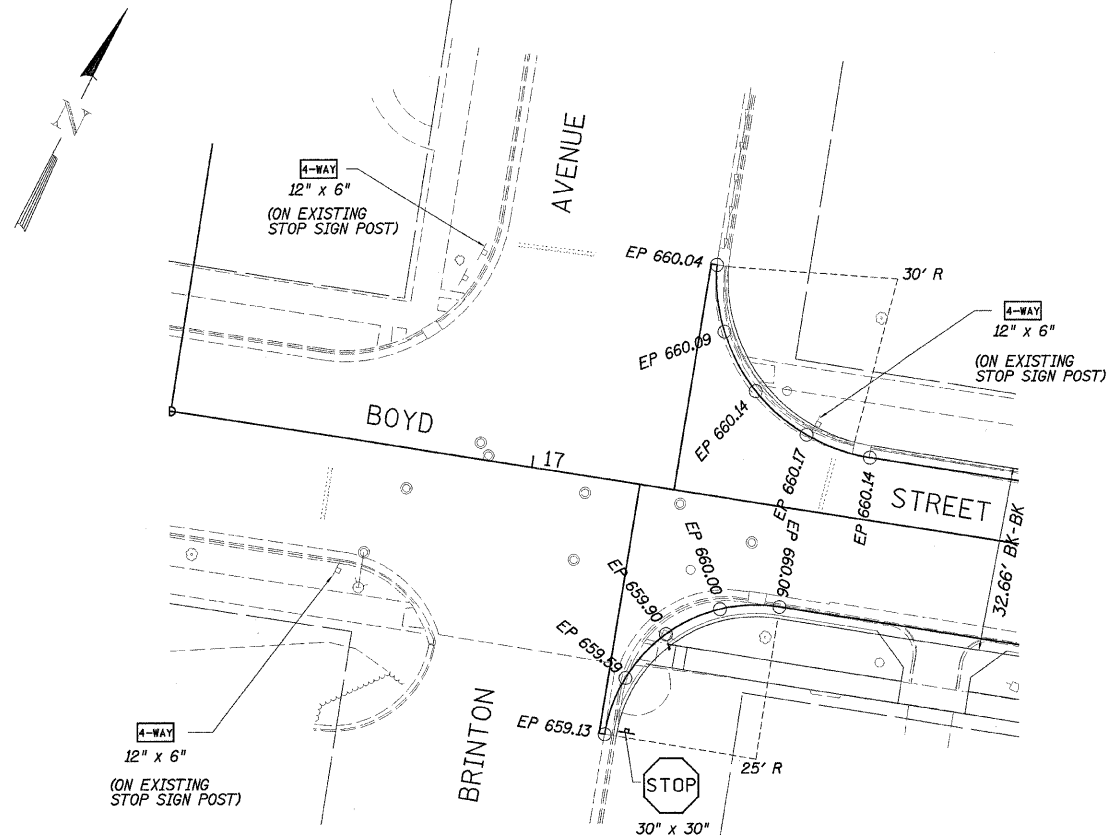


DATE	
BY	
NO.	
DATE	
BY	
NO.	
DATE	
BY	
NO.	

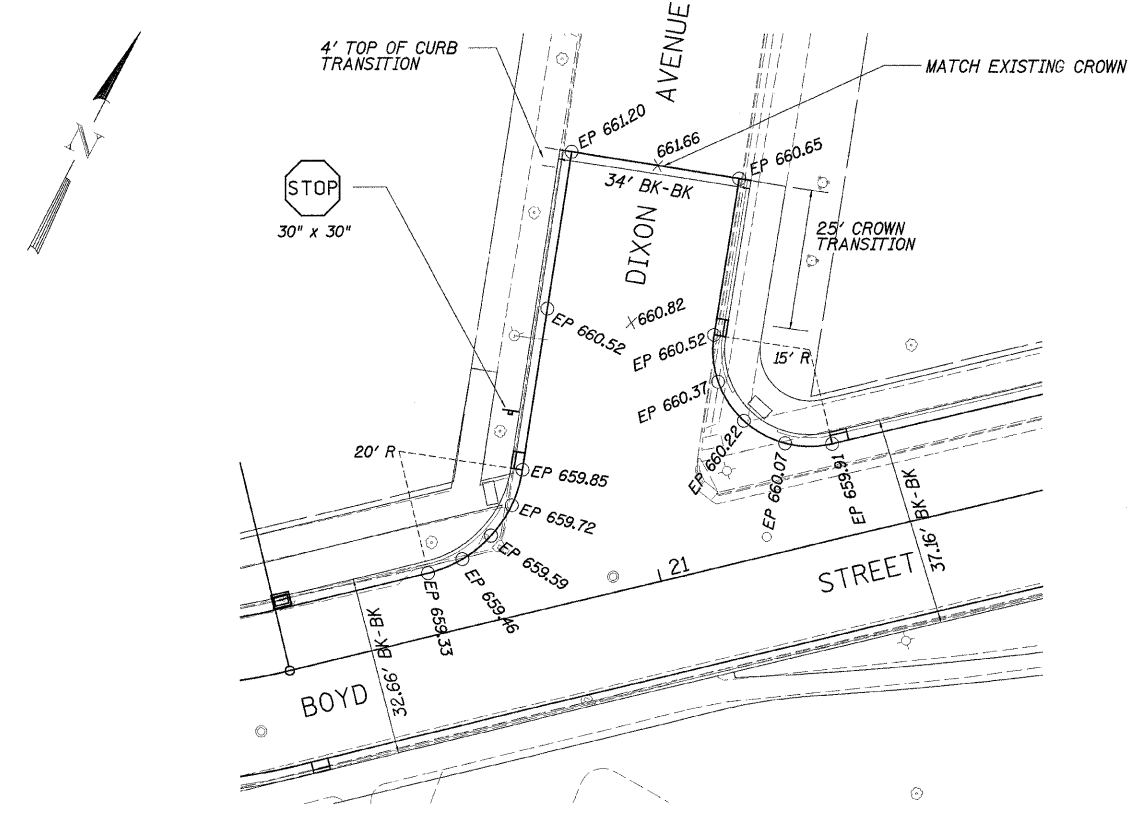
DATE	
BY	
NO.	
DATE	
BY	
NO.	
DATE	
BY	
NO.	

FILE NAME = S:\Trans\105007\ppBOYD1.dgn	USER NAME = USER#	DESIGNED -	REVISED -	WILLETT, HOFMANN & ASSOCIATES, INC CONSULTING ENGINEERS DIXON, IL	BOYD STREET - PLAN AND PROFILE			F.A. RTE. 5482	SECTION 07-00171-00-FP	COUNTY LEE	TOTAL SHEETS 25	SHEET NO. 10
PLOT SCALE = #SCALE#	PLOT DATE = #DATE#	DRAWN -	REVISED -		SCALE: _____	SHEET NO. _____	OF _____	SHEETS	STA. 22+50 TO STA. 28+00	FED. ROAD DIST. NO. _____	ILLINOIS FED. AID PROJECT	CONTRACT NO. 85429
		CHECKED -	REVISED -									
		DATE -	REVISED -									

PLAN	DESIGNED	BY	DATE
NOTE BOOK	PLOTTED		
NO.	GRADES CHECKED		
	STRUCTURE NOTATIONS OK		
	FILE NAME		

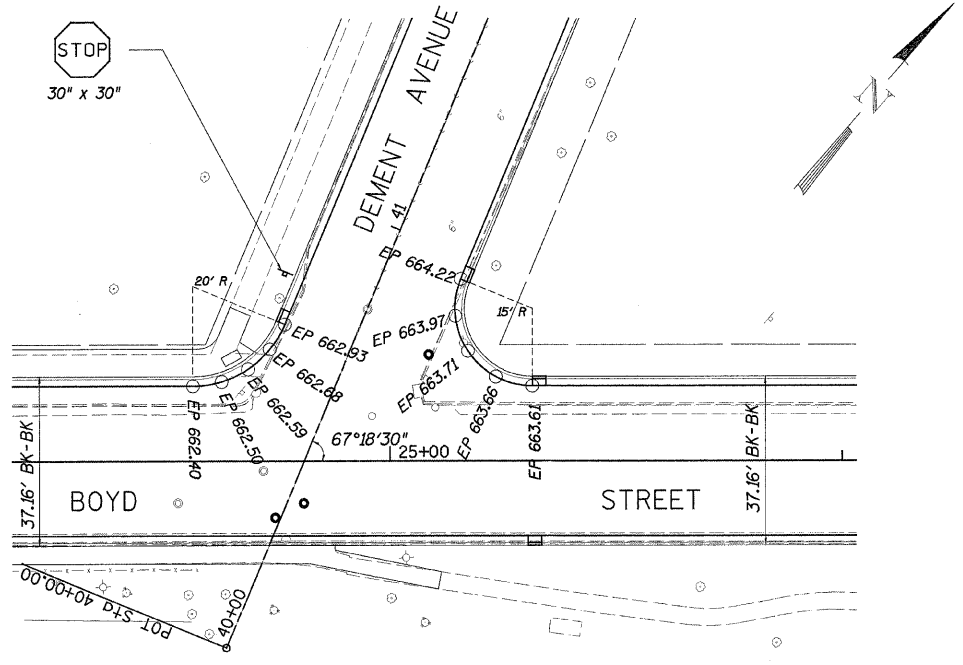


BOYD ST. & BRINTON AVE. INTERSECTION
INTERSECTION DESIGNED FOR WB-55 WITH ENCROACHMENT



BOYD ST. & DIXON AVE. INTERSECTION
INTERSECTION DESIGNED FOR S-BUS-36 WITH NO ENCROACHMENT

PROFILE	DESIGNED	BY	DATE
NOTE BOOK	PLOTTED		
NO.	GRADES CHECKED		
	STRUCTURE NOTATIONS OK		
	FILE NAME		



BOYD ST. & DEMENT AVE. INTERSECTION
INTERSECTION DESIGNED FOR S-BUS-36 WITH NO ENCROACHMENT

INTERSECTION PAVEMENT
ELEVATIONS & PROPOSED
TRAFFIC CONTROL DEVICES

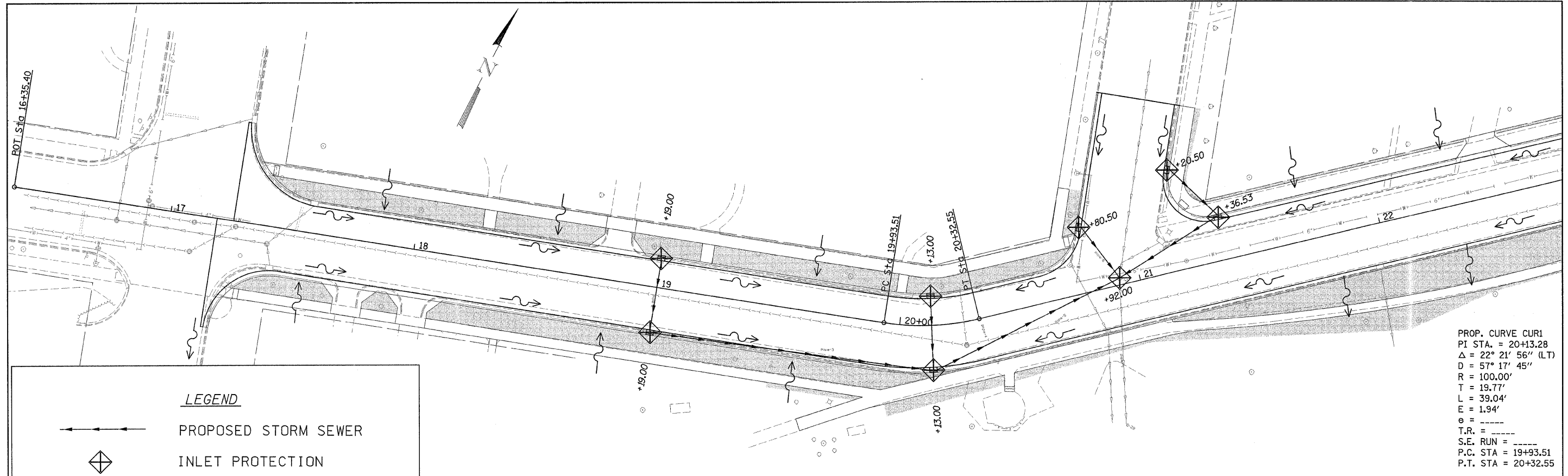
S:\Trans\1050007\ppBOYD1.dgn

FILE NAME =	USER NAME = #USER#	DESIGNED -	REVISED -
#FILE#		DRAWN -	REVISED -
	PLOT SCALE = #SCALE#	CHECKED -	REVISED -
	PLOT DATE = #DATE#	DATE -	REVISED -

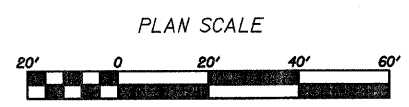
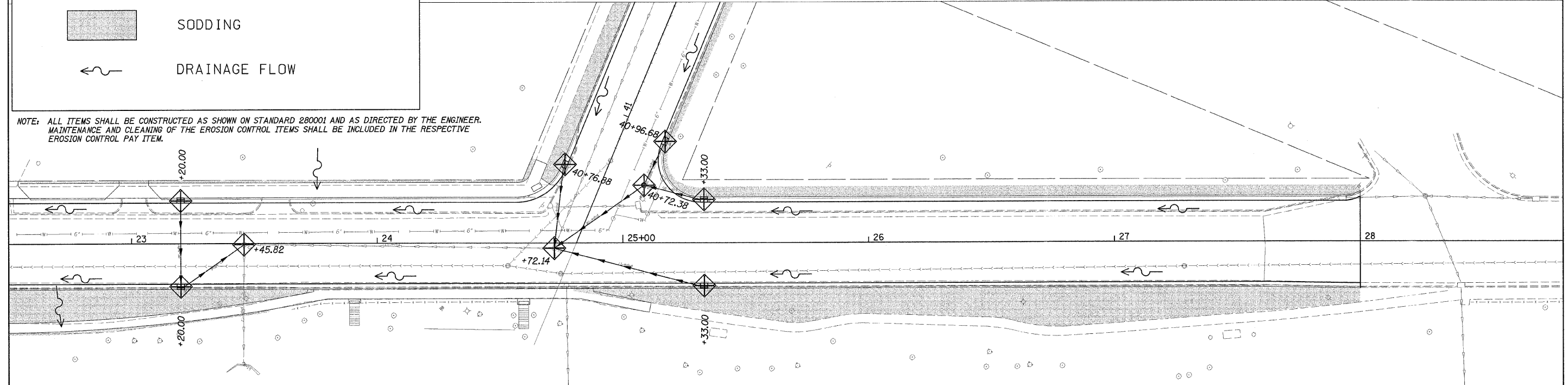
WILLETT, HOFMANN & ASSOCIATES, INC
CONSULTING ENGINEERS
DIXON, IL

INTERSECTION DETAILS	
SCALE: _____	SHEET NO. ____ OF ____ SHEETS STA. _____ TO STA. _____

F.A. RTE.	SECTION	COUNTY	TOTAL SHEETS	SHEET NO.
5482	07-00171-00-FP	LEE	25	12
FED. ROAD DIST. NO. _____ ILLINOIS FED. AID PROJECT			CONTRACT NO. 85429	



NOTE: ALL ITEMS SHALL BE CONSTRUCTED AS SHOWN ON STANDARD 280001 AND AS DIRECTED BY THE ENGINEER. MAINTENANCE AND CLEANING OF THE EROSION CONTROL ITEMS SHALL BE INCLUDED IN THE RESPECTIVE EROSION CONTROL PAY ITEM.



PLAN	DATE
BY	
CHECKED	
NO. _____	

PROFILE	DATE
BY	
CHECKED	
NO. _____	

FILE NAME = #FILEL\$	USER NAME = #USER#	DESIGNED -	REVISED -	WILLETT, HOFMANN & ASSOCIATES, INC CONSULTING ENGINEERS DIXON, IL	STORM WATER POLLUTION PREVENTION PLAN			F.A. RTE. 5482	SECTION 07-00171-00-FP	COUNTY LEE	TOTAL SHEETS 25	SHEET NO. 13	
S:\Trans\1050D07\swpppBOYD.dgn	PLOT SCALE = #SCALE#	DRAWN -	REVISED -		SCALE: _____	SHEET NO. _____	OF _____	SHEETS	STA. _____	TO STA. _____	CONTRACT NO. 85429		
	PLOT DATE = #DATE#	CHECKED -	REVISED -		FED. ROAD DIST. NO. _____ ILLINOIS FED. AID PROJECT								
		DATE -	REVISED -										

STORM WATER POLLUTION PREVENTION PLAN

THE FOLLOWING PLAN IS ESTABLISHED AND INCORPORATED IN THE PROJECT TO DIRECT THE CONTRACTOR IN THE PLACEMENT OF TEMPORARY EROSION CONTROL SYSTEMS AND TO PROVIDE A STORM SEWER WATER POLLUTION PREVENTION PLAN FOR COMPLIANCE UNDER NPDES.

THE PURPOSE OF THIS PLAN IS TO MINIMIZE EROSION WITHIN THE CONSTRUCTION SITE AND TO LIMIT SEDIMENTS FROM LEAVING THE CONSTRUCTION SITE BY UTILIZING PROPER TEMPORARY EROSION CONTROL SYSTEMS AND PROVIDING GROUND COVER WITHIN A REASONABLE AMOUNT OF TIME.

CERTAIN EROSION CONTROL FACILITIES SHALL BE INSTALLED BY THE CONTRACTOR AT THE BEGINNING OF CONSTRUCTION. OTHER ITEMS SHALL BE INSTALLED BY THE CONTRACTOR AS DIRECTED BY THE ENGINEER ON A CASE BY CASE SITUATION DEPENDING ON THE CONTRACTOR'S SEQUENCE OF ACTIVITIES, TIME OF YEAR, AND EXPECTED WEATHER CONDITIONS.

THE CONTRACTOR SHALL INSTALL PERMANENT EROSION CONTROL SYSTEMS AND SODDING WITHIN A TIME FRAME SPECIFIED HEREIN AND AS DIRECTED BY THE ENGINEER, THEREFORE MINIMIZING THE AMOUNT OF AREA SUSCEPTIBLE TO EROSION AND REDUCING THE AMOUNT OF TEMPORARY SEEDING. THE ENGINEER WILL DETERMINE IF ANY TEMPORARY EROSION CONTROL SYSTEMS SHOWN IN THE PLAN CAN BE DELETED AND IF ANY ADDITIONAL TEMPORARY EROSION CONTROL SYSTEMS, WHICH ARE NOT INCLUDED IN THIS PLAN, SHALL BE ADDED. THE CONTRACTOR SHALL PERFORM ALL WORK AS DIRECTED BY THE ENGINEER AND AS SHOWN IN STANDARD 280001 OF THE PLANS.

SECTION 280, TEMPORARY EROSION CONTROL, OF THE STANDARD SPECIFICATIONS ADDITIONALLY SUPPLEMENTS THIS PLAN.

SITE DESCRIPTION
DESCRIPTION OF CONSTRUCTION ACTIVITY:

1. THE PROJECT CONSISTS OF TOTAL RECONSTRUCTION OF BOYD STREET BETWEEN BRINTON AVENUE AND EVERETT AVENUE AND DEMENT AVENUE BETWEEN BOYD STREET AND EVERETT AVENUE.
2. CONSTRUCTION INCLUDES PAVEMENT REMOVAL, EARTH EXCAVATION, CONCRETE DRIVEWAYS, SIDEWALKS, AND CURB & GUTTER, NEW STORM SEWER AND INLETS, VARIOUS PAVEMENT ITEMS AND OTHER MISCELLANEOUS ITEMS OF CONSTRUCTION.

DESCRIPTION OF INTENDED SEQUENCE FOR MAJOR CONSTRUCTION ACTIVITIES WHICH WILL DISTURB SOILS FOR MAJOR PORTIONS OF THE CONSTRUCTION SITE:

1. PAVEMENT REMOVAL AND EARTH EXCAVATION
2. STORM SEWER INSTALLATION
3. INSTALLATION OF INLET & PIPE PROTECTION
4. AGGREGATE BASE, BITUMINOUS SURFACE AND RELATED APPURTENANCES
5. PLACEMENT OF PERMANENT EROSION CONTROL INCLUDING SODDING

AREA OF CONSTRUCTION SITE:

THE TOTAL AREA OF THE CONSTRUCTION IS ESTIMATED TO BE 16 ACRES OF WHICH 16 ACRES WILL BE DISTURBED BY EXCAVATION, GRADING, AND OTHER ACTIVITIES.

OTHER REPORTS, STUDIES AND PLANS WHICH AID IN THE DEVELOPMENT OF THE STORM SEWER POLLUTION PREVENTION PLAN AS REFERENCED DOCUMENTS:

1. INFORMATION OF THE SOILS AND TERRAIN WITHIN THE SITE WAS OBTAINED FROM CITY OFFICIALS FOR THE DEVELOPMENT OF THE PROPOSED TEMPORARY EROSION CONTROL SYSTEMS.
2. PROJECT PLANS, DOCUMENTS, SPECIFICATIONS AND SPECIAL PROVISIONS, AND PLAN DRAWINGS INDICATING DRAINAGE PATTERNS AND APPROXIMATE SLOPES ANTICIPATED AFTER GRADING ACTIVITIES WERE UTILIZED FOR THE PROPOSED PLACEMENT OF THE TEMPORARY EROSION CONTROL SYSTEMS.

CONTROLS - EROSION CONTROLS AND SEDIMENT CONTROL
DESCRIPTION OF STABILIZATION PRACTICES AT THE BEGINNING OF CONSTRUCTION

1. THE DRAWINGS, SPECIFICATIONS AND SPECIAL PROVISIONS WILL ENSURE THAT EXISTING VEGETATION IS PRESERVED WHERE ATTAINABLE AND DISTURBED PORTIONS OF THE SITE WILL BE STABILIZED. STABILIZATION PRACTICES INCLUDE: TEMPORARY SEEDING, PERMANENT SODDING, AND OTHER APPROPRIATE MEASURES AS DIRECTED BY THE ENGINEER. STABILIZATION MEASURES SHALL BE INITIATED AS SOON AS PRACTICABLE IN PORTIONS OF THE SITE WHERE CONSTRUCTION ACTIVITIES HAVE TEMPORARILY OR PERMANENTLY CEASED, BUT IN NO CASE MORE THAN 7 DAYS AFTER THE CONSTRUCTION ACTIVITY IN THAT PORTION OF THE SITE HAS TEMPORARILY OR PERMANENTLY CEASED.
 - (a) AREAS OF EXISTING VEGETATION (WOOD AND GRASSLANDS) OUTSIDE THE PROPOSED CONSTRUCTION LIMITS SHALL BE IDENTIFIED BY THE ENGINEER FOR PRESERVING AND SHALL BE PROTECTED FROM CONSTRUCTION ACTIVITIES.
 - (b) DEAD, DISEASED, OR UNSUITABLE VEGETATION WITHIN THE SITE SHALL BE REMOVED AS DIRECTED BY THE ENGINEER, ALONG WITH REQUIRED TREE REMOVAL.
 - (c) AS SOON AS REASONABLE ACCESS IS AVAILABLE TO ALL LOCATIONS WHERE WATER DRAINS AWAY FROM THE PROJECT, TEMPORARY DITCH CHECKS AND PERIMETER EROSION BARRIER SHALL BE INSTALLED AS CALLED OUT IN THIS PLAN AND DIRECTED BY THE ENGINEER.
 - (d) BARE AND SPARSELY VEGETATED GROUND IN HIGH ERODABLE AREAS AS DETERMINED BY THE ENGINEER
 - (e) AT LOCATIONS WHERE A SIGNIFICANT AMOUNT OF WATER DRAINS INTO THE CONSTRUCTION ZONE FROM OUTSIDE AREAS (ADJACENT LANDOWNERS), TEMPORARY DITCH CHECKS WILL BE UTILIZED TO LOCALLY DIVERT WATER, REDUCE FLOW RATES, AND COLLECT OUTSIDE SILTATION INSIDE THAT RIGHT-OF-WAY LINE.

2. ESTABLISHMENT OF THESE TEMPORARY EROSION CONTROL MEASURES WILL HAVE ADDITIONAL BENEFITS TO THE PROJECT. DESIRABLE GRASS SEED WILL BECOME ESTABLISHED IN THESE AREAS AND WILL SPREAD SEEDS ONTO THE CONSTRUCTION SITE UNTIL PERMANENT SEEDING/MOWING AND OVERSEEDING CAN BE COMPLETED.

DESCRIPTION OF STABILIZATION PRACTICES DURING CONSTRUCTION

1. DURING CONSTRUCTION, AREAS OUTSIDE THE CONSTRUCTION LIMITS AS OUTLINED PREVIOUSLY HEREIN SHALL BE PROTECTED. THE CONTRACTOR SHALL NOT USE THIS AREA FOR STAGING (EXCEPT AS DESCRIBED ON THE PLANS AND DIRECTED BY THE ENGINEER), PARKING OF VEHICLES OR CONSTRUCTION EQUIPMENT, STORAGE OF MATERIALS, OR OTHER CONSTRUCTION RELATED ACTIVITIES.
 - (a) WITHIN THE CONSTRUCTION LIMITS, AREAS WHICH MAY BE SUSCEPTIBLE TO EROSION AS DETERMINED BY THE ENGINEER SHALL REMAIN UNDISTURBED UNTIL FULL SCALE CONSTRUCTION IS UNDERWAY TO PREVENT UNNECESSARY SOIL EROSION.
 - (b) EARTH STOCKPILES SHALL BE TEMPORARILY SEEDED IF THEY ARE TO REMAIN UNUSED FOR MORE THAN FOURTEEN DAYS.
 - (c) AS CONSTRUCTION PROCEEDS, THE CONTRACTOR SHALL INSTITUTE THE FOLLOWING AS DIRECTED BY THE ENGINEER:
 - I. PLACE TEMPORARY EROSION CONTROL FACILITIES AT LOCATIONS SHOWN ON THE PLANS.
 - II. TEMPORARILY SEED ERODABLE BARE EARTH ON A WEEKLY BASIS TO MINIMIZE THE AMOUNT OF ERODABLE SURFACE AREA WITHIN THE CONTRACT LIMITS.
 - (d) EXCAVATED AREAS AND EMBANKMENT SHALL BE PERMANENTLY SODDED IMMEDIATELY AFTER FINAL GRADING. IF NOT, THEY SHALL BE TEMPORARILY SEEDED IF NO CONSTRUCTION ACTIVITY IN THE AREA IS PLANNED FOR SEVEN DAYS.
 - (e) CONSTRUCTION EQUIPMENT SHALL BE STORED AND FUELED ONLY AT DESIGNED LOCATIONS. ALL NECESSARY MEASURES SHALL BE TAKEN TO CONTAIN ANY FUEL OR OTHER POLLUTANT IN ACCORDANCE WITH EPA WATER QUALITY REGULATIONS. LEAKING EQUIPMENT OR SUPPLIES SHALL BE IMMEDIATELY REPAIRED OR REMOVED FROM THE SITE.
 - (f) THE RESIDENT ENGINEER SHALL INSPECT THE PROJECT DAILY DURING CONSTRUCTION ACTIVITIES. INSPECTION SHALL ALSO BE DONE WEEKLY AND AFTER RAINS OF 1/2 INCH OR GREATER OR EQUIVALENT SNOWFALL AND DURING THE WINTER SHUTDOWN PERIOD. THE PROJECT SHALL ADDITIONALLY BE INSPECTED BY THE CONSTRUCTION FIELD ENGINEER ON A BI-WEEKLY BASIS TO DETERMINE THAT EROSION CONTROL EFFORTS ARE IN PLACE AND EFFECTIVE AND IF OTHER EROSION CONTROL WORK IS NECESSARY.

- (g) SEDIMENT COLLECTED DURING CONSTRUCTION OF THE VARIOUS TEMPORARY EROSION CONTROL SYSTEMS SHALL BE DISPOSED OF ON THE SITE ON A REGULAR BASIS AS DIRECTED BY THE ENGINEER. THE COST OF THIS MAINTENANCE SHALL BE INCLUDED IN THE UNIT BID PRICE FOR EARTH EXCAVATION (SPECIAL).
- (h) THE TEMPORARY EROSION CONTROL SYSTEM SHALL BE REMOVED AS DIRECTED BY THE ENGINEER AFTER USE IS NO LONGER NEEDED OR NO LONGER FUNCTIONING. THE COST OF THIS REMOVAL SHALL BE INCLUDED IN THE UNIT BID PRICE FOR VARIOUS TEMPORARY EROSION CONTROL PAY ITEMS.

DESCRIPTION OF STRUCTURAL PRACTICES AFTER FINAL GRADING:

1. TEMPORARY EROSION CONTROL SYSTEMS SHALL BE LEFT IN PLACE WITH PROPER MAINTENANCE UNTIL PERMANENT EROSION CONTROL IS IN PLACE AND WORKING PROPERLY AND ALL PROPOSED TURF AREAS SEEDED AND ESTABLISHED.
2. ONCE PERMANENT EROSION CONTROL SYSTEMS AS PROPOSED IN THE PLANS ARE FUNCTIONAL AND ESTABLISHED, TEMPORARY ITEMS SHALL BE REMOVED, CLEANED UP, AND DISTURBED TURF RESEEDED.

MAINTENANCE AFTER CONSTRUCTION:

1. CONSTRUCTION IS COMPLETE AFTER ACCEPTANCE BY I.D.O.T. FINAL INSPECTION. MAINTENANCE UP TO THIS DATE WILL BE BY THE CONTRACTOR.

MISCELLANEOUS:

1. TEMPORARY EROSION CONTROL SEEDING SHALL BE APPLIED AT A RATE OF 100 LBS/ACRES.
2. STRAW BALES, HAY BALES, PERIMETER EROSION BARRIER AND SILT FENCES WILL BE PERMITTED FOR TEMPORARY OR PERMANENT DITCH CHECKS. DITCH CHECKS MAY BE COMPOSED OF AGGREGATE, SILT PANELS, ROLLED EXCELSTOR, URETHANE FOAM/GEOTEXTILE (SILT SEDGES), AND/OR ANY OTHER MATERIAL APPROVED BY THE EROSION AND SEDIMENT CONTROL COORDINATOR.
3. SEDIMENT COLLECTED DURING CONSTRUCTION BY THE VARIOUS TEMPORARY EROSION CONTROL SYSTEMS SHALL BY DISPOSED OF ON THE SITE ON A REGULAR BASIS, AS DIRECTED BY THE ENGINEER. THE COST OF THIS MAINTENANCE SHALL BE PAID FOR AT THE CONTRACT UNIT PRICE PER CUBIC YARD FOR EARTH EXCAVATION (SPECIAL).
4. ALL EROSION CONTROL PRODUCTS FURNISHED SHALL BE SPECIFICALLY RECOMMENDED BY THE MANUFACTURER FOR THE USE SPECIFIED IN THE EROSION CONTROL PLAN. PRIOR TO THE APPROVAL AND USE OF THE PRODUCT, THE CONTRACTOR SHALL SUBMIT TO THE ENGINEER A NOTARIZED CERTIFICATION BY THE PRODUCER STATING THE INTENDED USE OF THE PRODUCT AND THAT THE PHYSICAL PROPERTIES REQUIRED FOR THIS APPLICATION ARE MET OR EXCEEDED. THE CONTRACTOR SHALL PROVIDE MANUFACTURER INSTALLATION PROCEDURES TO FACILITATE THE ENGINEER IN CONSTRUCTION INSPECTION.

THIS PLAN HAS BEEN PREPARED TO COMPLY WITH THE PROVISIONS OF THE NPDES PERMIT NUMBER ILR10, ISSUED BY THE ILLINOIS ENVIRONMENTAL PROTECTION AGENCY FOR STORM WATER DISCHARGES FROM CONSTRUCTION SITE ACTIVITIES.

I CERTIFY UNDER PENALTY OF LAW THAT THIS DOCUMENT AND ALL ATTACHMENTS WERE PREPARED UNDER MY DIRECTION OR SUPERVISION IN ACCORDANCE WITH A SYSTEM DESIGNED TO ASSURE THAT QUALIFIED PERSONNEL PROPERLY GATHERED AND EVALUATED THE INFORMATION SUBMITTED. BASED ON MY INQUIRY OF THE PERSON OR PERSONS WHO MANAGE THE SYSTEM, OR THOSE PERSONS DIRECTLY RESPONSIBLE FOR GATHERING THE INFORMATION, THE INFORMATION SUBMITTED IS, TO THE BEST OF MY KNOWLEDGE AND BELIEF, TRUE, ACCURATE AND COMPLETE. I AM AWARE THAT THERE ARE SIGNIFICANT PENALTIES FOR SUBMITTING FALSE INFORMATION, INCLUDING THE POSSIBILITY OF FINE AND IMPRISONMENT FOR KNOWING VIOLATIONS.

J. J. Burk
MAYOR 11/30/08
DATE

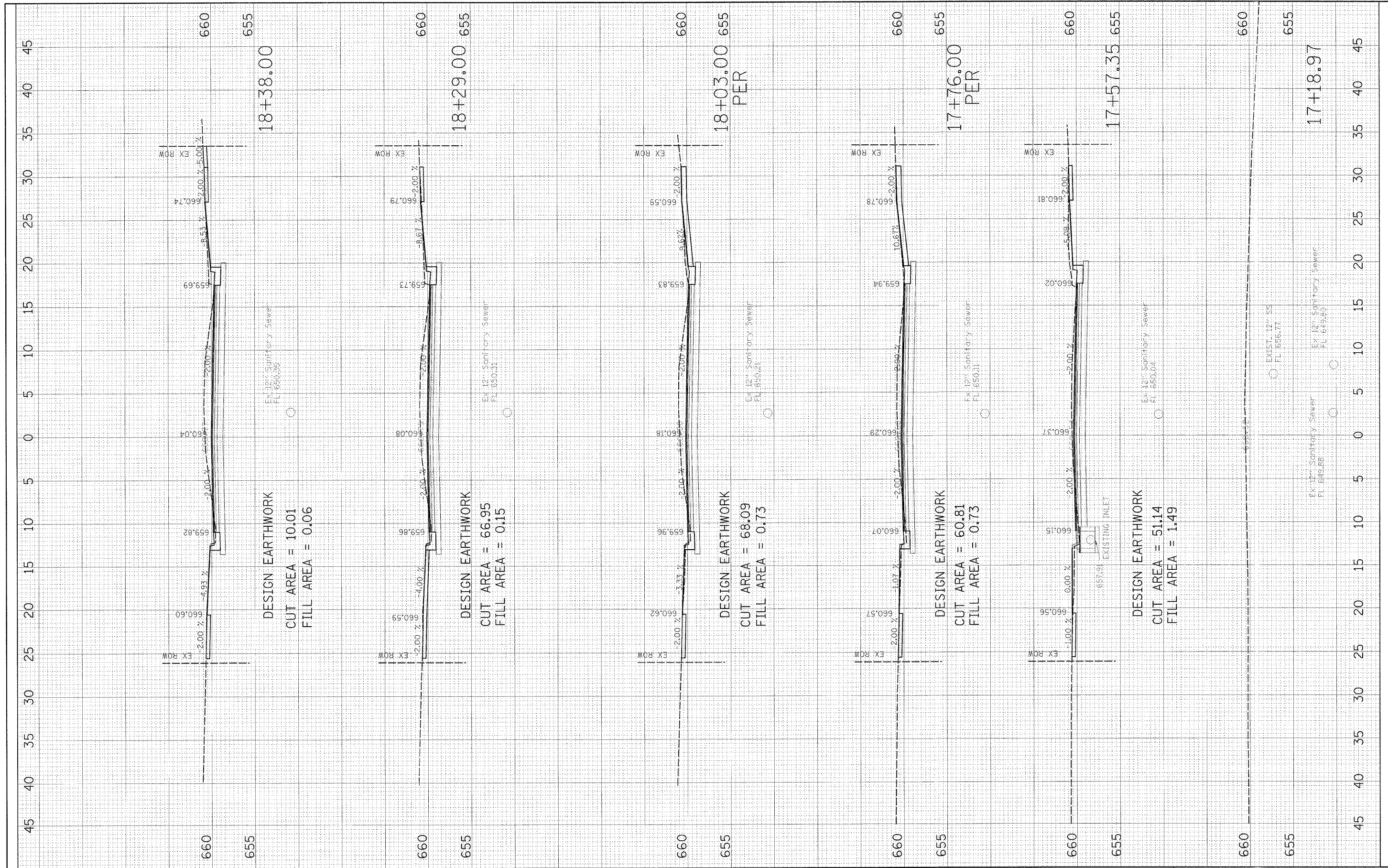
PLAN	DATE
BY	
REVISIONS	
NO.	
DATE	
BY	
REVISIONS	
NO.	
DATE	
BY	

PROFILE	DATE
BY	
REVISIONS	
NO.	
DATE	
BY	
REVISIONS	
NO.	
DATE	
BY	

FILE NAME =	USER NAME = #USER#	DESIGNED -	REVISED -	WILLETT, HOFMANN & ASSOCIATES, INC CONSULTING ENGINEERS DIXON, IL	STORM WATER POLLUTION PREVENTION PLAN	F.A. R.T.:	SECTION	COUNTY	TOTAL SHEETS	SHEET NO.
#FILE#	DRAWN -	REVISED -	5482			07-00171-00-FP	LEE	25	14	
	PLOT SCALE = #SCALE#	CHECKED -	REVISED -			CONTRACT NO. 85429				
S:\Trans\1050D07\swpppBOYD.dgn	PLOT DATE = #DATE#	DATE -	REVISED -			FED. ROAD DIST. NO. [ILLINOIS] FED. AID PROJECT				
					SCALE: _____	SHEET NO. ___ OF ___ SHEETS		STA. _____ TO STA. _____		

FINAL SURVEY	SURVEYED	BY	DATE
NOTE BOOK NO.	PLOTTED		
	TEMPLATE		
	AREAS CHECKED		
	AREAS CHECKED		

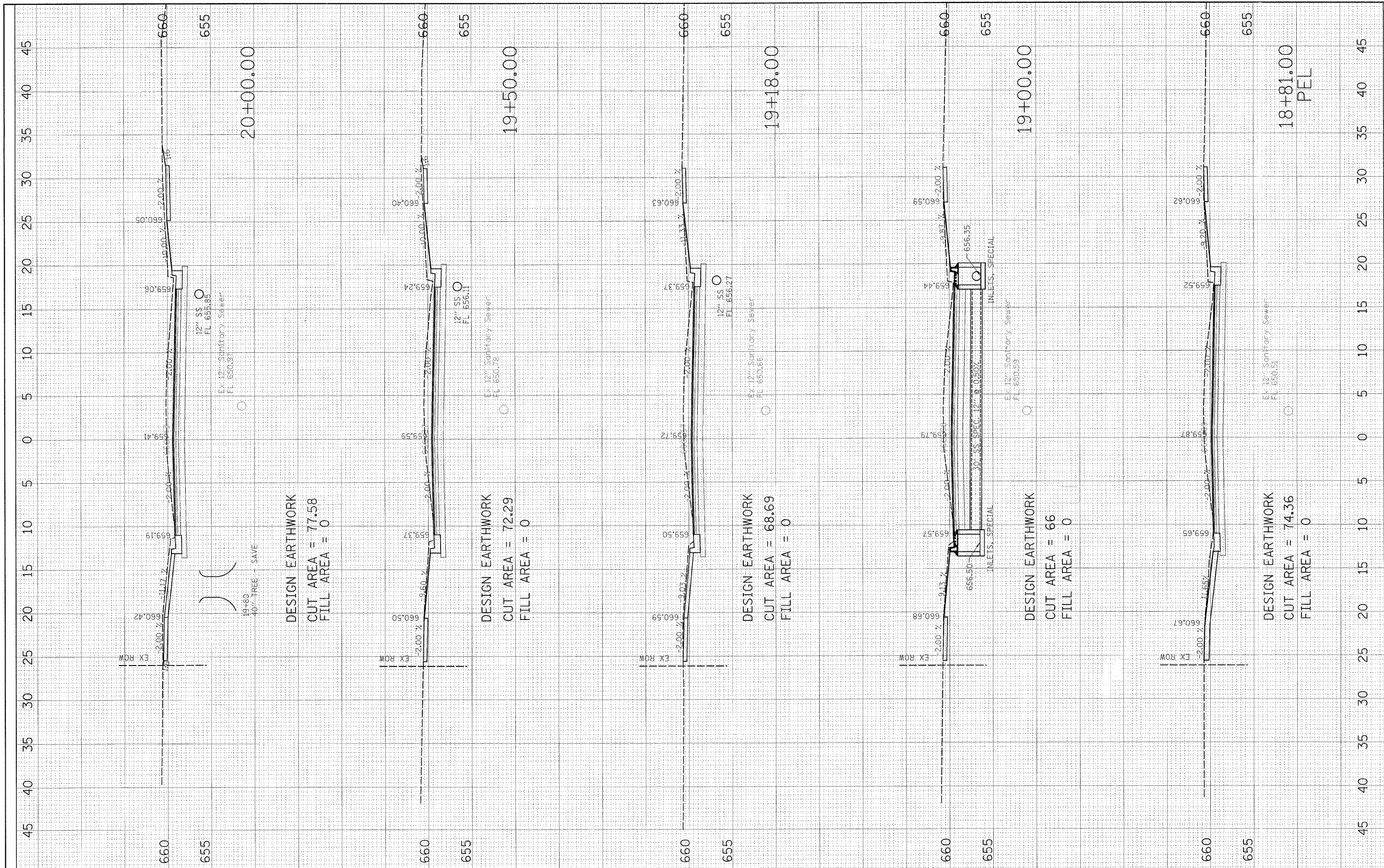
ORIGINAL SURVEY	DATE
NOTE BOOK NO.	



FILE NAME = S:\Trans\1050D07\85429\85429SHEETS.dgn	USER NAME = #USER#	DESIGNED -	REVISED -	WILLETT, HOFMANN & ASSOCIATES, INC CONSULTING ENGINEERS DIXON, IL	BOYD STREET - CROSS SECTIONS		F.A. RTE. 5482	SECTION 07-00171-00-FP	COUNTY LEE	TOTAL SHEETS 25	SHEET NO. 15	
#FILE#	PLOT SCALE = #SCALE#	DRAWN -	REVISED -		SCALE: _____	SHEET NO. ____ OF ____ SHEETS	STA. 17+18.97 TO STA. 18+38.00	FED. ROAD DIST. NO. _____	ILLINOIS FED. AID PROJECT	CONTRACT NO. 85429		
	PLOT DATE = #DATE#	CHECKED -	REVISED -									
		DATE -	REVISED -									

FINAL SURVEY	SURVEYED	DATE
NOTE BOOK	PLOTTED	BY
NO.	TEMPLATE	
	AREAS CHECKED	
	AREAS CHECKED	

ORIGINAL SURVEY	SURVEYED	DATE
NOTE BOOK	PLOTTED	BY
NO.	TEMPLATE	
	AREAS CHECKED	
	AREAS CHECKED	



FILE NAME = S:\Trans\105007 \x680YDSHEETS.dgn

USER NAME = #USER#
 PLOT SCALE = #SCALE#
 PLOT DATE = #DATE#

DESIGNED -
 DRAWN -
 CHECKED -
 DATE -

REVISED -
 REVISED -
 REVISED -
 REVISED -

WILLETT, HOFMANN & ASSOCIATES, INC
CONSULTING ENGINEERS
DIXON, IL

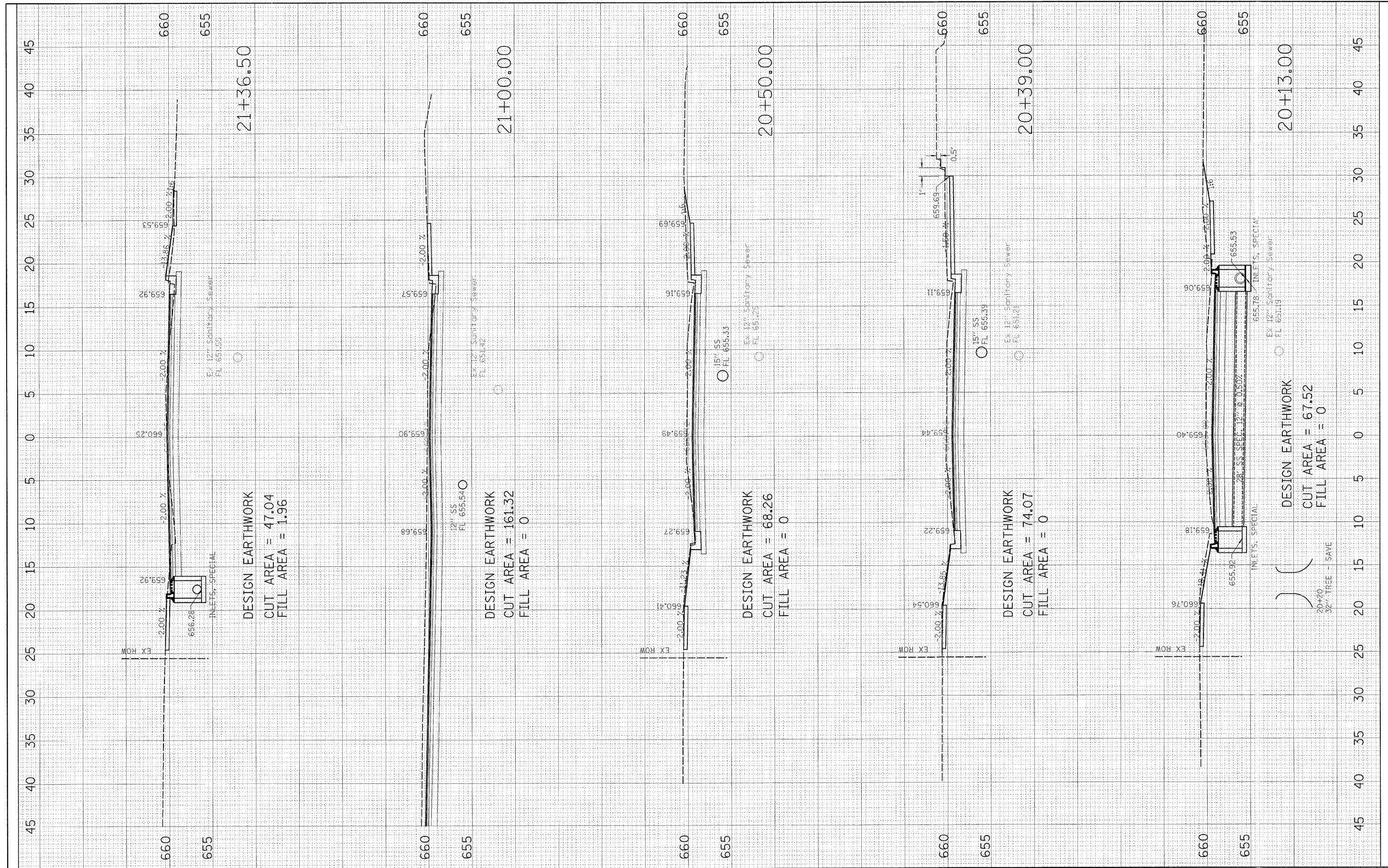
BOYD STREET - CROSS SECTIONS

SCALE: _____ SHEET NO. ____ OF ____ SHEETS STA. 18+81.00 TO STA. 20+00.00

F.A. RTE.	SECTION	COUNTY	TOTAL SHEETS	SHEET NO.
5482	07-00171-00-FP	LEE	25	16
CONTRACT NO. 85429				
FED. ROAD DIST. NO. [] ILLINOIS FED. AID PROJECT				

FINAL SURVEY	DATE
REVISED SURVEY	BY
NOTED SURVEY	
PLOTTED SURVEY	
TEMPLATE SURVEY	
AREAS CHECKED	
AREAS CHECKED	

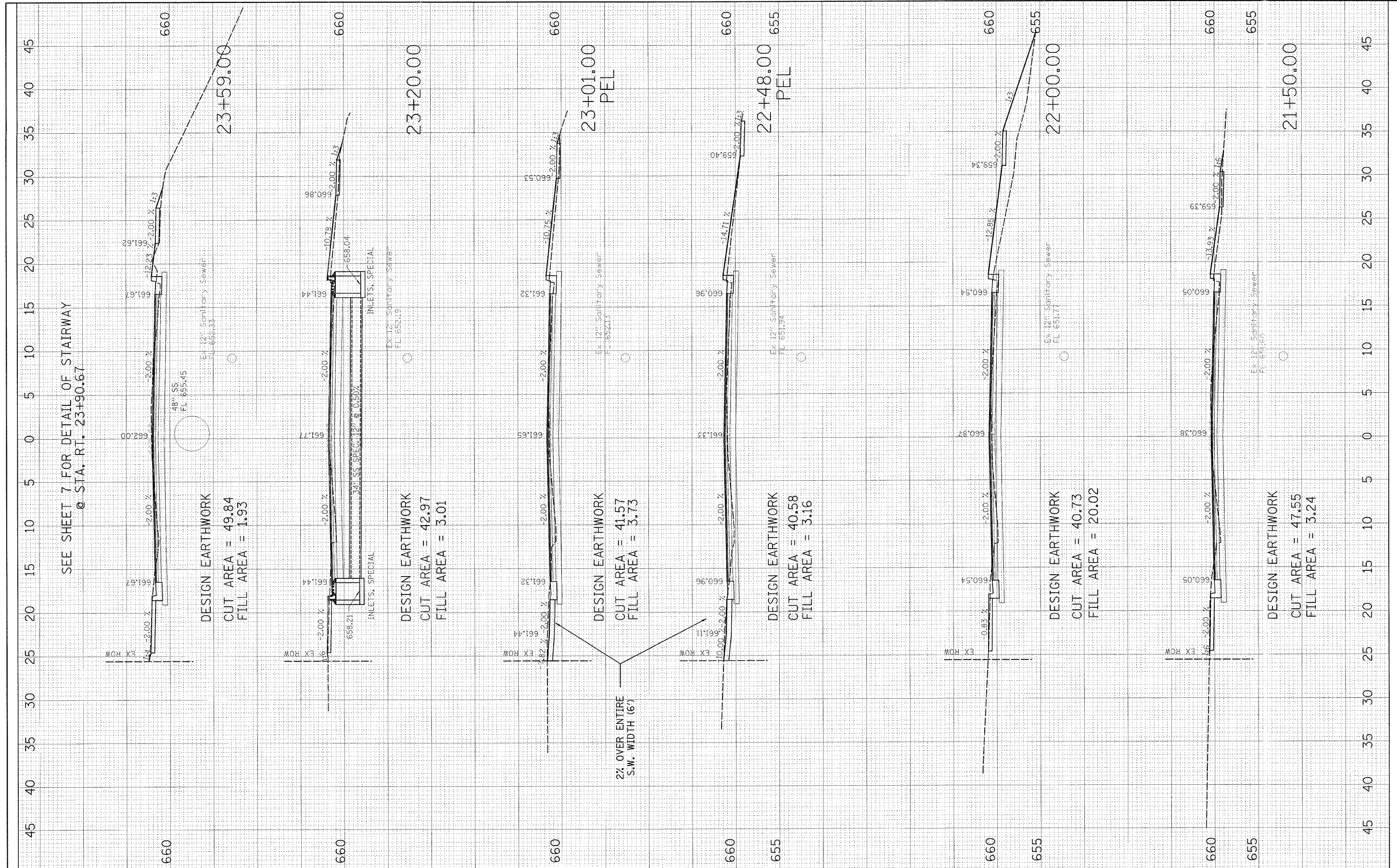
ORIGINAL SURVEY	DATE
REVISED SURVEY	BY
NOTED SURVEY	
PLOTTED SURVEY	
TEMPLATE SURVEY	
AREAS CHECKED	
AREAS CHECKED	



FILE NAME = S:\Trans\1050D07\xs80YDSHEETS.dgn	USER NAME = *USER*	DESIGNED -	REVISED -	WILLETT, HOFMANN & ASSOCIATES, INC CONSULTING ENGINEERS DIXON, IL	BOYD STREET - CROSS SECTIONS			F.A. RTE. 5482	SECTION 07-00171-00-PP	COUNTY LEE	TOTAL SHEETS 25	SHEET NO. 17
	PLOT SCALE = *SCALE*	DRAWN -	REVISED -		SCALE: _____	SHEET NO. ____ OF ____ SHEETS	STA. 20+34.00 TO STA. 21+36.50	FED. ROAD DIST. NO. _____	ILLINOIS FED. AID PROJECT	CONTRACT NO. 85429		
	PLOT DATE = *DATE*	CHECKED -	REVISED -									
		DATE -	REVISED -									

FILED	SURVEYED	DATE
SURVEY	PLotted	BY
NOTE BOOK	TEMPLATE	
AREAS CHECKED	AREAS CHECKED	
NO.		

ORIGINAL	DATE
SURVEY	BY
NOTE BOOK	
AREAS CHECKED	
NO.	



SEE SHEET 7 FOR DETAIL OF STAIRWAY @ STA. RT. 23+90.67

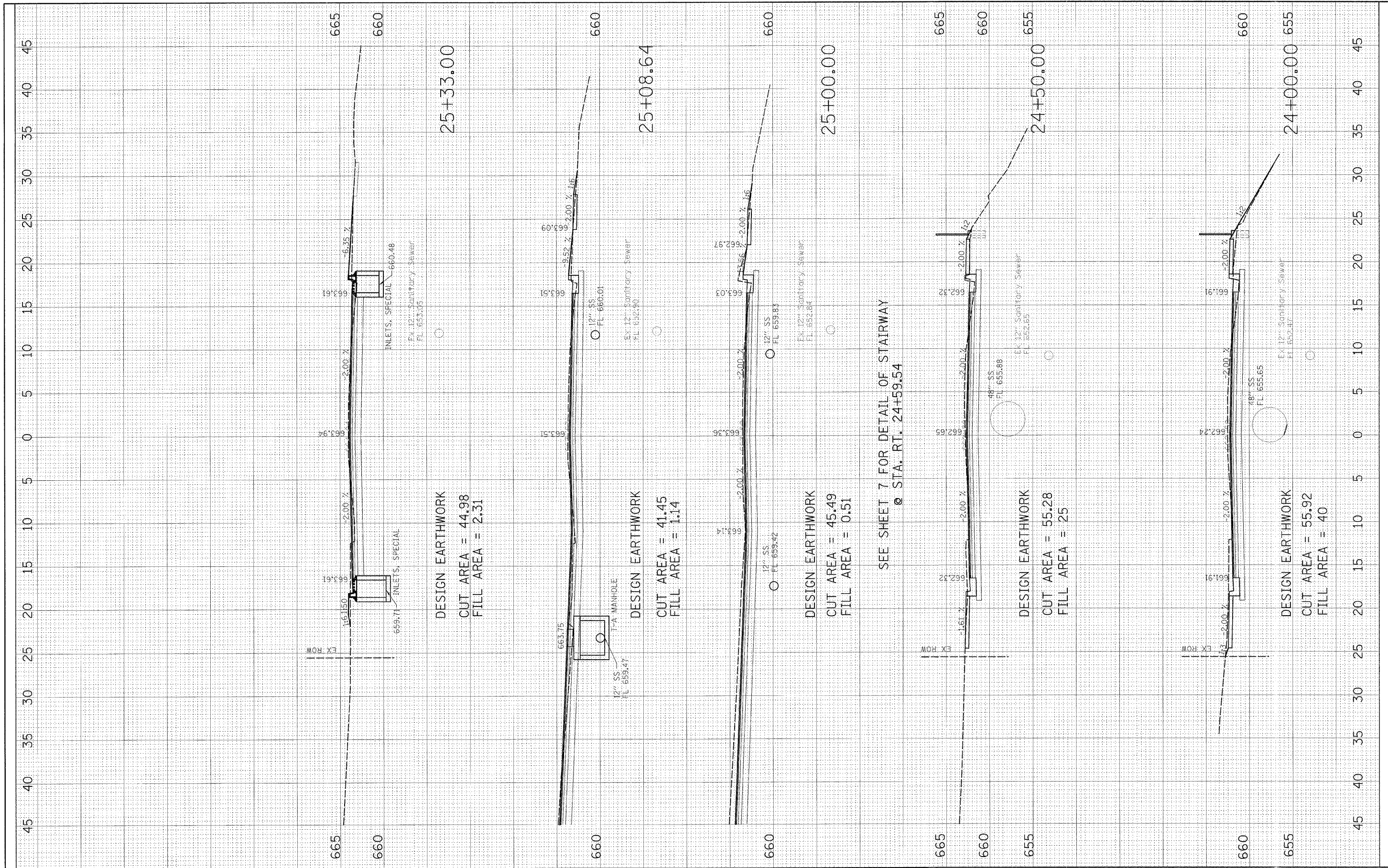
WILLETT, HOFMANN & ASSOCIATES, INC
CONSULTING ENGINEERS
DIXON, IL

BOYD STREET - CROSS SECTIONS

FILE NAME =	USER NAME = #USER#	DESIGNED -	REVISED -	SCALE: _____ SHEET NO. ___ OF ___ SHEETS STA. 21+50.00 TO STA. 23+59.00 F.A. RTE. 5482 SECTION 07-00171-00-PP COUNTY LEE TOTAL SHEETS 25 SHEET NO. 18 FED. ROAD DIST. NO. [ILLINOIS] FED. AID PROJECT CONTRACT NO. 85429
#FILE#	PLOT SCALE = #SCALE#	DRAWN -	REVISED -	
S:\Trans\1050D07 \xs80YDSHEETS.dgn	PLOT DATE = #DATE#	CHECKED -	REVISED -	
		DATE -	REVISED -	

FINAL SURVEY	SURVEYED	BY	DATE
NOTE BOOK	PLOTTED		
NO.	TEMPLATE		
	AREAS CHECKED		

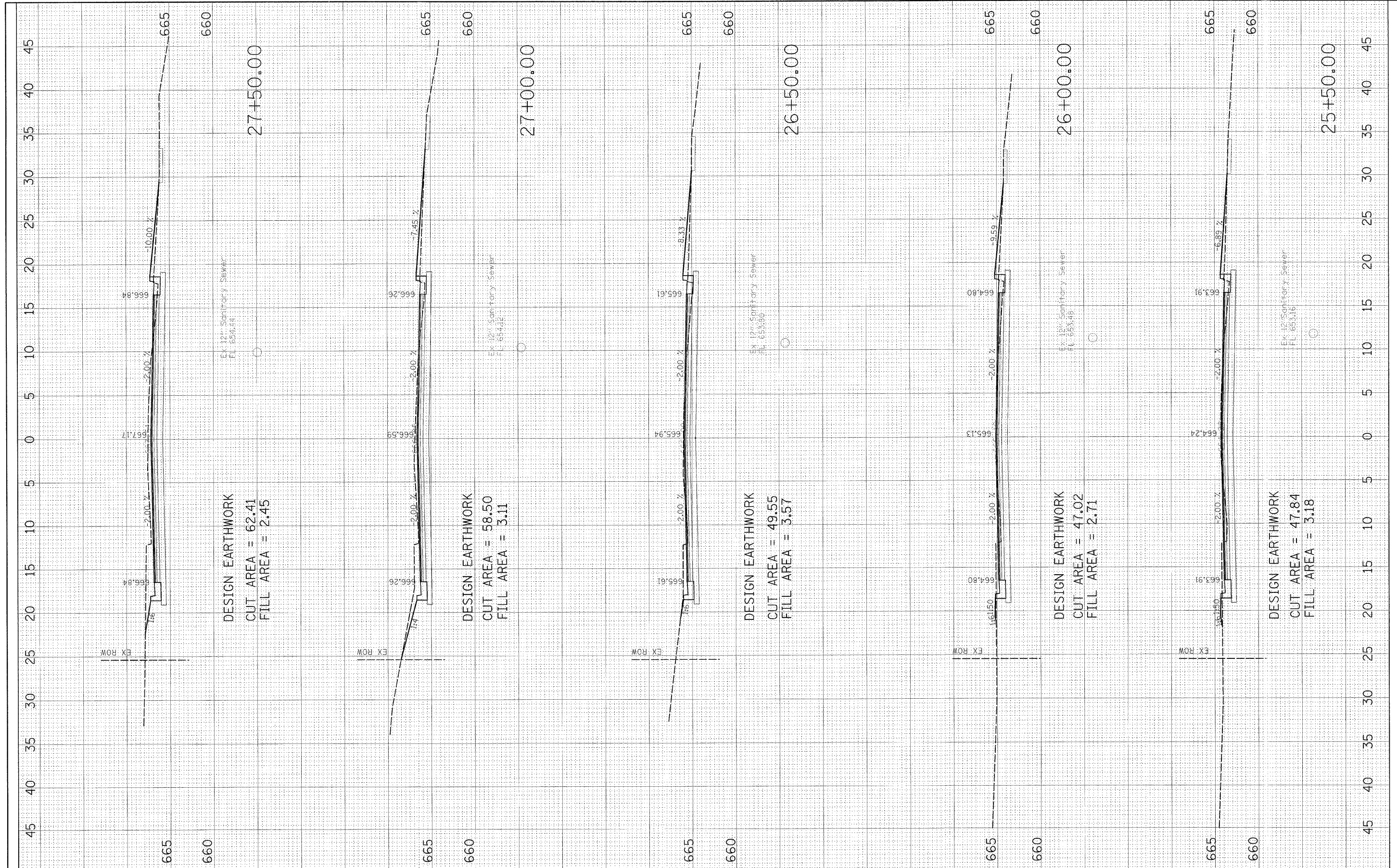
ORIGINAL SURVEY	SURVEYED	BY	DATE
NOTE BOOK	PLOTTED		
NO.	TEMPLATE		
	AREAS CHECKED		



FILE NAME = S:\Trans\1050D07\85BOYDSHEETS.dgn	USER NAME = #USER#	DESIGNED - ---	REVISED - ---	WILLETT, HOFMANN & ASSOCIATES, INC CONSULTING ENGINEERS DIXON, IL	BOYD STREET - CROSS SECTIONS		F.A. RTE. 5482	SECTION 07-00171-00-FP	COUNTY LEF	TOTAL SHEETS 25	SHEET NO. 19
	PLOT SCALE = #SCALE#	DRAWN - ---	REVISED - ---		SCALE: -----	SHEET NO. ___ OF ___ SHEETS	STA. 24+00.00 TO STA. 25+33.00	FED. ROAD DIST. NO. - ILLINOIS	FED. AID PROJECT	CONTRACT NO. 85429	
	PLOT DATE = #DATE#	CHECKED - ---	REVISED - ---								
		DATE - ---	REVISED - ---								

FINAL SURVEY	DATE
BY	
NOTED	
PLOTTED	
TEMPLATE	
AREAS CHECKED	
NO.	

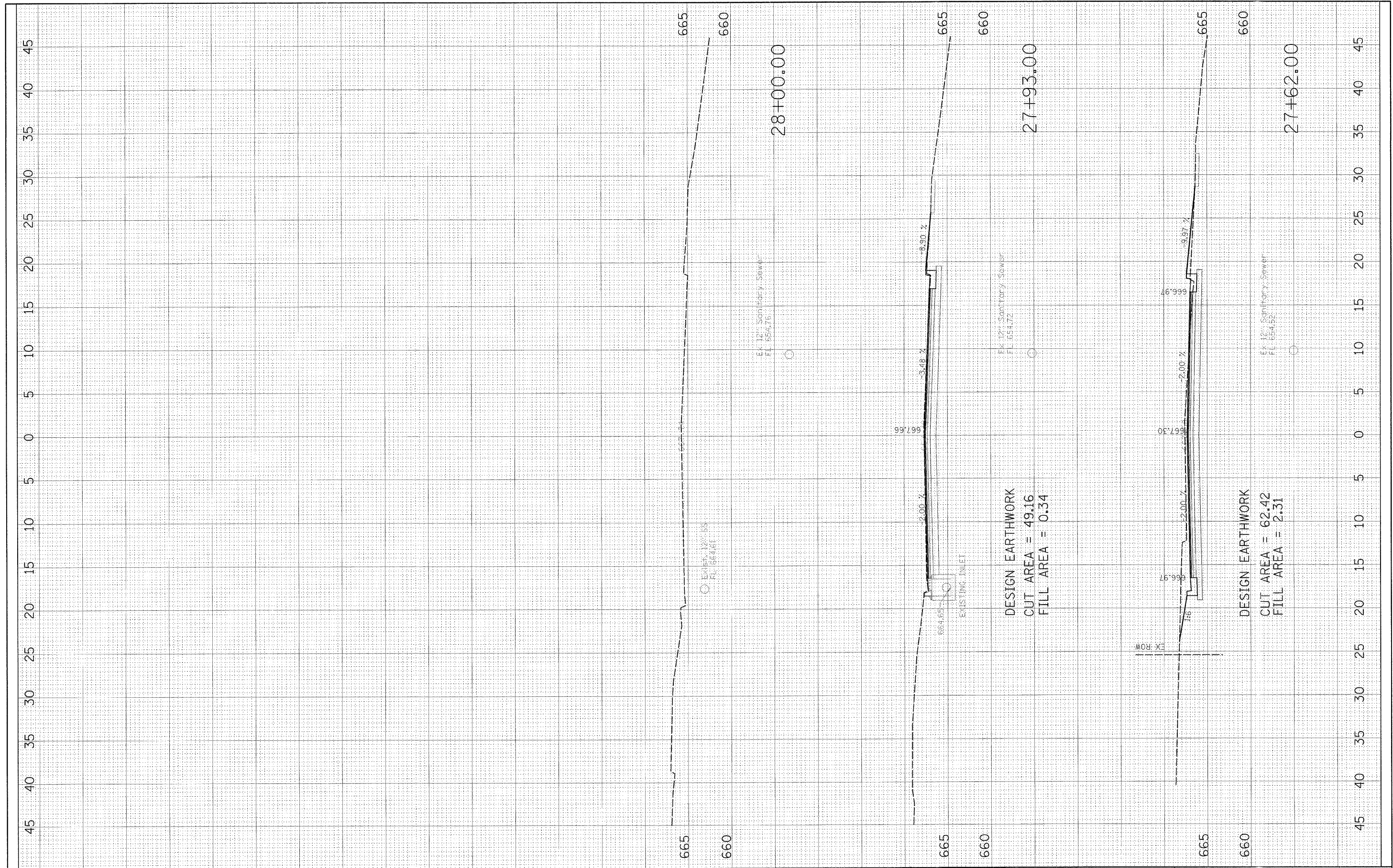
ORIGINAL SURVEY	DATE
BY	
NOTED	
PLOTTED	
TEMPLATE	
AREAS CHECKED	
NO.	



FILE NAME =	USER NAME = #USER#	DESIGNED -	REVISED -	WILLETT, HOFMANN & ASSOCIATES, INC CONSULTING ENGINEERS DIXON, IL	BOYD STREET - CROSS SECTIONS		F.A. RTE.	SECTION	COUNTY	TOTAL SHEETS	SHEET NO.
#FILE#		DRAWN -	REVISED -		SCALE: _____	SHEET NO. ___ OF ___ SHEETS	5482	07-00171-00-FP	LEE	25	20
S:\Trans\1050D07 \xsBOYDSHEETS.dgn	PLOT SCALE = #SCALE#	CHECKED -	REVISED -		STA. 25+50.00 TO STA. 27+50.00		CONTRACT NO. 85429				
	PLOT DATE = #DATE#	DATE -	REVISED -		FED. ROAD DIST. NO. [ILLINOIS] FED. AID PROJECT						

FINAL SUPPLY	SAMPLED PLOT(D)	DATE
NOTE BOOK	TEMPLATE	BY
AREAS CHECKED	AREAS CHECKED	

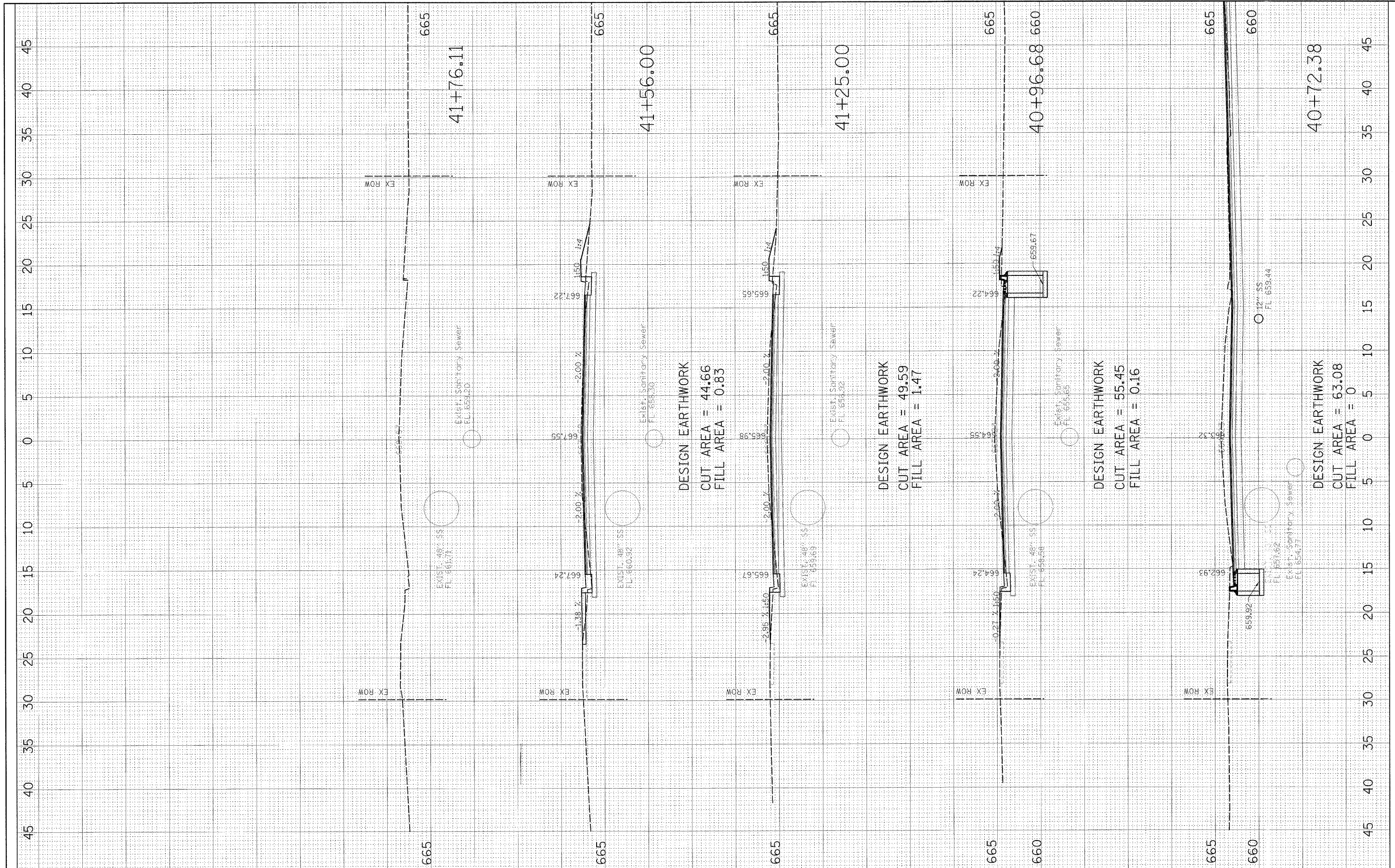
ORIGINAL SURVEY	REPLACED PLOT(D)	DATE
NOTE BOOK	TEMPLATE	BY
AREAS CHECKED	AREAS CHECKED	



FILE NAME = S:\Trans\1050D07 \xs80YDSHEETS.dgn	USER NAME = *USER*	DESIGNED - DRAWN - CHECKED - DATE -	REVISED - REVISED - REVISED - REVISED -	WILLETT, HOFMANN & ASSOCIATES, INC CONSULTING ENGINEERS DIXON, IL	BOYD STREET - CROSS SECTIONS		F.A. RTE. 5482	SECTION 07-00171-00-FP	COUNTY LEE	TOTAL SHEETS 25	SHEET NO. 21
	PLOT SCALE = *SCALE*	DATE			SCALE: _____	SHEET NO. ___ OF ___ SHEETS	STA. 27+62.00 TO STA. 28+00.00	CONTRACT NO. 85429			

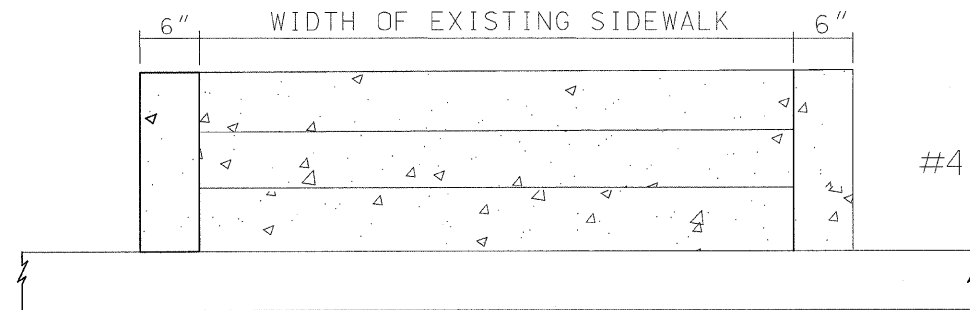
FINAL SURVEY	DATE
NOTED	BY
PLOTTED	
TEMPLATE	
AREAS CHECKED	
NO.	

ORIGINAL SURVEY	DATE
NOTED	BY
PLOTTED	
TEMPLATE	
AREAS CHECKED	
NO.	

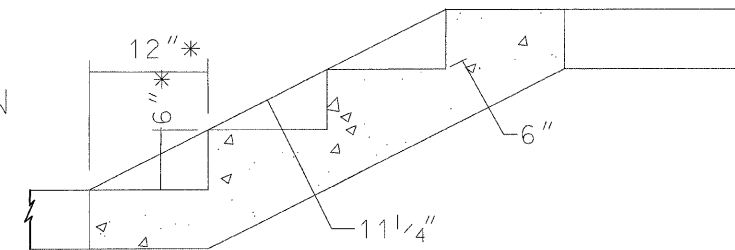


FILE NAME =	USER NAME = #USER#	DESIGNED -	REVISED -	WILLET, HOFMANN & ASSOCIATES, INC CONSULTING ENGINEERS DIXON, IL	DEMENT AVENUE - CROSS SECTIONS			F.A. RTE. 5482	SECTION 07-00171-00-FP	COUNTY LEE	TOTAL SHEETS 25	SHEET NO. 22
#FILEL#	PLOT SCALE = #SCALE#	DRAWN -	REVISED -		SCALE: _____	SHEET NO. ___ OF ___ SHEETS	STA. 40+72.38 TO STA. 41+76.11	FED. ROAD DIST. NO. _____	ILLINOIS FED. AID PROJECT	CONTRACT NO. 85429		
S:\Trans\1050007\ xsDEMMENTSHEETS.dgn	PLOT DATE = #DATE#	CHECKED -	REVISED -									
		DATE -	REVISED -									

F.A. RTE. 5482	SECTION 07-00171-00-FP	COUNTY LEE	TOTAL SHEETS .25	SHEET NO. .23
FED. ROAD DIST. NO.			ILLINOIS FED. AID PROJECT	
			CONTRACT NO. 85429	



#4 BARS AS SHOWN



* STEPS AT STA. RT 23+90.67 AND 24+59.54
HAVE A DIFFERENT RISE AND RUN.
SEE SHEET #6 FOR DIMENSIONS.

CONCRETE QUANTITY (CUBIC YARD)

NO. OF STEPS	2' WIDE	3' WIDE	4' WIDE	5' WIDE
1	0.17	0.22	0.27	0.32
2	0.28	0.36	0.44	0.53
3	0.39	0.51	0.62	0.73
4	0.51	0.65	0.8	0.94
5	0.62	0.8	0.97	1.15
6	0.73	0.94	1.15	1.35
7	0.85	1.08	1.32	1.56
8	0.96	1.23	1.5	1.77
9	1.07	1.37	1.68	1.98
10	1.19	1.52	1.85	2.18

CONCRETE STEPS WILL BE PAID FOR AT THE CONTRACT UNIT PRICE PER CUBIC YARD FOR CONCRETE STEPS WHICH PRICE SHALL INCLUDE THE COST OF FURNISHING AND INSTALLING THE REINFORCEMENT

CONCRETE STEPS

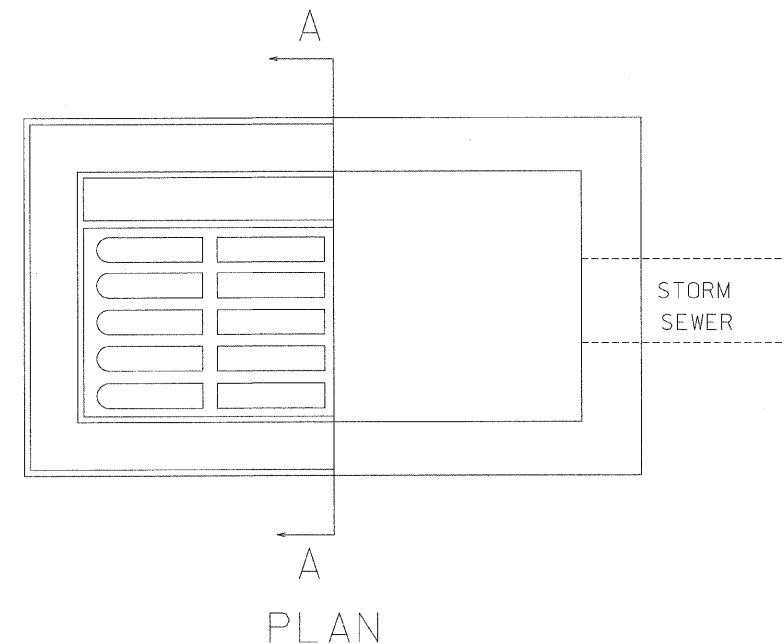
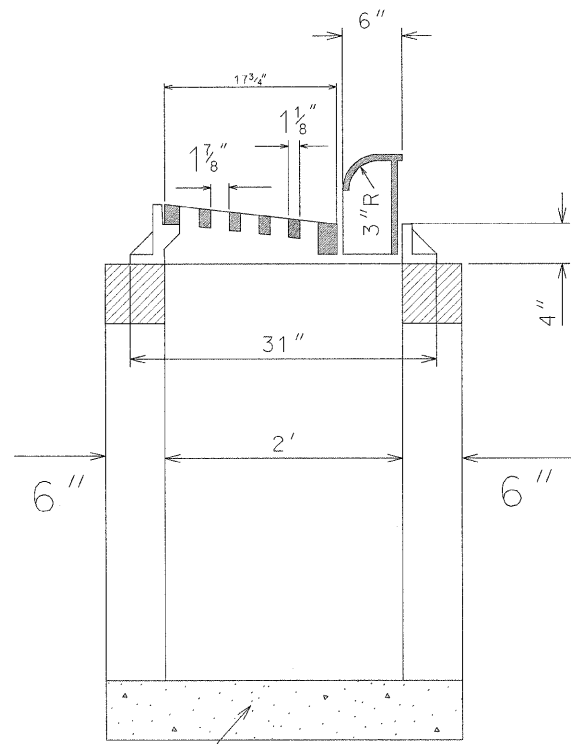
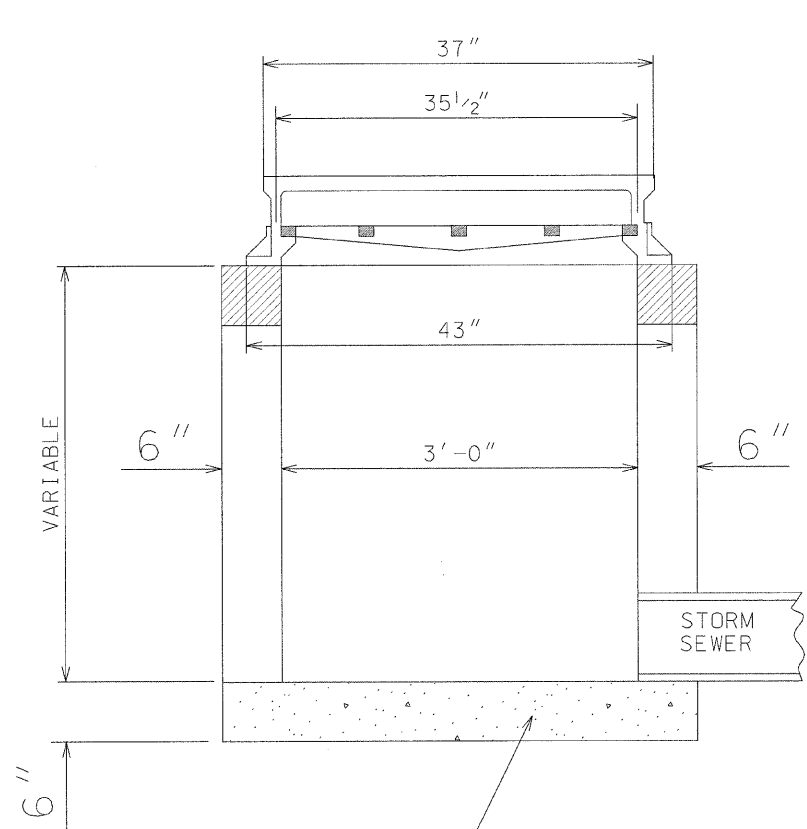
STANDARD: WHA 204



809 East Second Street Dixon, Illinois 61021
Phone 815.284.3381 Fax 815.284.3385
Design Firm #184-000918
www.willetthofmann.com

F.A. RTE.	SECTION	COUNTY	TOTAL SHEETS	SHEET NO.
5482	07-00171-00-FP	LEE	25	24
CONTRACT NO.			85429	
FED. ROAD DIST. NO. ILLINOIS FED. AID PROJECT				

INLETS, SPECIAL



6" CLASS SI CONCRETE OR
4" PRECAST REINF. CONC.
SLAB ON 3" SAND CUSHION

LONGITUDINAL SECTION

SECTION A-A

NOTES:

THE INLET SHALL BE CAST IN PLACE OR PRECAST, EXCEPT AS NOTED HERE, ON INLET SPECIAL SHALL BE CONSTRUCTED IN ACCORDANCE WITH SECTION 602 OF THE STANDARD SPECIFICATIONS. THE CONTRACT UNIT PRICE EACH FOR INLETS, SPECIAL SHALL INCLUDE THE COST OF FURNISHING AND INSTALLING THE INLET WITH SAND CUSHION IF REQUIRED. CLASS SI CONCRETE OR PRECAST CONCRETE SHALL BE USED THROUGHOUT. THE SIDEWALLS MAY BE BUILT AS PRECAST SEGMENTAL SECTIONS. THE HEIGHT OF THE BOX MAY BE CONSTRUCTED 6" SHORT TO ALLOW FOR FIELD ADJUSTMENTS. THE WALL ADJUSTMENTS SHALL BE MADE WITH CONCRETE BUILDING BRICK OR CLASS SI CONCRETE. FRAME AND GRATE TO WEIGHT APPROXIMATELY 525 LBS. (NEENAH R-3246 W/TYPE C GRATE OR EQUAL)

INLETS, SPECIAL

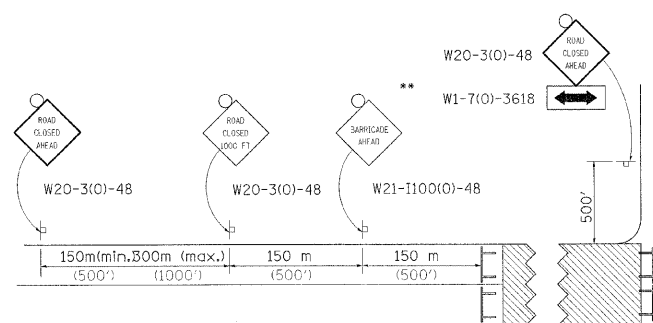
STANDARD: WHA 630



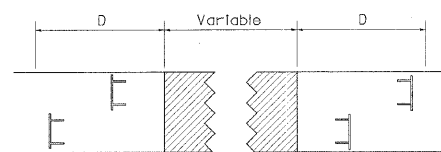
Land Surveying - Transportation - Structural
Environmental - Architecture
809 East Second Street Dixon, Illinois 61021
Phone 815.284.3381 Fax 815.284.3385
Design Firm #184-000918
www.willetthofmann.com

F.A. RTE.	SECTION	COUNTY	TOTAL SHEETS	SHEET NO.
5482	07-00171-00-FP	LEE	25	25
CONTRACT NO. 85429				
FED. ROAD DIST. NO. ILLINOIS FED. AID PROJECT				

TRAFFIC CONTROL FOR ROAD CLOSURE



ROAD CLOSED TO THRU TRAFFIC BARRICADE SET UP

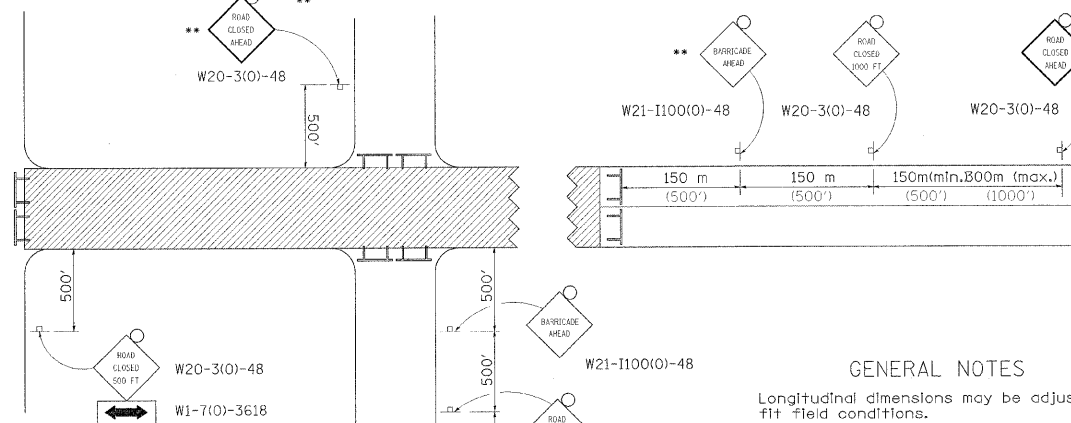


Type III Barricades and R11-4-4830 signs shall be as shown in "Road Closed To All Thru Traffic" detail on Highway Standard 701901. If the distance "D" exceeds 600 m (2000') an additional set of barricades and R11-4-4830 shall be placed at each end of the work area.

PLT DATE • WATER
 PLS NAME • WILLET
 REFERENCE • SHEET

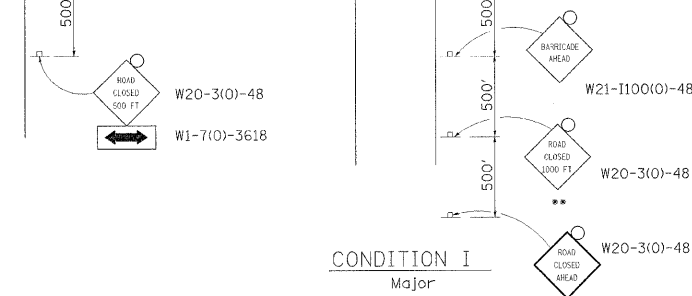
CONDITION II

Minor Sideroad Closure



CONDITION I

Major Sideroad Closure



SYMBOLS

- Work area
- Type III Barricade with Flashers
- Sign with flashing light

GENERAL NOTES

Longitudinal dimensions may be adjusted to fit field conditions.

When speed limit is less than 45mph, change sign spacing to 250' and change ROAD CLOSED 1000 FT to ROAD CLOSED 500 FT.

Side roads requiring all three signs as shown in CONDITION I (Major Sideroad Closure), shall be listed in the special provision.

** Where local access is to be maintained, barricades are to be set up as shown in Road Closed to thru traffic.

Type III Barricades and R11-2-4830 signs shall be as shown in "Road Closed To All Traffic" detail on Highway Standard 701901.

All dimensions are in millimeters (inches) unless otherwise shown.

TYPICAL APPLICATION FOR ROAD CLOSURE

TRAFFIC CONTROL FOR ROAD CLOSURE 40.1

REVISED 10-20-04