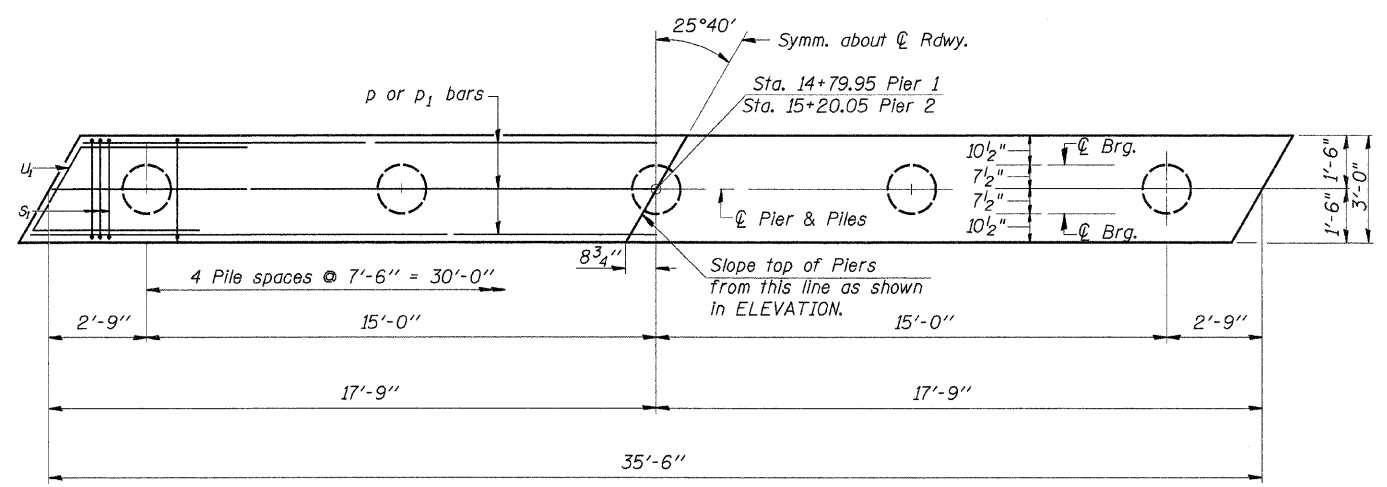
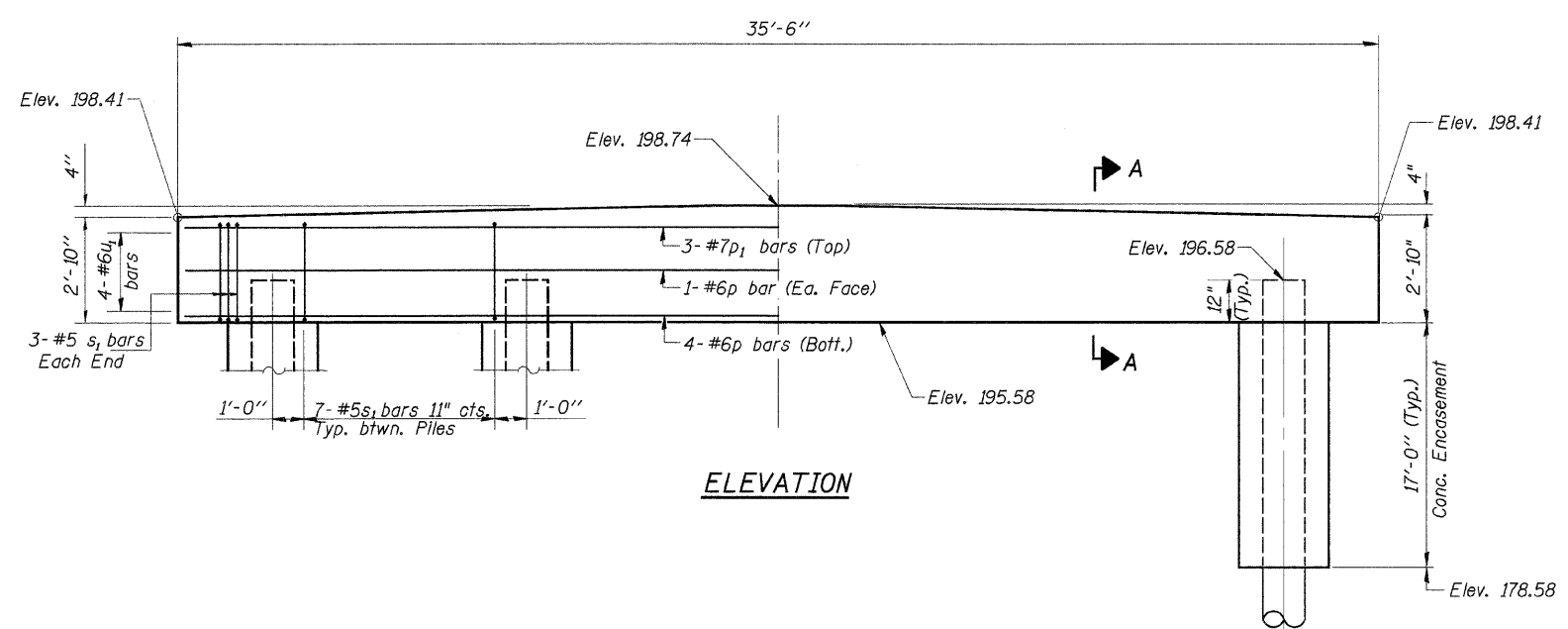


Note: All edges shall have standard 3/4" chamfer



PLAN

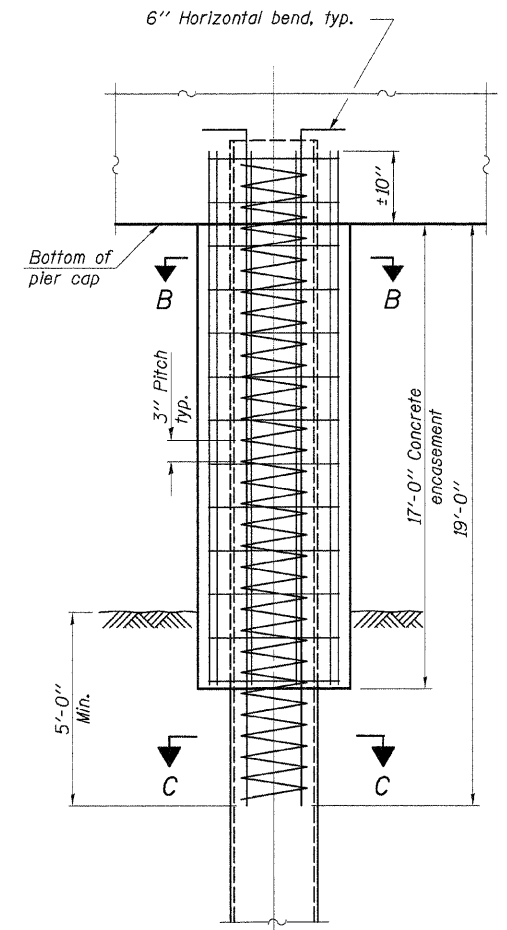


ELEVATION

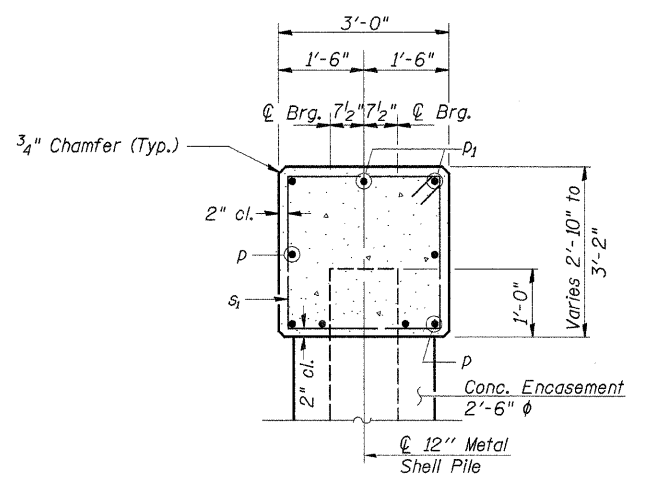
PILE DATA

Type & Size.....Metal Shell - 12 in. dia. x 0.250 in. walls
 No. Req'd.....10*
 Nominal Required Bearing.....270 kips
 Allowable Resistance Available.....90 kips
 Estimated Length.....63 ft.

*Includes 1 Test Pile to be driven in a permanent location at the pier 2.
 The test piles shall be driven to 110 percent of the Nominal Required Bearing Indicated above.



CONCRETE ENCASEMENT

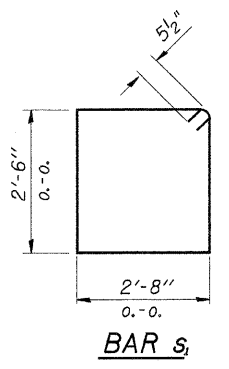


SECTION A-A
 @ Rt. L's

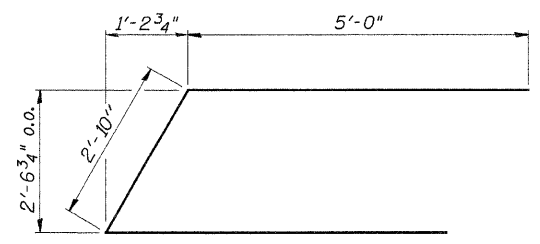
BILL OF MATERIAL - 2 PIERS

BAR	NO.	SIZE	LENGTH	SHAPE
p	12	#6	35'-2"	—
p ₁	6	#7	35'-2"	—
s ₁	68	#5	11'-3"	□
u ₁	16	#6	12'-10"	▤
Concrete Structures			Cu. Yd.	23.4
Reinforcement Bars			Pound	2,170
Metal Shell Piles 12"			Foot	567
Test Pile Metal Shells			Each	1
Conc. Encasement			Cu. Yd.	26.0

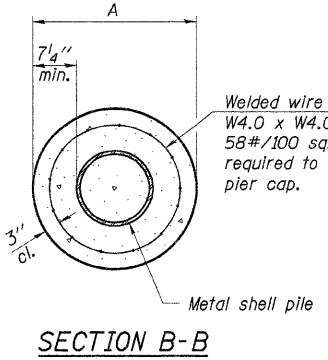
See Sheet 11 for Metal Pile Shell Details.



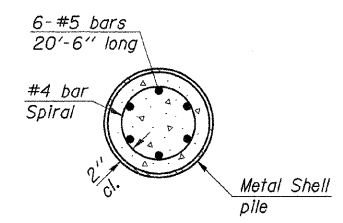
BAR s₁



BAR u₁



SECTION B-B



SECTION C-C

Notes:
 See Metal Shell Pile Table for dimension "A".

DESIGNED	F.J.S.
CHECKED	S.F.M.
DRAWN	S.A.P.
CHECKED	F.J.S.

PIERS
 SECTION 06-03122-00-BR
 ASHKUM ROAD DISTRICT
 IROQUOIS COUNTY
 STATION 15+00

4440 ASH GROVE SPRINGFIELD, IL. 62711 (217) 793-8800 www.fehr-graham.com	FEHR-GRAHAM & ASSOCIATES, LLC ENGINEERING AND SCIENCE CONSULTANTS <small>RESPONSE, REPAIRS & RECONSTRUCTION SERVICES IN SPRINGFIELD, IL.</small>	JOB NO.: 46864 FILE: 46864PIER.dgn DATE: 11/08/07
---	---	---