

STATE OF ILLINOIS
DEPARTMENT OF TRANSPORTATION

FAS 214	*	MERCER	16	1
STA. 68+80	TO	STA. 72+00		
FED. ROAD DIST. NO. 7	ILLINOIS			

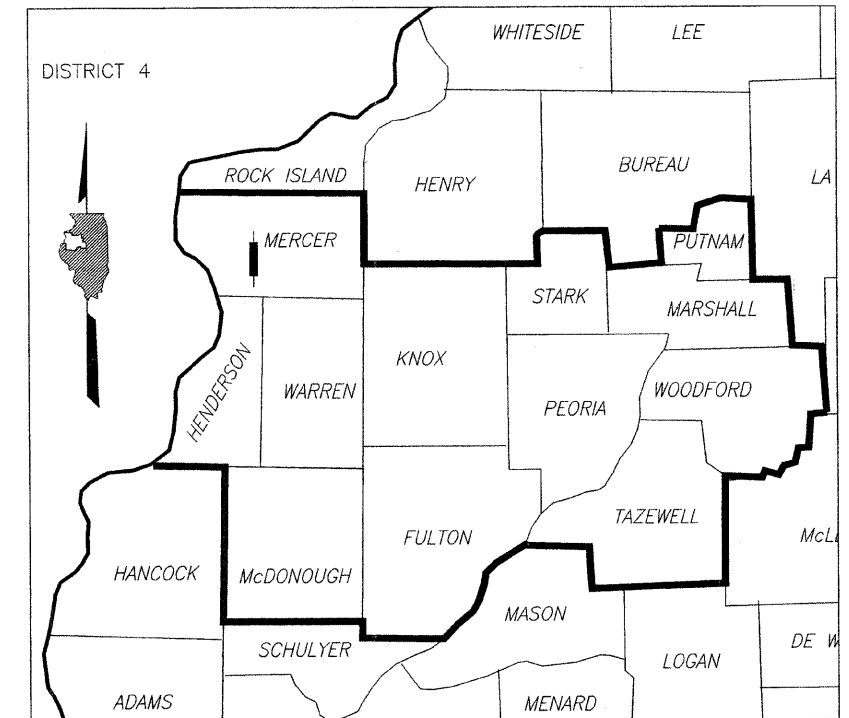
*05-00023-02-BR CONTRACT NO. 89387

PLANS FOR
PROPOSED LOCAL AGENCY IMPROVEMENT
FEDERAL-AID HBRRP PROJECT

F.A.S 214 (C.H.13)
SECTION 05-00023-02-BR MERCER COUNTY
PROJECT BHS-0214(110)
ABINGTON TOWNSHIP
JOB NO. C-94-002-06

INDEX OF SHEETS	
SHEET NO.	DESCRIPTION
1	COVER SHEET
2	GENERAL NOTES, SUMMARY AND SCHEDULE OF QUANTITIES
3	TYPICAL SECTIONS AND DETAILS
4	PLAN AND PROFILE
5	ROADWAY CROSS SECTIONS
6	CHANNEL CROSS SECTIONS
7	GENERAL BRIDGE PLAN AND ELEVATION
8	DECK BEAM DETAILS (29'-6" SPAN)
9	DECK BEAM DETAILS (60'-0" SPAN)
10	ABUTMENT DETAILS
11	WALL PIER DETAILS
12	STEEL RAILING DETAILS, TYPE SM (SPECIAL)
13	STEEL RAILING DETAILS, TYPE SM (SPECIAL)
14	PILE DETAILS
15-16	SOIL BORING LOGS

PLAN	1 INCH = 20 FEET	
PROFILE HORIZONTAL	1 INCH = 20 FEET	
PROFILE VERTICAL	1 INCH = 20 FEET	
CROSS SECTION HORIZ.	1 INCH = 10 FEET	
CROSS SECTION VERT.	1 INCH = 10 FEET	



LOCATION OF SECTION INDICATED THUS:

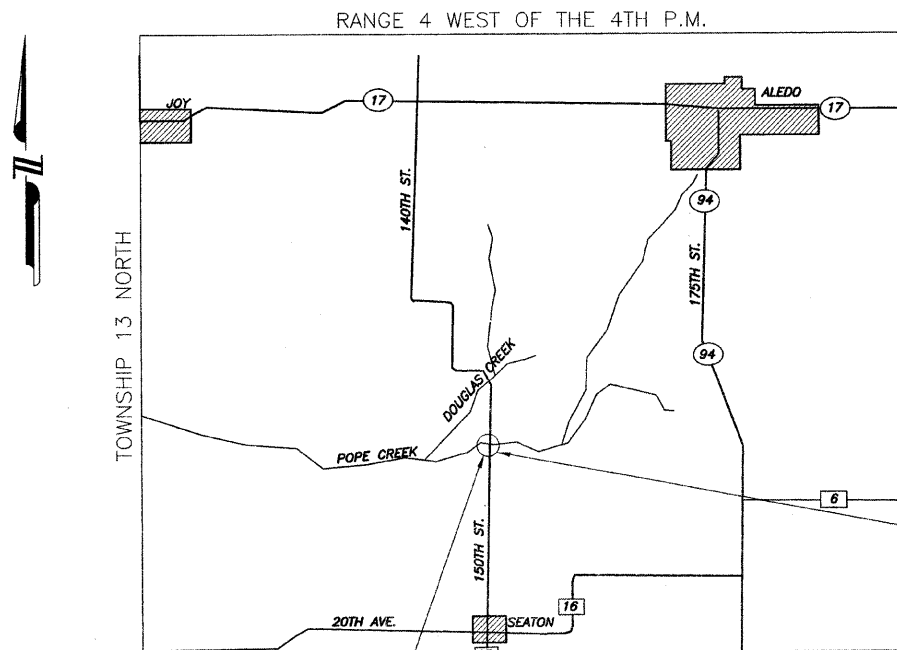
LIST OF STANDARDS

- STANDARD 280001-04 TEMPORARY EROSION CONTROL SYSTEMS
- STANDARD 515001-02 NAME PLATE
- STANDARD 701006-02 OFF - ROAD OPERATIONS, 2 - LANE, 2 - WAY, 15' TO 24" FROM PAVEMENT EDGE
- STANDARD 701301-02 LANE CLOSURE, 2 - LANE, 2 - WAY, SHORT TIME OPERATIONS
- STANDARD 701901 TRAFFIC CONTROL DEVICES
- STANDARD BLR 21-7 TYPICAL APPLICATION OF TRAFFIC CONTROL DEVICES FOR CONSTRUCTION ON RURAL LOCAL HIGHWAYS
- STANDARD BLR-26 STEEL PLATE BEAM GUARDRAIL
- STANDARD BLR-27 TRAFFIC BARRIER TERMINAL, TYPE 5A

CONTRACT NO. 89387

DESIGN DESIGNATION

HIGHWAY CLASS: LOCAL ROAD
DESIGN SPEED: 40 M.P.H.
ADT = 200
DESIGN GUIDELINES: RURAL
COMMITMENTS: NONE
VARIANCES GRANTED: NONE



LOCATION OF THE PROPOSED IMPROVEMENT
PROPOSED IMPROVEMENT BEGINS STA. 68+80
PROPOSED IMPROVEMENT ENDS STA. 72+00

LOCATION MAP

TOTAL LENGTH OF PROJECT = 320 FT.
NET LENGTH OF PROJECT = 320 FT. (0.061 MI.)

EXISTING STRUCTURE No. 066-3040:
THREE SPAN PRECAST, PRESTRESSED CONCRETE DECK BEAM BRIDGE ON PILE BENT ABUTMENTS AND PIERS.
THE OVERALL STRUCTURE LENGTH FROM BACK TO BACK OF ABUTMENTS IS 136'-6".

PROPOSED STRUCTURE No. 066-3043:
THREE SPAN PRECAST, PRESTRESSED CONCRETE DECK BEAMS ON SPILL-THRU PILE BENT ABUTMENTS AND PIERS AT STA 70+40.

I HEREBY CERTIFY THAT THIS ENGINEERING DOCUMENT WAS PREPARED BY ME OR UNDER MY DIRECT SUPERVISION AND THAT I AM A DULY LICENSED PROFESSIONAL ENGINEER UNDER THE LAWS OF THE STATE OF ILLINOIS.

John B. Fellman 1-31-2008
JOHN B. FELLMAN DATE
LICENSE EXPIRES 11-30-2009



MSA JOB No: A05X018

WARNING



CALL BEFORE YOU DIG

STATE OF ILLINOIS
DEPARTMENT OF TRANSPORTATION
DIVISION OF HIGHWAYS

APPROVED *Jan 29* 20 08
D. Fellman
MERCER COUNTY ENGINEER

PASSED 2-8 20 08
Derek C. Pomeroy
DISTRICT 4 ENGINEER OF LOCAL ROADS & STREETS

RELEASING FOR BID
BASED ON LIMITED REVIEW 2-11 20 08
J.E. Ames
DEPUTY DIRECTOR OF HIGHWAYS, REGION 3 ENGINEER