

**GENERAL NOTES**

ALL CONSTRUCTION SHALL BE IN ACCORDANCE WITH THE ILLINOIS DEPARTMENT OF TRANSPORTATION STANDARD SPECIFICATIONS FOR ROAD AND BRIDGE CONSTRUCTION, LATEST EDITION.

ALL EXISTING UTILITIES SHOWN ON PLANS ARE APPROXIMATE AND EXACT LOCATIONS AND DEPTHS SHALL BE DETERMINED BY THE CONTRACTOR PRIOR TO CONSTRUCTION. CALL JULIE 1-800-892-0123 48 HRS MIN. PRIOR TO CONSTRUCTION.

THE CONTRACTOR SHALL BE RESPONSIBLE FOR THE PROTECTION OF ALL UNDERGROUND OR SURFACE UTILITIES EVEN THOUGH THEY MAY NOT BE SHOWN ON THE PLANS. ANY UTILITY THAT IS DAMAGED BY THE CONTRACTOR DURING CONSTRUCTION SHALL BE REPAIRED OR REPLACED TO THE SATISFACTION OF OWNER. SUCH WORK WILL BE AT THE CONTRACTOR'S EXPENSE.

TRENCH BACKFILL (FA-6 OR APPROVED ON-SITE MATERIAL) SHALL BE PLACED IN ALL TRENCHES UNDER PAVEMENT AND WITHIN 2' OF THE BACK OF CURB AND SHALL BE COMPACTED TO 95 PERCENT OF STANDARD PROCTOR. THIS WORK SHALL BE INCIDENTAL TO STORM SEWER, TY. 1 RCP CL IV.

DURING CONSTRUCTION OPERATIONS, WHENEVER ANY LOOSE MATERIAL IS DEPOSITED IN THE FLOW LINES OF DRAINAGE STRUCTURES SUCH THAT THE NATURAL FLOW OF WATER IS OBSTRUCTED, IT SHALL BE REMOVED AT THE CLOSE OF EACH WORKING DAY. AT THE CONCLUSION OF CONSTRUCTION, DRAINAGE AND UTILITY STRUCTURES SHALL BE FREE OF DIRT AND DEBRIS.

ALL AREAS DISTURBED BY CONSTRUCTION SHALL BE BACKFILLED AND RESURFACED TO A CONDITION EQUAL TO OR BETTER THAN THE CONDITION AS EXISTING PRIOR TO CONSTRUCTION. THIS INCLUDES YARDS, DRIVEWAYS, SIDEWALKS, ETC.

ENGINEER SHALL PROVIDE BENCHMARKS AND HORIZONTAL CONTROL. CONTRACTOR SHALL BE RESPONSIBLE FOR ALL OTHER CONSTRUCTION STAKING.

ACCESS MUST BE MAINTAINED TO ALL PROPERTIES DURING CONSTRUCTION IN ACCORDANCE WITH ARTICLE 107.09 OF THE STANDARD SPECIFICATIONS. ARRANGEMENTS WITH THE PROPERTY OWNERS FOR SHORT TERM CLOSURES MAY BE MADE BY THE CONTRACTOR.

PRIVATE AND COMMERCIAL DRIVEWAYS SHALL BE REPLACED WITH 6" P.C.C. DRIVEWAY PAVEMENT TO THE BACK OF THE SIDEWALK.

DRIVEWAYS SHALL BE REMOVED AND REPLACED TO THE LIMITS SHOWN ON THE PLANS.

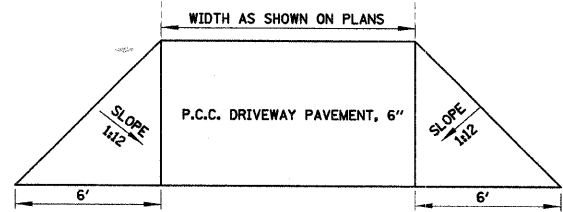
VALVE BOXES, DOMESTIC METER VAULTS AND CURB STOP SERVICE BOXES, IF NEEDED, SHALL BE ADJUSTED TO THE FINAL GRADE AS SHOWN ON THE PLANS. THIS WORK WILL NOT BE PAID FOR SEPARATELY, BUT SHALL BE INCIDENTAL TO THE CONTRACT UNIT PRICE FOR COMBINATION CONCRETE CURB AND SIDEWALK, 4".

**SUMMARY OF QUANTITIES**

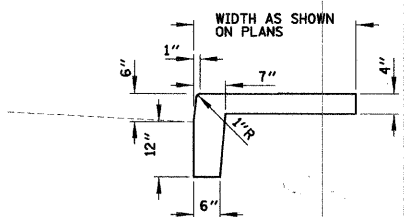
SFTY-1B

XX006497	COMBINATION CONCRETE CURB AND SIDEWALK, 4"	SQ FT	18,280
Z0062000	SAW CUTTING	FOOT	4150
20100210	TREE REMOVAL OVER 15	UNIT	48
21101615	TOPSOIL FURNISH AND PLACE, 4"	SQ YD	200
25000210	SEEDING CLASS 2A	ACRE	0.2
25100105	MULCH METHOD 1	ACRE	0.2
28000400	PERIMETER EROSION BARRIER	FOOT	1200
28000500	INLET AND PIPE PROTECTION	EACH	7
28000510	INLET FILTERS	EACH	7
40201000	AGGREGATE FOR TEMPORARY ACCESS	TON	50
42000300	PORTLAND CEMENT CONCRETE PAVEMENT, 8"	SQ YD	140
42300200	PORTLAND CEMENT CONCRETE DRIVEWAY PAVEMENT, 6"	SQ YD	725
42400100	PORTLAND CEMENT CONCRETE SIDEWALK, 4"	SQ FT	1590
42400800	DETECTABLE WARNINGS	SQ FT	254
44000100	PAVEMENT REMOVAL	SQ YD	335
44000200	DRIVEWAY PAVEMENT REMOVAL	SQ YD	512
44000500	COMBINATION CURB AND GUTTER REMOVAL	FOOT	3321
44000600	SIDEWALK REMOVAL	SQ FT	6076
44003100	MEDIAN REMOVAL	SQ FT	157
55019500	STORM SEWER, TYPE 1 R.C.P., CL. IV	FOOT	4
60241800	INLETS TYPE G-1	EACH	3
60242000	INLETS TYPE G-1 WITH SALVAGED FRAME AND GRATE	EACH	1
60260400	INLETS TO BE ADJUSTED WITH NEW TYPE 1 FR., CL. LID	EACH	2
60300305	FRAMES AND LIDS TO BE ADJUSTED	EACH	1
60500305	FILLING INLETS	EACH	2
60603800	COMBINATION CONCRETE CURB AND GUTTER, TYPE B-6.12	FOOT	226
67100100	MOBILIZATION	L. SUM	1
70101700	TRAFFIC CONTROL AND PROTECTION	LS	1
* 78000400	THERMOPLASTIC PAVEMENT MARKING LINE, 6"	FOOT	155
* 78000650	THERMOPLASTIC PAVEMENT MARKING LINE, 24"	FOOT	28
78300100	PAVEMENT MARKING REMOVAL	SQ FT	78

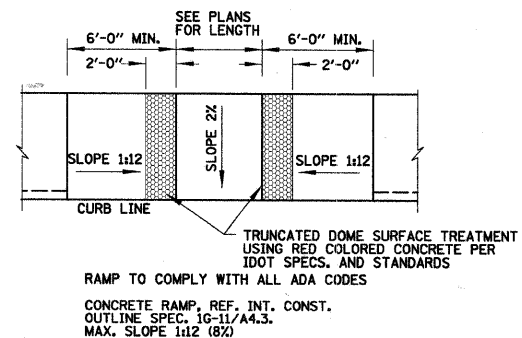
\* SPECIALTY ITEMS



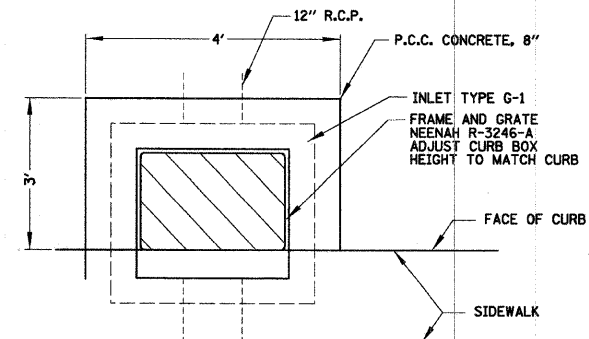
**DRIVEWAY ENTRANCE DETAIL**  
NOT TO SCALE



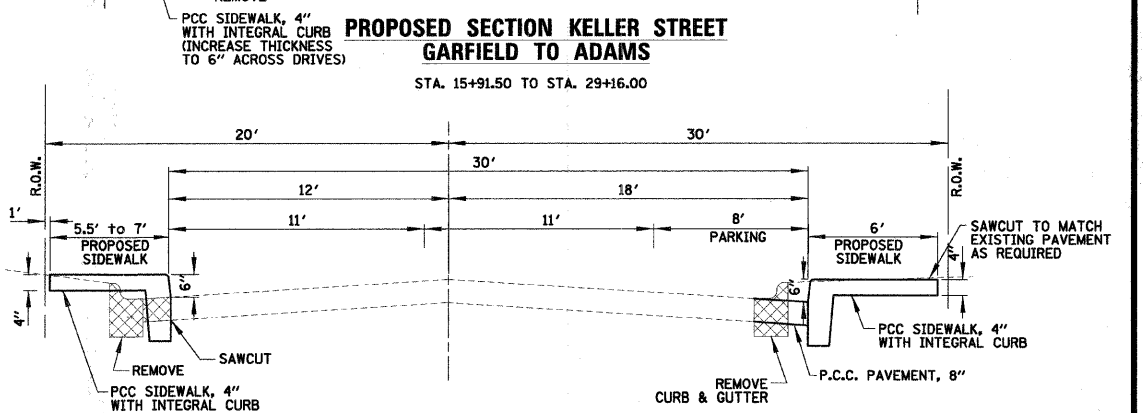
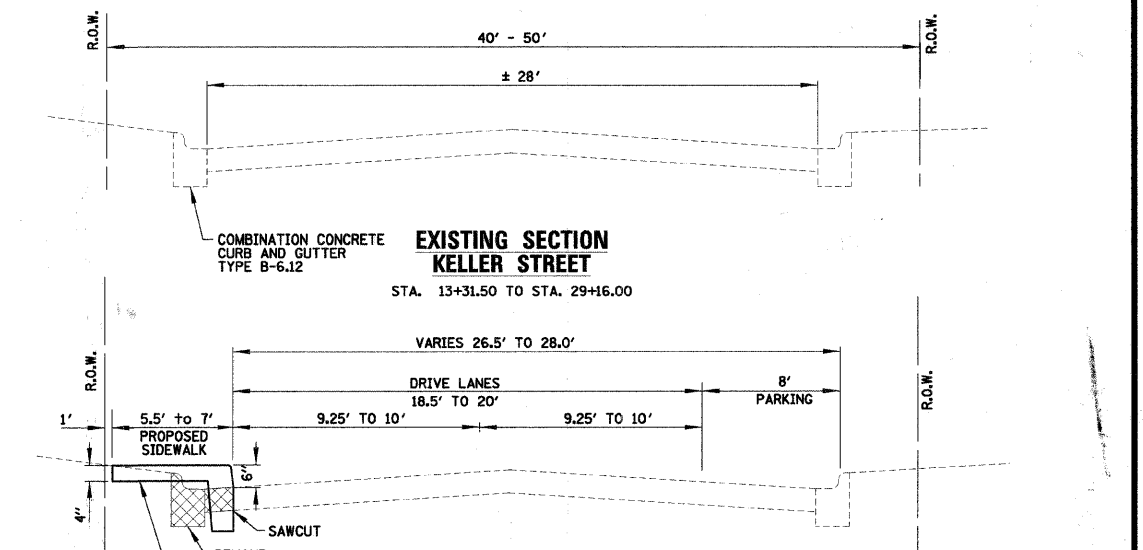
**COMB. CONC. CURB AND SIDEWALK, 4" DETAIL**  
NOT TO SCALE



**HANDICAPPED RAMP DETAIL**  
NOT TO SCALE

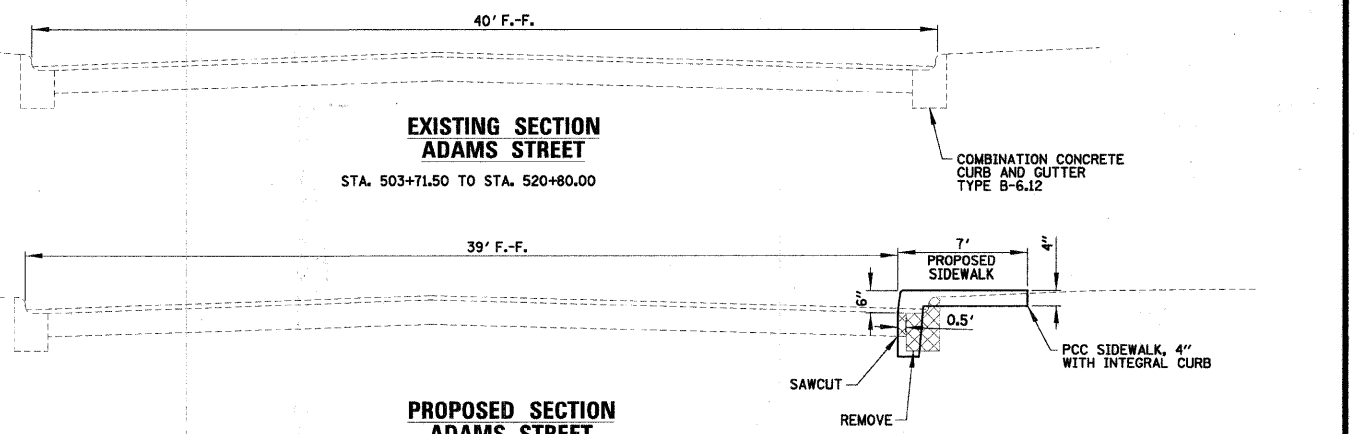


**INLET DETAIL**  
NOT TO SCALE



AS AN OPTION, CONTRACTOR MAY SAW CUT AN ADDITIONAL 6" AWAY FROM THE FACE OF PROPOSED CURB FOR FORM PLACEMENT. THIS AREA TO BE FILLED WITH 8" DEPTH CONCRETE. NO ADDITIONAL COMPENSATION WILL BE ALLOWED FOR THIS OPTION.

**PROPOSED SECTION KELLER STREET McCLURE TO GARFIELD**  
STA. 13+31.50 TO STA. 15+91.50



AS AN OPTION, CONTRACTOR MAY SAW CUT AN ADDITIONAL 6" AWAY FROM THE FACE OF PROPOSED CURB FOR FORM PLACEMENT. THIS AREA TO BE FILLED WITH 8" DEPTH CONCRETE. NO ADDITIONAL COMPENSATION WILL BE ALLOWED FOR THIS OPTION.

**PROPOSED SECTION ADAMS STREET**  
STA. 503+71.50 TO STA. 520+80.00

**CHRISTOPHER B. BURKE ENGINEERING LTD.**  
202 NE Madison Avenue, Suite 301  
Peoria, Illinois 61602  
(309) 676-9000  
Design Firm Registration # 184-001175

CLIENT: **VILLAGE OF BARTONVILLE**

NO.	DATE	NATURE OF REVISION	CHKD.
FILE NAME	P:\05760\CIVIL\05760-01.s04		

PROJECT NO. 05-760  
SHEET 2 OF 15  
DRAWING NO. S00-1

DSGN. DAW  
DWN. LTW  
CHKD. DAW  
SCALE: 1'  
DATE: 2/5/2008  
PLOT DATE: 2/5/2008

TITLE: **GENERAL NOTES, TYPICAL SECTION, MISC. DETAILS & SUMMARY OF QUANTITIES BARTONVILLE SIDEWALK IMPROVEMENTS**