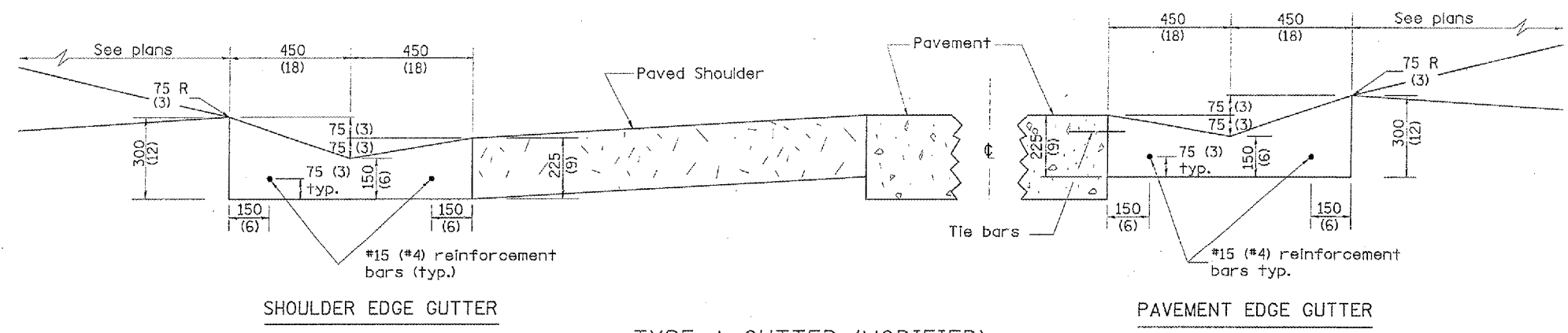
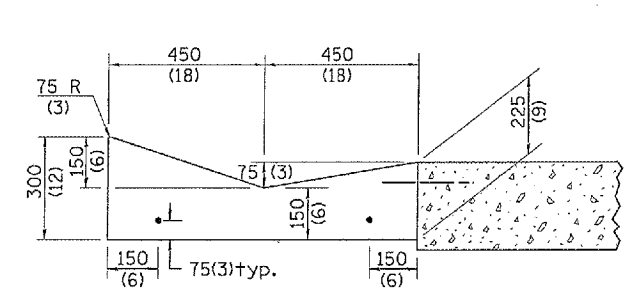


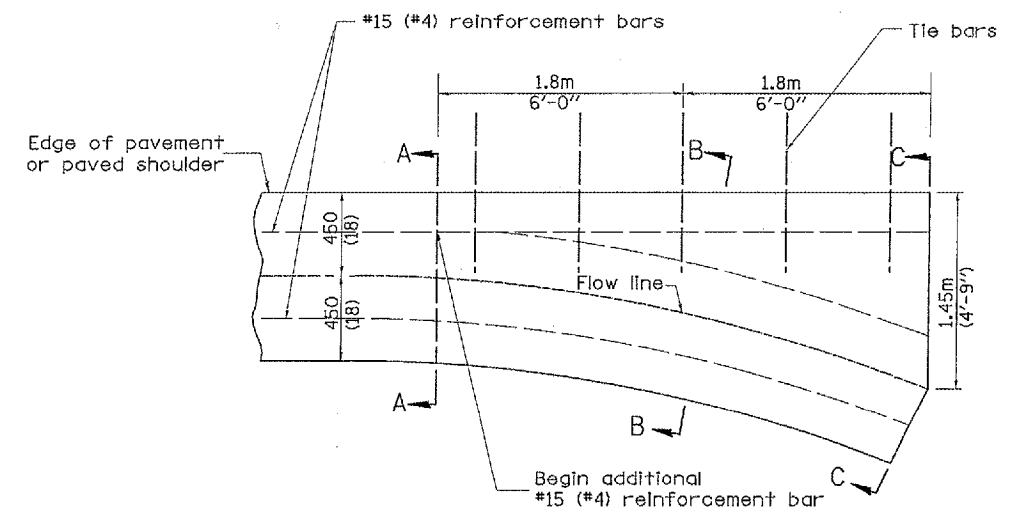
F.A. RTE.	SECTION	COUNTY	TOTAL SHEETS	SHEET NO.
464	07-00014-00-SP	TAZEWELL	44	26
ILLINOIS CONTRACT NO.			89480	



TYPE A GUTTER (MODIFIED)

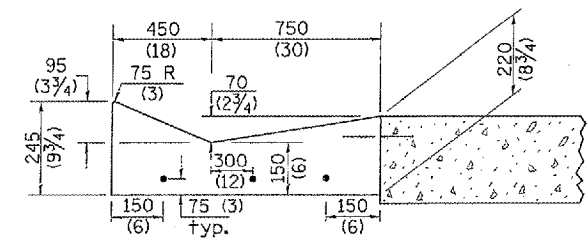


SECTION A-A

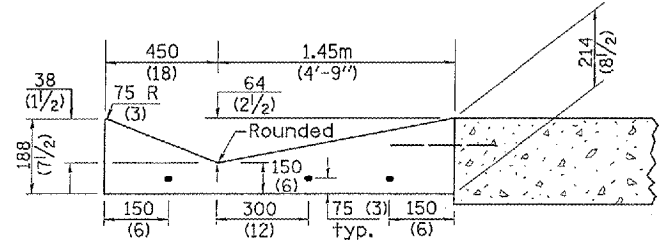


PLAN

QUANTITY  
Section C-C to A-A  
m<sup>3</sup> ( cu. yd.) concrete.



SECTION B-B



SECTION C-C

INLET

GENERAL NOTES:

- TYPE A GUTTER (MODIFIED) shall conform to the applicable portions of Section 606.
- Tie bars shall be No. 20 (No. 6) at 600mm (24") centers unless otherwise shown.
- Gutter, gutter inlets, gutter outlets, and gutter entrances shall be tied to rigid pavement in accordance with details shown on Standard 420001.
- Joints shall be constructed in accordance with Article 606.06.
- Welded wire fabric shall conform to Article 1006.10(c)(1), and shall not be less than 2.83 kg/m<sup>2</sup> (58 lbs/100 sq.ft.).

DESIGNER NOTE:  
1. INCLUDE STATE STANDARD 420001.  
2. INCLUDE DISTRICT SPECIAL PROVISION.

QUANTITIES	
CALC. BY:	DATE:
CHECKED BY:	DATE:
QUANTITY CALCULATIONS ARE ON FILE AT THE DISTRICT 4 OFFICE; BUREAU OF PROJECT IMPLEMENTATION; DOCUMENTATION SECTION	

All dimensions are in millimeters (inches) unless otherwise noted.

ILLINOIS DEPARTMENT OF TRANSPORTATION		
DISTRICT CADD STANDARD		
TYPE A GUTTER, (MODIFIED)		
(INLET, OUTLET & ENTRANCE)		
CADD STANDARD 606101-D4	SHEET 1 OF 3	
SCALE: NOT DRAWN TO SCALE	DRAWN BY CADD	
DATE: **DATE**	CHECKED BY	

DATE	REVISIONS	BY
1-1-97	RENJ.M. A-1.02, NEW REVISION BOX, ELIMINATED EXPANSION ANCHOR TIES.	T.P.