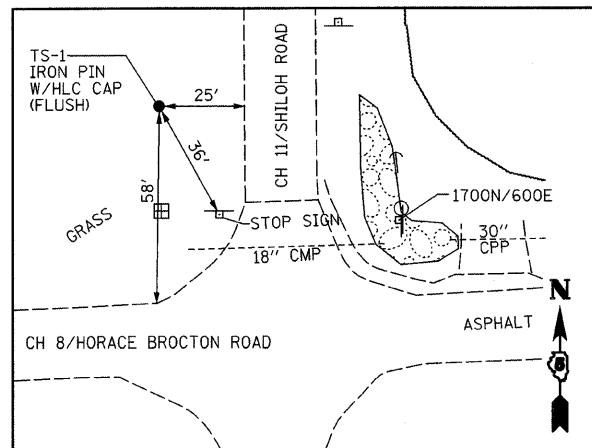
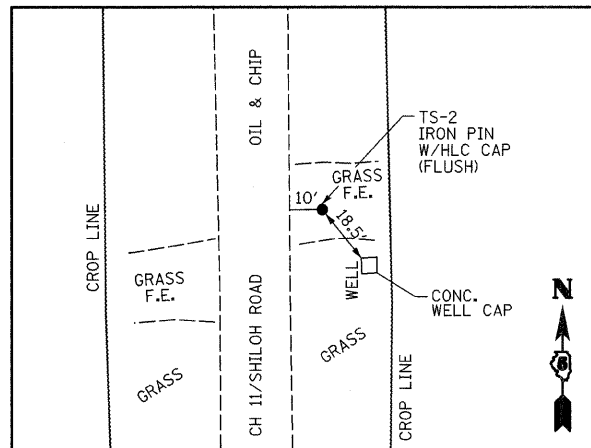


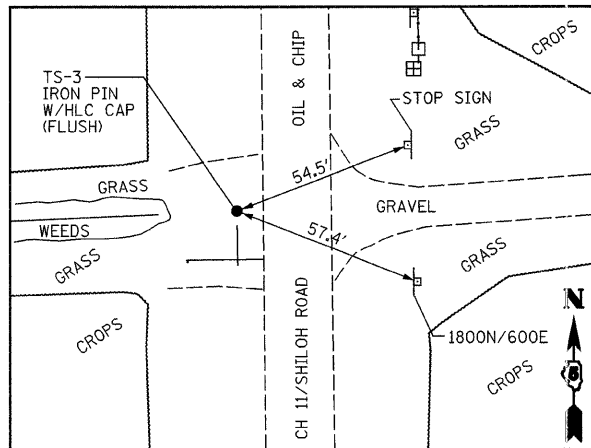
ROUTE NO.	SECTION	COUNTY	TOTAL SHEETS	SHEET NO.
CH 11	*	EDGAR	160	40
FED. ROAD DIST. NO. 5			ILLINOIS	PROJECT
* 05-00092-01-PV				



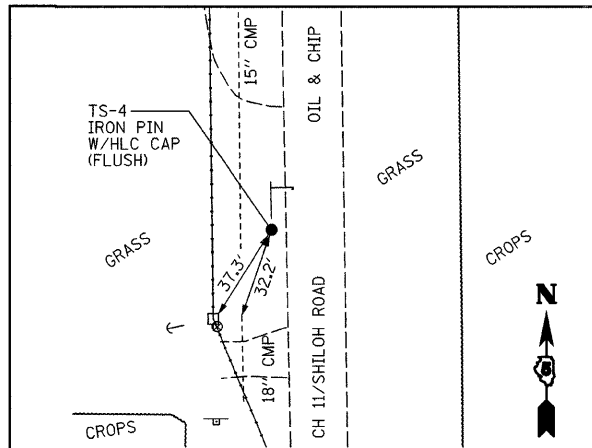
TS - 1
 STA 10+67.09
 O/S 36.66' LT
 N 1,111,351.274
 E 1,118,914.277
 ELEV 670.63



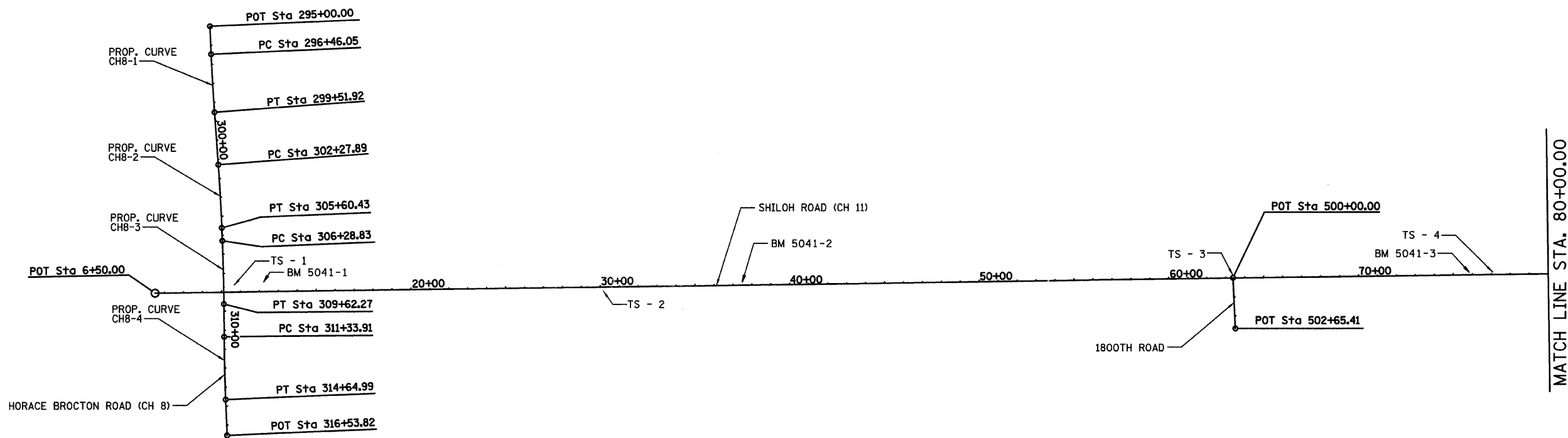
TS - 2
 STA 30+15.38
 O/S 19.91' RT
 N 1,113,300.138
 E 1,118,945.575
 ELEV 678.58



TS - 3
 STA 63+37.59
 O/S 15.64' LT
 N 1,116,621.609
 E 1,118,866.944
 ELEV 671.82



TS - 4
 STA 77+07.24
 O/S 13.98' LT
 N 1,117,991.164
 E 1,118,850.844
 ELEV 666.93



BM#	STA	O/S	ELEV	DESCRIPTION
5041-1	12+24	51.0' LT	672.14	CHISELED SQUARE NORTHEAST CORNER CONCRETE FOUNDATION FOR GRAIN DRIER, 2ND GRAIN BIN NORTH OF CH 8 ON WEST SIDE OF CH 11.
5041-2	37+50	17.5' LT	670.55	CHISELED SQUARE ON WEST HEADWALL OF 30\"/>
5041-3	75+84	14.0' LT	677.78	CHISELED SQUARE ON NORTH END OF WEST HEADWALL OF BOX CULVERT UNDER CH 11, 1.2 MILES NORTH OF CH 8.

PROP. CURVE	PI STA.	Δ	D	R	T	L	E	e	P.C. STA.	P.T. STA.
CH8-1	297+99.00	1° 40' 09" (LT)	0° 32' 44"	10,500.00'	152.95'	305.87'	1.11'	NC	296+46.05	299+51.92
CH8-2	303+94.17	1° 48' 52" (RT)	0° 32' 44"	10,500.00'	166.28'	332.54'	1.32'	NC	302+27.89	305+60.43
CH8-3	307+95.56	1° 49' 10" (RT)	0° 32' 44"	10,500.00'	166.73'	333.44'	1.32'	NC	306+28.83	309+62.27
CH8-4	312+99.46	1° 48' 24" (LT)	0° 32' 44"	10,500.00'	165.55'	331.08'	1.31'	NC	311+33.91	314+64.99

REVISIONS			SHILOH ROAD (CH 11) EDGAR COUNTY, ILLINOIS		DRWN BY DATE
No.	DATE	INITIALS			RLK 7/07
1					CHECKED BY DATE
2					CAS 7/07
3					BOOK NUMBER
4					469
5					PROJECT NO.
6					5245
7					BOOK NUMBER
8					469
9					PROJECT NO.
10					5245

HOMER L. CHASTAIN & ASSOCIATES, LLP
 CONSULTING ENGINEERS
 184-001977
 DECATUR CHICAGO (317) 422-8544 (773) 714-0050
 ROCKFORD (815) 489-0050

