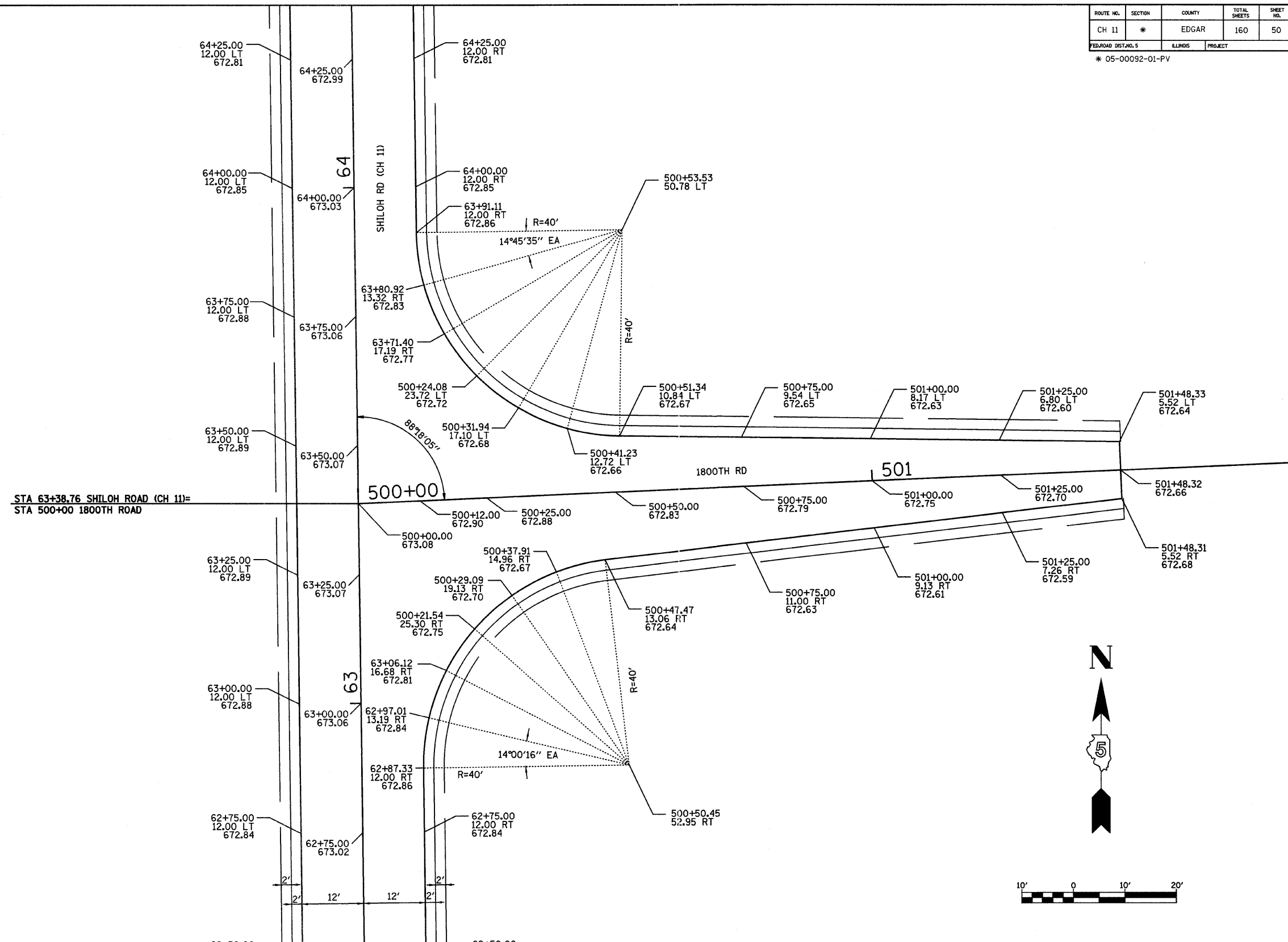


ROUTE NO.	SECTION	COUNTY	TOTAL SHEETS	SHEET NO.
CH 11	*	EDGAR	160	50

FED. ROAD DIST. NO. 5 ILLINOIS PROJECT

\* 05-00092-01-PV



STA 63+38.76 SHILOH ROAD (CH 11) =  
STA 500+00 1800TH ROAD

INTERSECTION DETAILS - SHILOH ROAD AND 1800TH RD		
REVISIONS No. DATE INITIALS 1 2 3 4 5 6 7 8 9 10		SHILOH ROAD (CH 11) EDGAR COUNTY, ILLINOIS  <b>HOMER L. CHASTAIN &amp; ASSOCIATES, LLP</b> CONSULTING ENGINEERS 184-001897 DECATUR CHICAGO (317) 422-8644 (773) 714-0060 ROCKFORD (815) 489-0060
DRAWN BY: LBM DATE: 02/07 CHECKED BY: CAS DATE: 07/07 BOOK NUMBER: 469 PROJECT No.: 5245 SHEET No.:		