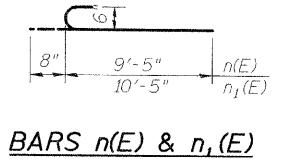
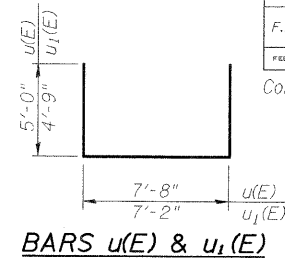


Contract # 91382



BILL OF MATERIAL

Bar	No.	Size	Length	Shape
n(E)	24	5	7'-8"	—
n ₁ (E)	48	5	7'-2"	—
n(E)	60	6	10'-1"	U
n ₁ (E)	112	6	11'-1"	U
n(E)	80	8	9'-8"	—
n ₁ (E)	144	8	9'-2"	—
u(E)	32	5	17'-8"	U
u ₁ (E)	72	5	17'-6"	U
Structure Excavation			Cu. Yd.	121
Concrete Structures			Cu. Yd.	155.6
Reinforcement Bars, Epoxy Coated			Pound	10,820
Furnishing Steel Piles, HP 10x42			Foot	833
Driving Piles			Foot	833
Test Pile			Each	3

Bars designated (E) shall be epoxy coated.
 HP piles shall be AASHTO M270 Grade 50.
 *Plates and angles shall be AASHTO M270 Grade 36.
 *HSS sections shall be ASTM A500 Grade B.
 *Plates, angles, and HSS sections shall be shop primed and painted with field touch-up. See Special Provisions.
 *Cost included with Masonry Column, Large and Masonry Column, Small
 **Cost included with Concrete Structures

SMALL COLUMN PILE DATA

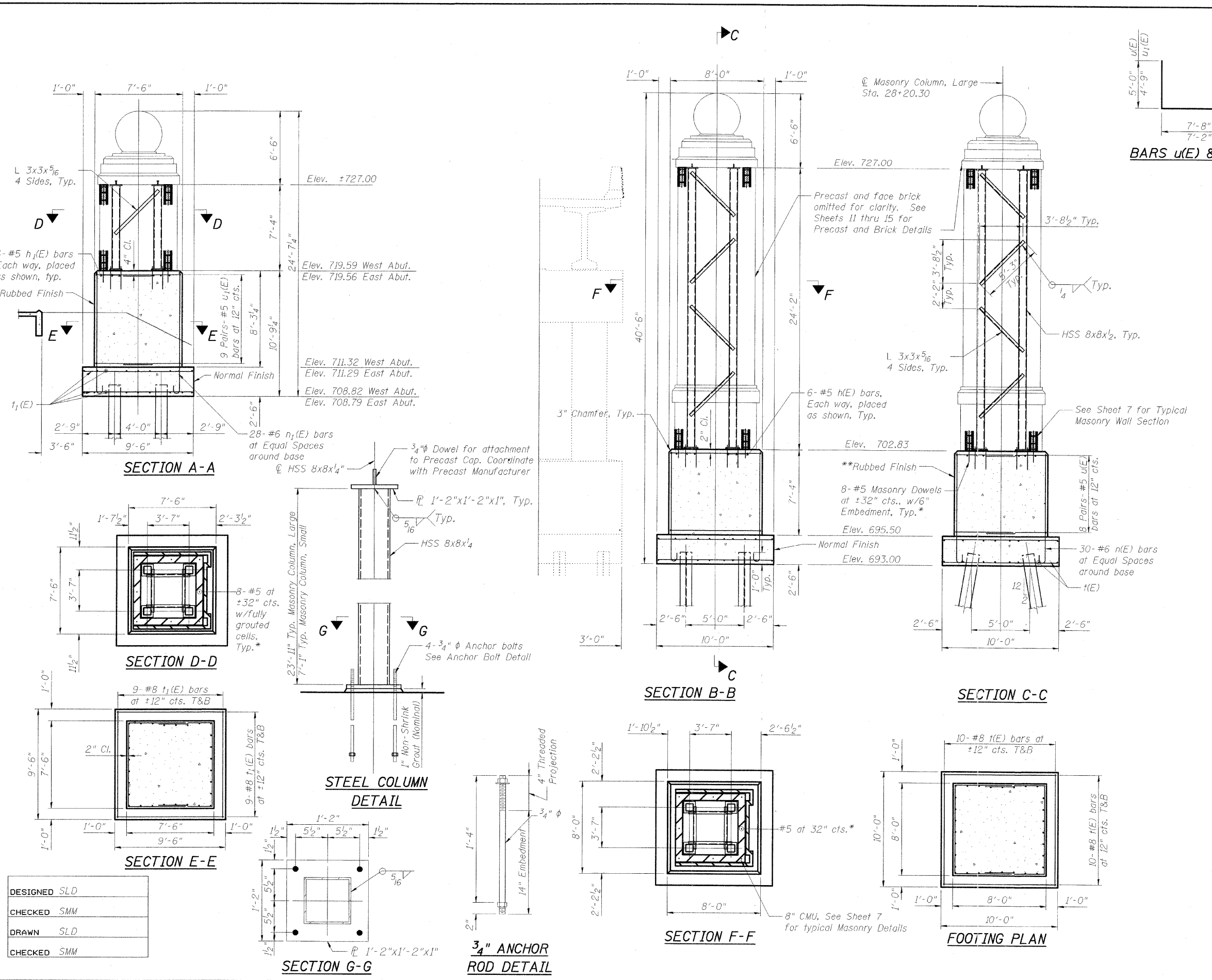
Type: HP 10x42
 Nominal Required Bearing: 108 kips
 Factored Resistance Available: 43 kips
 Est. Length: 38 ft
 No. Production Piles: 14
 No. Test Piles: 2

LARGE COLUMN PILE DATA

Type: HP 10x42
 Nominal Required Bearing: 295 kips
 Factored Resistance Available: 118 kips
 Est. Length: 43 ft
 No. Production Piles: 7
 No. Test Piles: 1

**STRUCTURE DETAILS
 CURTIS ROAD BRIDGE ENHANCEMENTS
 CHAMPAIGN COUNTY
 STATION 297+20.45**

DESIGN FIRM REGISTRATION
 No. 184-000450
 1817 SOUTH NEIL STREET
 SUITE 100
 CHAMPAIGN, IL 61820
 PHONE : 217.373.8900
 FAX : 217.373.8923



DESIGNED	SLD
CHECKED	SMM
DRAWN	SLD
CHECKED	SMM