

STATE OF ILLINOIS  
DEPARTMENT OF TRANSPORTATION  
DIVISION OF HIGHWAYS  
**PLANS FOR PROPOSED  
ENHANCEMENTS**

**INDEX OF SHEETS**

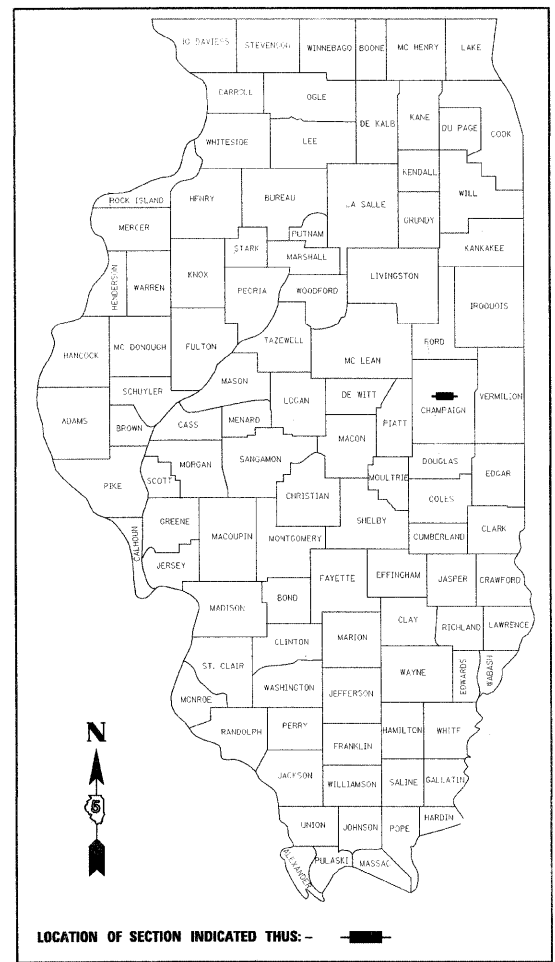
SHEET NO.	DESCRIPTION
1	COVER SHEET
2	HIGHWAY STANDARDS, AND GENERAL NOTES
3	SUMMARY OF QUANTITIES
4	GENERAL PLAN AND ELEVATION
5	STRUCTURE DETAILS
6	RAILING DETAILS
7	MASONRY DETAILS
8	PLANTING PLAN
9	PLANTING DETAILS
10	MATERIALS PLAN
11	LARGE COLUMN DETAILS
12	SMALL COLUMN DETAILS
13 TO 15	COLUMN DETAILS
16	LIGHTING PLAN
17 TO 18	LIGHTING DETAILS
19	LIGHTING SCHEDULE
20 TO 21	SOIL BORINGS

PLAN 1 INCH = 20 FEET  
 PROFILE HORIZ. 1 INCH = 20 FEET  
 PROFILE VERT. 1 INCH = 5 FEET  
 CROSS SECTIONS HORIZ. 1 INCH = 10 FEET  
 CROSS SECTIONS VERT. 1 INCH = 5 FEET

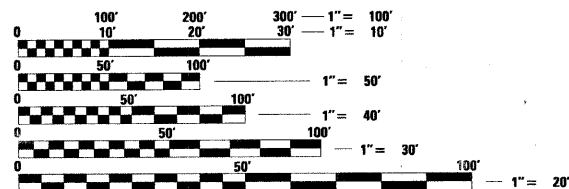
**CITY OF CHAMPAIGN  
CHAMPAIGN COUNTY, ILLINOIS  
SECTION NO. 00-00374-03-LS  
PROJECT NO. TE-00D5(85)  
JOB NO. C-95-327-07  
CITY PROJECT NO. 22-0000-07900-0377**

**CURTIS ROAD BRIDGE ENHANCEMENT**

R 8 E



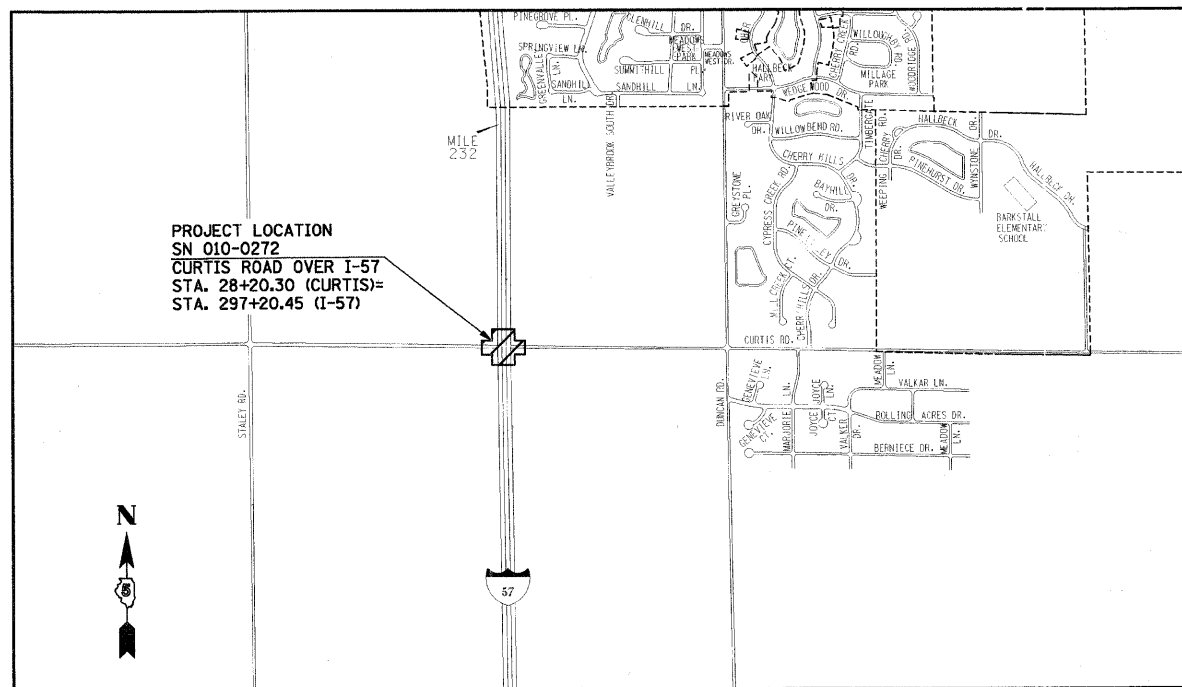
**ILLINOIS HIGHWAY STANDARD DRAWINGS**  
(SEE SHEET NO. 2)



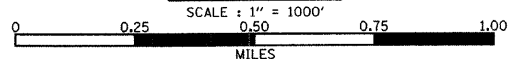
FULL SIZE PLANS HAVE BEEN PREPARED USING STANDARD ENGINEERING SCALES. REDUCED SIZED PLANS WILL NOT CONFORM TO STANDARD SCALES. IN MAKING MEASUREMENTS ON REDUCED PLANS, THE ABOVE SCALES MAY BE USED.

J.U.L.I.E.  
JOINT UTILITY LOCATION INFORMATION FOR EXCAVATION  
1-800-892-0123

**CONTRACT NO. 91382**



**LOCATION MAP**



T 19 N

PROJECT LOCATION  
SN 010-0272  
CURTIS ROAD OVER I-57  
STA. 28+20.30 (CURTIS)=  
STA. 297+20.45 (I-57)

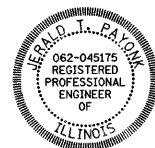
**DESIGN DESIGNATION**  
INTERSTATE ROUTE 57  
PRINCIPAL ARTERIAL ADT 27,600  
  
CURTIS ROAD  
MINOR ARTERIAL ADT 19,600

APPROVED *W. Roland White* Jan 11, 20 08  
CHAMPAIGN CITY ENGINEER

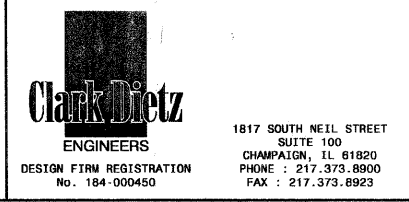
PASSED *David A. Spill* 1/21 20 08  
DISTRICT FIVE ENGINEER OF  
LOCAL ROADS & STREETS

Releasing For Bid Based on Limited Review  
*Jan 22* 20 08  
*John E. Brown*  
DEPUTY DIRECTOR OF HIGHWAYS,  
REGION THREE ENGINEER

STATE OF ILLINOIS  
DEPARTMENT OF TRANSPORTATION



PROFESSIONAL ENGINEER  
CLARK DIETZ, INC.  
DATE: 10 JAN 08  
LICENSE EXPIRES 11-30-09



# HIGHWAY STANDARDS

SHEET NO.	NAME OF STANDARD
000001-05	STANDARD SYMBOLS, ABBREVIATIONS AND PATTERNS
001001-01	AREAS OF REINFORCEMENT BARS
001006	DECIMAL OF AN INCH AND OF A FOOT
280001-04	TEMPORARY EROSION CONTROL SYSTEMS
701101-01	OFF-ROAD OPERATIONS, MULTILANE, 15' TO 24" FROM PAVEMENT EDGE
701106-01	OFF-ROAD OPERATIONS, MULTILANE, MORE THAN 15' AWAY
701400-02	APPROACH TO LANE CLOSURE, FREEWAY/EXPRESSWAY
701401-04	LANE CLOSURE, FREEWAY/EXPRESSWAY
701406-04	LANE CLOSURE, FREEWAY/EXPRESSWAY, DAY OPERATIONS ONLY
701411-04	LANE CLOSURE, MULTILANE, AT ENTRANCE OR EXIT RAMP, FOR SPEEDS $\geq$ 45 MPH
701601-05	URBAN LANE CLOSURE, MULTILANE, 1W OR 2W WITH NONTRAVERSABLE MEDIAN
701901	TRAFFIC CONTROL DEVICES
805001	ELECTRICAL SERVICE INSTALLATION DETAILS
814001-01	HANDHOLES

# GENERAL NOTES

F.A. RTE.	SECTION	COUNTY	TOTAL SHEETS	SHEET NO.
I-57	00-00374-03-LS	CHAMPAIGN	21	2
STA.		TO STA.		
FED. ROAD DIST. NO.	ILLINOIS	FED. AID PROJECT		

CONTRACT NO. 91382

- ALL ELEVATIONS SHOWN ARE REFERRED TO THE N.A.V.D. 88 DATUM.
- WHEREVER IN THE PLANS OR SPECIFICATIONS THE TERM "STANDARD SPECIFICATIONS" IS USED IT SHALL BE UNDERSTOOD BY THE CONTRACTOR TO MEAN THE "STANDARD SPECIFICATIONS FOR ROAD AND BRIDGE CONSTRUCTION" AS PREPARED BY THE DEPARTMENT OF TRANSPORTATION OF THE STATE OF ILLINOIS AND ADOPTED ON JANUARY 1, 2007.
- ANY REFERENCE TO STANDARDS THROUGHOUT THE PLANS SHALL BE INTERPRETED TO BE THE LATEST STANDARDS OF THE DEPARTMENT AS SHOWN ON THE HIGHWAY STANDARDS AND LEGEND SHEET.
- IT IS THE CONTRACTOR'S RESPONSIBILITY TO ASCERTAIN EXISTING FIELD CONDITIONS BEFORE BIDDING ON THE PROJECT.
- THE CONTRACTOR WILL BE REQUIRED TO COMPLY WITH STATE REGULATIONS REGARDING AIR, WATER, AND NOISE POLLUTION.
- THE CONTRACTOR SHALL TAKE CARE NOT TO STORE OR DISPOSE OF DEBRIS OR UNSUITABLE MATERIALS WITHIN LIMITS OF THE IMPROVEMENT AND TAKE CARE TO LIMIT CONSTRUCTION TO WITHIN THE RIGHT-OF-WAY AND EASEMENT AREAS. UNNECESSARY ENCROACHMENTS ONTO PRIVATE OR PUBLIC AREAS WILL NOT BE ALLOWED.
- WHERE SECTION OR SUBSECTION MONUMENTS, BENCHMARKS, OR IRON PIPE MONUMENTS ARE ENCOUNTERED, THE ENGINEER SHALL BE NOTIFIED BEFORE SUCH MONUMENTS ARE REMOVED. THE CONTRACTOR SHALL PROTECT AND CAREFULLY PRESERVE ALL MONUMENTS UNTIL AN ILLINOIS REGISTERED LAND SURVEYOR OR AGENT HAS WITNESSED OR OTHERWISE REFERENCED THEIR LOCATION. THE CONTRACTOR WILL BE RESPONSIBLE FOR HAVING AN ILLINOIS REGISTERED LAND SURVEYOR RE-ESTABLISH ANY MONUMENTS UNNECESSARILY DESTROYED BY HIS OPERATIONS.
- THE FINISHED EARTHWORK SHALL HAVE VEGETATIVE SUSTAINING SOIL COVERING THE TOP 4 INCHES IN AREAS TO BE SEEDED. THE TOPSOIL REQUIRED WILL BE PAID FOR PER SQUARE YARD FOR TOPSOIL FURNISH AND PLACE, 4'.
- ALL DISTURBED AREAS SHALL BE SEEDED AS SHOWN ON THE PLANS. SEEDING AND MULCHING SHALL BE DONE AS SOON AS EACH STAGE IS COMPLETED AS DIRECTED BY THE ENGINEER. EXISTING TURF WHICH IS DAMAGED OUTSIDE THE LIMITS OF CONSTRUCTION SHALL BE REESTABLISHED WITH SEED AS DIRECTED BY THE ENGINEER AT THE CONTRACTOR'S EXPENSE.
- UTILITY LOCATIONS WERE PLOTTED FROM INFORMATION FURNISHED BY THE VARIOUS UTILITY COMPANIES AND THEIR ACCURACY SHOULD BE CONSIDERED APPROXIMATE. NO RESPONSIBILITY IS ACCEPTED FOR THE LOCATIONS AS SHOWN OR THAT ALL UTILITY FACILITIES ARE SHOWN. UTILITY LOCATIONS SHOWN IN THE PLANS ARE APPROXIMATE AND REPRESENT LOCATIONS PRIOR TO ANY UTILITY RELOCATIONS REQUIRED TO ACCOMODATE THE PROPOSED CONSTRUCTION. THE CONTRACTOR IS ADVISED THAT SOME UTILITY COMPANIES MAY HAVE RELOCATED THEIR FACILITIES PRIOR TO THE START OF CONSTRUCTION UNDER THIS CONTRACT. BEFORE COMMENCING CONSTRUCTION OPERATIONS THE CONTRACTOR SHALL OBTAIN FROM THE ENGINEER ANY AVAILABLE INFORMATION REGARDING THE RELOCATED POSITIONS OF UTILITIES WITHIN THE PROJECT LIMITS. WHETHER VARIOUS UTILITIES HAVE BEEN RELOCATED OR REMAIN IN THEIR ORIGINAL LOCATION, IT SHALL BE THE RESPONSIBILITY OF THE CONTRACTOR TO DETERMINE THEIR EXACT LOCATION AT THE TIME OF CONSTRUCTION AND TO PROTECT SAME. THE CONTRACTOR'S ATTENTION IS DIRECTED TO THE SPECIAL PROVISION ENTITLED "COOPERATION WITH UTILITIES" AND ARTICLE 107.31 OF THE STANDARD SPECIFICATIONS.
- THE CONTRACTOR SHALL COORDINATE CONSTRUCTION ACTIVITIES WITH UTILITY COMPANIES.
- THE CONTRACTOR SHALL BE RESPONSIBLE FOR PROTECTING UTILITY PROPERTY FROM CONSTRUCTION OPERATIONS AS OUTLINED IN ARTICLE 107.31 OF THE STANDARD SPECIFICATIONS. THE JULIE NUMBER IS 800-892-0123. A MINIMUM OF 48 HOURS ADVANCE NOTICE IS REQUIRED.
- UTILITY OWNERS:  
\*INDICATES J.U.L.I.E. MEMBER
 

*URBANA-CHAMPAIGN SANITARY DISTRICT P.O. BOX 669 URBANA, ILLINOIS 61803 (217) 367-3409	*INSIGHT 303 FAIRLAWN DRIVE URBANA, ILLINOIS 61801 (217) 384-2510
*ILLINOIS-AMERICAN WATER COMPANY 201 DEVONSHIRE DR. CHAMPAIGN, ILLINOIS 61820 (217) 373-3258	*AT&T 201 S. NEIL STREET CHAMPAIGN, ILLINOIS 61820 (217) 398-7990
*AMEREN IP (ELECTRICAL DIST./GAS) 1112 ANTHONY DRIVE URBANA, ILLINOIS 61801 (217) 383-7280	UNIVERSITY OF ILLINOIS OPERATIONS AND MAINTENANCE PHYSICAL PLANT SERVICE BUILDING 1501 S. OAK STREET CHAMPAIGN, ILLINOIS 61821 217-333-3463
- AT THIS TIME THERE ARE NO KNOWN UTILITY CONFLICT WITH THE UI LATERAL NATURAL GAS LINE AS RELOCATED IN CONTRACT #90758. THE CONTRACTOR MAY OBTAIN AS BUILT PLANS FROM THE UNIVERSITY OF ILLINOIS OPERATIONS AND MAINTENANCE DEPARTMENT.
- THE CONTRACTOR SHALL PROVIDE AND INSTALL TWO WEIGHTED SAND BAGS ON EACH TYPE II BARRICADE USED. (ONE WEIGHTED SAND BAG ACROSS EACH BOTTOM RAIL.)
- FOR STABILIZATION, ALL TYPE III BARRICADES SHALL REQUIRE A MINIMUM OF FOUR SAND BAGS PER BARRICADE.
- THE CITY OF CHAMPAIGN SHALL BE RESPONSIBLE FOR NOTIFYING THE PUBLIC, THE UNITED STATES POSTAL SERVICE, AND THE EMERGENCY SERVICE AGENCIES OF ALL CHANGES IN THE TRAFFIC MAINTENANCE PLANS. THE CONTRACTOR SHALL NOTIFY THE CITY OF CHAMPAIGN OF ALL CHANGES IN THE TRAFFIC MAINTENANCE PLANS A MINIMUM OF 48 HOURS IN ADVANCE.
- THE CONTRACTOR SHALL BE RESPONSIBLE FOR CLEANUP OF THE SITE PRIOR TO FINAL ACCEPTANCE IN ACCORDANCE WITH ARTICLE 104.06 OF THE STANDARD SPECIFICATIONS. THIS WORK SHALL ALSO INCLUDE CLEANING ALL DRAINAGE FACILITIES OF FOREIGN MATERIALS.


REVISIONS	
NAME	DATE

ILLINOIS DEPARTMENT OF TRANSPORTATION

## HIGHWAY STANDARDS AND GENERAL NOTES

SCALE: As Noted  
DATE: 01/04/08

DRAWN BY SLD  
CHECKED BY JTP



DESIGN FIRM REGISTRATION  
No. 184-00450  
118 SOUTH CLINTON STREET  
SUITE 600  
CHICAGO, IL 60661  
PHONE : 312.648.9900  
FAX : 312.648.0284

\\CH-1\PROJECTS\01352\Plans\sheets\General\Notes.dgn 1/10/2008

# SUMMARY OF QUANTITIES

F.A. RTE.	SECTION	COUNTY	TOTAL SHEETS	SHEET NO.
1-57	00-00374-03-LS	CHAMPAIGN	21	3
STA.		TO STA.		
FED. ROAD DIST. NO.		ILLINOIS	FED. AID PROJECT	

CONTRACT NO. 91382

ITEM NUMBER	PAY ITEM	CONSTRUCTION CODE	Y003 TOTAL QUANTITY
21101615	TOPSOIL FURNISH AND PLACE, 4"	SO YD	970
25000210	SEEDING, CLASS 2A	ACRE	0.2
25000400	NITROGEN FERTILIZER NUTRIENT	POUND	18
25000500	PHOSPHORUS FERTILIZER NUTRIENT	POUND	18
25000600	POTASSIUM FERTILIZER NUTRIENT	POUND	18
25100105	MULCH METHOD 1	ACRE	0.2
• 25100635	HEAVY DUTY EROSION CONTROL BLANKET	SQ YD	217
25200200	SUPPLEMENTAL WATERING	UNIT	10
50200100	STRUCTURE EXCAVATION	CU YD	121
50300225	CONCRETE STRUCTURES	CU YD	155.6
• 50800205	REINFORCEMENT BARS, EPOXY COATED	POUND	10820
• 50901755	PARAPET RAILING, SPECIAL	FOOT	539
51201400	FURNISHING STEEL PILES HP10X42	FOOT	833
51202305	DRIVING PILES	FOOT	833
51203400	TEST PILE STEEL HP10X42	EACH	3
63100167	TRAFFIC BARRIER TERMINAL TYPE 1, SPECIAL (TANGENT)	EACH	1
• 63304385	TRAFFIC BARRIER TERMINAL REMOVAL, TYPE 1	EACH	1
67100100	MOBILIZATION	L SUM	1
• 78201000	TERMINAL MARKER - DIRECT APPLIED	EACH	1
• 80400100	ELECTRIC SERVICE INSTALLATION	L SUM	1
81012200	CONDUIT IN TRENCH, 3/4" DIA. PVC	FOOT	317
81012600	CONDUIT IN TRENCH, 2" DIA. PVC	FOOT	205
81021330	CONDUIT PUSHED, 2" DIA. PVC	FOOT	160
81300800	JUNCTION BOX, STAINLESS STEEL, ATTACHED TO STRUCTURE, 18" x 12" x 6"	EACH	1
81400730	HANDHOLE, COMPOSITE CONCRETE	EACH	1
81603035	UNIT DUCT, 600V, 2-1C NO. 6, 1/C NO. 6 GROUND (XLP-TYPE USE), 1" DIA. POLYETHYLENE	FOOT	700
81702450	ELECTRICAL CABLE IN CONDUIT, 600V (XLP-TYPE USE) 3 1/C #10	FOOT	1252
81900200	TRENCH AND BACKFILL FOR ELECTRICAL WORK	FOOT	1171
82500510	LIGHTING CONTROLLER TYPE CB-RCS 60 AMP 240 VOLT	EACH	1
• A2002420	TREE, BETULA NIGRA HERITAGE (HERITAGE RIVER BIRCH), 2 1/2" CALIPER, BALLED AND BURLAPPED	EACH	12
• 02015401	Evergreen JUNIPERUS CHINENSIS 'KALLAY'S COMPACTA' (KALLAY COMPACT JUNIPER), 24" width, balled and burlapped	EACH	84
•			
• XX005856	MULCH - SHREDDED HARDWOOD BARK, 3" DEPTH	CU YD	40
• XX006302	NEPETA X FAASSENII 'WALKERS LOW' (WALKERS LOW CATMINT)	EACH	1000
• Z0013798	CONSTRUCTION LAYOUT	L SUM	1
• XX007293	PERENNIAL, FALLOPIA JAPONICA 'COMPACTA' (COMPACT FLEECE FLOWER), 1 GALLON	EACH	3480
• XX007294	PERENNIAL, MISCANTHUS SINENSIS 'PURPURASCENS' (PURPLE SILVER GRASS), 2 GALLON	EACH	40

\* SPECIAL PROVISION

ITEM NUMBER	PAY ITEM	CONSTRUCTION CODE	Y003 TOTAL QUANTITY
• XX007295	LIGHTING UNIT A, COMPLETE	EACH	6
• XX007296	LIGHTING UNIT B, COMPLETE	EACH	6
• XX007297	MASONRY COLUMN, LARGE	EACH	2
• XX007298	MASONRY COLUMN, SMALL	EACH	4
70100420	TRAFFIC CONTROL AND PROTECTION, STANDARD 701411	EACH	2
70100700	TRAFFIC CONTROL AND PROTECTION, STANDARD 701406	L SUM	1
70100800	TRAFFIC CONTROL AND PROTECTION, STANDARD 701401	L SUM	1
70102630	TRAFFIC CONTROL AND PROTECTION, STANDARD 701601	L SUM	1

REVISIONS	
NAME	DATE

ILLINOIS DEPARTMENT OF TRANSPORTATION

## SUMMARY OF QUANTITIES

SCALE: As Noted      DRAWN BY: SLD

DATE: 01/04/08      CHECKED BY: JTP

\* SEE SPECIAL PROVISIONS

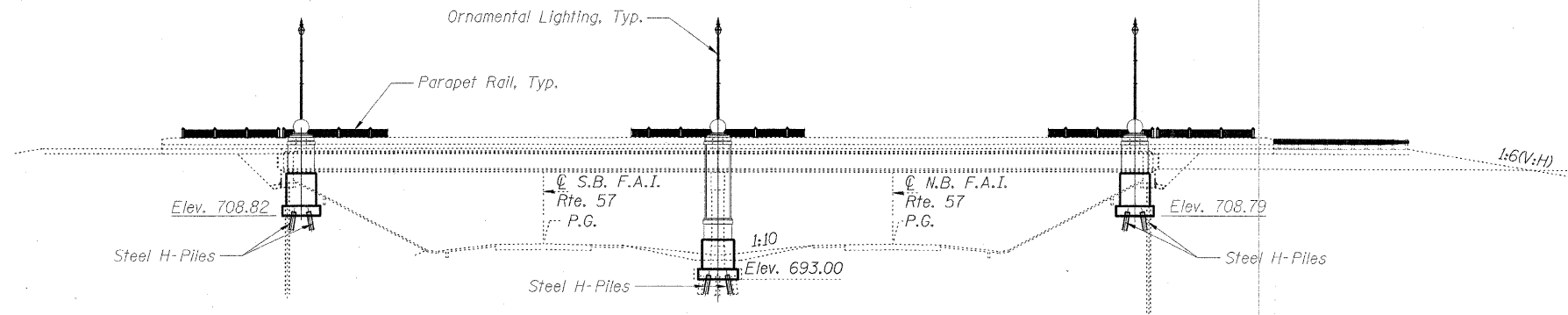
DESIGN FIRM REGISTRATION NO. 184-000450  
118 SOUTH CLINTON STREET SUITE 600  
CHICAGO, IL 60681  
PHONE : 312.648.8900  
FAX : 312.648.0204

\\CH-1\PROJECTS\CO-30\Plans\Sheets\Summary of Quantities.dgn 1/17/2008

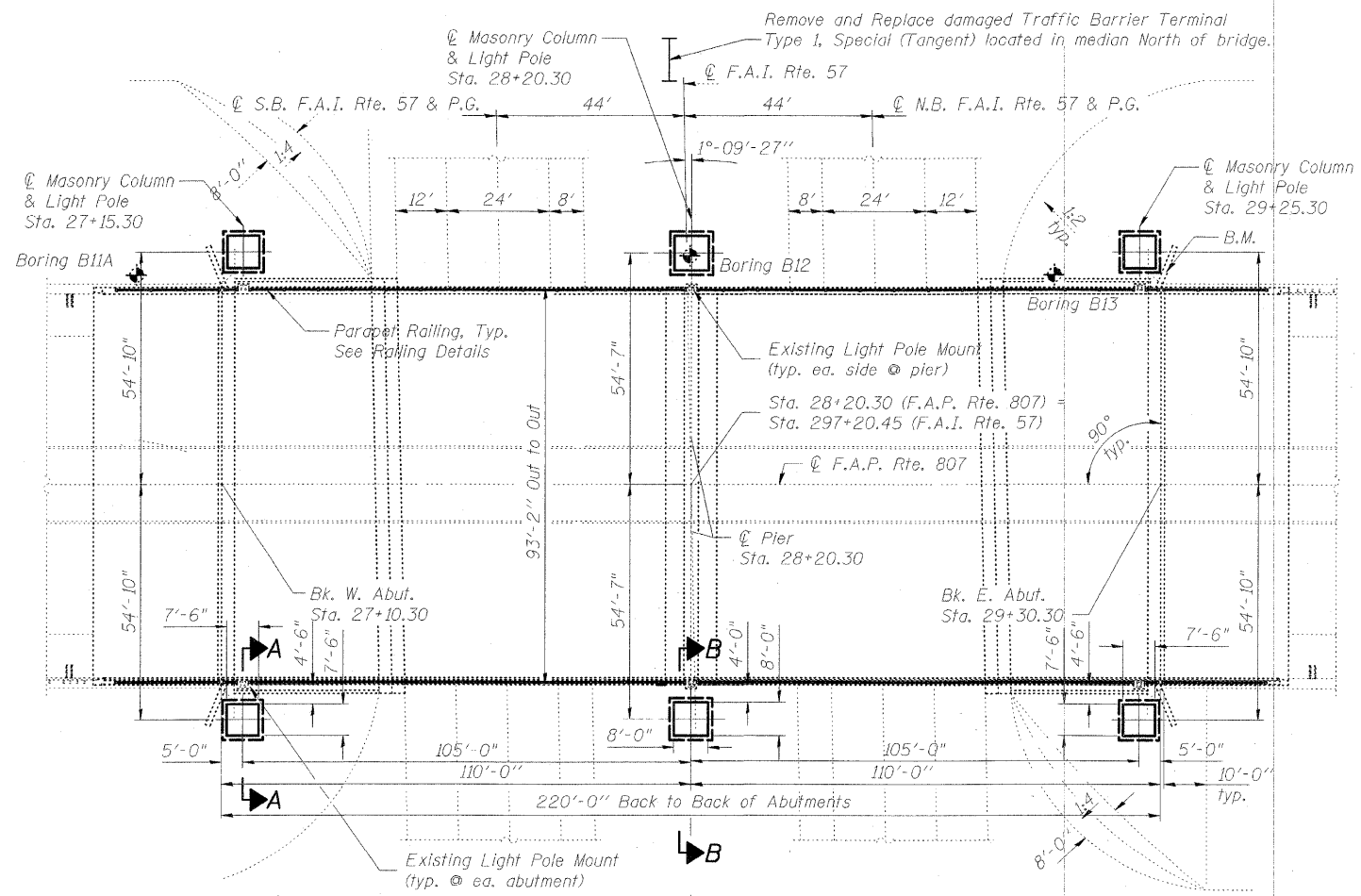
Bench Mark: Chiseled "□" on top center of northeast wingwall of I-57 Bridge S.N. 010-0272 Elev. 724.11

ROUTE NO.	SECTION	COUNTY	SHEET NO.	SHEET NO.
F.A.I. 57	00-00374 -03-LS	Champaign	21	4
FED. ROAD DIST. NO.	ILLINOIS	FED. AID PROJECT-		

Contract # 91382



**ELEVATION**



**PLAN**

**GENERAL NOTES**

1. Reinforcement bars shall conform to the requirements of ASTM A706 Gr. 60 (IL Modified). See Special Provisions.
2. Reinforcing bars designated (E) shall be epoxy coated.
3. No field welding is permitted except as specified in the contract documents.
4. Concrete Sealer shall be applied to the cast-in-place concrete with rubbed finish. Cost included with Concrete Structures.
5. The Contractor shall drive test piles to 110% of the nominal required bearing specified in production locations at substructures specified or approved by the Engineer before ordering the remainder of piles.
6. All Construction joints shall be bonded.
7. Calculated weight of Structural Steel:
  - =4,080 lbs M270 Gr. 36
  - =14,890 lbs A500
  - =480 lbs A307

**DESIGN SPECIFICATIONS**  
2002 AASHTO STANDARD  
SPECIFICATIONS, 17TH EDITION. (LFD)

Notes:  
For Sections A-A and B-B, see sheet 5 of 21.

DESIGNED	SLD
CHECKED	SMM
DRAWN	SLD
CHECKED	SMM



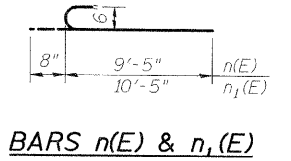
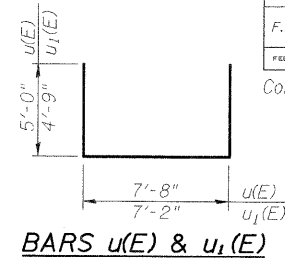
*Sean Marzano*  
PROFESSIONAL ENGINEER  
CLARK DIETZ, INC.  
DATE: 1/15/08  
LICENSE EXPIRES 11-30-09

**GENERAL PLAN AND ELEVATION  
CURTIS ROAD BRIDGE ENHANCEMENTS  
CHAMPAIGN COUNTY  
STATION 297+20.45**

**Clark Dietz**  
ENGINEERS

DESIGN FIRM REGISTRATION  
No. 184-000450  
1817 SOUTH NEIL STREET  
SUITE 100  
CHAMPAIGN, IL 61820  
PHONE : 217.373.8900  
FAX : 217.373.8923

Contract # 91382



**BILL OF MATERIAL**

Bar	No.	Size	Length	Shape
n(E)	24	5	7'-8"	—
n <sub>1</sub> (E)	48	5	7'-2"	—
n(E)	60	6	10'-1"	U
n <sub>1</sub> (E)	112	6	11'-1"	U
n(E)	80	8	9'-8"	—
n <sub>1</sub> (E)	144	8	9'-2"	—
u(E)	32	5	17'-8"	U
u <sub>1</sub> (E)	72	5	17'-6"	U
Structure Excavation			Cu. Yd.	121
Concrete Structures			Cu. Yd.	155.6
Reinforcement Bars, Epoxy Coated			Pound	10,820
Furnishing Steel Piles, HP 10x42			Foot	833
Driving Piles			Foot	833
Test Pile			Each	3

Bars designated (E) shall be epoxy coated.  
 HP piles shall be AASHTO M270 Grade 50.  
 \*Plates and angles shall be AASHTO M270 Grade 36.  
 \*HSS sections shall be ASTM A500 Grade B.  
 \*Plates, angles, and HSS sections shall be shop primed and painted with field touch-up. See Special Provisions.  
 \*Cost included with Masonry Column, Large and Masonry Column, Small  
 \*\*Cost included with Concrete Structures

**SMALL COLUMN PILE DATA**

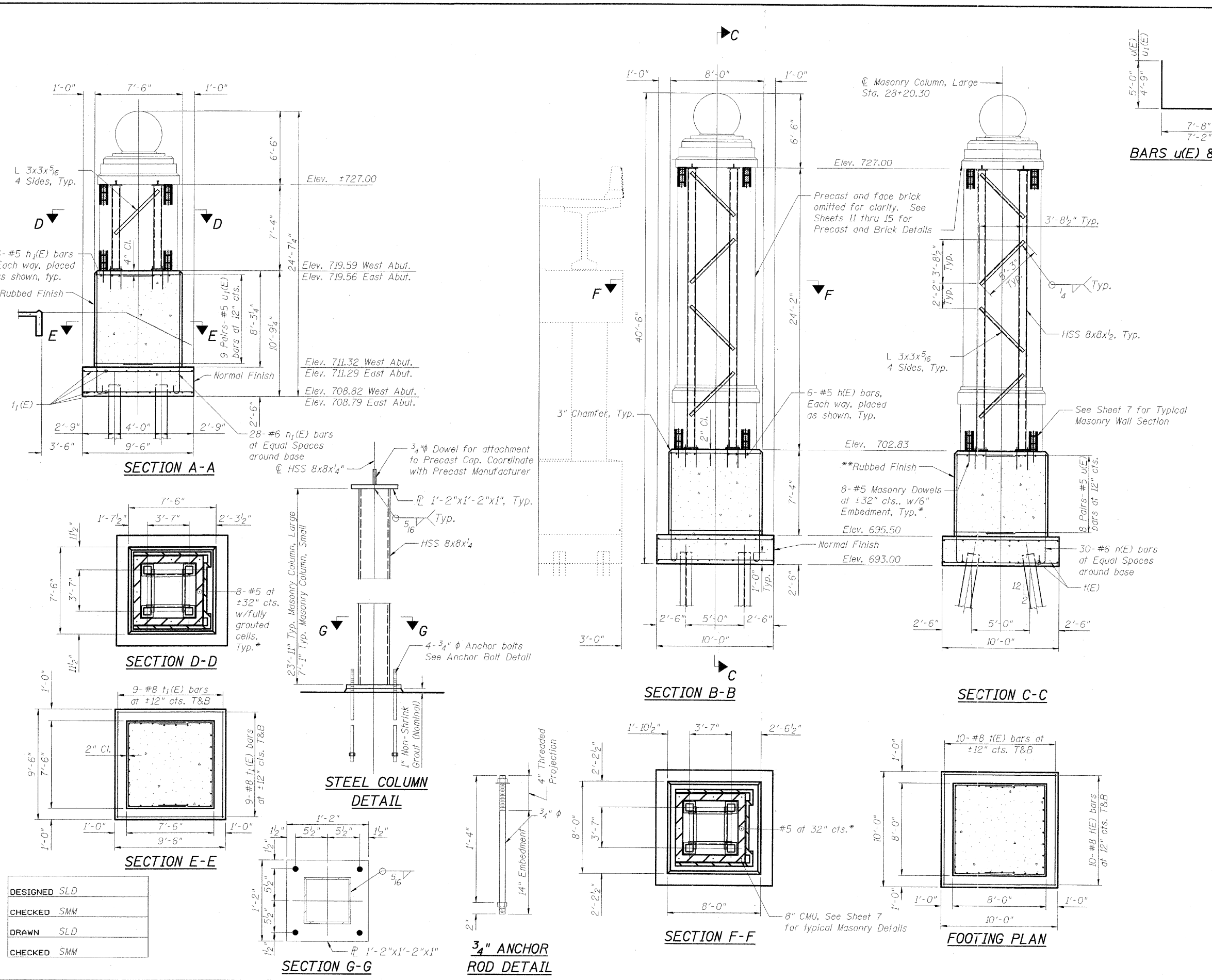
Type: HP 10x42  
 Nominal Required Bearing: 108 kips  
 Factored Resistance Available: 43 kips  
 Est. Length: 38 ft  
 No. Production Piles: 14  
 No. Test Piles: 2

**LARGE COLUMN PILE DATA**

Type: HP 10x42  
 Nominal Required Bearing: 295 kips  
 Factored Resistance Available: 118 kips  
 Est. Length: 43 ft  
 No. Production Piles: 7  
 No. Test Piles: 1

**STRUCTURE DETAILS  
 CURTIS ROAD BRIDGE ENHANCEMENTS  
 CHAMPAIGN COUNTY  
 STATION 297+20.45**

DESIGN FIRM REGISTRATION  
 No. 184-000450  
 1817 SOUTH NEIL STREET  
 SUITE 100  
 CHAMPAIGN, IL 61820  
 PHONE : 217.373.8900  
 FAX : 217.373.8923



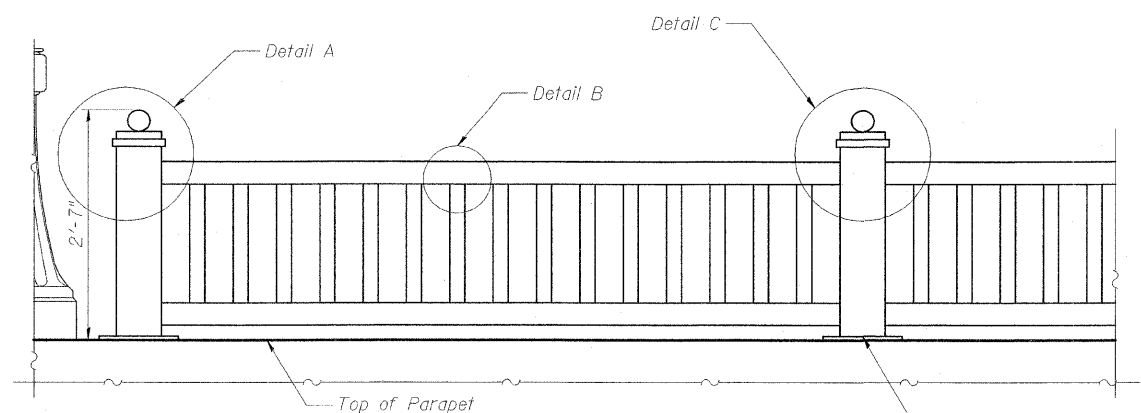
DESIGNED	SLD
CHECKED	SMM
DRAWN	SLD
CHECKED	SMM

**3/4" ANCHOR ROD DETAIL**

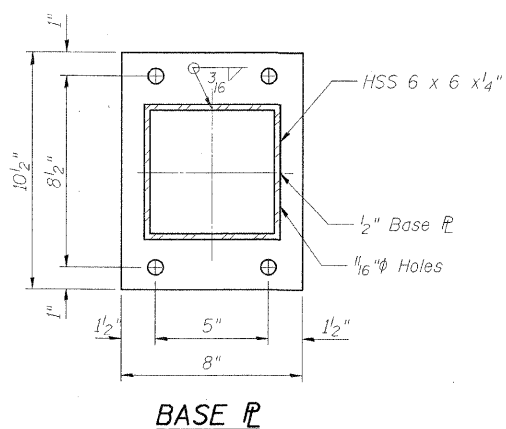
ROUTE NO.	SECTION	COUNTY	TOTAL SHEETS	SHEET NO.	SHEET NO. 6 21 SHEETS
F.A.I. 57	00-00374-03 LS	Champaign	21	6	
FED. ROAD DIST. NO.	ILLINOIS	FED. AID PROJECT			

Contract # 91382

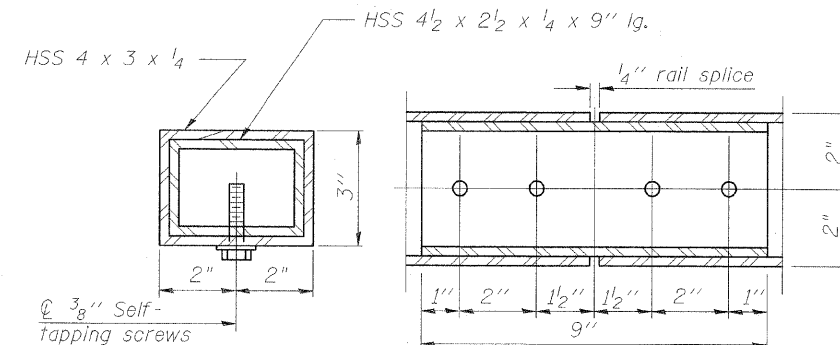
Note:  
All post, railing, splices, and bent plates shall be galvanized and painted. See Special Provisions.



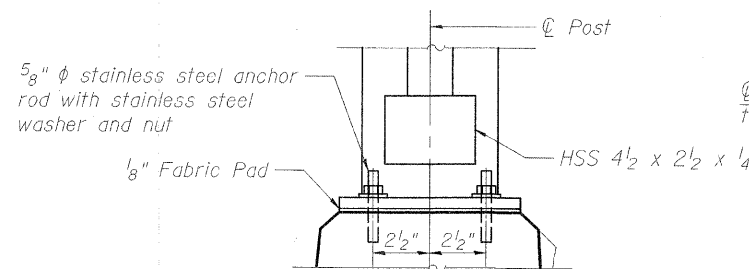
**PARAPET RAILING ELEVATION**



**BASE PLATE**

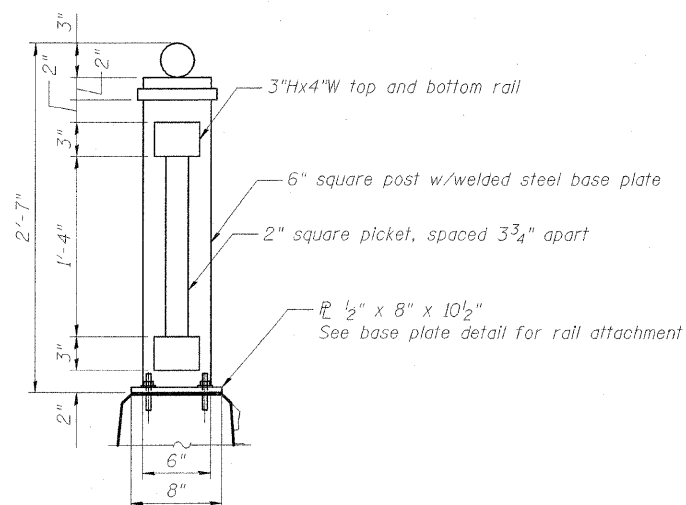


**RAIL SPLICE**

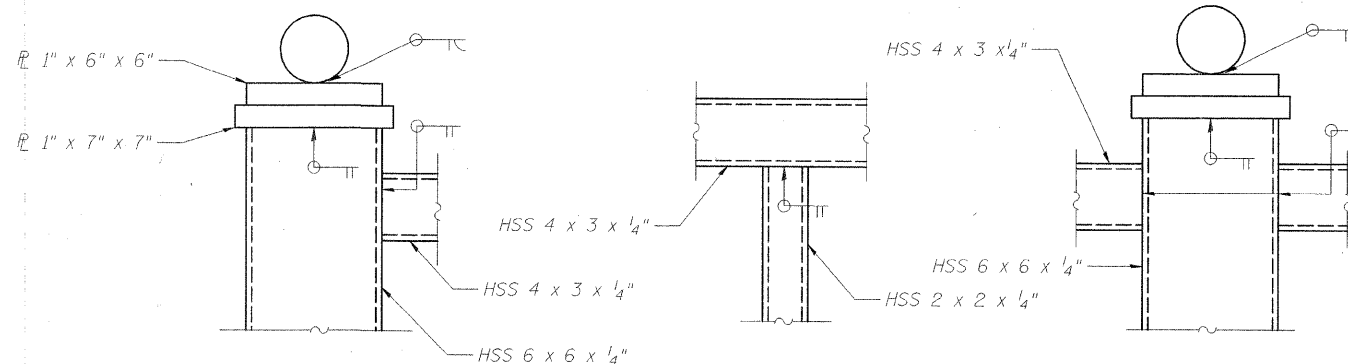


**ANCHOR BOLT DETAILS**

5/8" anchor rods shall be drilled and set according to Article 509.06 of the Standard Specifications. Embedment shall be according to the manufacturer's specifications.



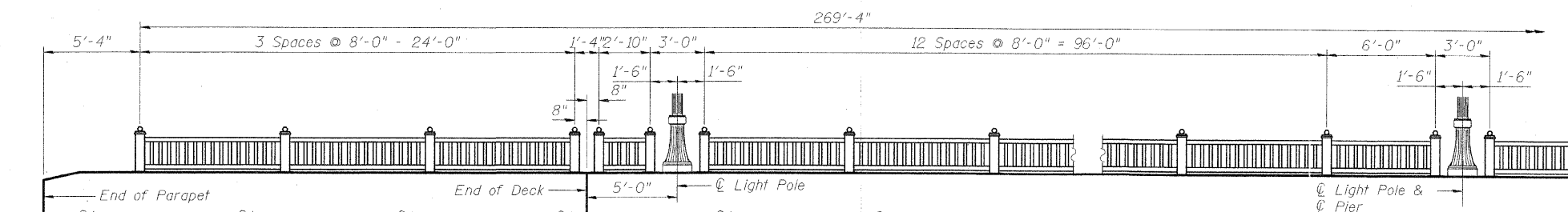
**PARAPET RAILING SECTION**



**DETAIL A**

**DETAIL B**

**DETAIL C**



**RAIL POST SPACING**

(Typical North and South Side of bridge. Railing is symmetric about center line of Pier.)

**BILL OF MATERIAL**

Item	Unit	Quantity
Parapet Railing, Special	Foot	539

**RAILING DETAILS  
CURTIS ROAD BRIDGE ENHANCEMENTS  
CHAMPAIGN COUNTY  
STATION 297+20.45**

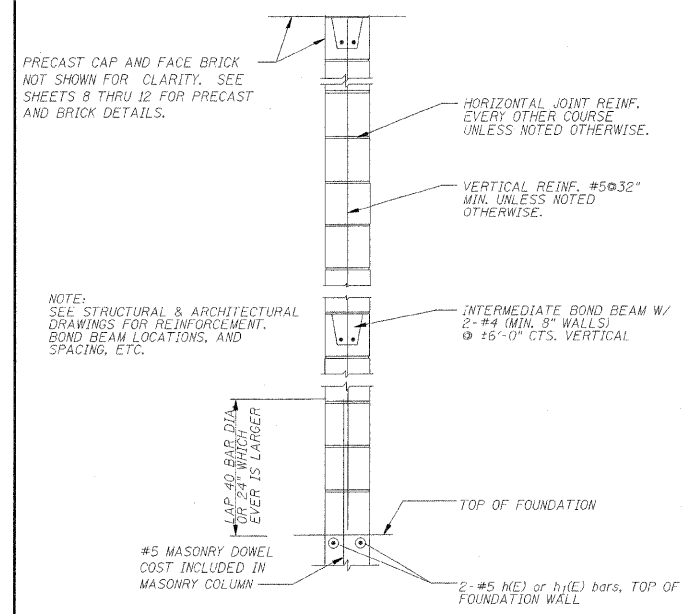
DESIGNED	SLD
CHECKED	SMM
DRAWN	SLD
CHECKED	SMM

**Clark Dietz**  
ENGINEERS

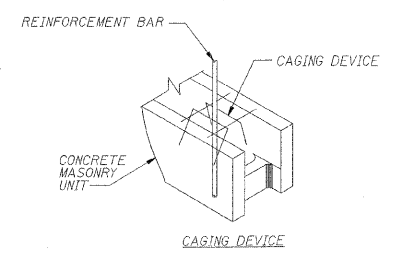
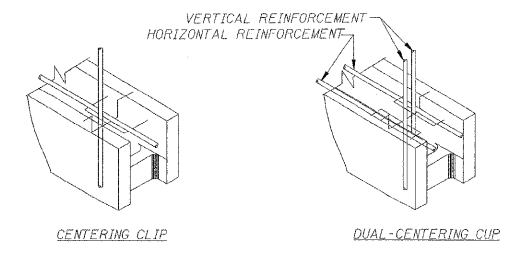
DESIGN FIRM REGISTRATION  
No. 184-000450  
1817 SOUTH NEIL STREET  
SUITE 100  
CHAMPAIGN, IL 61820  
PHONE : 217.373.8900  
FAX : 217.373.8923

ROUTE NO.	SECTION	COUNTY	TOTAL SHEETS	SHEET NO.	SHEET NO. 7
F.A.I. 57	00-00374-03-LS	Champaign	21	7	21 SHEETS
FED. ROAD DIST. NO.	ILLINOIS	FED. AID PROJECT-			

Contract # 91382

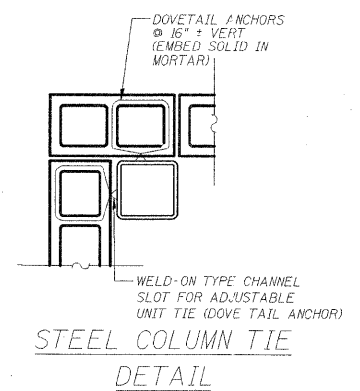


TYPICAL MASONRY WALL



NOTE: CENTERING AND CAGING DEVICES SHALL BE FORMED FROM #9 HARD STEEL WIRE, SPOT WELDED AND GALVANIZED.

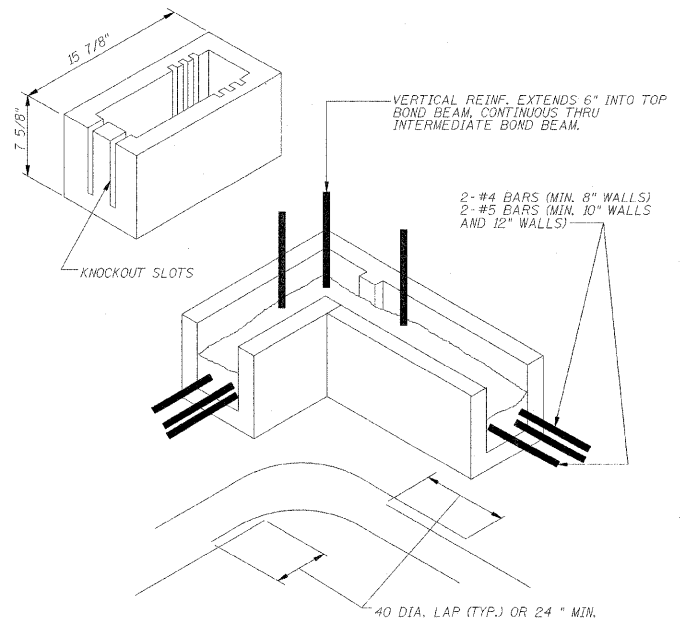
CENTERING AND CAGING DEVICES



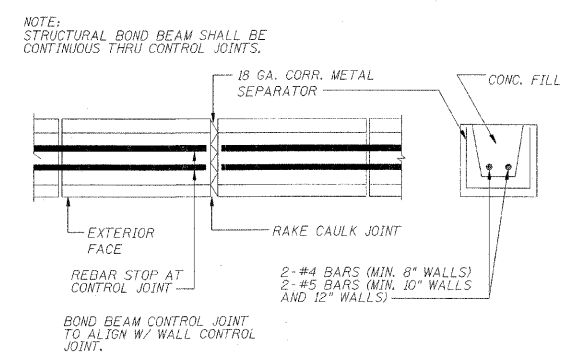
STEEL COLUMN TIE  
DETAIL

**MASONRY NOTES:**

- MASONRY WORK ON THIS PROJECT SHALL CONFORM TO ALL REQUIREMENTS OF ACI 530.1-99, SPECIFICATION FOR MASONRY STRUCTURES, PUBLISHED BY THE AMERICAN CONCRETE INSTITUTE (ACI), DETROIT, MICHIGAN, EXCEPT AS MODIFIED BY THE REQUIREMENTS OF THESE CONTRACT DOCUMENTS.
- CONTRACTOR SHALL SUBMIT SHOP DRAWINGS SHOWING ALL WALL REINFORCING.
- CONCRETE MASONRY UNITS SHALL BE IN ACCORDANCE WITH ASTM C90, GRADE N, TYPE I.
- MORTAR SHALL CONFORM TO ASTM C270, TYPE S MORTAR.
- COMPRESSIVE STRENGTH OF CONCRETE MASONRY (f'm) SHALL BE 1500 PSI MINIMUM.
- BAR REINFORCEMENT SHALL CONFORM TO ASTM A615 GRADE 60.
- LENGTH OF BAR SPLICES SHALL BE EQUAL TO 48 BAR DIAMETERS.
- JOINT REINFORCEMENT SHALL BE MADE OF COLD DRAWN WIRE AND SHALL CONFORM TO ASTM A82. JOINT REINFORCEMENT SHALL BE:  
  
3-9 GA. WIRE, LADDER TYPE - FOR WALLS WITH BRICK VENEER
- JOINT REINFORCEMENT, TIES AND ANCHORS SHALL BE GALVANIZED IN ACCORDANCE WITH ACI 530.1.
- JOINT REINFORCEMENT SHALL BE PLACED IN ALL MASONRY WALLS AND SPACED 16" O.C., UNLESS OTHERWISE NOTED.
- ALL CELLS WITH REINFORCEMENT, BOND BEAMS, MASONRY LINTELS AND SILLS SHALL BE FULLY GROUTED. GROUT SHALL CONFORM TO ASTM C476 AND SHALL HAVE 28-DAY COMPRESSIVE STRENGTH OF 2000 PSI MINIMUM.
- VERTICAL REINFORCEMENT SHALL TERMINATE WITH A 90 DEGREE HOOK AT THE TOP OF ALL WALLS.
- LAY CONCRETE MASONRY UNITS WITH FULL MORTAR COVERAGE ON HORIZONTAL AND VERTICAL FACE SHELLS AND WEBS.
- MASONRY APPURTENANCES INCLUDING MASONRY DOWEL RODS, DOVE TAIL ANCHORS, WIRE REINFORCEMENT, BOND BEAMS AND MASONRY REINFORCEMENT ARE INCLUDED IN THE UNIT PRICE FOR MASONRY COLUMN OF THE SIZE SPECIFIED AND NO ADDITIONAL COMPENSATION WILL BE ALLOWED.



BOND BEAM UNIT AT CORNER

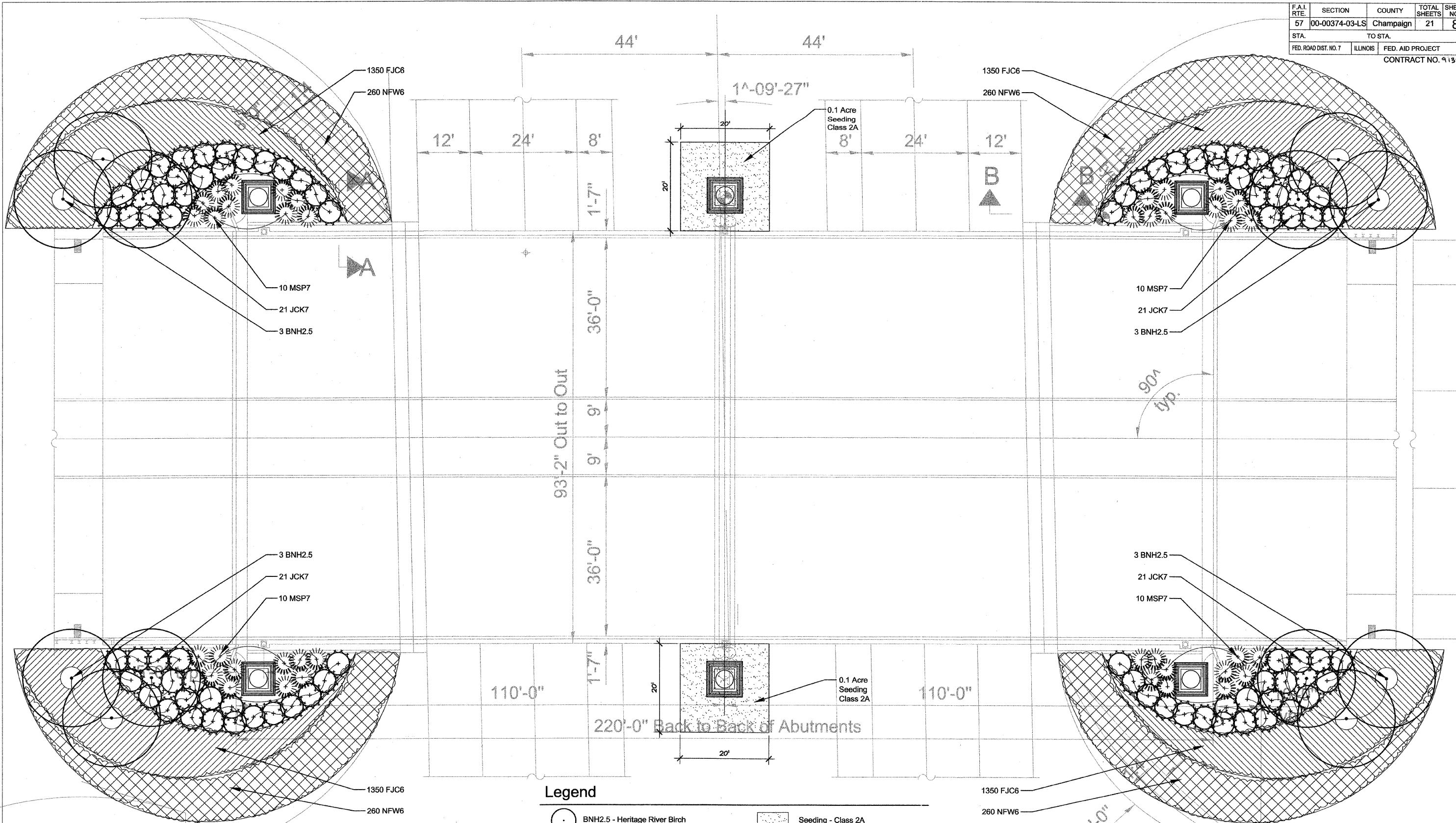


PLAN SECTION  
NON-STRUCTURAL BOND  
BEAM CONTROL JOINT

DESIGNED	SLD
CHECKED	SMM
DRAWN	SLD
CHECKED	SMM

**MASONRY DETAILS**  
**CURTIS ROAD BRIDGE ENHANCEMENTS**  
**CHAMPAIGN COUNTY**  
**STATION 297+20.45**

DESIGN FIRM REGISTRATION  
No. 184-000450  
1817 SOUTH NEIL STREET  
SUITE 100  
CHAMPAIGN, IL 61820  
PHONE : 217.373.8900  
FAX : 217.373.8923



- Legend**
- BNH2.5 - Heritage River Birch
  - Seeding - Class 2A
  - MSP7 - Purple Silver Grass
  - FJC6 - Compact Fleece Flower
  - JCK7 - Kallay Compact Pfitzer Juniper
  - NFW6 - Walker's Low Nepeta

REVISIONS	
NAME	DATE

ILLINOIS DEPARTMENT OF TRANSPORTATION

**PLANTING PLAN**

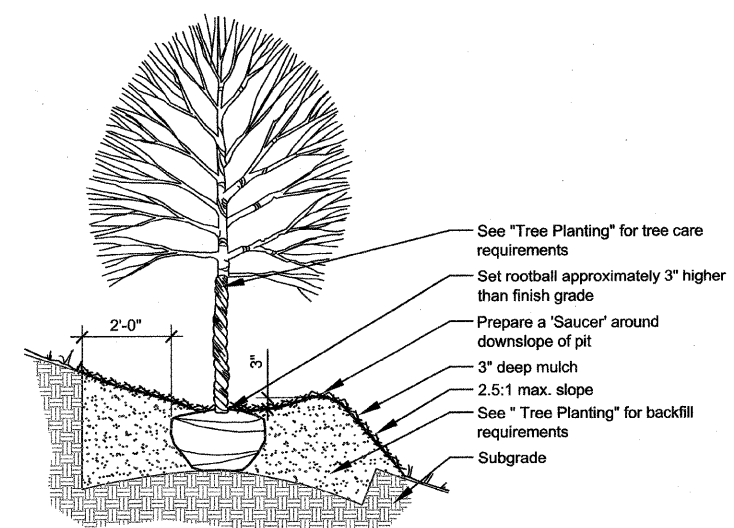
SCALE: AS NOTED  
DATE 06/15/07

DRAWN BY: JMN  
CHECKED BY: MEU

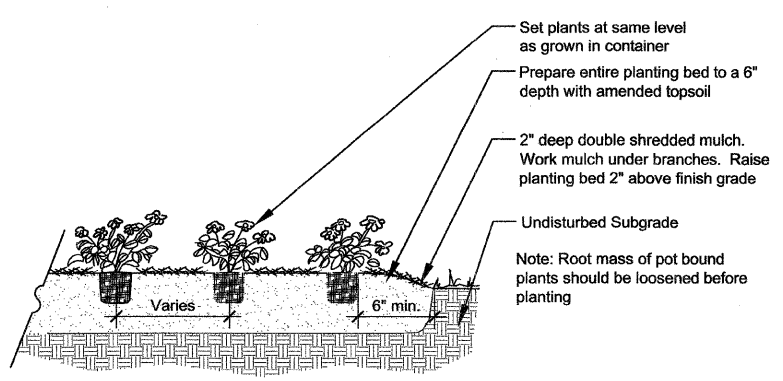
**A** Planting Plan

x-planting plan  
1" = 10'-0"

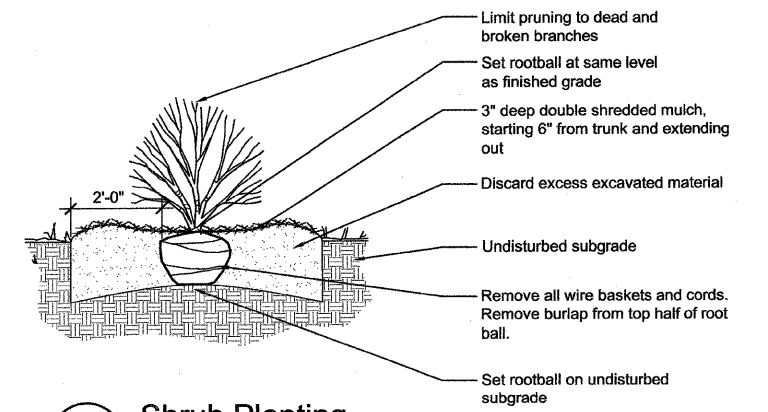




**A** Slope Condition Tree Planting d-tree-slope  
1/2" = 1'-0"



**C** Groundcover / Perennial Planting d-plant-perenn  
1/2" = 1'-0"



**B** Shrub Planting d-plant-shrub  
1/2" = 1'-0"

### Materials List

SHADE TREES				
CODE	BOTANICAL NAME	COMMON NAME	SIZE	QUANTITY
BNH2.5	Betula nigra 'Heritage'	Heritage River Birch	2-1/2" Cal	12
EVERGREEN SHRUBS				
CODE	BOTANICAL NAME	COMMON NAME	SIZE	QUANTITY
JCK7	Juniperus chinensis 'Kallays Compact'	Kallay Compact Pfizer Juniper	5 Gal.	84
PERENNIALS				
CODE	BOTANICAL NAME	COMMON NAME	SIZE	QUANTITY
FJC6	Fallopia japonica 'Compacta'	Compact Fleece Flower	1 Gal.	3480
NFW6	Nepeta x faassenii 'Walker's Low'	Walker's Low Nepeta	1 Gal.	1000
ORNAMENTAL GRASSES				
CODE	BOTANICAL NAME	COMMON NAME	SIZE	QUANTITY
MSP7	Miscanthus sinensis 'Purpurascens'	Purple Silver Grass	2 Gal.	40
LANDSCAPE MATERIALS				
	DESCRIPTION		UNIT	QUANTITY
	Shredded Hardwood Bark Mulch		CY	40
	Heavy Duty Erosion Control Blanket		SY	217

### Planting Notes

1. Tree mulch rings are 5' diameter, typ.
2. Place erosion control blanket along all slopes greater than 4 to 1 and all swales.
3. Do not locate plants within 10' of utility structures. Do not locate plants within 5' horizontally of underground utility lines.
4. Fertilizer shall be bone meal with an approximate analysis of 4% nitrogen and 20% phosphorus or commercial blend fertilizer 10-10-10, applied per manufacturer recommendation.
5. Apply commercial pre-emergent herbicide (swap shot or equal) per manufacturer's recommendation to entire landscape bed.

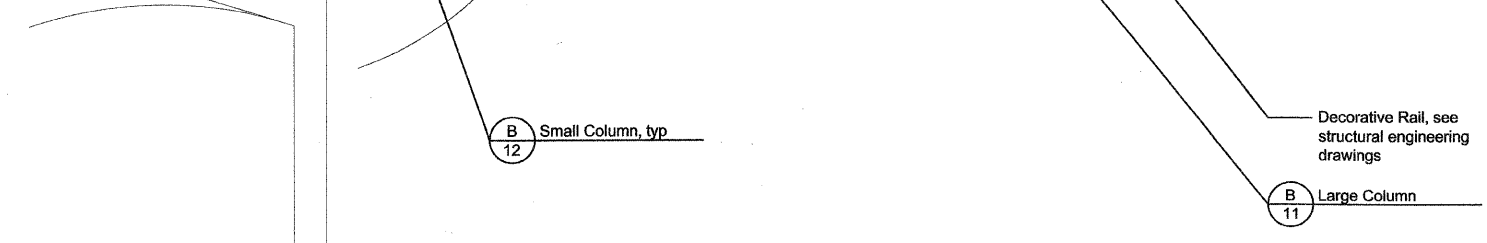
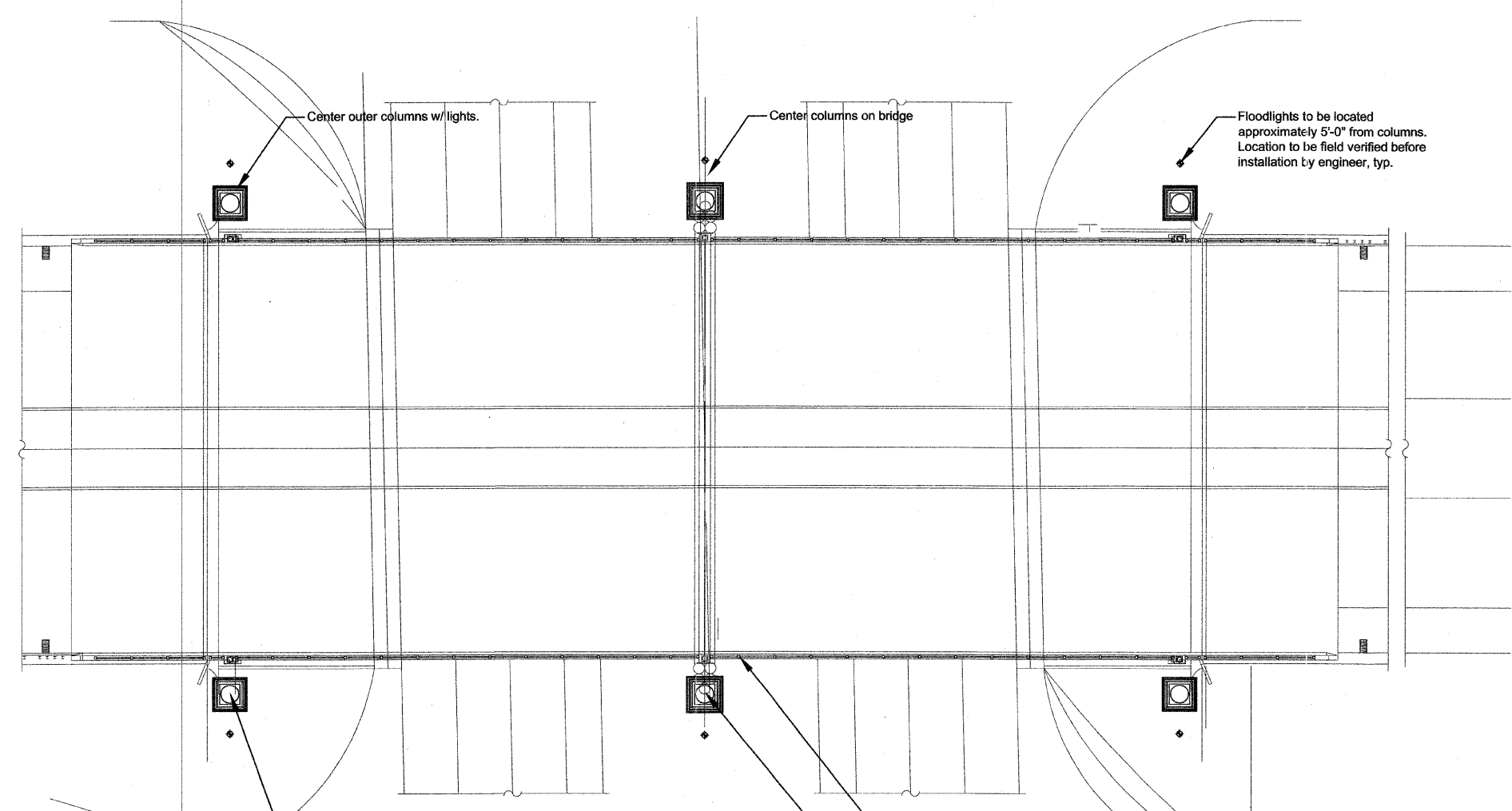
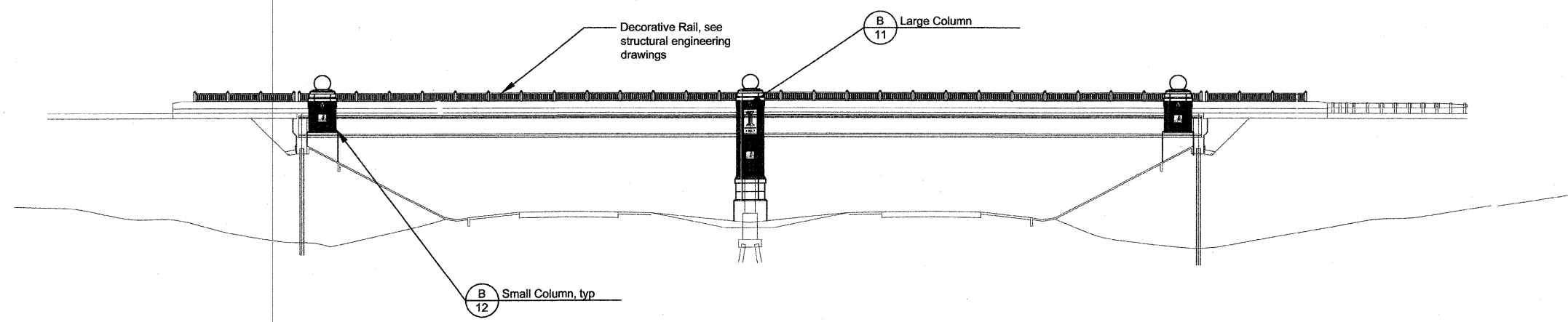
REVISIONS	
NAME	DATE

ILLINOIS DEPARTMENT OF TRANSPORTATION

## PLANTING DETAILS

SCALE: AS NOTED DRAWN BY: JMN  
DATE 06/15/07 CHECKED BY: MEU

F.A.I. RTE.	SECTION	COUNTY	TOTAL SHEETS	SHEET NO.
57	00-00374-03-LS	Champaign	21	10
STA.		TO STA.		
FED. ROAD DIST. NO. 7	ILLINOIS	FED. AID PROJECT		
CONTRACT NO. 91382				



REVISIONS	
NAME	DATE

ILLINOIS DEPARTMENT OF TRANSPORTATION

**MATERIALS PLAN**

SCALE: 1/16" = 1'-0"

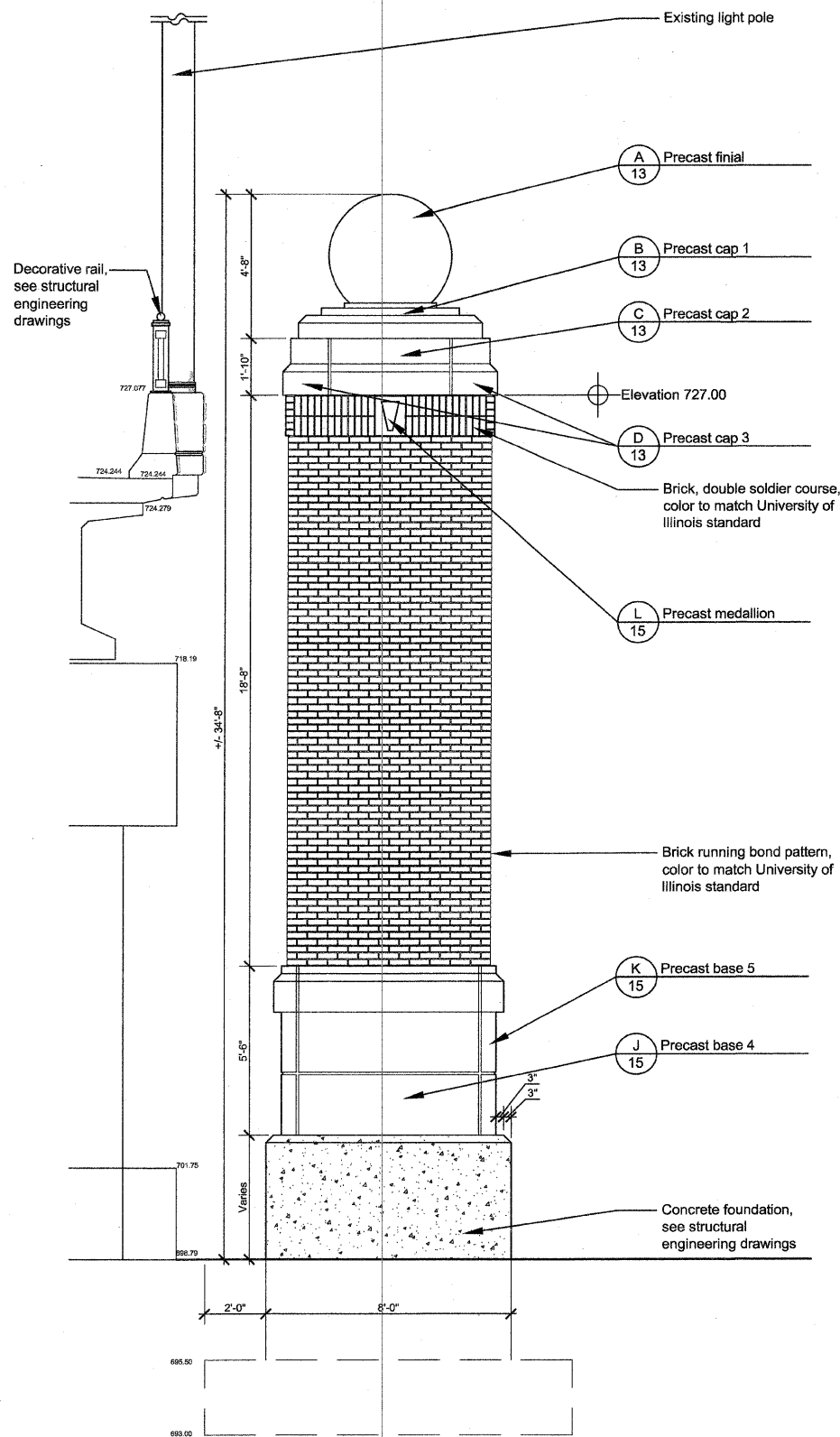
DATE 06/15/07

DRAWN BY: JMN

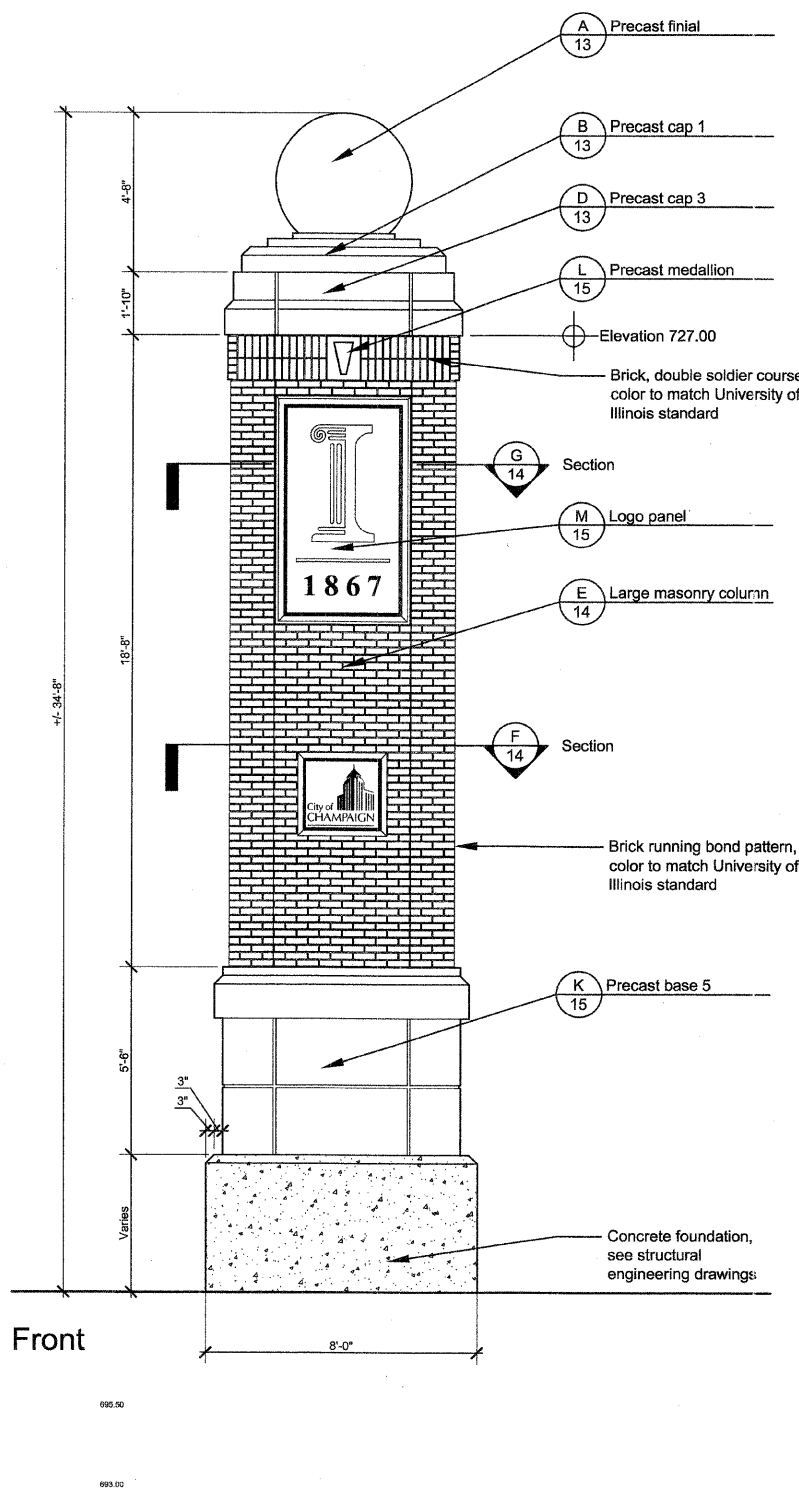
CHECKED BY: MEU

F.A.I. RTE:	SECTION	COUNTY	TOTAL SHEETS	SHEET NO.
57	00-00374-03-LS	Champaign	21	11
STA.		TO STA.		
FED. ROAD DIST. NO. 7		ILLINOIS		FED. AID PROJECT
CONTRACT NO. 91362				

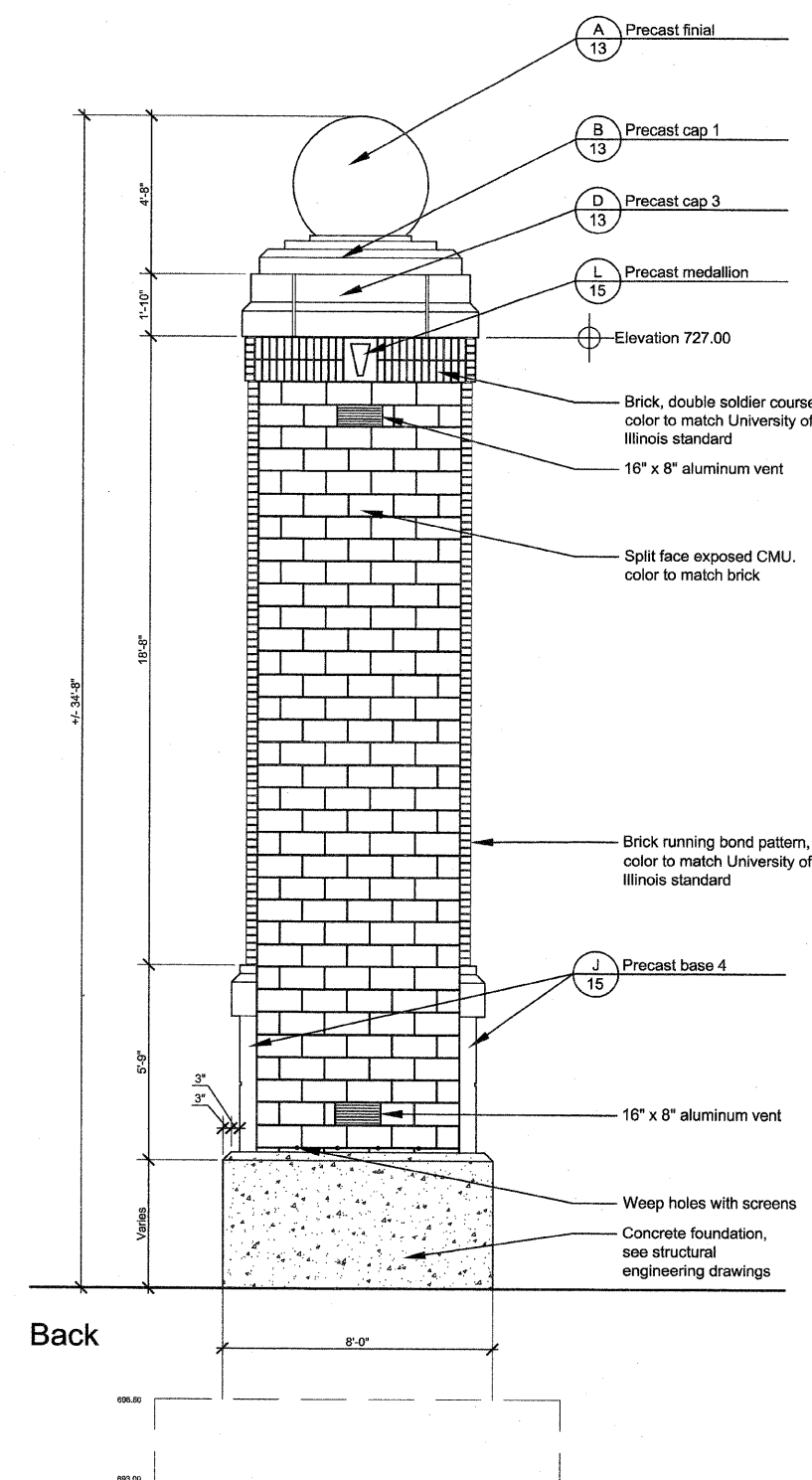
Note: Brick & precast colors to match University of Illinois standards



**A** Large Column- Side Elevation d-largecolumn-elev.dwg  
3/8" = 1'-0"



**B** Large Column- Front and Back Elevations d-lg-col-side-elv.dwg  
3/8" = 1'-0"

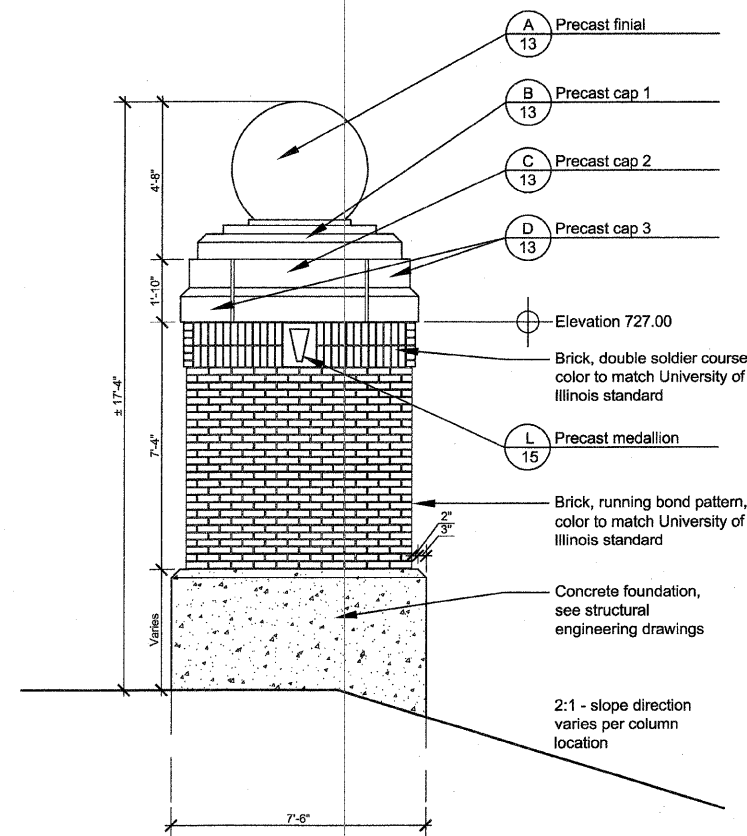


REVISIONS		ILLINOIS DEPARTMENT OF TRANSPORTATION
NAME	DATE	
		LARGE COLUMN DETAILS

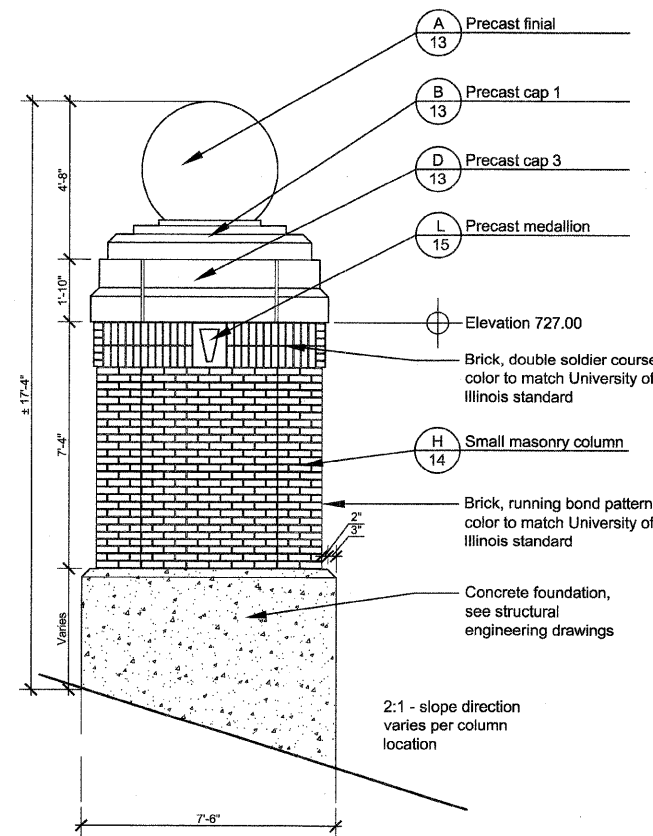
SCALE: AS NOTED  
DATE: 06/15/07

DRAWN BY: JMN  
CHECKED BY: MEU

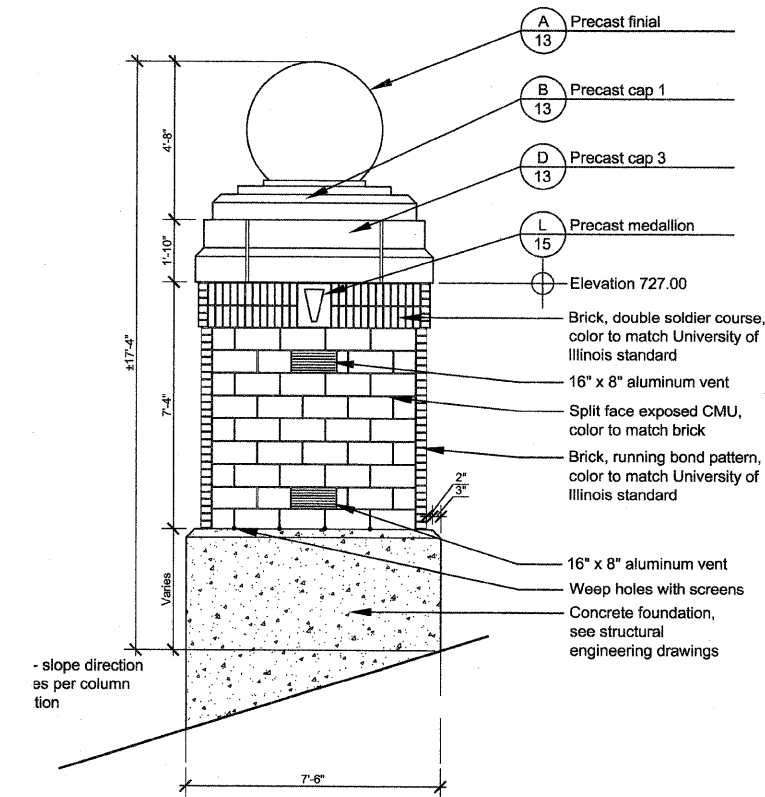
Note: Brick & precast colors to match University of Illinois standards



**A** Small Column- Side Elevation d-smallcolumn-elv.dwg  
3/8" = 1'-0"



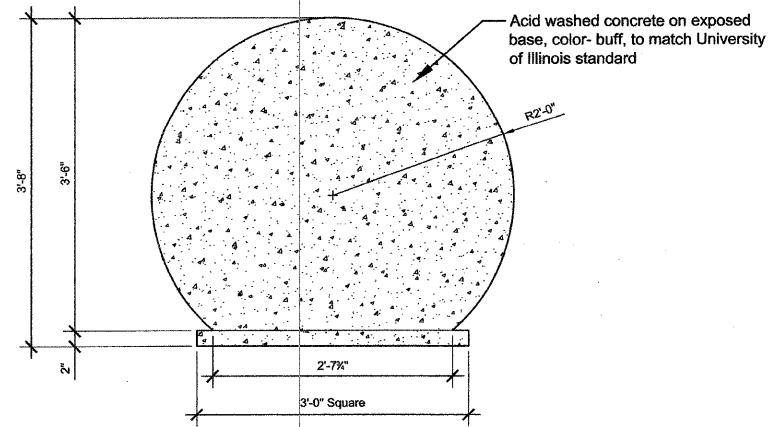
**B** Small Column- Front Elevation d-smallcolumn-elv.dwg  
3/8" = 1'-0"



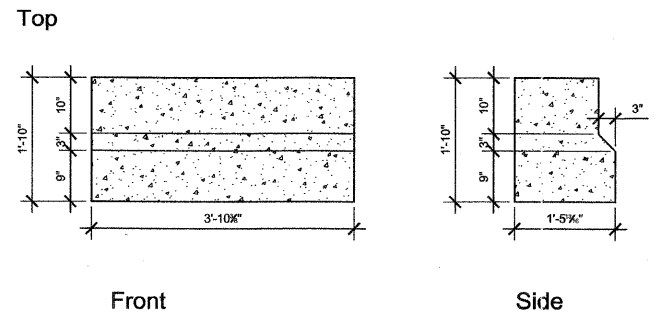
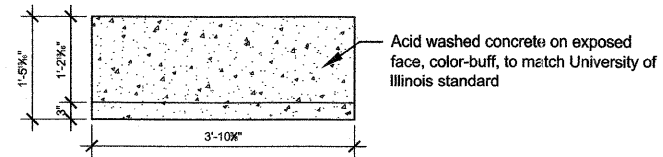
**C** Small Column- Rear Elevation d-smallcolumn-elv.dwg  
3/8" = 1'-0"

REVISIONS	
NAME	DATE

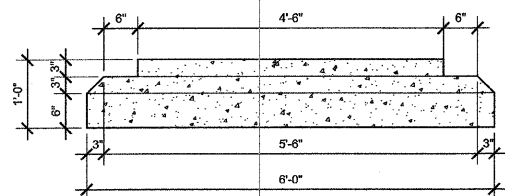
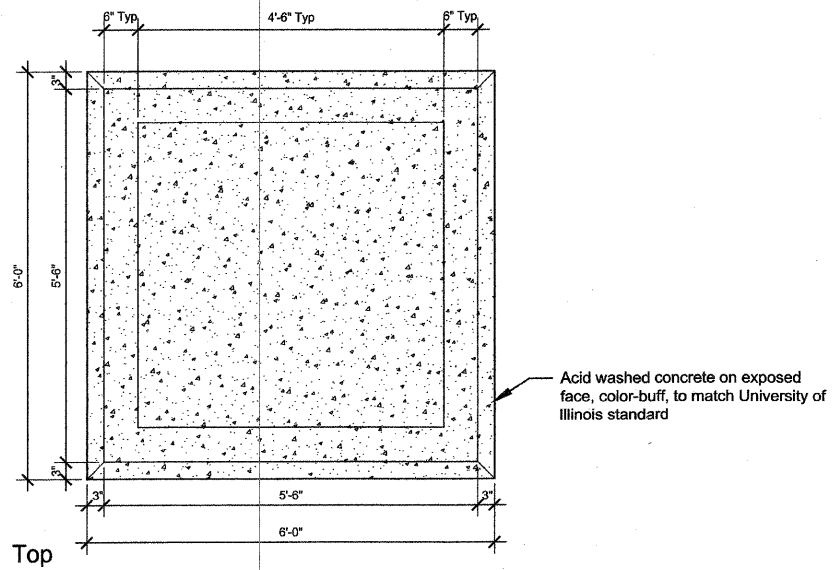
ILLINOIS DEPARTMENT OF TRANSPORTATION  
**SMALL COLUMN DETAILS**  
 SCALE: AS NOTED  
 DATE: 06/15/07  
 DRAWN BY: JMN  
 CHECKED BY: MEU



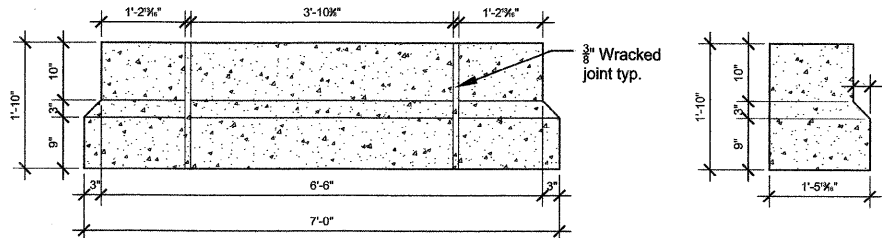
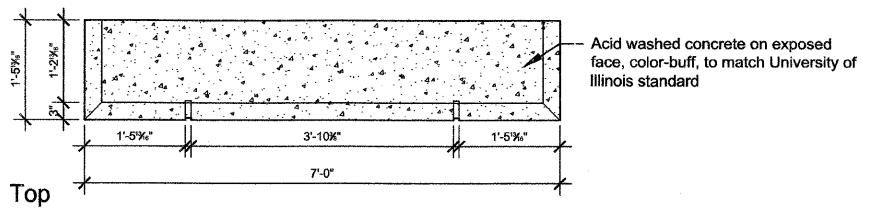
**A** Precast Finial d-precast finial  
1" = 1'-0"



**C** Precast Cap 2 d-precast panel B  
3/4" = 1'-0"

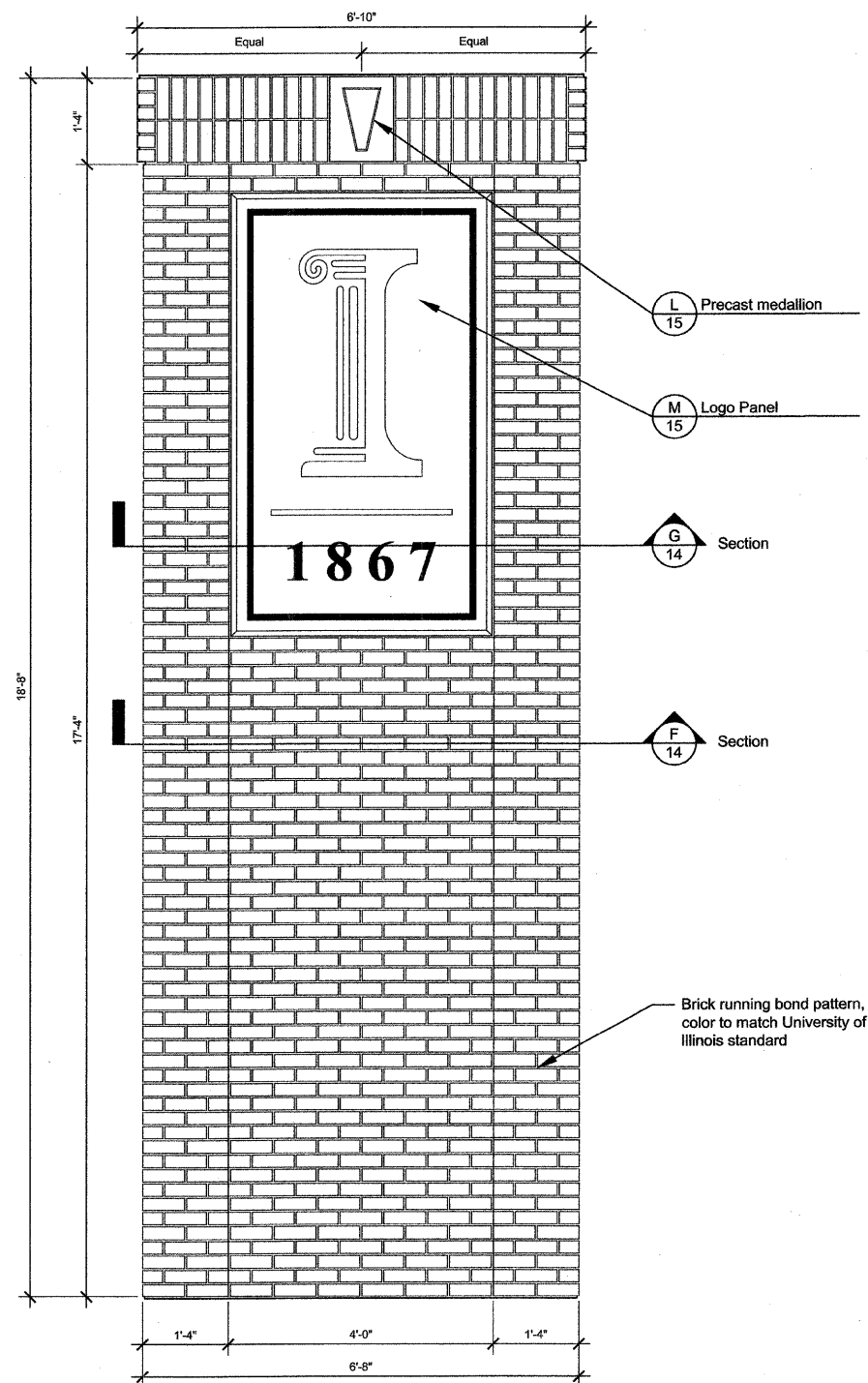


**B** Precast Cap 1 d-precast cap A  
3/4" = 1'-0"

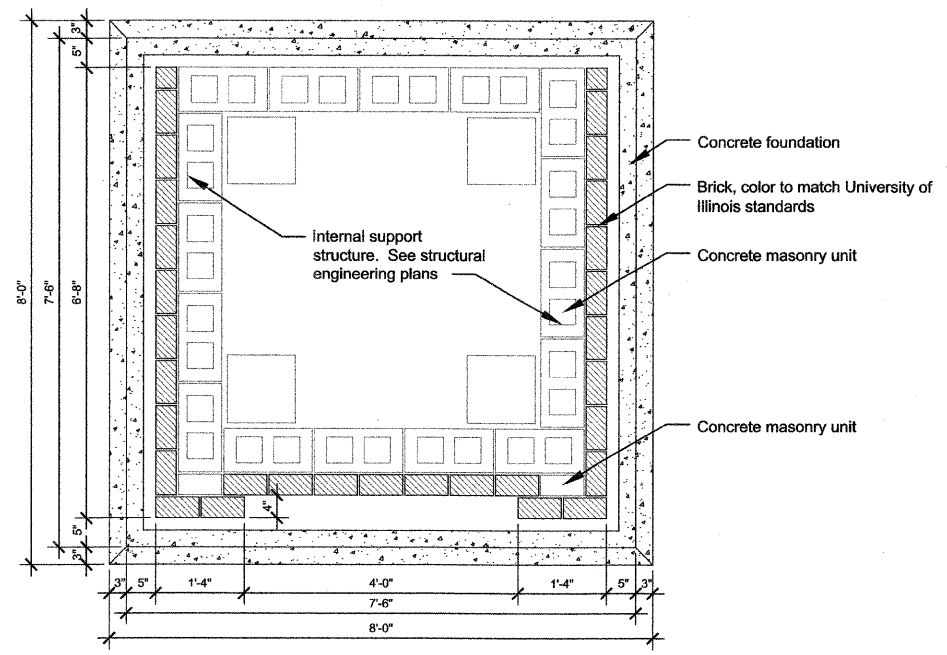


**D** Precast Cap 3 d-precast panel C  
3/4" = 1'-0"

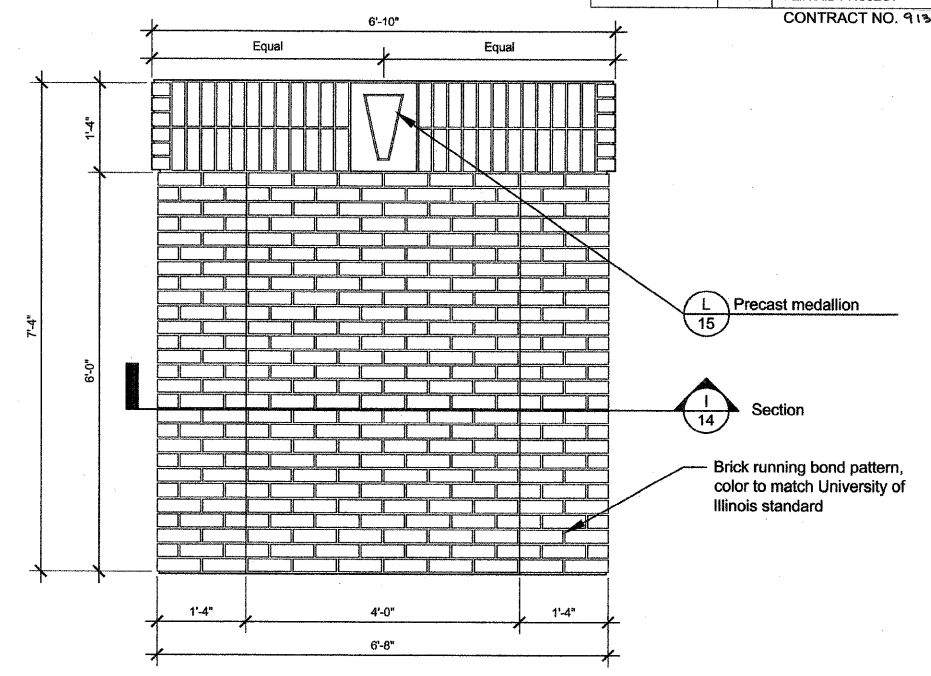
REVISIONS	
NAME	DATE



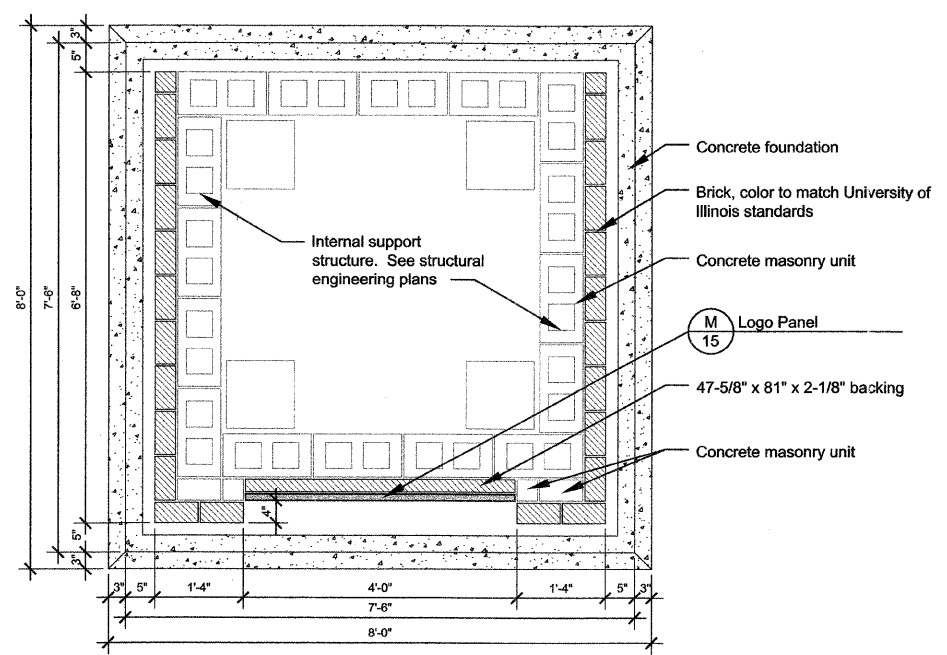
**E** Large Masonry Column Elevation d-lgcol-ctr  
3/4" = 1'-0"



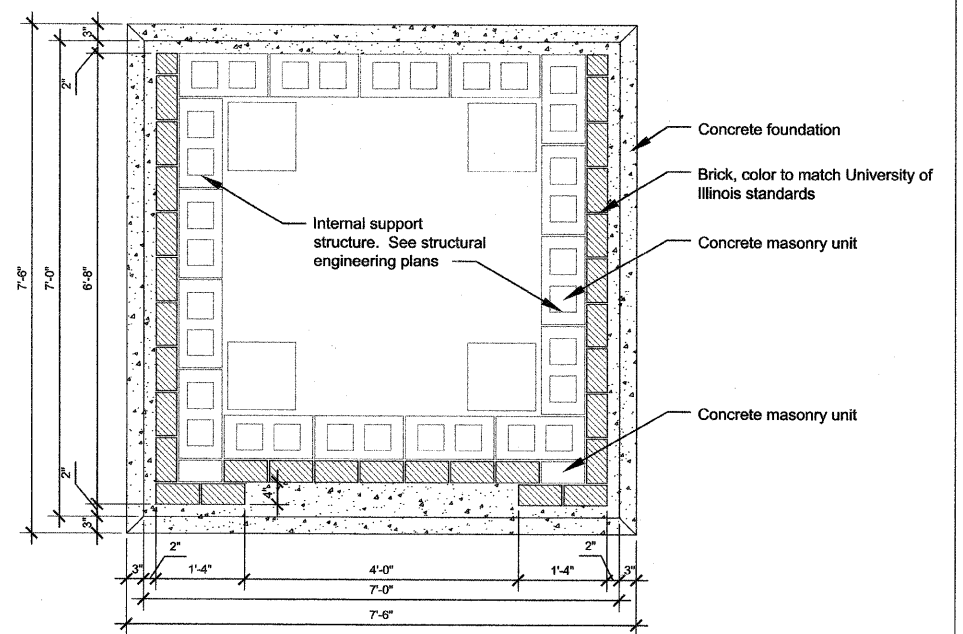
**F** Large Column- Plan View Section d-largecolumn-plan  
3/4" = 1'-0"



**H** Small Masonry Column Elevation d-scol-ctr  
3/4" = 1'-0"



**G** Large Column w/ Logo- Plan View Section d-largecolumn-plan-logo  
3/4" = 1'-0"

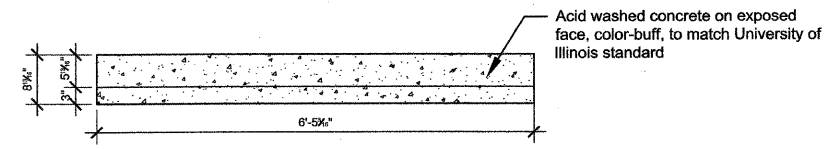


**I** Small Column- Plan View Section d-smallcolumn-plan  
3/4" = 1'-0"

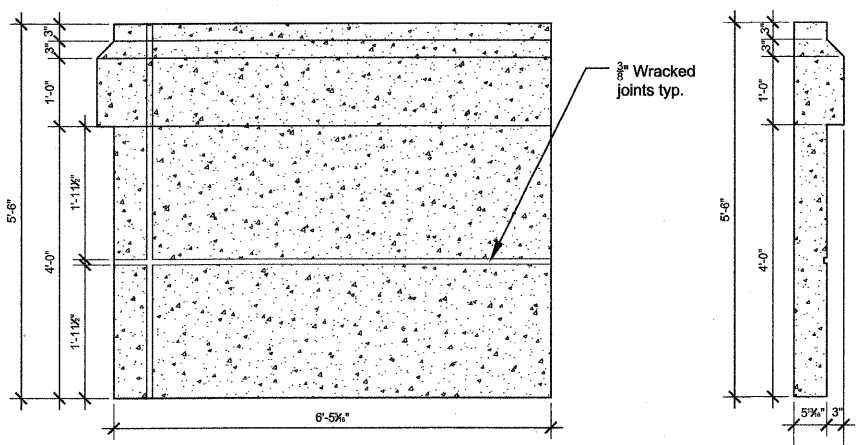
REVISIONS		ILLINOIS DEPARTMENT OF TRANSPORTATION
NAME	DATE	
		COLUMN DETAILS

SCALE: DATE 06/15/07

DRAWN BY: JMN  
CHECKED BY: MEU



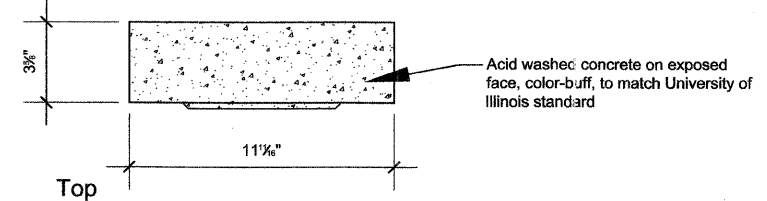
Top



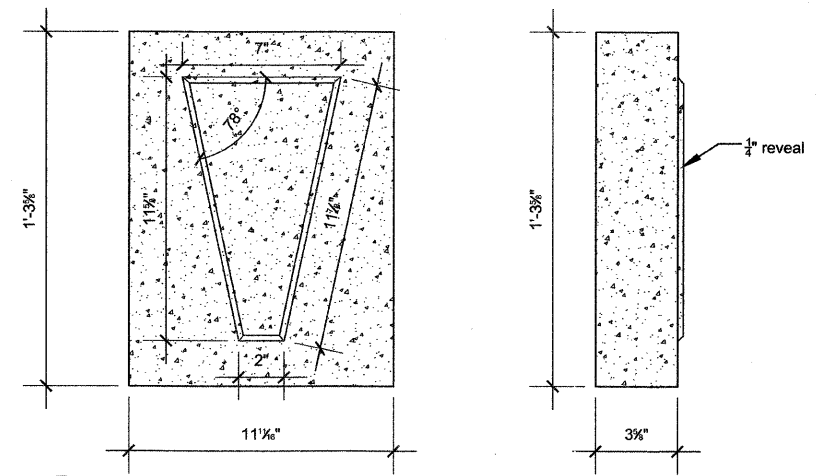
Front

Side

**J** Precast Base 4 d-precast panel D  
3/4" = 1'-0"



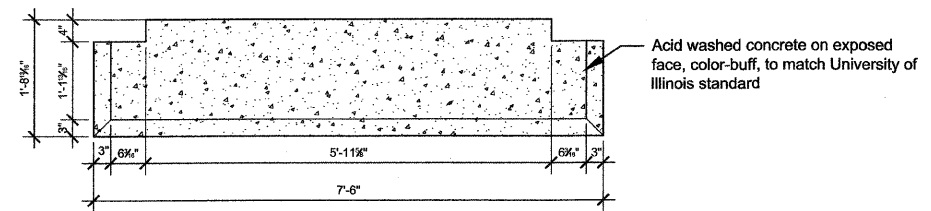
Top



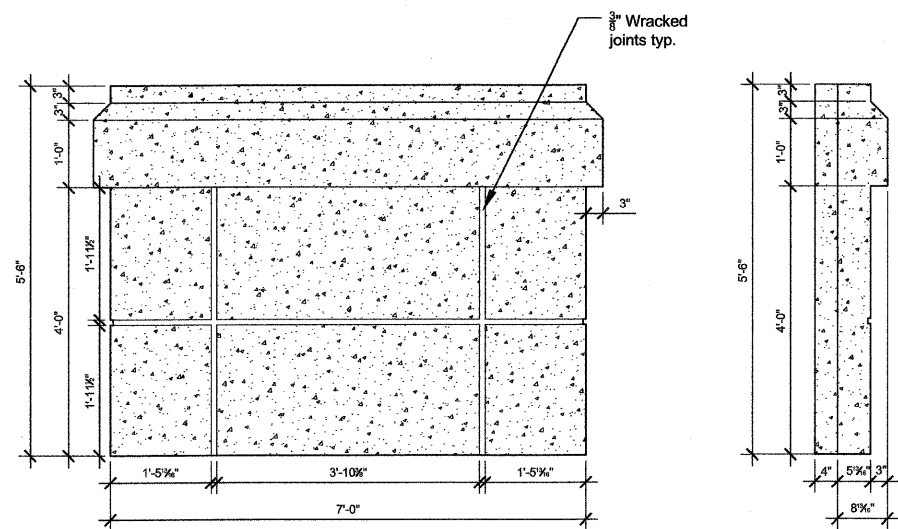
Front

Side

**L** Precast Medallion d-precast medallion  
3" = 1'-0"



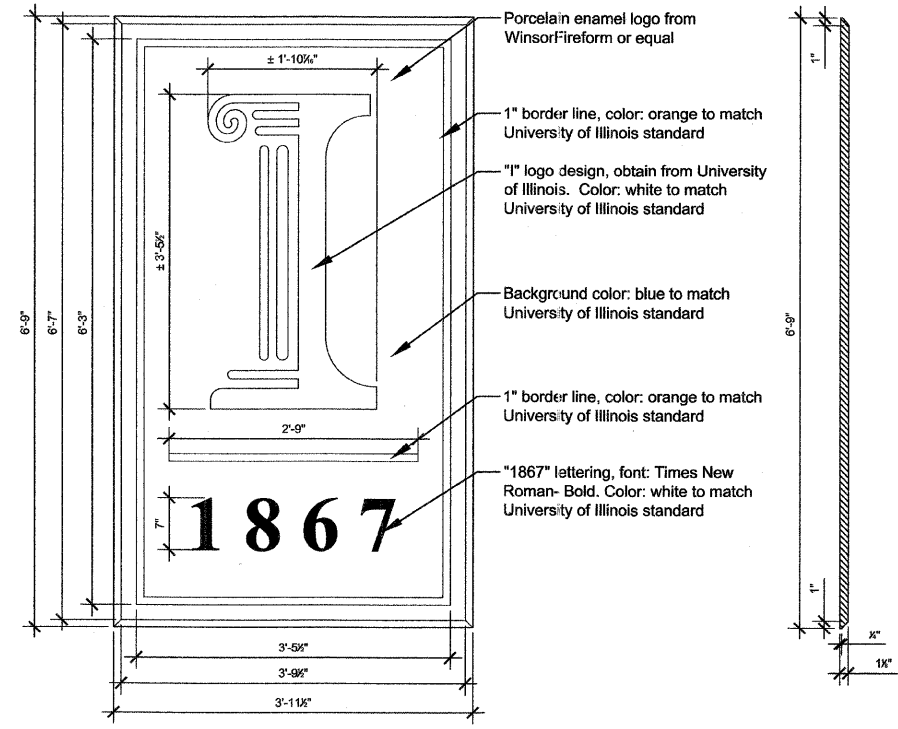
Top



Front

Side

**K** Precast Base 5 d-precast panel E  
3/4" = 1'-0"



Front

Side

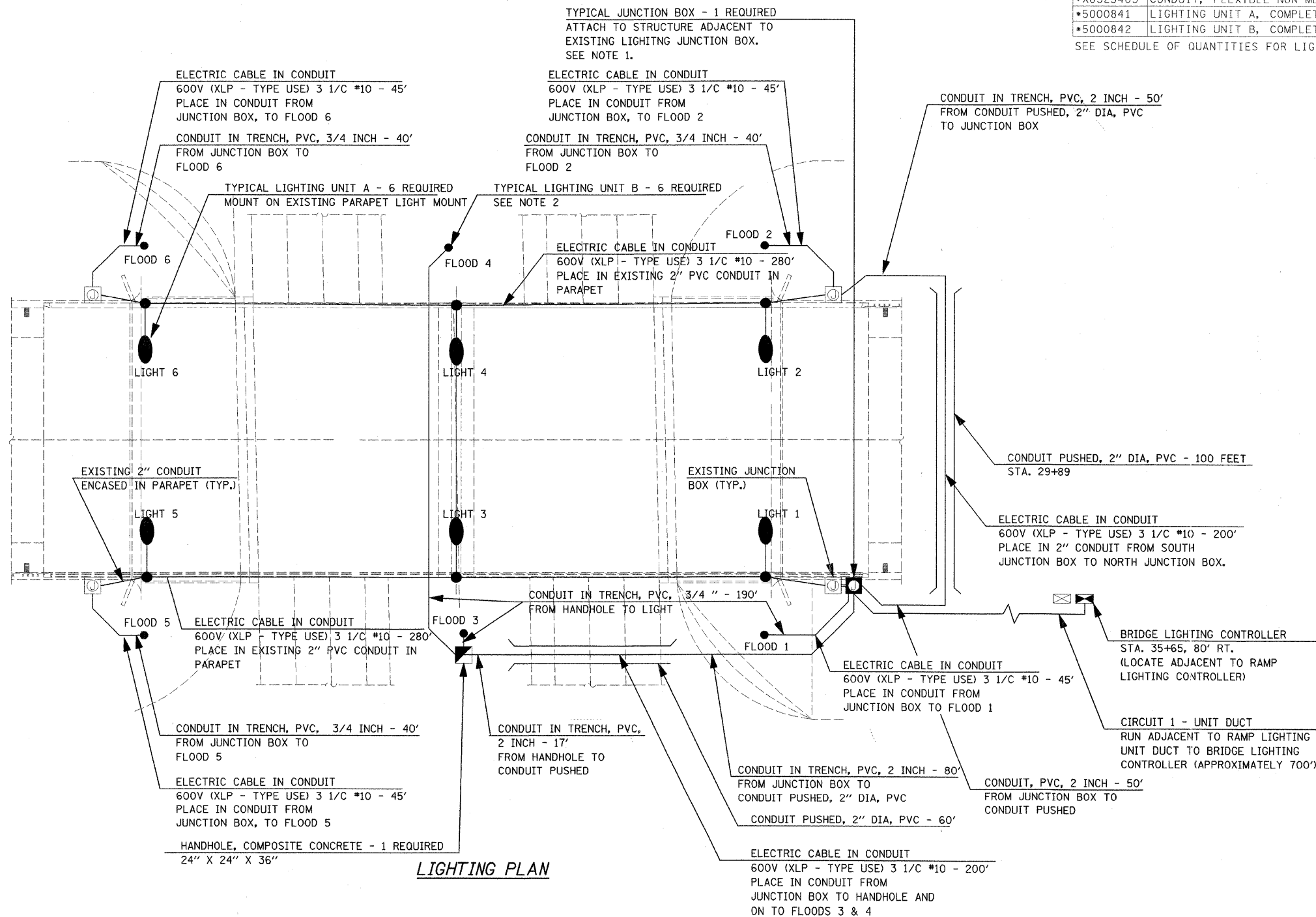
**M** Logo Panel d-logo panel  
1" = 1'-0"

REVISIONS	
NAME	DATE

## BRIDGE LIGHTING BILL OF MATERIALS

CODE NO.	DESCRIPTION	UNIT	QUANTITY
80400100	ELECTRIC SERVICE INSTALLATION	LUMP SUM	1
81012200	CONDUIT IN TRENCH, 3/4" DIA. PVC	FOOT	317
81012600	CONDUIT IN TRENCH, 2" DIA. PVC	FOOT	205
81021330	CONDUIT PUSHED, 2" DIA. PVC	FOOT	160
81300800	JUNCTION BOX, SS, ATTACH TO STRUCT., 18" X 12" X 6"	EACH	1
81400730	HANDHOLE, COMPOSITE CONCRETE	EACH	1
81603035	UNIT DUCT, 600V, 2-1C NO. 6, 1/C NO. 6 GROUND (XLP-TYPE USE), 1" DIA. POLYETHYLENE	FOOT	700
81702450	ELEC. CABLE IN CONDUIT, 600V (XLP-TYPE USE) 3 1/C #10	FOOT	1252
81900200	TRENCH AND BACKFILL FOR ELECTRICAL WORK	FOOT	1171
82500510	LIGHTING CONTROLLER TYPE CB-RCS 60 AMP 240 VOLT	EACH	1
*X0325403	CONDUIT, FLEXIBLE NON-METALLIC, WEATHERPROOF, 2"	EACH	4
*5000841	LIGHTING UNIT A, COMPLETE	EACH	6
*5000842	LIGHTING UNIT B, COMPLETE	EACH	6

SEE SCHEDULE OF QUANTITIES FOR LIGHTING SCHEDULE



**LIGHTING PLAN**

**NOTES:**

- BRING CIRCUITS UP INTO JUNCTION BOX THROUGH RIGID CONDUIT IN TRENCH. CONNECT CONDUITS TO JUNCTION BOX WITH LIQUID TIGHT FLEXIBLE CONDUIT (6' MAX LENGTH) TO ACCOMMODATE MOVEMENT OF PARAPET WALL WITH RESPECT TO THE CONDUIT PENETRATING THE GROUND. CONNECT JUNCTION BOXES TOGETHER WITH 2-2" NIPPLES.
- COORDINATE FINAL FIXTURE LOCATION AND AIMING WITH ENGINEER IN THE FIELD. FLOODS 3 & 4 AND ASSOCIATED HANDHOLES SHALL BE OFFSET 3' FROM COLUMN CENTERLINE TO BE OUT OF DITCH FLOWLINE. LAMPS FOR FLOODS 1,2,5, & 6 SHALL BE 70W M.H. LAMPS FOR FLOODS 3 & 4 SHALL BE 100W M.H.

REVISIONS	
NAME	DATE

ILLINOIS DEPARTMENT OF TRANSPORTATION

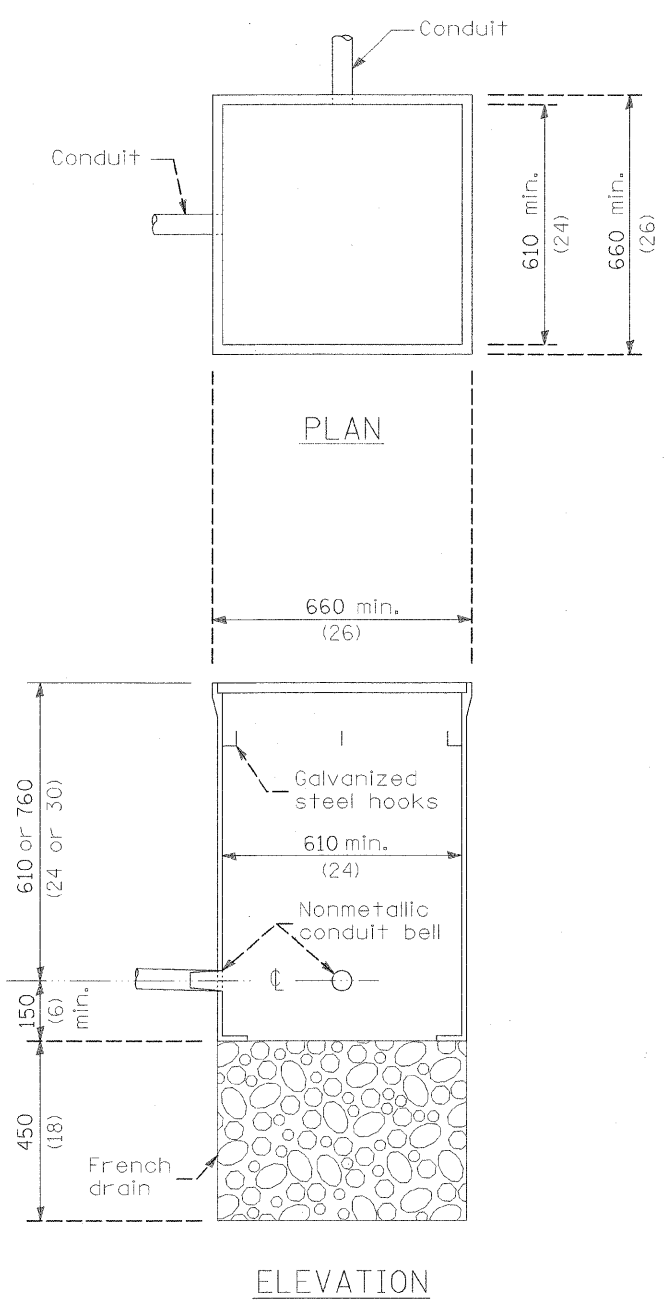
## LIGHTING PLAN

SCALE: As Noted  
DATE: 01/04/08

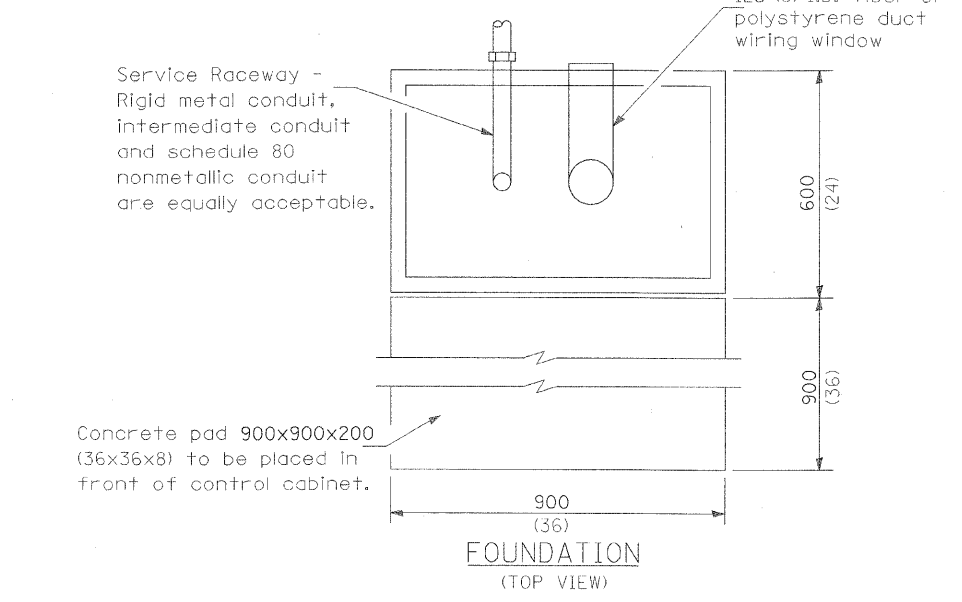
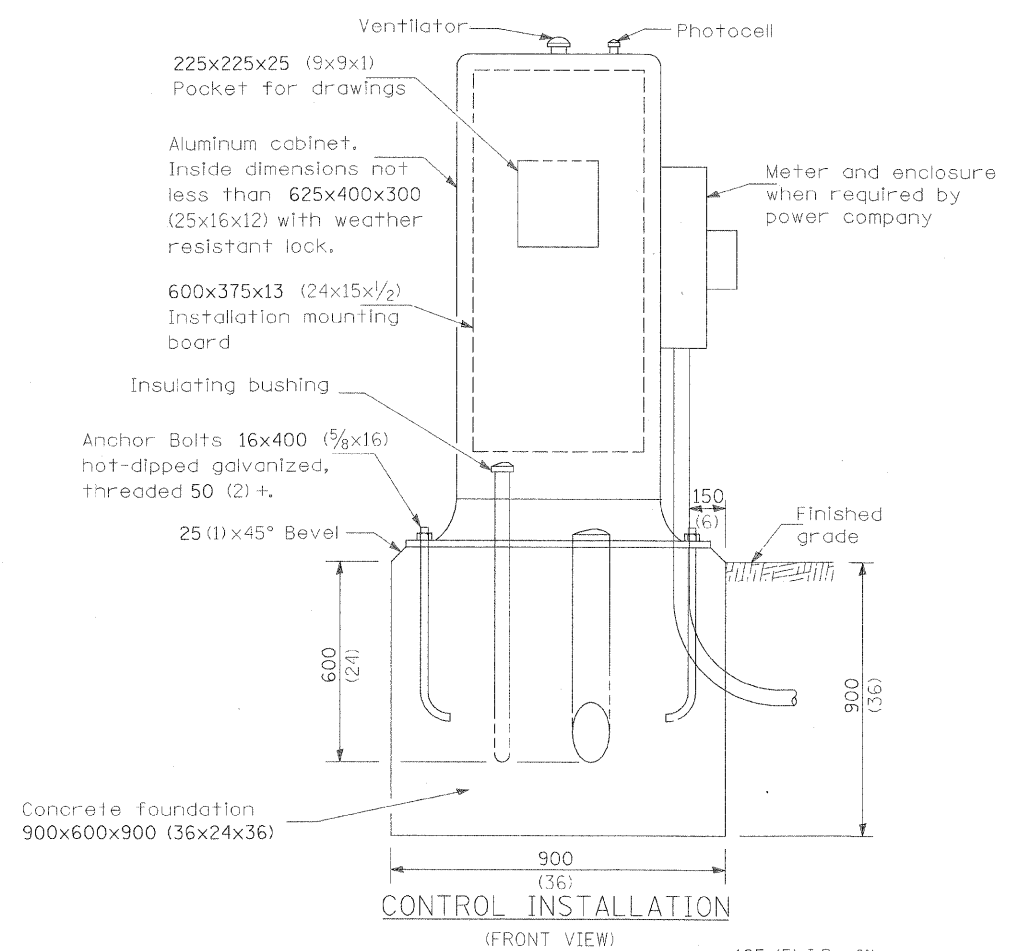
DRAWN BY RS  
CHECKED BY MTP

DESIGN FIRM REGISTRATION  
No. 184-000450  
118 SOUTH CLINTON STREET  
SUITE 600  
CHICAGO, IL 60661  
PHONE : 312.648.8900  
FAX : 312.648.0234

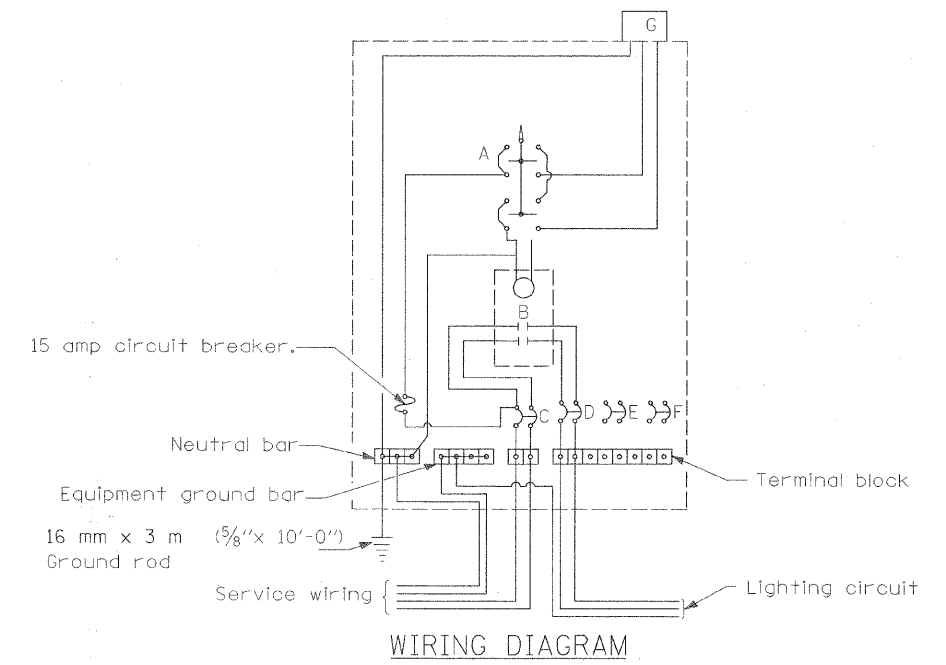




HANDHOLE, COMPOSITE CONCRETE



- A Selector switch (Hand, Off, Auto)
- B 2 Pole 60 amp contactor
- C 2 Pole 60 amp service disconnect
- D 2 Pole 20 amp breaker
- E,F 2 Pole 30 amp breakers
- G Photocell w/integral surge arrester



WIRING DIAGRAM

GENERAL NOTES

Locate service pole and control installation adjacent to R.O.W. line with a minimum distance of 9 m (30') from the edge of pavement. Exact location shall be established by the Engineer.

The underground service entrance wiring shall not exceed 46 m (150'). Total aerial and underground service between the control installation and primary transformer shall not exceed 76 m (250').

Raceways shall terminate 75 (3) above top of concrete foundation.

For 480 V. systems, a 480/120 V. control transformer will be required.

All dimensions are in millimeters unless otherwise shown.

- ☒ 240 V. SERVICE
- ☐ 480 V. SERVICE

REVISIONS	
NAME	DATE

ILLINOIS DEPARTMENT OF TRANSPORTATION

## LIGHTING DETAILS

SCALE: As Noted  
DATE: 01/04/08

DRAWN BY RS  
CHECKED BY MTP

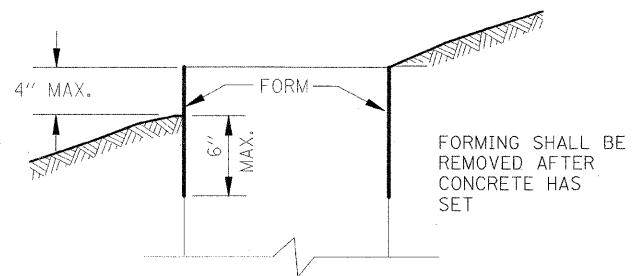
**Clark Dietz**  
ENGINEERS

DESIGN FIRM REGISTRATION  
No. 184-000450  
118 SOUTH CLINTON STREET  
SUITE 600  
CHICAGO, IL 60661  
PHONE : 312.648.8900  
FAX : 312.648.0204

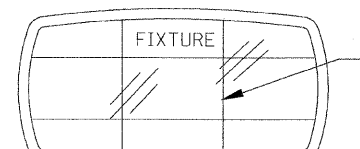
F.A. RTE.	SECTION	COUNTY	TOTAL SHEETS	SHEET NO.
I-57	00-00374-03-LS	CHAMPAIGN	21	18
STA.		TO STA.		
FED. ROAD DIST. NO.	ILLINOIS	FED. AID PROJECT		

CONTRACT NO. 91382

FORM DEPTH SHALL BE NO MORE THAN 6" BELOW GRADE ON THE LOWER SIDE OF BASE



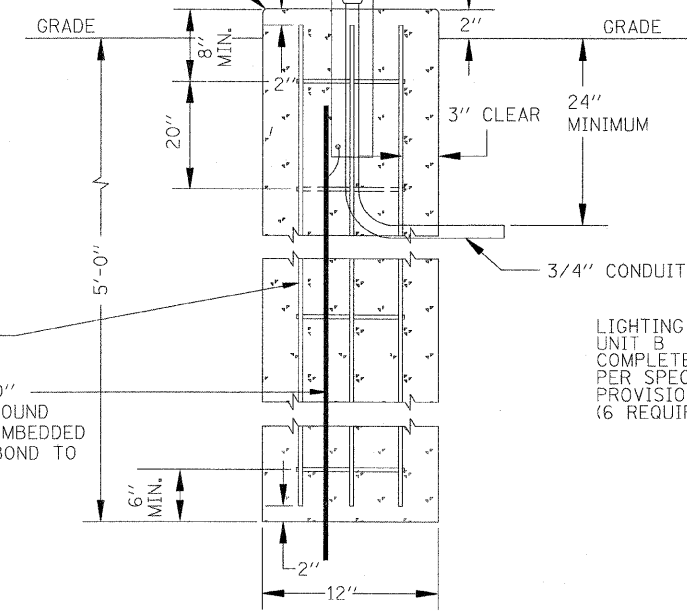
FORMING DETAIL



WP ELECTRICAL CONNECTION SHALL BE MADE WITHIN KNUCKLE.  
18" STANCHION.

BUSHING

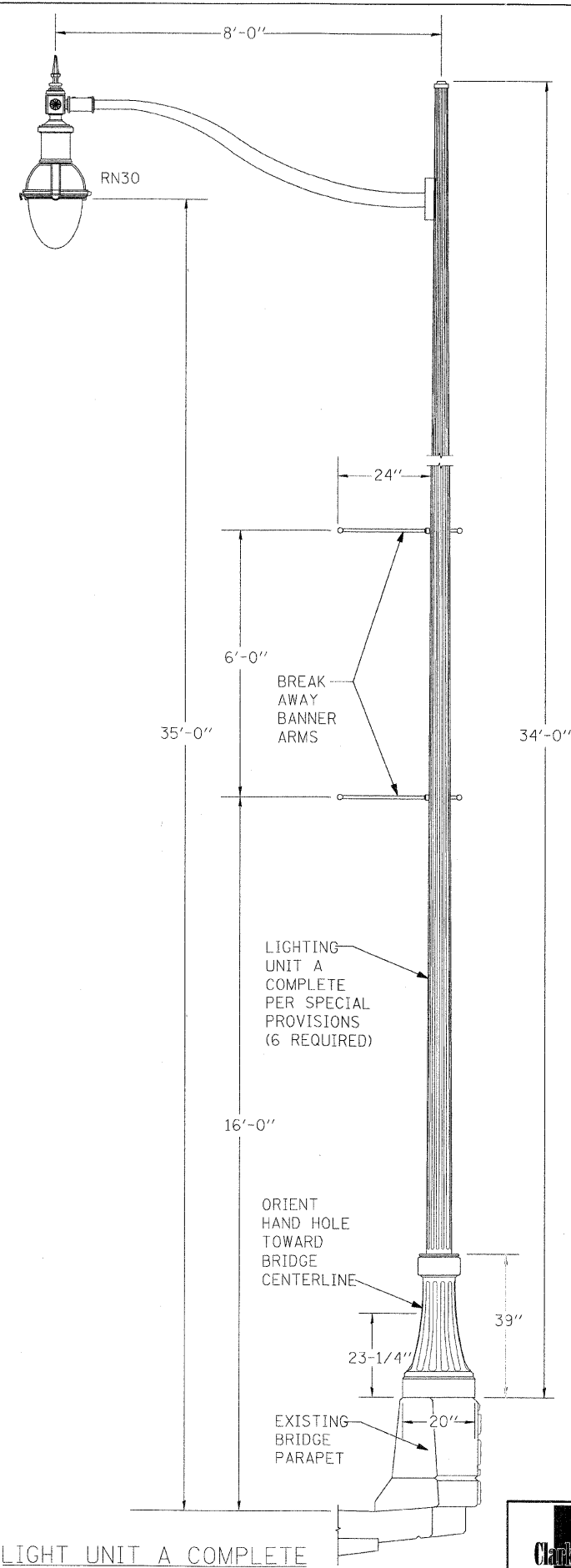
FORM ALL EXPOSED CONCRETE. PROVIDE 3/4" RADIUS BULLNOSE ALL AROUND.



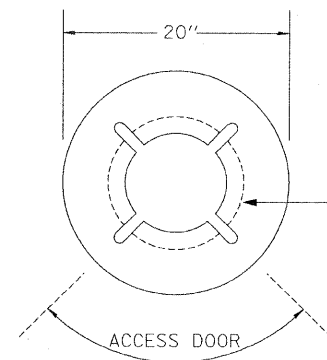
#4 REBAR TYPICAL.  
3/4" DIA. x 10'-0" COPPERCLAD GROUND ROD TOTALLY EMBEDDED IN CONCRETE. BOND TO STANCHION.

LIGHTING UNIT B COMPLETE PER SPECIAL PROVISIONS (6 REQUIRED)

LIGHT UNIT B, COMPLETE



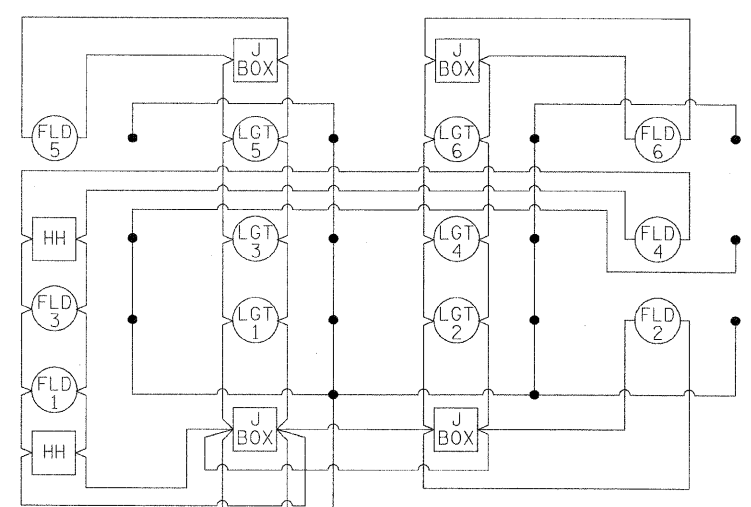
LIGHT UNIT A COMPLETE



COORDINATE BOLT CIRCLE WITH EXISTING PARAPET LIGHT POLE MOUNT AND BASE MANUFACTURER

STREET SIDE

BASE ORIENTATION DIAGRAM



WIRING DIAGRAM CIRCUIT 1

NOTES:

PROVIDE CIRCUITING PER PLAN.

PROVIDE TWIN FUSE HOLDER IN EACH POLE BASE. PROVIDE FUSES PER MANUFACTURER'S RECOMMENDATIONS.

REVISIONS	
NAME	DATE

ILLINOIS DEPARTMENT OF TRANSPORTATION

**LIGHTING DETAILS**

SCALE: As Noted  
DATE: 01/04/08

DRAWN BY RS  
CHECKED BY MTP

**Clark Dietz**  
ENGINEERS

DESIGN FIRM REGISTRATION  
No. 184-000450  
118 SOUTH CLINTON STREET  
SUITE 600  
CHICAGO, IL 60661  
PHONE : 312.648.9900  
FAX : 312.648.0204

\\CHI-1\PROJECTS\011350\Plans\Lighting\_Sheets.dgn 1/10/2008

## SCHEDULES OF QUANTITIES

### LIGHTING SCHEDULE


LOCATION	LIGHTING UNIT A COMPLETE	LIGHTING UNIT B COMPLETE	CONDUIT, FLEX. NON-METALLIC, WEATHERPRF, 2"	CONDUIT IN TRENCH, 3/4" DIA. PVC	CONDUIT IN TRENCH, 2" DIA. PVC	CONDUIT PUSHED, 2" DIA. PVC	JUNCTION BOX, 18" X 12" X 6"	HANDHOLE, COMPOSITE CONCRETE	TRENCH AND BACKFILL FOR ELECTRICAL WORK	UNIT DUCT	ELEC. CABLE IN CONDUIT, 600V (XLP-TYPE USE) 3 1/C #10
	*5000841 (EACH)	*5000842 (EACH)	*X0325403 (EACH)	81012200 (FOOT)	81012600 (FOOT)	81021330 (FOOT)	81300800 (EACH)	81400730 (EACH)	81900200 (FOOT)	81603035 (FOOT)	81702450 (FOOT)
CURTIS 29+25RT	1	1									
CURTIS 29+25LT	1	1									
CURTIS 28+20RT	1	1		2.0				1			
CURTIS 28+20LT	1	1									
CURTIS 27+15RT	1	1									
CURTIS 27+15LT	1	1									
CURTIS 29+53LT			1		8.0						
CURTIS 29+53RT			1				1				
CURTIS 26+87LT			1								
CURTIS 26+87RT			1								
CURTIS 29+89LT TO 29+89RT						100.0					100.0
CURTIS 29+53RT TO 29+89RT					50.0				50.0		50.0
CURTIS 29+53LT TO 29+89LT					50.0				50.0		50.0
CURTIS 29+53RT TO 35+60RT									700.0	700.0	
CURTIS 29+53RT TO 26+87RT											280.0
CURTIS 29+53LT TO 26+87LT											280.0
CURTIS 29+53RT TO 29+25RT				40.0							45.0
CURTIS 29+53LT TO 29+25LT				50.0					50.0		55.0
CURTIS 26+87RT TO 27+15RT				40.0					40.0		45.0
CURTIS 26+87LT TO 27+15LT				40.0					40.0		45.0
CURTIS 29+53RT TO 28+96RT					80.0				80.0		72.0
CURTIS 28+96RT TO 28+36RT						60.0					60.0
CURTIS 28+36RT TO 28+20RT					17.0				16.0		20.0
CURTIS 28+20RT TO 28+20LT				145.0					145.0		150.0
<b>TOTALS</b>											
UNIT	6	6	4	317.0	205.0	160.0	1	1	1171.0	700.0	1252.0
PAY ITEM	*5000841	*5000842	*X0325403	81012200	81012600	81021330	81300800	81400730	81900200	81603035	81702450

REVISIONS	
NAME	DATE

ILLINOIS DEPARTMENT OF TRANSPORTATION

### LIGHTING SCHEDULE OF QUANTITIES

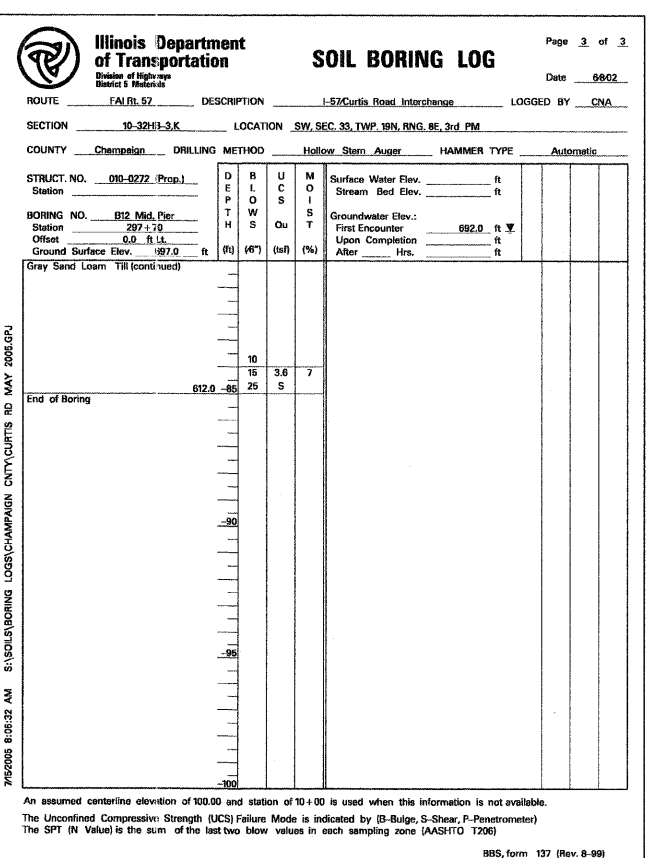
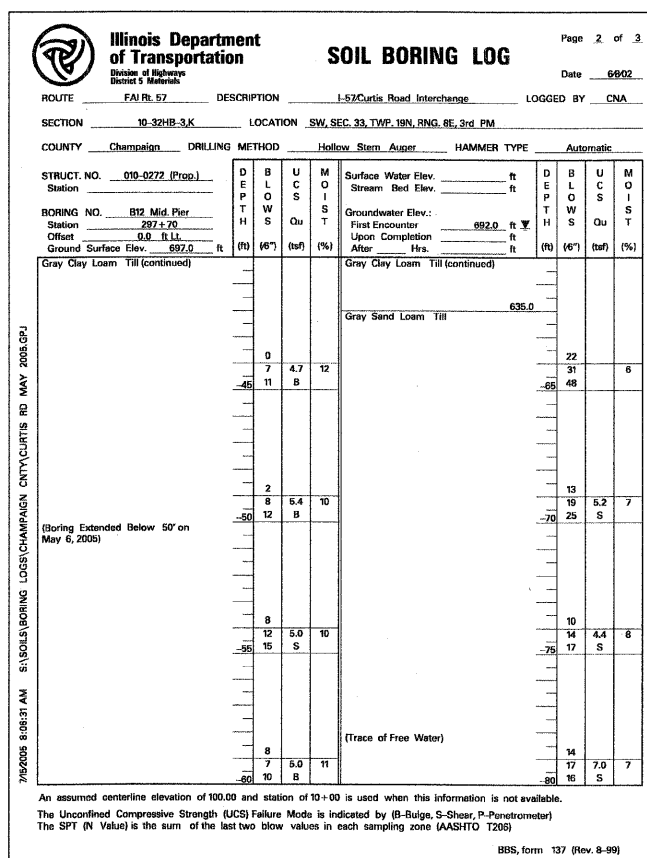
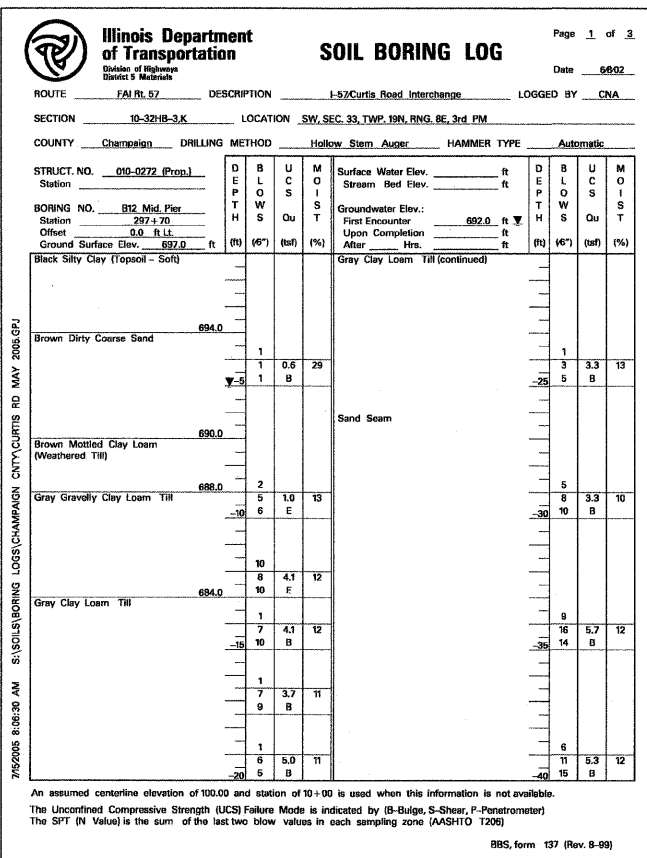
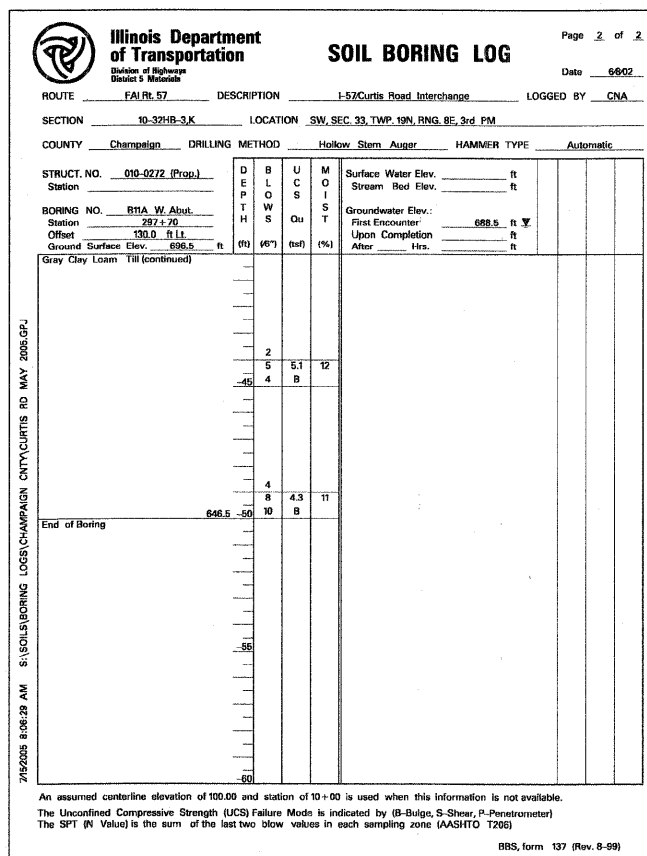
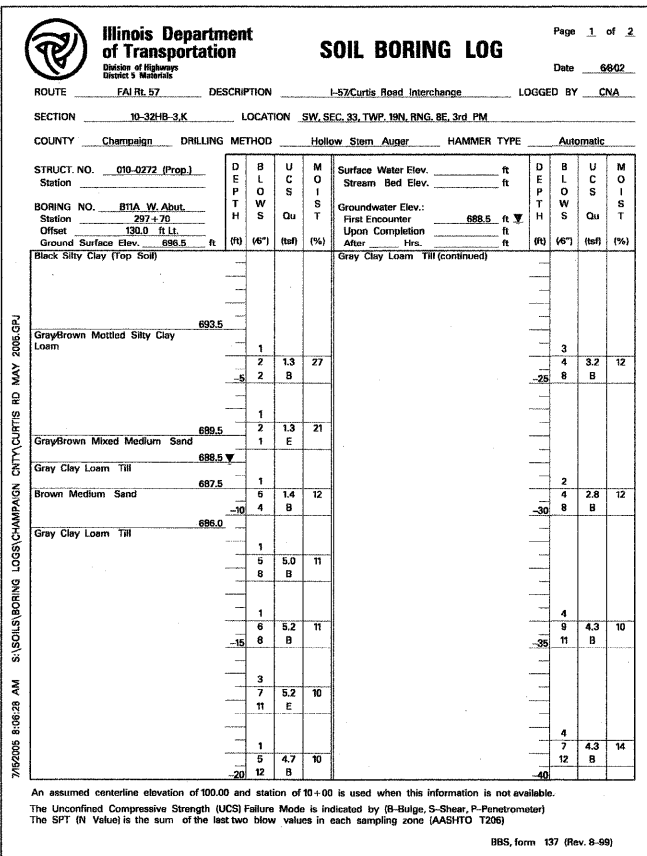
SCALE: As Noted      DRAWN BY: RS  
DATE: 01/04/08      CHECKED BY: MTP



DESIGN FIRM REGISTRATION  
No. 184-000450  
118 SOUTH CLINTON STREET  
SUITE 600  
CHICAGO, IL 60661  
PHONE : 312.648.9900  
FAX : 312.648.0204

\\CH-1\PROJECTS\081350\Plans\sheets\Lighting\_Sheets.dgn 1/15/2008

Contract # 91382



DESIGNED SLD  
CHECKED SMM  
DRAWN SLD  
CHECKED SMM

**SOIL BORINGS**  
**CURTIS ROAD BRIDGE ENHANCEMENTS**  
**CHAMPAIGN COUNTY**  
**STATION 297+20.45**

**Clark Dietz**  
ENGINEERS

DESIGN FIRM REGISTRATION  
No. 184-000450  
1817 SOUTH NEIL STREET  
SUITE 100  
CHAMPAIGN, IL 61820  
PHONE : 217.373.8900  
FAX : 217.373.8923

