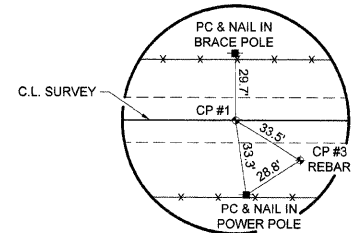
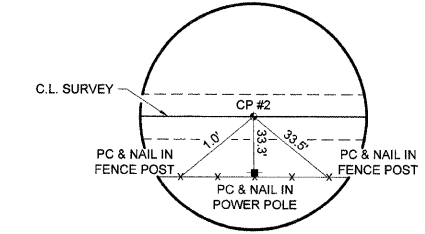


ROUTE NO.	SECTION	COUNTY	TOTAL SHEETS	SHEET NO.
F.A.S. 422 C.H. 24	05 00108- 00-8R	HANCOCK	9	3
ROAD DIST.		ILLINOIS CONNABLE ROAD		

CONTRACT NO.: 93449



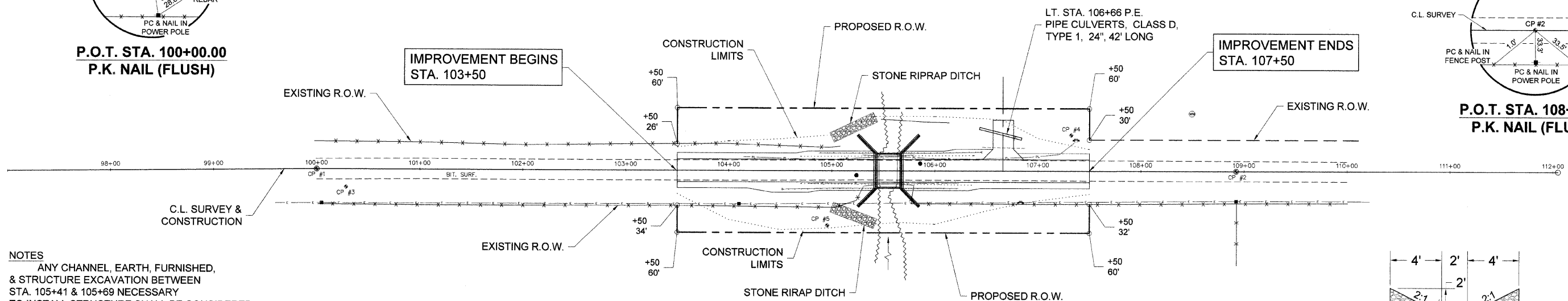
P.O.T. STA. 100+00.00  
P.K. NAIL (FLUSH)



P.O.T. STA. 108+92.36  
P.K. NAIL (FLUSH)

DARIN & ANGELA MILLER

**PIPES TO BE REMOVED**  
(INCIDENTAL TO "EARTH EXCAVATION")  
LT. STA. 106+55, 18" CMP, 42' LONG

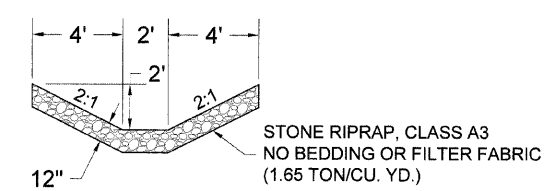


**NOTES**  
ANY CHANNEL, EARTH, FURNISHED, & STRUCTURE EXCAVATION BETWEEN STA. 105+41 & 105+69 NECESSARY TO INSTALL STRUCTURE SHALL BE CONSIDERED INCIDENTAL TO THREE SIDED PRECAST CONCRETE STRUCTURE. SEE SPECIAL PROVISIONS TREE REMOVAL MEASURED FROM STA. 103+50 LT. TO STA. 105+53 LT.

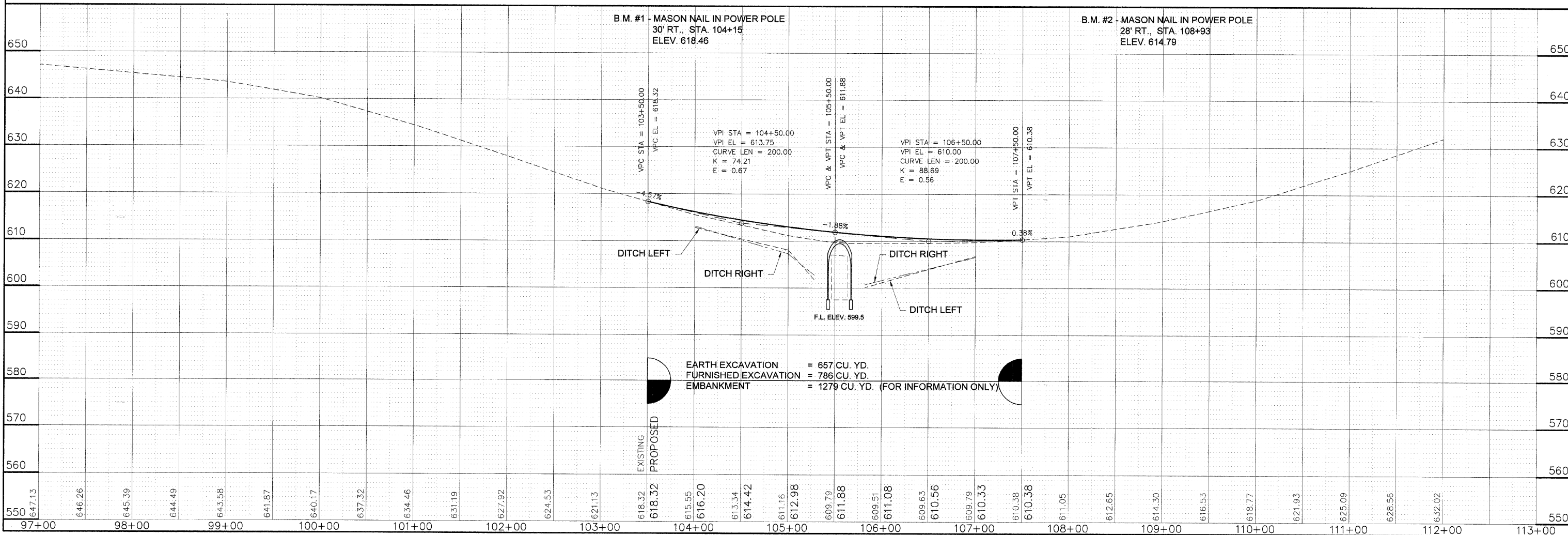
**PROPOSED STRUCTURE**  
STA. 105+55  
12' RISE x 24' SPAN x 34' LENGTH  
THREE-SIDED PRECAST CONCRETE STRUCTURE WITH PRECAST WINGWALLS & HEADWALLS & CAST IN PLACE FOOTINGS.  
0° SKEW  
S.N. 034-3249

MARK A. DILLARD

**EXISTING STRUCTURE**  
SINGLE SPAN STEEL I-BEAM WITH CONCRETE FLOOR ON CLOSED TIMBER ABUTMENTS AND WINGS  
17.5' SPAN  
24.0' ROADWAY



**STONE RIPRAP DITCH**  
LT. STA. 105+00 TO STA. 105+42  
RT. STA. 105+00 TO STA. 105+42  
TOTAL QUANTITY = 56 TONS



SCALES:  
1" = 50' HOR  
1" = 10' VER  
(FULL SIZE)