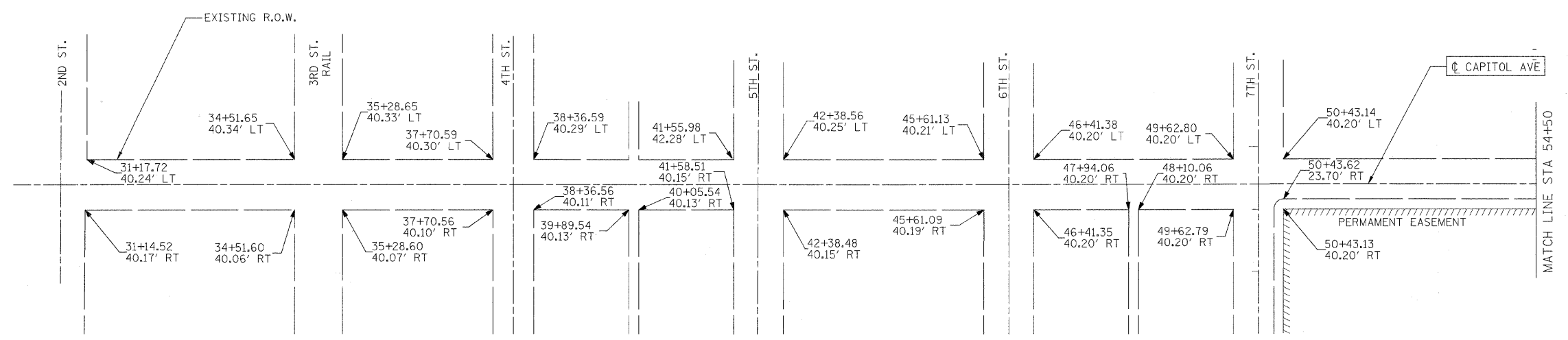


F.A.U. RTE.	SECTION	COUNTY	TOTAL SHEETS	SHEET NO.
7982	*	SANGAMON	114	26
STA.		TO STA.		
FED. ROAD DIST. NO.		ILLINOIS FED. AID PROJECT		
* 05-00447-01-PV		CITY OF SPRINGFIELD		

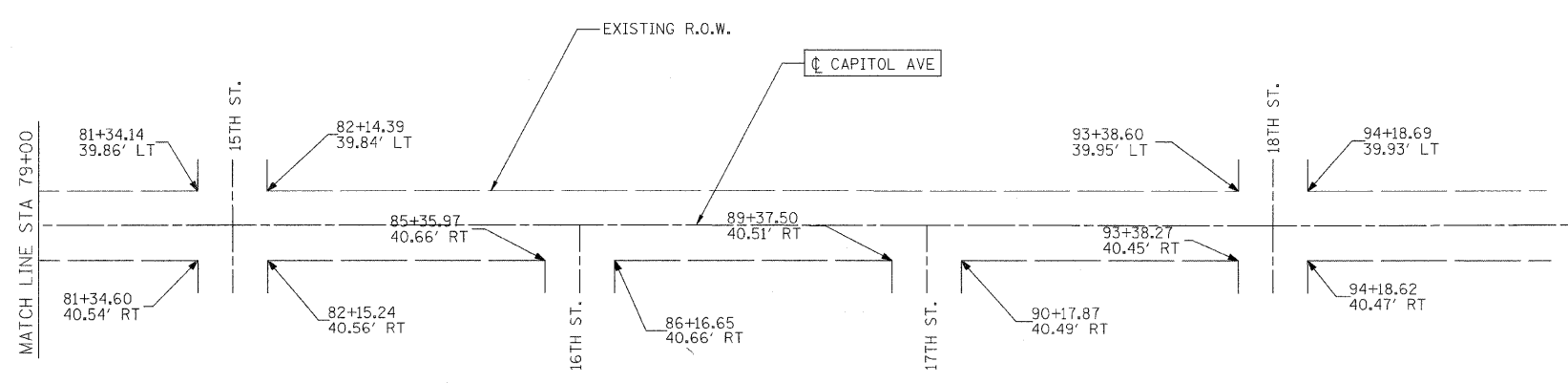
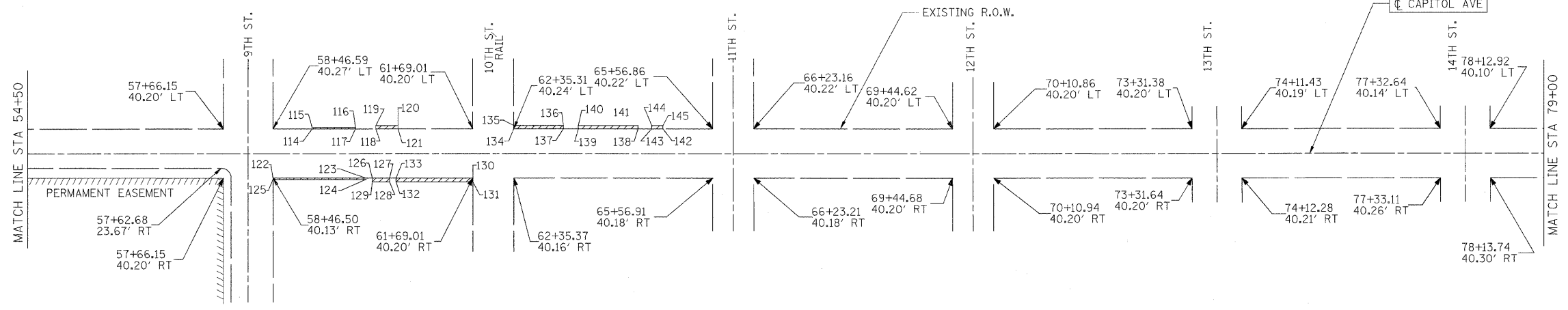


TEMPORARY CONSTRUCTION EASEMENT TABLE

114 STA.	59+09.59	OFFSET:	40.25	LT
115 STA.	59+09.59	OFFSET:	42.25	LT
116 STA.	59+79.59	OFFSET:	42.24	LT
117 STA.	59+79.59	OFFSET:	40.24	LT

PERMANENT LANDSCAPE EASEMENT TABLE

118 STA.	60+12.37	OFFSET:	40.23	LT
119 STA.	60+12.38	OFFSET:	45.23	LT
120 STA.	60+48.38	OFFSET:	45.23	LT
121 STA.	60+48.37	OFFSET:	40.23	LT
122 STA.	58+46.50	OFFSET:	40.13	RT
123 STA.	59+96.50	OFFSET:	40.16	RT
124 STA.	59+96.50	OFFSET:	42.16	RT
125 STA.	58+46.50	OFFSET:	42.13	RT
126 STA.	60+06.51	OFFSET:	40.17	RT
127 STA.	60+34.51	OFFSET:	40.17	RT
128 STA.	60+34.51	OFFSET:	46.17	RT
129 STA.	60+06.51	OFFSET:	46.17	RT
130 STA.	61+69.01	OFFSET:	40.20	RT
131 STA.	61+69.01	OFFSET:	46.20	RT
132 STA.	60+45.01	OFFSET:	46.17	RT
133 STA.	60+45.01	OFFSET:	40.17	RT
134 STA.	62+35.31	OFFSET:	40.24	LT
135 STA.	62+35.31	OFFSET:	45.24	LT
136 STA.	63+15.70	OFFSET:	45.23	LT
137 STA.	63+15.70	OFFSET:	40.23	LT
138 STA.	64+36.28	OFFSET:	40.23	LT
139 STA.	63+39.89	OFFSET:	40.23	LT
140 STA.	63+39.89	OFFSET:	45.23	LT
141 STA.	64+36.28	OFFSET:	45.23	LT
142 STA.	64+76.47	OFFSET:	40.22	LT
143 STA.	64+58.47	OFFSET:	40.23	LT
144 STA.	64+58.47	OFFSET:	45.23	LT
145 STA.	64+76.47	OFFSET:	45.22	LT



NOTE: EASEMENTS TO BE ACQUIRED BY THE CITY OF SPRINGFIELD.



REVISIONS	
NAME	DATE

ILLINOIS DEPARTMENT OF TRANSPORTATION  
 EXISTING RIGHT-OF-WAY  
 FAU RTE 7982 CAPITOL AVE  
 SEC NO. 05-00447-01-PV  
 SANGAMON COUNTY, ILLINOIS  
 SCALE: VERT. \_\_\_\_\_  
 HORIZ. \_\_\_\_\_  
 DATE 09/19/07  
 DRAWN BY: LLP  
 CHECKED BY: MH



LAYOUT: LLP 02/23/07  
 DRAWN: LLP 02/23/07  
 REVIEWED: MH 02/19/07  
 PLOT DATE = 01/10/2008 10:21 AM  
 FILE NAME = H:\22jobs\02-20-08\1a\cadd\road\microstation\sheet\section.L7h-11th-C-104-.R0W.dgn  
 PLOT SCALE = 100.0000' / 1 IN.  
 USER NAME = P050556