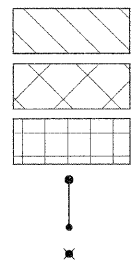


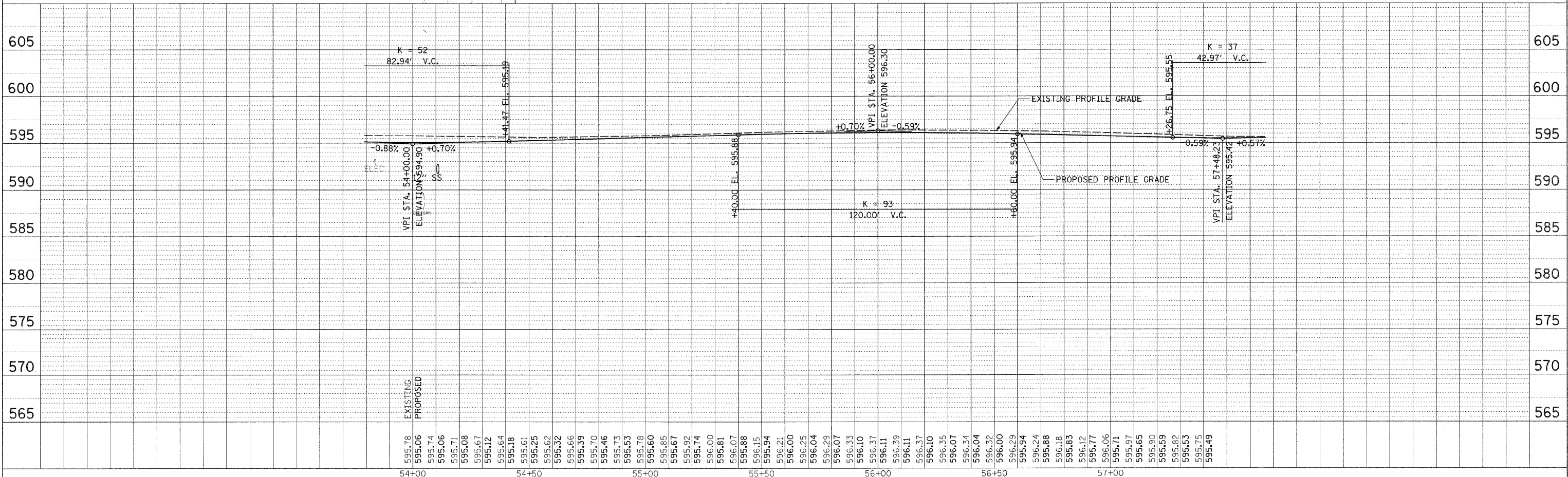
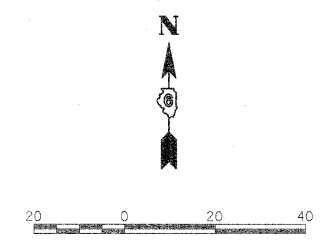
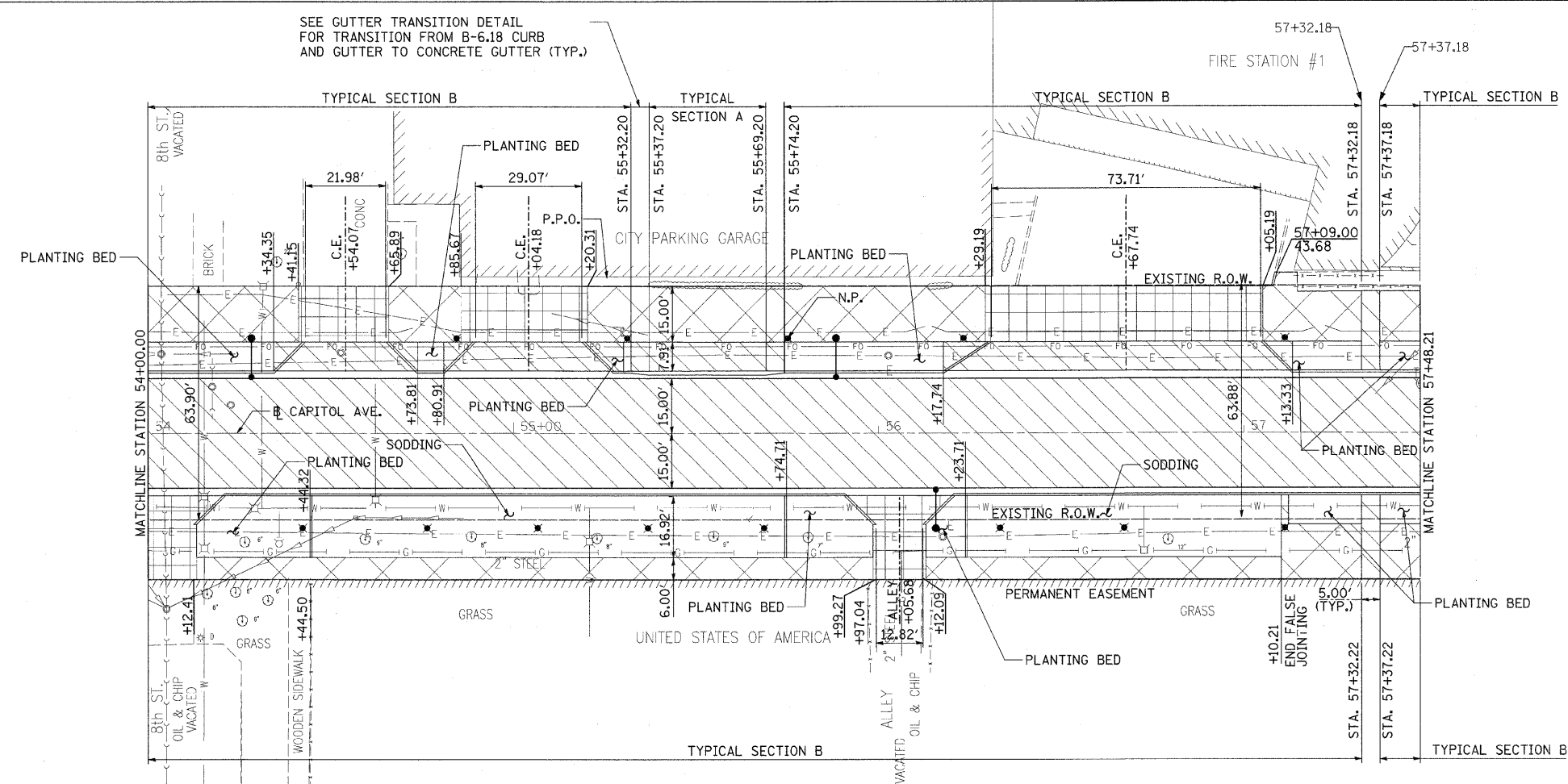
F.A.U. RTE.	SECTION	COUNTY	TOTAL SHEETS	SHEET NO.
7982	*	SANGAMON	114	40
STA.	TO STA.			
FED. ROAD DIST. NO.		ILLINOIS	FED. AID PROJECT	
* 05-00447-01-PV		CITY OF SPRINGFIELD		

LEGEND

- PROPOSED CONCRETE PAVERS  
SEE STREETScape PLANS
- PROPOSED PCC SIDEWALK
- PROPOSED PCC DRIVEWAY PAVEMENT
- PROPOSED STREET LIGHT
- PROPOSED PEDESTRIAN LIGHT



SEE GUTTER TRANSITION DETAIL FOR TRANSITION FROM B-6.18 CURB AND GUTTER TO CONCRETE GUTTER (TYP.)



PLAN	SURVEYED	BY	DATE
NOTE BOOK	ALIGNED		
	CHECKED		
	NO. OF PAGES		
	FILE NAME		



PROFILE	SURVEYED	BY	DATE
GRADES	CHECKED		
	NO. OF PAGES		
	FILE NAME		
	USER NAME		

LAYOUT ZZZ 00/00/00  
 DRAWN D.L.C. 03/15/07  
 REVIEWED M.R. 09/15/07  
 PLOT DATE = 01/18/2008 10:22 AM  
 FILE NAME = H:\2008\92-2071a\cadd\road\microstation\sheet\action-1.dwg  
 PLOT SCALE = 20/8000 / IN.  
 USER NAME = Pop08036