

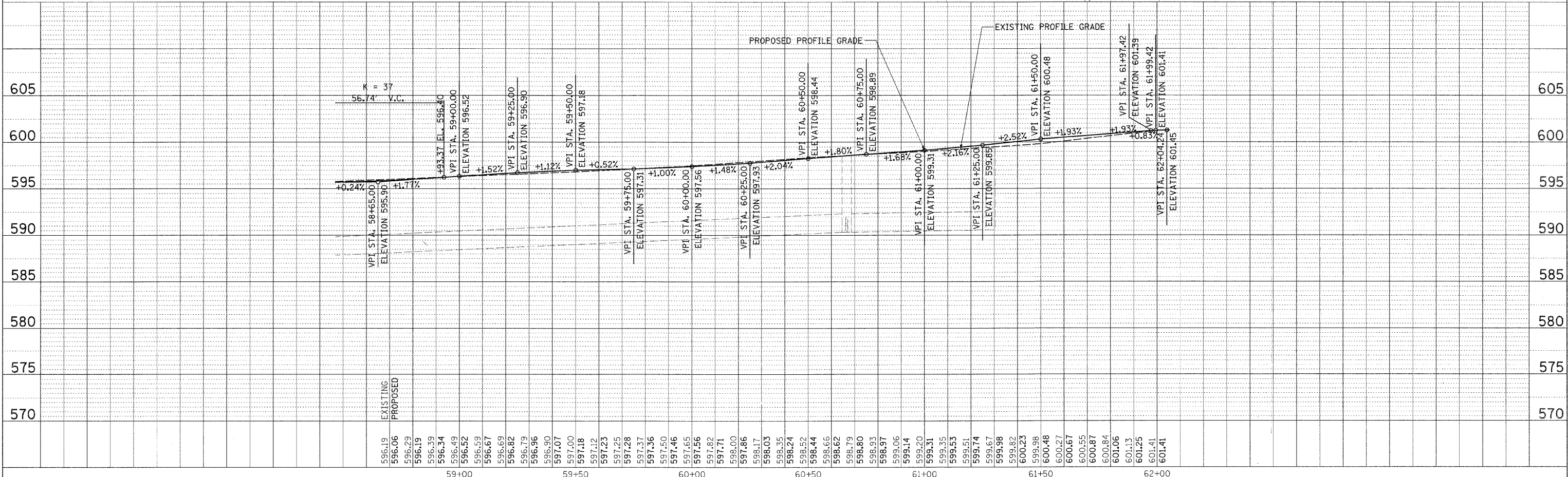
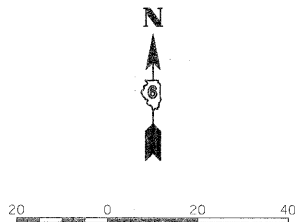
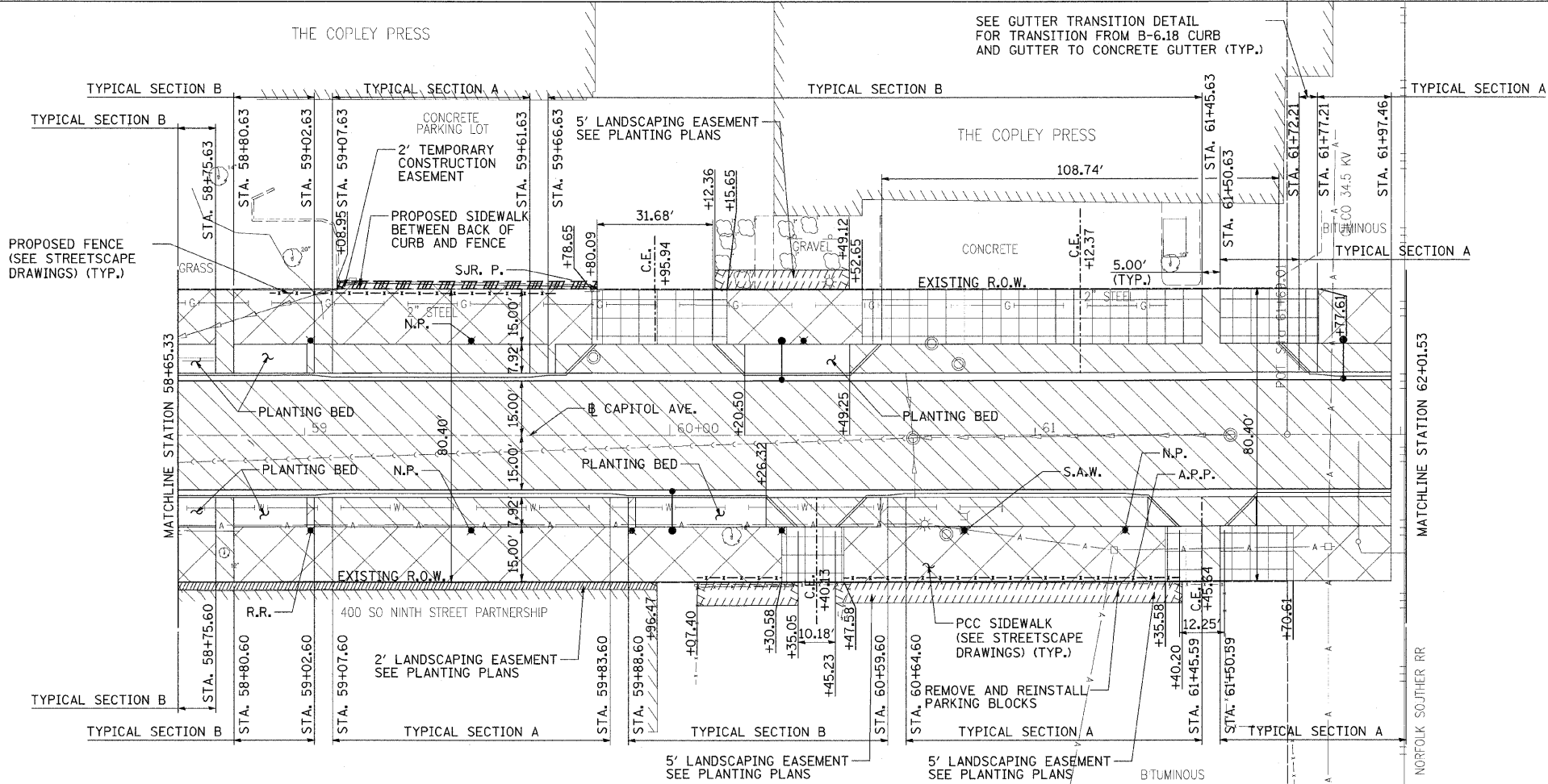
F.A.U. RT#	SECTION	COUNTY	TOTAL SHEETS	SHEET NO.
7982	*	SANGAMON	114	42
STA.		TO STA.		
FED. ROAD DIST. NO.		ILLINOIS FED. AID PROJECT		
* 05-00447-01-PV		CITY OF SPRINGFIELD		

LEGEND

- PROPOSED CONCRETE PAVERS
SEE STREETScape PLANS
- PROPOSED PCC SIDEWALK
- PROPOSED PCC DRIVEWAY PAVEMENT
- PROPOSED STREET LIGHT
- PROPOSED PEDESTRIAN LIGHT

PROPOSED SIGNAGE LEGEND

- N.P. = NO PARKING
- R.R. = RAILROAD CROSSING
- S.A.W. = SCHOOL ADVANCED WARNING
- A.P.P. = ASSIGNED PARKING ONLY
- S.J.R.P. = STATE JOURNAL-REGISTER PARKING ONLY



LAYOUT: ZZZ 00/00/00
 DRAWN: DFC 03/15/01
 REVIEWED: WH 09/19/01
 PLOT DATE: 01/10/2008 10:22 AM
 FILE NAME: I:\82\pba\22\2011a\cadd\road\microstation\sheet\section_1.dwg
 PLOT SCALE: 1/8" = 20'-00" / 1" = 240'-00"
 USER NAME: Pops00536
 SURVEYED: []
 PLAN: []
 PROFILE: []
 CHECKED: []
 DATE: []



Copyright Hanson Professional Services Inc. 2008