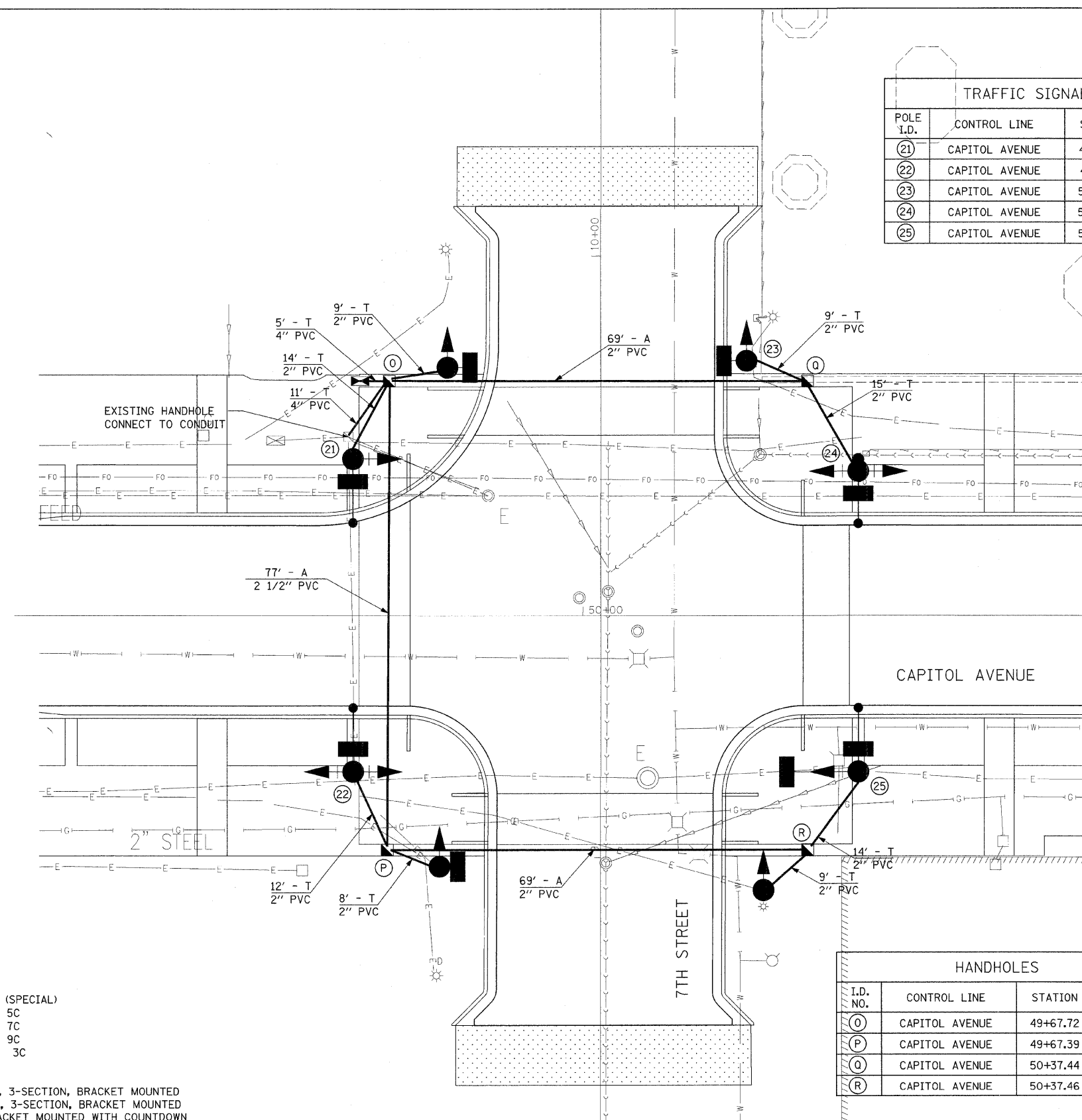


F.A.U. RTE.	SECTION	COUNTY	TOTAL SHEETS	SHEET NO.
7982	*	SANGAMON	114	51
STA.	TO STA.			
FED. ROAD DIST. NO.	ILLINOIS	FED. AID PROJECT		
* 05-00447-01-PV CITY OF SPRINGFIELD				

TRAFFIC SIGNAL POST			
POLE I.D.	CONTROL LINE	STATION	OFFSET
(21)	CAPITOL AVENUE	49+61.69	26.1' LT.
(22)	CAPITOL AVENUE	49+61.71	26.0' RT.
(23)	CAPITOL AVENUE	50+27.29	42.4' LT.
(24)	CAPITOL AVENUE	50+45.90	24.0' LT.
(25)	CAPITOL AVENUE	50+45.93	26.0' RT.



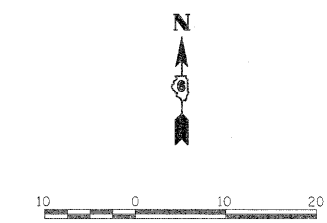
NOTE: CONTACT CWLP TO LOCATE SIGNAL DISCONNECT AND POWER FEED.

HANDHOLES			
I.D. NO.	CONTROL LINE	STATION	OFFSET
(O)	CAPITOL AVENUE	49+67.72	39.0' LT.
(P)	CAPITOL AVENUE	49+67.39	38.9' RT.
(Q)	CAPITOL AVENUE	50+37.44	39.0' LT.
(R)	CAPITOL AVENUE	50+37.46	38.9' RT.

TRAFFIC SIGNAL QUANTITIES

LOCATION: 7TH ST. & CAPITOL AVE.

QUANTITY:	UNIT:	ITEM:
90	FOOT	CONDUIT IN TRENCH, 2" DIA., PVC
16	FOOT	CONDUIT IN TRENCH, 4" DIA., PVC
138	FOOT	CONDUIT, AUGERED, 2" DIA., PVC
77	FOOT	CONDUIT, AUGERED, 2 1/2" DIA., PVC
4	EACH	HANDHOLE, COMPOSITE CONCRETE
113	FOOT	TRENCH AND BACKFILL FOR ELECTRICAL WORK (SPECIAL)
199	FOOT	ELECTRIC CABLE IN CONDUIT, SIGNAL NO. 14 5C
321	FOOT	ELECTRIC CABLE IN CONDUIT, SIGNAL NO. 14 7C
451	FOOT	ELECTRIC CABLE IN CONDUIT, SIGNAL NO. 14 9C
18	FOOT	ELECTRIC CABLE IN CONDUIT, SERVICE, NO. 6 3C
24	FOOT	CONCRETE FOUNDATION, TYPE A
3.5	FOOT	CONCRETE FOUNDATION, TYPE D
6	EACH	SIGNAL HEAD, POLYCARBONATE, L.E.D., 1-FACE, 3-SECTION, BRACKET MOUNTED
2	EACH	SIGNAL HEAD, POLYCARBONATE, L.E.D., 2-FACE, 3-SECTION, BRACKET MOUNTED
8	EACH	PEDESTRIAN SIGNAL HEAD, L.E.D., 1-FACE, BRACKET MOUNTED WITH COUNTDOWN
6	EACH	TRAFFIC SIGNAL BACKPLATE
9	EACH	REMOVE EXISTING SIGNAL HEAD
8	EACH	REMOVE EXISTING PEDESTRIAN SIGNAL HEAD
7	EACH	REMOVE EXISTING TRAFFIC SIGNAL POST
1	EACH	RELOCATE EXISTING TRAFFIC CONTROLLER AND CABINET
4	EACH	ORNAMENTAL LIGHTING UNIT, COMPLETE
8	EACH	REMOVE EXISTING CONCRETE FOUNDATION
1	EACH	RELOCATE EXISTING EMERGENCY VEHICLE GPS SYSTEM
4	EACH	TRAFFIC SIGNAL POST, 15 FT.
970	FOOT	ELECTRIC CABLE IN CONDUIT, GROUND, NO 6 1C (GREEN)
1	EACH	DRILL EXISTING HANDHOLE



REVISIONS	
NAME	DATE

ILLINOIS DEPARTMENT OF TRANSPORTATION
 7TH STREET SIGNAL PLAN

FAU RTE 7982 CAPITOL AVE
 SEC NO. 05-00447-01-PV
 SANGAMON COUNTY, ILLINOIS

SCALE: VERT. _____
 HORIZ. _____
 DATE 09/19/07

DRAWN BY _____
 CHECKED BY _____



LAYOUT: ZZZ 00/00/00
 DRAWN: DLC 03/25/07
 REVIEWED: KRB 11/23/07

PLOT DATE = 01/18/2008 10:23 AM
 FILE NAME = I:\02_obs\02-204\1a\cadd\road\microstation\sheet\section.L7-11th\Peoria\0-18955.dgn
 PLOT SCALE = 10.0000 / IN.
 USER NAME = Pop06035