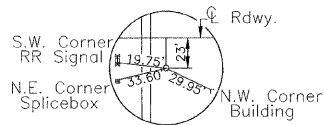


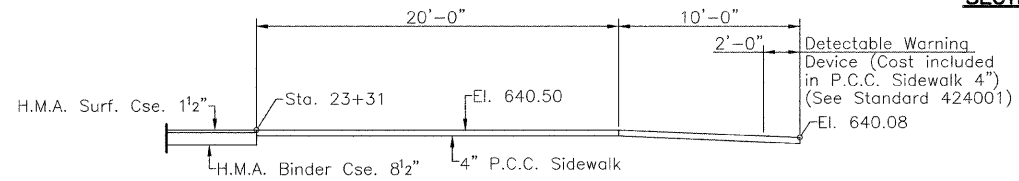
SECTION 33. T. 12 N., R. 5 W., 3rd P.M.

RTE.	SECTION	COUNTY	TOTAL SHEETS	SHEET NO.
C.H. 17	*	MONTGOMERY	41	14

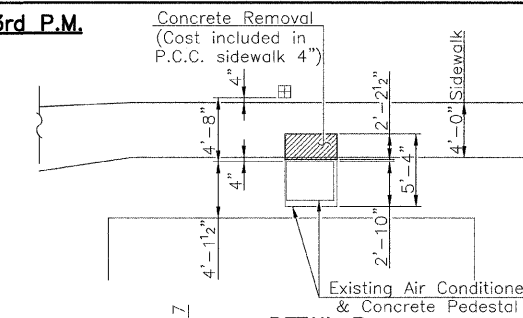
PROJECT * 07-00125-01-RS



TIE #10
Sta. 22+40
(#5 Rebar)

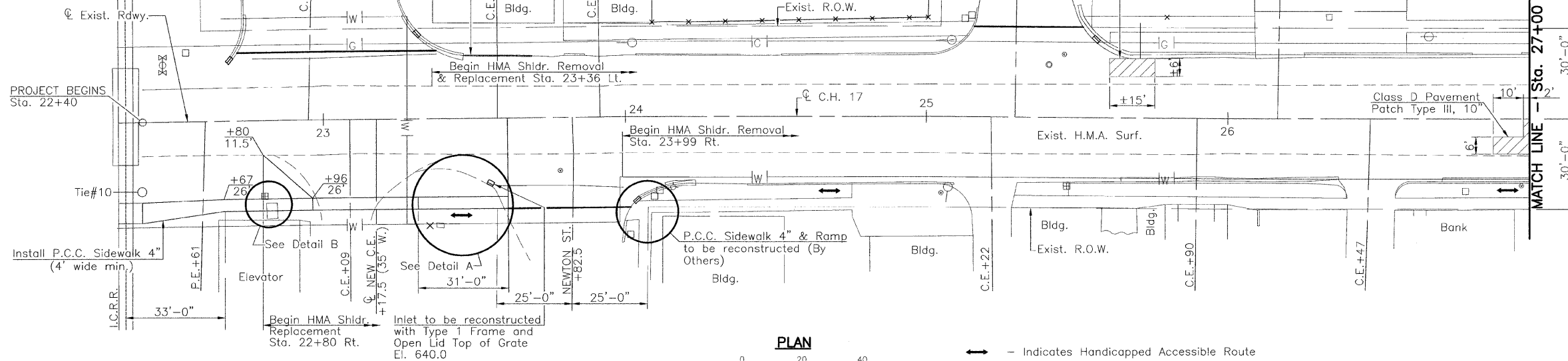


DETAIL A

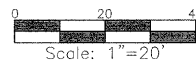


DETAIL B

Exist. R.R. Tracks
Sta. 342+28 (Original Stationing)
= Sta. 22+34.35 (Prop. Stationing)



PLAN

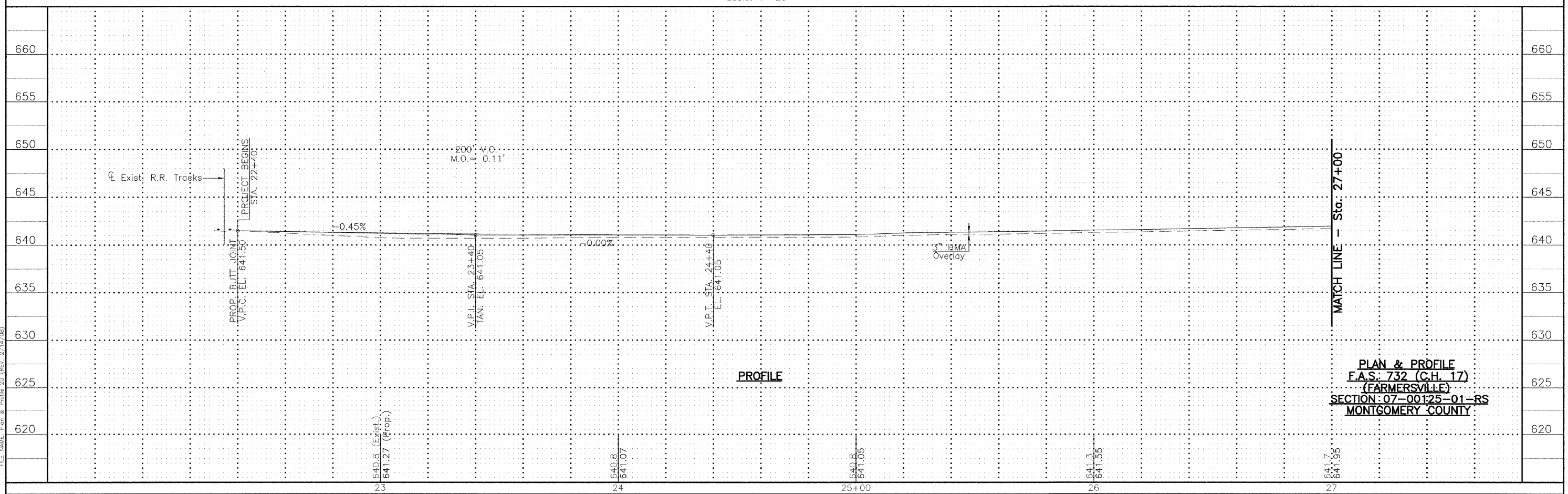


- - Indicates Handicapped Accessible Route
- ▨ - Indicates Class D Patch

UTILITIES

- Consolidated Communications
1-800-553-7611
- Ameren CIPS
1-888-789-2477
- Charter Communications
1-217-287-7992
- Atmos
1-888-824-3434
- Village of Farmersville
1-217-227-4169

FILE NAME: Plan & Profile 20 (REV. 2/14/06)



PROFILE

PLAN & PROFILE
F.A.S.: 732 (C.H. 17)
(FARMERSVILLE)
SECTION 07-00125-01-RS
MONTGOMERY COUNTY