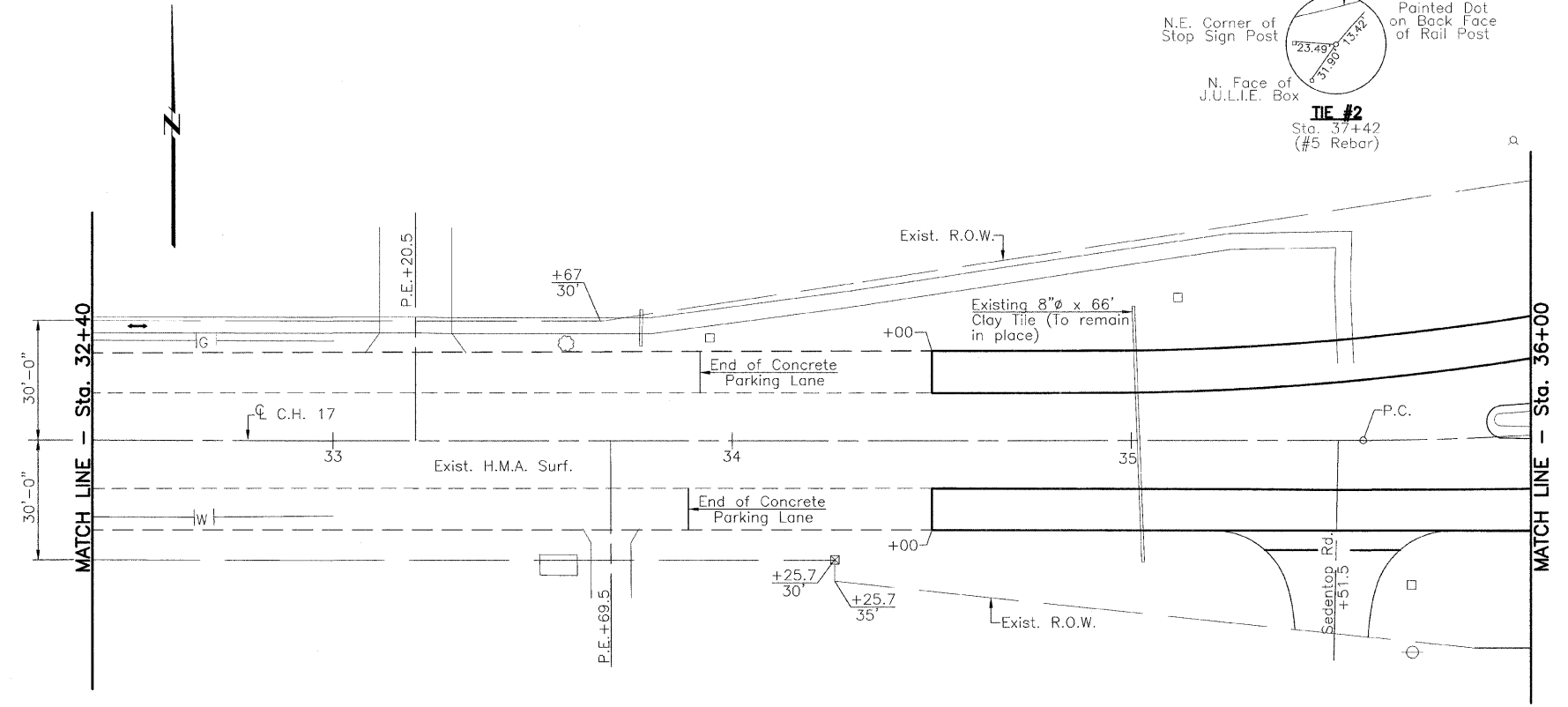
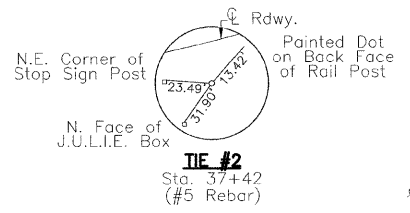


SECTIONS 33, T. 12 N., R. 5 W., 3rd P.M.

RTE.	SECTION	COUNTY	TOTAL SHEETS	SHEET NO.
C.H. 17	*	MONTGOMERY	41	16

PROJECT * 07-00125-01-RS

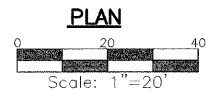


CURVE #100 DATA

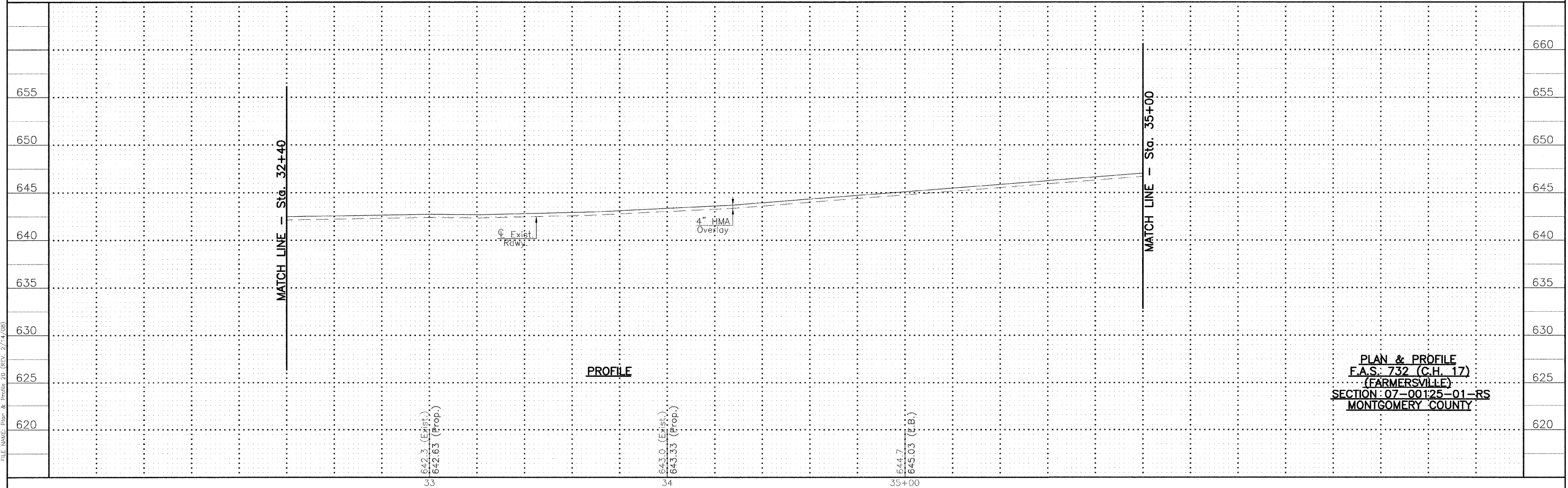
P.I. Sta. 37+25.29
 $\Delta = 26'17'17''$
 $D = 8'00'00''$
 $T = 167.25'$
 $R = 716.20'$
 $L = 328.60'$
 $E = 19.27'$
 P.C. Sta. 35+58.04
 P.T. Sta. 38+86.64
 $S.E. = 0.035'/'$
 Superelevation Attained:
 Sta. 34+91.04 to Sta. 35+91.04
 Sta. 38+53.64 to Sta. 39+53.64

UTILITIES

- Consolidated Communications
1-800-553-7611
- Ameren CIPS
1-888-789-2477
- Charter Communications
1-217-287-7992
- Atmos
1-888-824-3434
- Village of Farmersville
1-217-227-4169



→ - Indicates Handicapped Accessible Route



PROFILE

PLAN & PROFILE
F.A.S. 732 (C.H. 17)
(FARMERSVILLE)
SECTION 07-00125-01-RS
MONTGOMERY COUNTY

FILE NAME: Plan & Profile 2D (REV. 2/14/08)