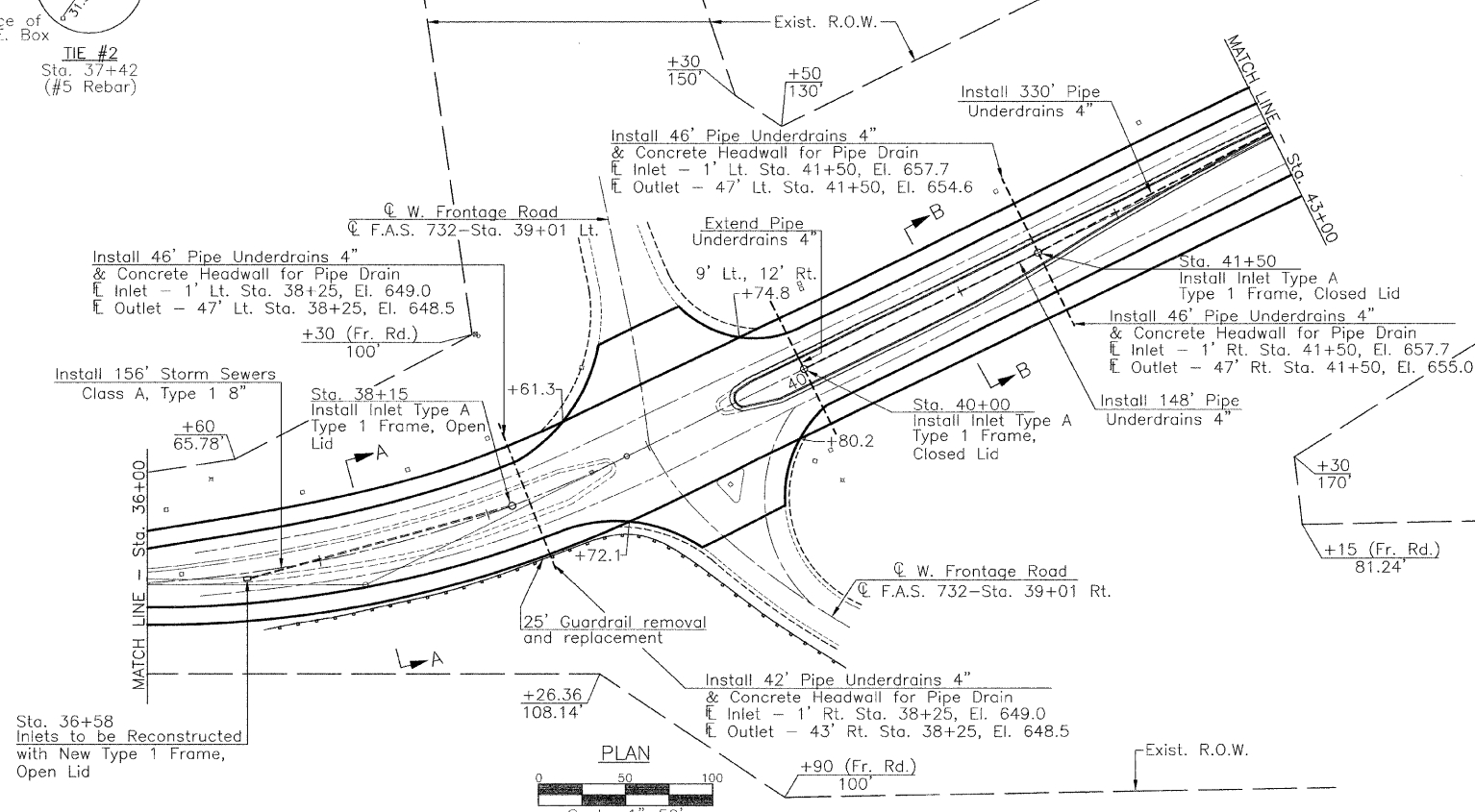
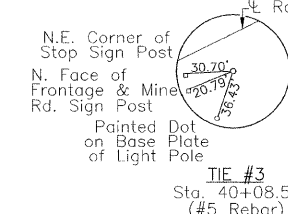
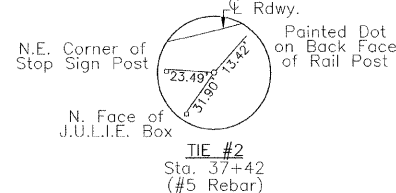
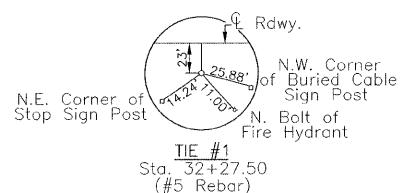


RTE.	SECTION	COUNTY	TOTAL SHEETS	SHEET NO.
C.H. 17	*	MONTGOMERY	41	17

PROJECT \* 07-00125-01-RS

SECTION 33, T. 12 N., R. 5 W., 3rd P.M.



**CURVE #100 DATA**

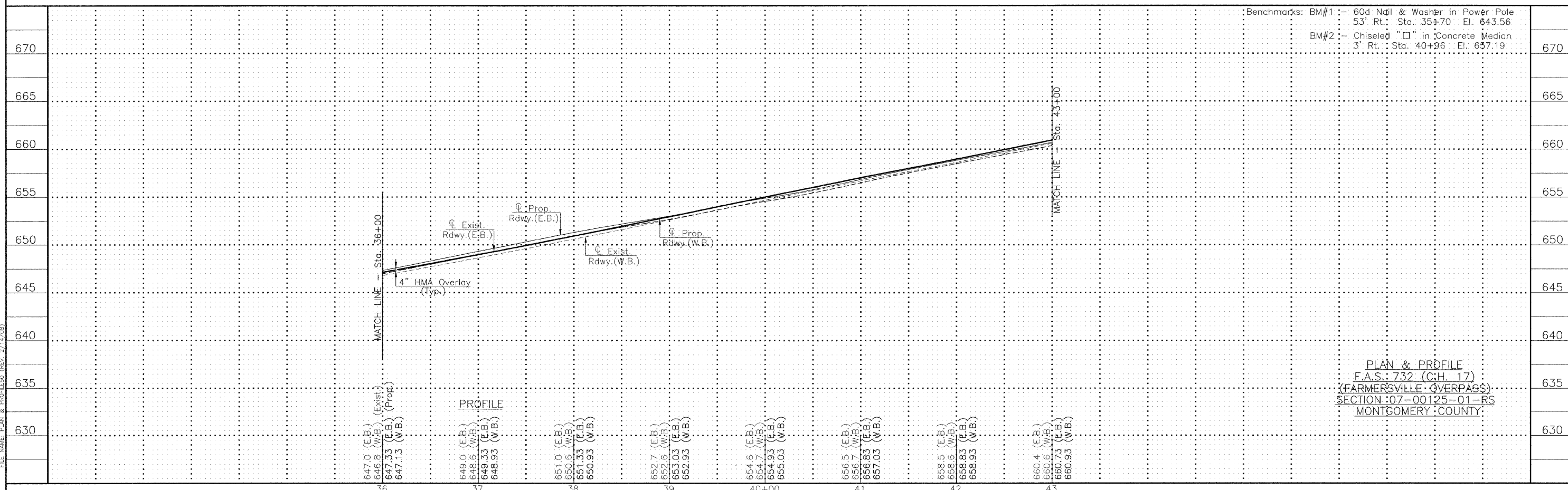
P.I. Sta.	37+25.29
$\Delta$	26°17'17"
D	8°00'00"
T	167.25'
R	716.20'
L	328.60'
E	19.27'
P.C. Sta.	35+58.04
P.T. Sta.	38+86.64
S.E.	0.035'/'

Superelevation Attained:  
Sta. 34+91.04 to Sta. 35+91.04  
Sta. 38+53.64 to Sta. 39+53.64

- UTILITIES**
- Consolidated Communications  
1-800-553-7611
  - Ameren CIPS  
1-888-789-2477
  - Charter Communications  
1-217-287-7992
  - Atmos  
1-888-824-3434
  - Village of Farmersville  
1-217-227-4169



FILE NAME: PLAN & PROFILE (REV. 2/14/08)



Benchmarks: BM#1 - 60d Nail & Washer in Power Pole  
53' Rt. Sta. 35+70 El. 643.56  
BM#2 - Chiseled "□" in Concrete Median  
3' Rt. Sta. 40+96 El. 657.19

**PLAN & PROFILE**  
F.A.S.: 732 (C.H. 17)  
(FARMERSVILLE OVERPASS)  
SECTION: 07-00125-01-RS  
MONTGOMERY COUNTY