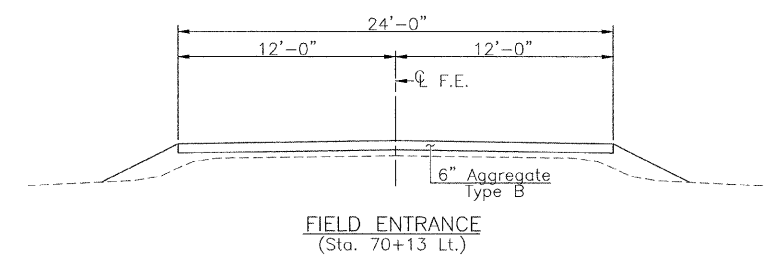
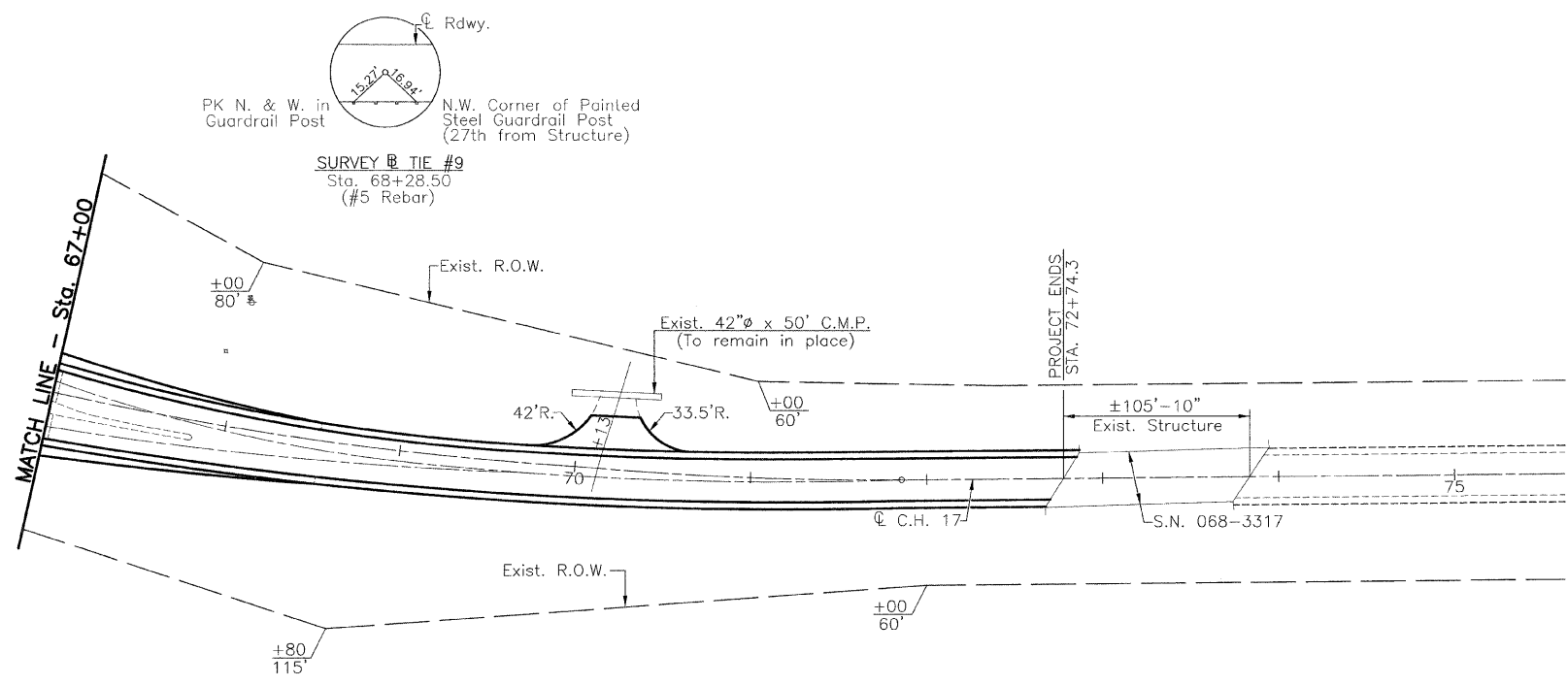


SECTIONS 33 & 34, T. 12 N., R. 5 W., 3rd P.M.

RTE.	SECTION	COUNTY	TOTAL SHEETS	SHEET NO.
C.H. 17	*	MONTGOMERY	41	20

PROJECT \* 07-00125-01-RS

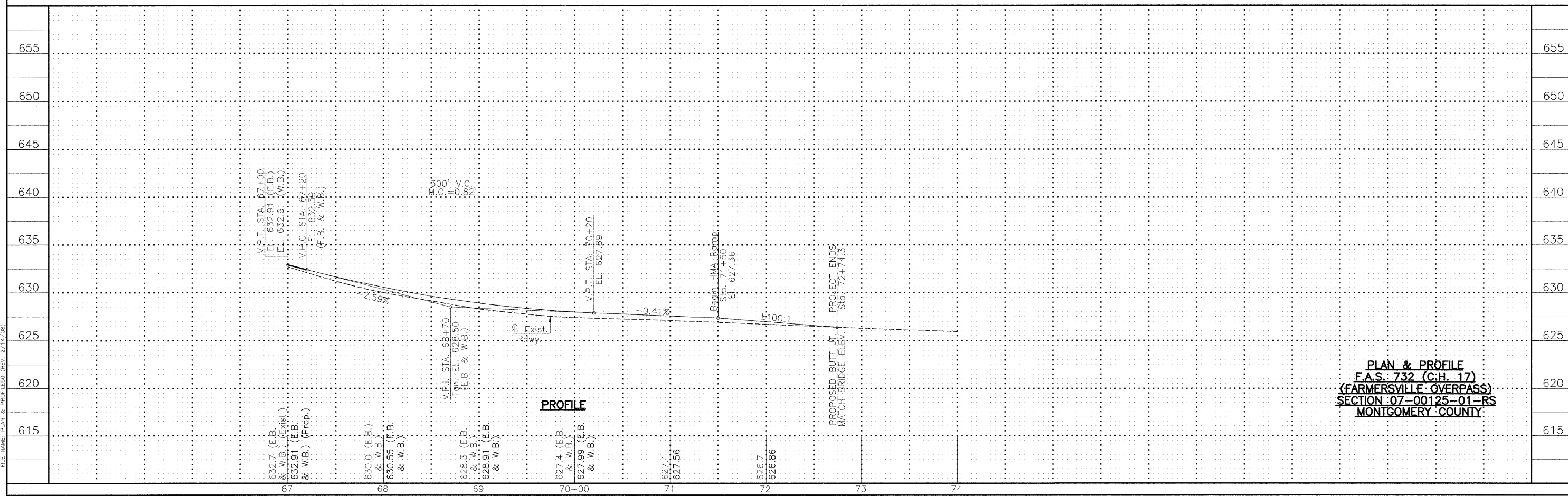


FIELD ENTRANCE  
(Sta. 70+13 Lt.)

- UTILITIES**
- Consolidated Communications  
1-800-553-7611
  - Ameren CIPS  
1-888-789-2477
  - Charter Communications  
1-217-287-7992
  - Atmos  
1-888-824-3434
  - Village of Farmersville  
1-217-227-4169

**PLAN**  
Scale: 1"=50'

FILE NAME: PLAN & PROFILE.DWG (REV. 2/14/08)



**PROFILE**

**PLAN & PROFILE  
F.A.S. 732 (C.H. 17)  
(FARMERSVILLE OVERPASS)  
SECTION 07-00125-01-RS  
MONTGOMERY COUNTY**