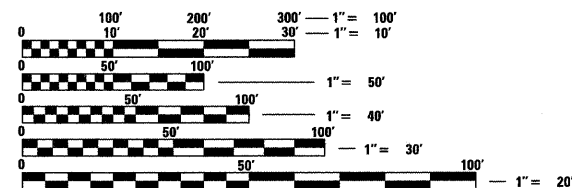
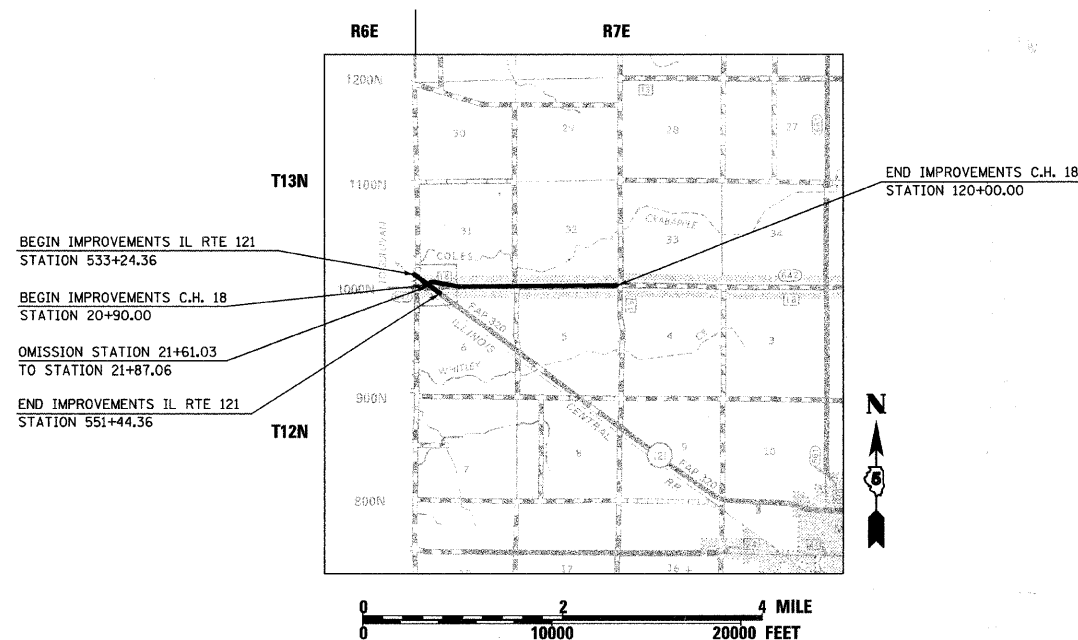
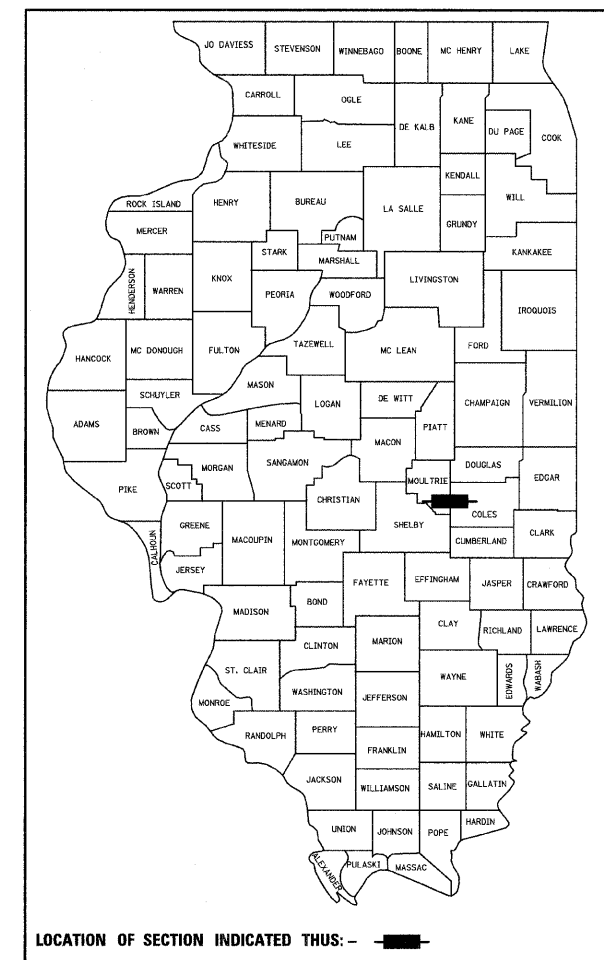


STATE OF ILLINOIS
DEPARTMENT OF TRANSPORTATION
DIVISION OF HIGHWAYS

**PLANS FOR PROPOSED
FEDERAL AID HIGHWAY**

F.A.S. ROUTE 642 (CH 18)
SECTION 00-00127-00-WR
PROJECT HPP-SR-0642 (121)
C.H. 18 RECONSTRUCTION
COLES COUNTY
JOB# C-97-046-06

FOR INDEX OF SHEETS, SEE SHEET 2
FOR LIST OF STANDARDS, SEE SHEET 2



TOTAL LENGTH OF FAS 642 IMPROVEMENT	=	9,910.00 LIN. FT.	=	1.877 MILES
OMISSION OF FAS 642 IMPROVEMENT	=	26.03 LIN. FT.	=	0.005 MILES
NET LENGTH OF FAS 642 IMPROVEMENT	=	9,883.97 LIN. FT.	=	1.872 MILES
TOTAL LENGTH OF FAP 320 IMPROVEMENT	=	1,820.00 LIN. FT.	=	0.345 MILES
NET LENGTH OF FAP 320 IMPROVEMENT	=	1,820.00 LIN. FT.	=	0.345 MILES
TOTAL LENGTH OF IMPROVEMENT	=	11,703.97 LIN. FT.	=	2.217 MILES



FULL SIZE PLANS HAVE BEEN PREPARED USING STANDARD ENGINEERING SCALES. REDUCED SIZED PLANS WILL NOT CONFORM TO STANDARD SCALES. IN MAKING MEASUREMENTS ON REDUCED PLANS, THE ABOVE SCALES MAY BE USED.

TRAFFIC DATA:
FUNCTIONAL CLASS: MAJOR COLLECTOR
ADT: 2150 (2027)
DESIGN SPEED = 60 MPH

The Upchurch Group, Inc.
engineers architects surveyors
123 N. 15TH ST. MATTOON, ILLINOIS 61938 (217) 235-3177
PROFESSIONAL DESIGN FIRM LICENSE NO. 184-003401
TUG PROJ. #3103027

J.U.L.I.E.
JOINT UTILITY LOCATION INFORMATION FOR EXCAVATION
1-800-892-0123

APPROVED 02/28 20 08
Paul A. Johnson
COUNTY ENGINEER

PASSED 3/4 20 08
Maureen K. Koel
DISTRICT SEVEN ENGINEER OF
LOCAL ROADS & STREETS

Released For
Bid Based on
Limited Review

3/4 20 08
Christine Redden
DEPUTY DIRECTOR OF HIGHWAYS,
REGION FOUR ENGINEER

STATE OF ILLINOIS
DEPARTMENT OF TRANSPORTATION