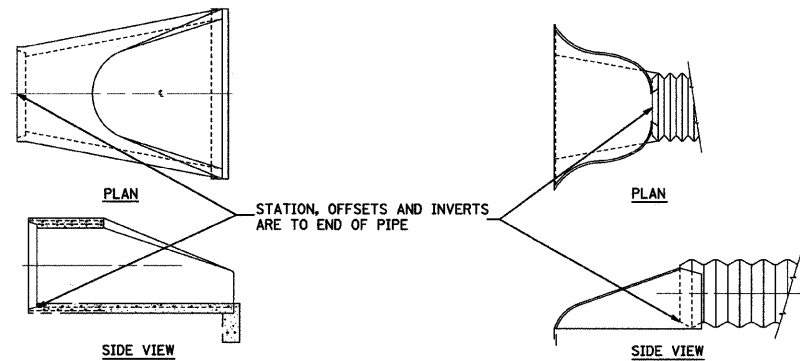


| F.A.S. RTE.         | SECTION        | COUNTY   | TOTAL SHEETS     | SHEET NO. |
|---------------------|----------------|----------|------------------|-----------|
| 642                 | 00-00127-00-WR | COLES    | 91               | 15        |
| STA.                |                | TO STA.  |                  |           |
| FED. ROAD DIST. NO. |                | ILLINOIS | FED. AID PROJECT |           |

PIPE CULVERTS, STATION 20+90 TO STATION 46+35

| SIDE   | STA.   | REMARKS                    | RCCP, TYPE 1 |        |        |        | CS/A CP TYPE 1 | PRECAST CONCRETE BOX CULVERT | METAL END SECTIONS | PRC FLARED END SECTIONS |      |      |      | PRECAST BOX CULVERT END SECTION | CONTROLLED LOW STRENGTH MATERIAL |
|--------|--------|----------------------------|--------------|--------|--------|--------|----------------|------------------------------|--------------------|-------------------------|------|------|------|---------------------------------|----------------------------------|
|        |        |                            | 18"          | 24"    | 36"    | 48"    |                |                              |                    | 18"                     | 24"  | 36"  | 48"  |                                 |                                  |
|        |        |                            | LIN FT       | LIN FT | LIN FT | LIN FT | LIN FT         | LIN FT                       | EACH               | EACH                    | EACH | EACH | EACH | EACH                            | CU YD                            |
| C. H.  | 18     |                            |              |        |        |        |                |                              |                    |                         |      |      |      |                                 |                                  |
|        | 21+31  | EXTEND ACROSS ROAD CULVERT | 8            |        |        |        |                |                              | 2                  |                         |      |      |      |                                 |                                  |
|        | 31+00  | ACROSS ROAD                |              | 48     |        |        |                |                              |                    | 2                       |      |      |      |                                 |                                  |
| RT     | 34+50  | FRONTAGE ROAD              |              | 32     |        |        |                |                              |                    | 2                       |      |      |      |                                 |                                  |
|        | 23+35  | ACROSS ROAD                |              |        | 88     |        |                |                              |                    |                         | 2    |      |      |                                 |                                  |
|        | 22+13  | ACROSS ROAD                |              |        |        | 104    |                |                              |                    |                         |      | 2    |      | 36.8                            |                                  |
| RT     | 40+24  | ENTRANCE                   |              |        |        | 30     |                | 2                            |                    |                         |      |      |      |                                 |                                  |
| IL RTE | 121    |                            |              |        |        |        |                |                              |                    |                         |      |      |      |                                 |                                  |
| RT     | 536+70 | COUNTY ROAD 000 E.         |              |        |        |        | 61             |                              |                    |                         |      |      | 2    | 13.1                            |                                  |
|        | 541+00 | ACROSS ROAD                |              |        | 72     |        |                |                              |                    |                         | 2    |      |      | 9.5                             |                                  |
| TOTALS |        |                            | 8            | 80     | 160    | 104    | 30             | 61                           | 2                  | 2                       | 4    | 4    | 2    | 2                               | 59.4                             |



EXISTING SIGNS

| ROUTE    | STATION | OFFSET   | COMMENT              |
|----------|---------|----------|----------------------|
| C. H. 18 | 70+49.5 | 28.0' LT | COUNTY COORD., RESET |
| C. H. 18 | 114+03  | 22.5' RT | STOP AHEAD, REMOVE   |
| C. H. 18 | 117+58  | 20.0' LT | C. H. 18, RESET      |

PROPOSED SIGNS

| ROUTE                    | STATION | OFFSET   | SIGN PANEL TYPE 1 SQ FT | *SIGN PANEL TYPE 1 SPECIAL SQ FT | TELESCOPING STEEL SIGN SUPPORT FEET | COMMENT                              |
|--------------------------|---------|----------|-------------------------|----------------------------------|-------------------------------------|--------------------------------------|
|                          |         |          |                         |                                  |                                     |                                      |
| C. H. 18                 | 23+19   | 26.0' LT | 6.3                     |                                  | 15                                  | STOP SIGN (R1-1)                     |
| C. H. 18                 | 23+19   | 26.0' LT | 3.8                     |                                  | -                                   | CROSS TRAFFIC DOES NOT STOP (W4-4P)  |
| C. H. 18                 | 24+55   | 21.0' RT | 6.3                     |                                  | 16                                  | RIGHT CURVE (W1-2R)                  |
| C. H. 18                 | 24+55   | 21.0' RT | 2.3                     |                                  | -                                   | ADVISORY SPEED PLATE 45 MPH (W-13-1) |
| C. H. 18                 | 26+19   | 33.0' LT | 9.0                     |                                  | 16                                  | STOP AHEAD (W3-1)                    |
| C. H. 18                 | 32+00   | 21.0' RT | 6.3                     |                                  | 16                                  | SIDEROAD (W2-2)                      |
| C. H. 18                 | 33+00   | 21.0' LT | 6.3                     |                                  | 16                                  | LEFT CURVE (W1-2L)                   |
| C. H. 18                 | 33+00   | 21.0' LT | 2.3                     |                                  | -                                   | ADVISORY SPEED PLATE 45 MPH (W-13-1) |
| C. H. 18                 | 36+00   | 21.0' RT | 6.3                     |                                  | 17                                  | LEFT CURVE (W1-2L)                   |
| C. H. 18                 | 36+00   | 21.0' RT | 2.3                     |                                  | -                                   | ADVISORY SPEED PLATE 45 MPH (W-13-1) |
| C. H. 18                 | 37+00   | 21.0' LT | 6.3                     |                                  | 16                                  | SIDEROAD (W2-2)                      |
| C. H. 18                 | 44+45   | 21.0' LT | 6.3                     |                                  | 17                                  | RIGHT CURVE (W1-2R)                  |
| C. H. 18                 | 44+45   | 21.0' LT | 2.3                     |                                  | -                                   | ADVISORY SPEED PLATE 45 MPH (W-13-1) |
| C. H. 18                 | 64+85   | 24.0' RT |                         | 6.3                              | 17                                  | SIDEROAD SPECIAL                     |
| C. H. 18 (END OF T.R. 14 | 69+33   | 24.0' RT | 8.0                     |                                  | 30                                  | DOUBLE ARROW (W1-7) (2 POSTS)        |
| C. H. 18 (END OF T.R. 14 | 70+75   | 24.0' LT | 8.0                     |                                  | 28                                  | DOUBLE ARROW (W1-7) (2 POSTS)        |
| C. H. 18                 | 74+95   | 24.0' LT |                         | 6.3                              | 17                                  | SIDEROAD SPECIAL                     |
| C. H. 18                 | 114+25  | 24.0' RT | 6.3                     |                                  | 16                                  | CROSS ROAD (W2-1)                    |
| T. R. 14                 | 42+24   | 20.0' LT | 6.3                     |                                  | 14                                  | STOP SIGN (R1-1)                     |
| T. R. 14A                | 50+73   | 20.0' RT | 6.3                     |                                  | 14                                  | STOP SIGN (R1-1)                     |
| FRONTAGE                 | 10+25   | 20.0' RT | 6.3                     |                                  | 14                                  | STOP SIGN (R1-1)                     |
| FRONTAGE                 | 10+60   | 15.0' RT | 6.3                     |                                  | 15                                  | NO OUTLET (W14-2)                    |
| TOTALS                   |         |          | 113.6                   | 12.6                             | 294.0                               |                                      |

\*SIGN PANEL TYPE 1 (SPECIAL) ARE TO BE SIGN TYPE W2-1 WITH THE SYMBOL FOR THE INTERSECTION TO INDICATE AN OFFSET WITH THE LEFT ROAD SHIFTED DOWN AND THE RIGHT ROAD SHIFTED UP.

| REVISIONS |      | ILLINOIS DEPARTMENT OF TRANSPORTATION |
|-----------|------|---------------------------------------|
| NAME      | DATE |                                       |
|           |      | SCHEDULES                             |
|           |      |                                       |
|           |      |                                       |
|           |      |                                       |
|           |      |                                       |
|           |      |                                       |
|           |      |                                       |
|           |      |                                       |
|           |      |                                       |
|           |      |                                       |

SCALE: VERT. DATE 02/28/2008 DRAWN BY RLH CHECKED BY MED

TUG PROJ. #13191022-5 ...WHITETOPPING\_SCHEDULES.GPJ