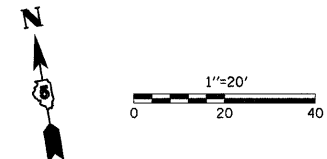
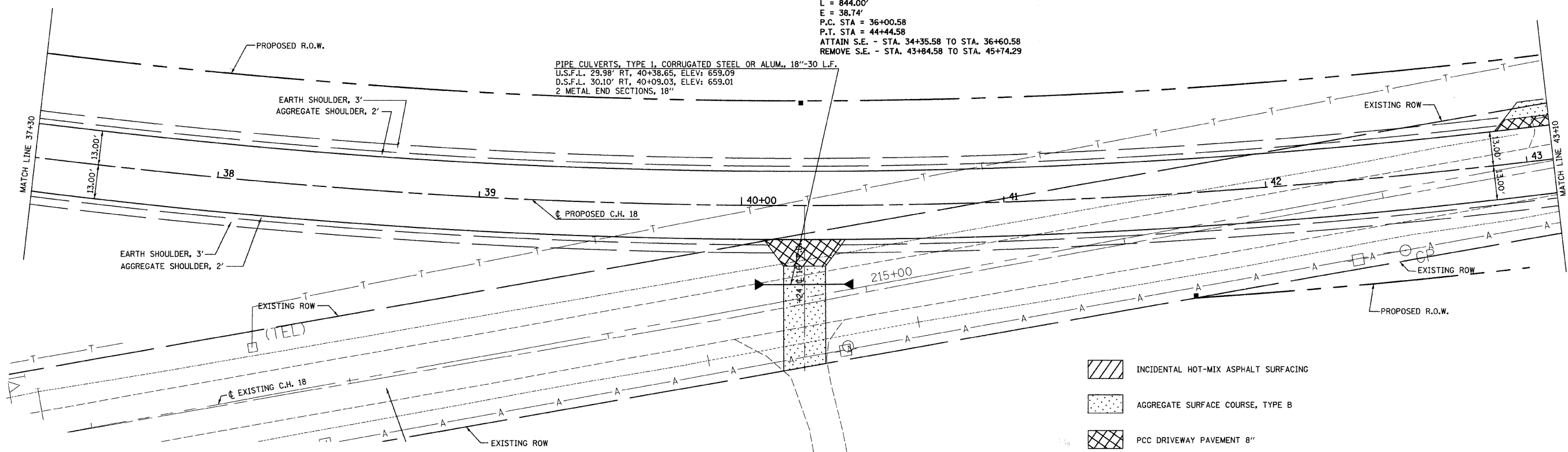


| F.A.S. RTE. | SECTION | COUNTY | TOTAL SHEETS | SHEET NO. |
|-----------------------------|----------------|----------|------------------|-----------|
| 642 | 00-00127-00-WR | COLES | 91 | 24 |
| STA. 37+30.00 TO STA. 43+10 | | | | |
| FED. ROAD DIST. NO. | | ILLINOIS | FED. AID PROJECT | |



PROP. CURVE CH18-3
 PI STA. = 40+27.26
 $\Delta = 20^\circ 45' 16''$ (LT)
 $D = 2^\circ 27' 33''$
 $R = 2,330.00'$
 $T = 426.68'$
 $L = 844.00'$
 $E = 38.74'$
 P.C. STA = 36+00.58
 P.T. STA = 44+44.58
 ATTAIN S.E. - STA. 34+35.58 TO STA. 36+60.58
 REMOVE S.E. - STA. 43+84.58 TO STA. 45+74.29

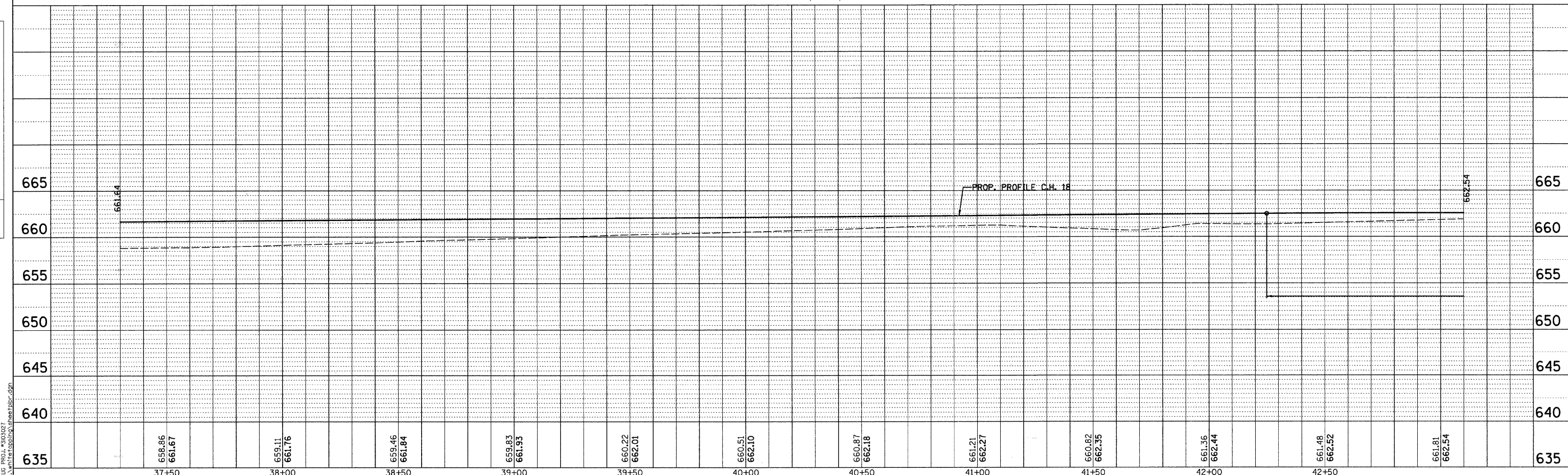
PIPE CULVERTS, TYPE I, CORRUGATED STEEL OR ALUM., 18"-30" L.F.
 U.S.F.L. 29.98' RT, 40+38.65, ELEV: 659.09
 D.S.F.L. 30.10' RT, 40+09.03, ELEV: 659.01
 2 METAL END SECTIONS, 18"



- INCIDENTAL HOT-MIX ASPHALT SURFACING
- AGGREGATE SURFACE COURSE, TYPE B
- PCC DRIVEWAY PAVEMENT 8"

| | | |
|------|----------|------|
| PLAN | SURVEYED | DATE |
| | PLOTTED | |
| | CHECKED | |
| | BY | |
| | NO. | |

| | | |
|---------|----------|------|
| PROFILE | SURVEYED | DATE |
| | PLOTTED | |
| | CHECKED | |
| | BY | |
| | NO. | |



T:\S\PROJ\1010027\1010027.dgn
 11/15/2007 10:10:00 AM