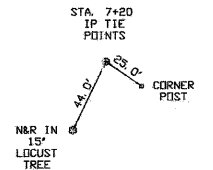
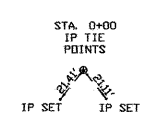
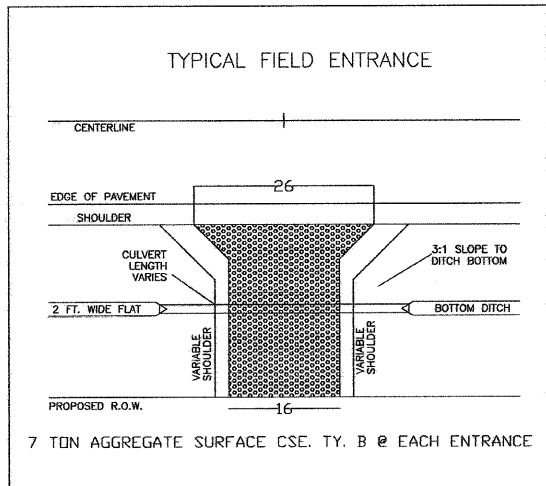
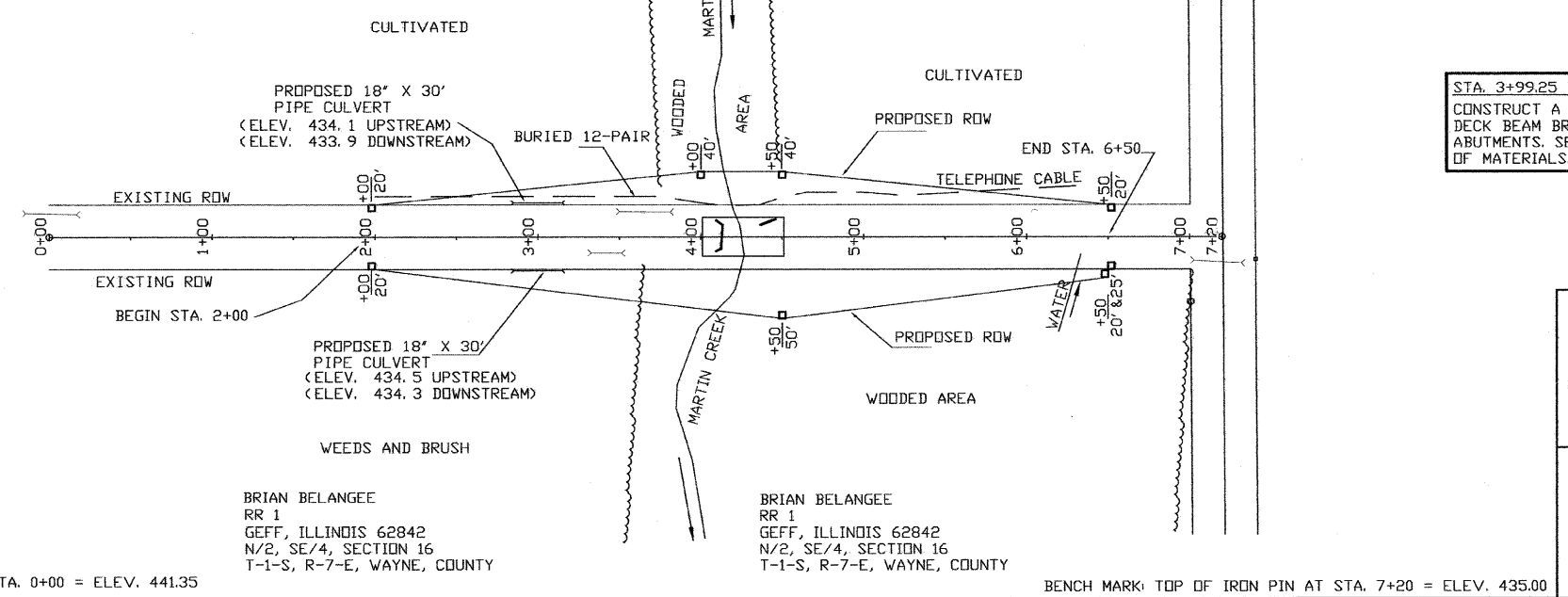


SECTION	COUNTY	TOTAL SHEETS	SHEET NO.
04-14106-00-BR	WAYNE	12	2
TOWNSHIP ROAD 331			
MARTIN CREEK BRIDGE CONTRACT NO. 95544			

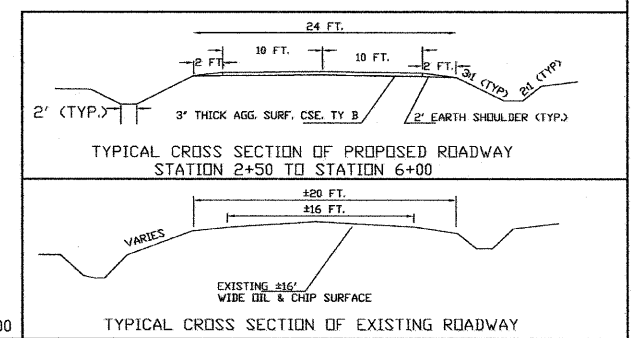


CYNTHIA CUTRIGHT  
398 LEIGHTON COURT  
LEHIGH, FL 33972  
SE/4, NE/4, SECTION 16  
T-1-S, R-7-E, WAYNE COUNTY



STA. 3+99.25 TO STA. 4+50.75 PROP. SN 096-3444  
CONSTRUCT A SINGLE SPAN PRECAST PRESTRESSED CONCRETE DECK BEAM BRIDGE WITH CONCRETE, PILE BENT, SPILL THRU ABUTMENTS. SEE SHEETS 5 - 12 FOR BRIDGE DETAILS AND BILL OF MATERIALS.

**UTILITIES**  
WAYNE-WHITE ELECTRIC COOP.  
ROUTE 45 WEST  
FAIRFIELD, ILLINOIS  
(618)842-2196  
ERIN HANLEY, ENGINEER  
  
BOYLESTON WATERWORKS  
BILL YOUNG, OPERATOR  
CELL PHONE (618)237-0164  
HOME (618)842-2918  
  
WABASH TELEPHONE CO.  
TODD A. FENDER  
PHONE (618)665-3311  
LOUISVILLE, ILLINOIS

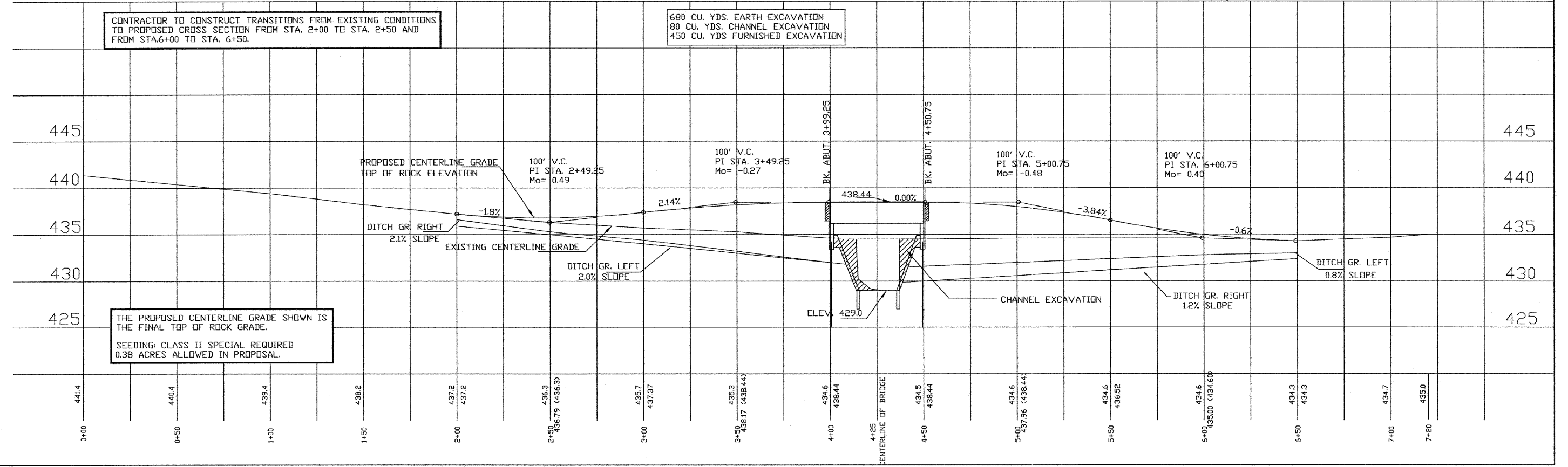


BENCH MARK: TOP OF IRON PIN AT STA. 0+00 = ELEV. 441.35

BENCH MARK: TOP OF IRON PIN AT STA. 7+20 = ELEV. 435.00

CONTRACTOR TO CONSTRUCT TRANSITIONS FROM EXISTING CONDITIONS TO PROPOSED CROSS SECTION FROM STA. 2+00 TO STA. 2+50 AND FROM STA. 6+00 TO STA. 6+50.

680 CU. YDS. EARTH EXCAVATION  
80 CU. YDS. CHANNEL EXCAVATION  
450 CU. YDS. FURNISHED EXCAVATION



THE PROPOSED CENTERLINE GRADE SHOWN IS THE FINAL TOP OF ROCK GRADE.  
SEEDING: CLASS II SPECIAL REQUIRED  
0.38 ACRES ALLOWED IN PROPOSAL.