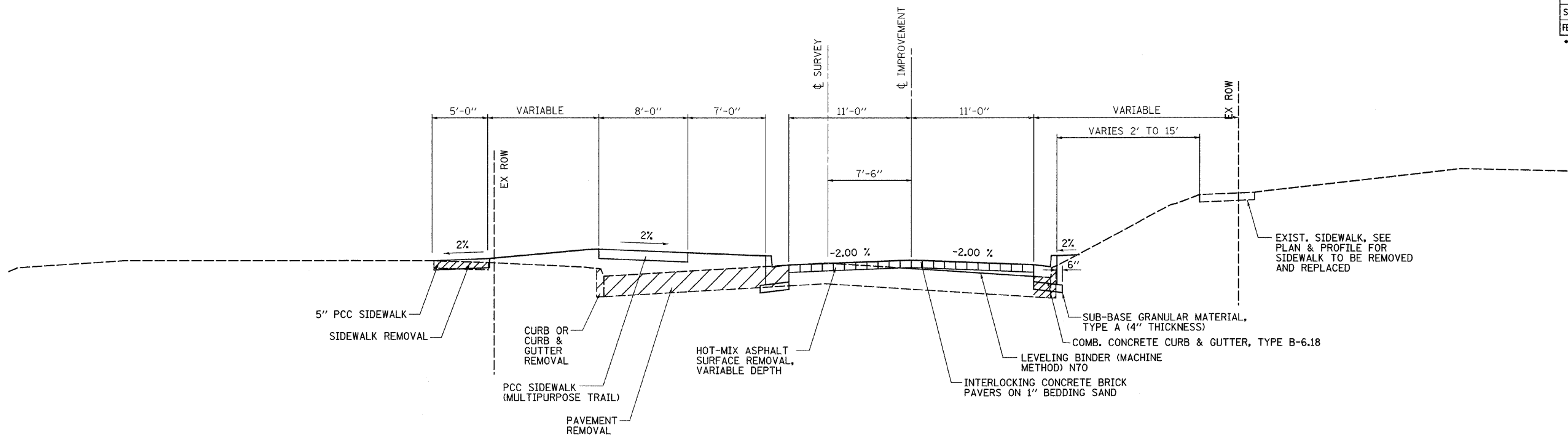
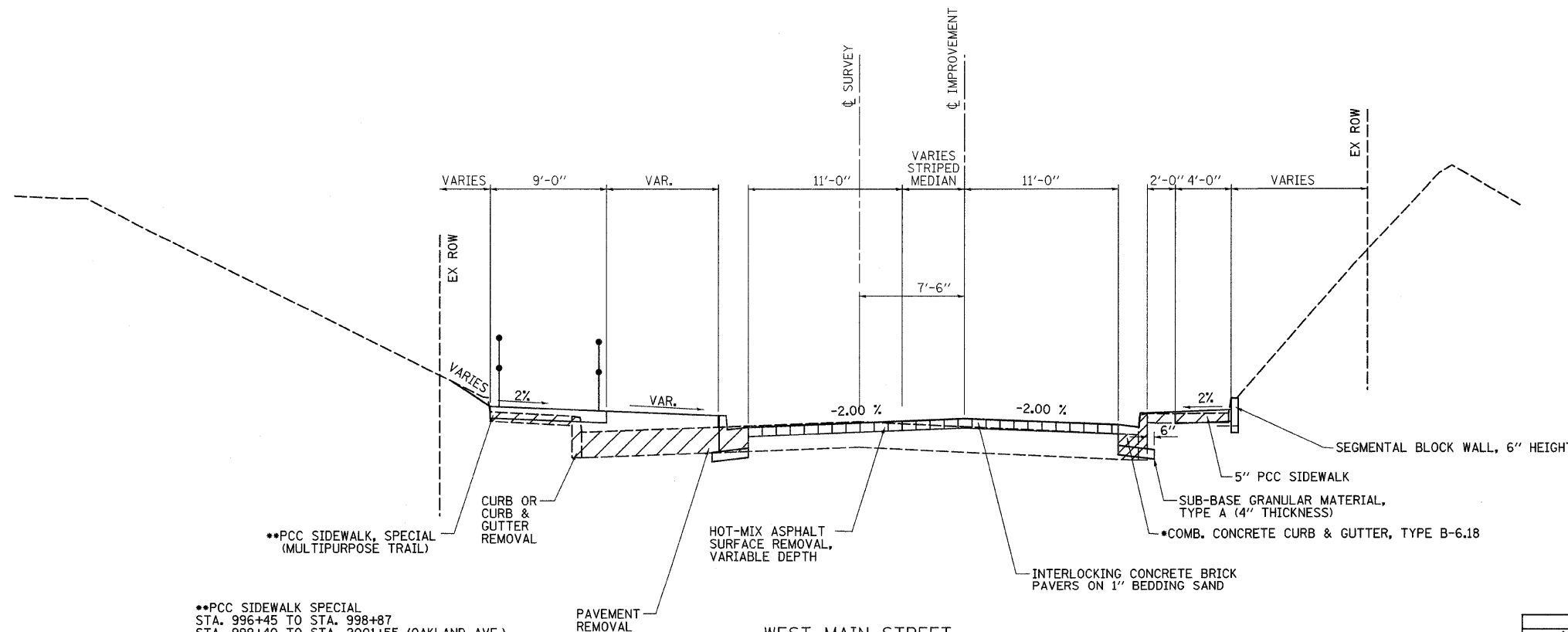


F.A. RTE.	SECTION	COUNTY	TOTAL SHEETS	SHEET NO.
**	**	MACON	106	10
STA.		TO STA.		
FED. ROAD DIST. NO.	ILLINOIS	FED. AID PROJECT		
** 05-00525-00SW				



WEST MAIN STREET  
STA 991+50 TO STA 996+00



WEST MAIN STREET  
STA 996+00 TO STA 998+50

\*\*PCC SIDEWALK SPECIAL  
STA. 996+45 TO STA. 998+87  
STA. 999+40 TO STA. 2001+55 (OAKLAND AVE.)

• COMBINATION CURB & GUTTER,  
TYPE B-9.18, LT STATION 998+00  
TO STATION 999+00 TRANSITION  
IN 10'.

REVISIONS	
NAME	DATE

ILLINOIS DEPARTMENT OF TRANSPORTATION

PROPOSED TYPICAL  
CROSS SECTION

SCALE: VERT. 1"=5'  
HORIZ. 1"=2.5'  
DATE 5-1-07

DRAWN BY LCH  
CHECKED BY

PLOT DATE = 2/26/2008  
FILE NAME = P:\069695\Drawings\Tjrcola\Tjrcola.dgn  
DATE = 2/26/08  
USER NAME = Tjrcola