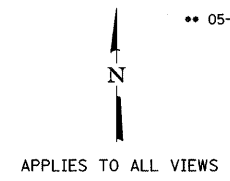


F.A. RTE.	SECTION	COUNTY	TOTAL SHEETS	SHEET NO.
**	**	MACON	106	20
STA. TO STA.		FED. ROAD DIST. NO. ILLINOIS FED. AID PROJECT		

05-00525-00SW



NOTE:
STATION AND OFFSET CALLOUTS
ARE FROM C OF SURVEY.

TBM 18: CHISELED "X" IN TOP NE COR OF CONC. WALK TO 1087 WEST MAIN ST. ELEV 664.68

TBM 19: TOP FLANGE BOLT NEXT TO "M" IN MUELLER ON FIRE HYDRANT AT WEST SIDE OF OAKLAND AVENUE ACROSS FROM MILLIKIN COFFEE HOUSE. ELEV 652.44

TBM 20: TOP FLANGE BOLT NEXT TO "M" IN MUELLER ON FIRE HYDRANT AT EAST SIDE OF OAKLAND AVENUE ACROSS FROM GRISWALD PHYSICAL ED CENTER. ELEV 648.25

TBM 24: TOP FLANGE BOLT NEXT TO "M" IN MUELLER ON FIRE HYDRANT AT SE COR OF OAKLAND AVENUE & WEST MAIN ST. INTERSECTION. ELEV 665.09

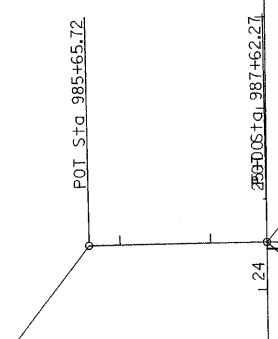
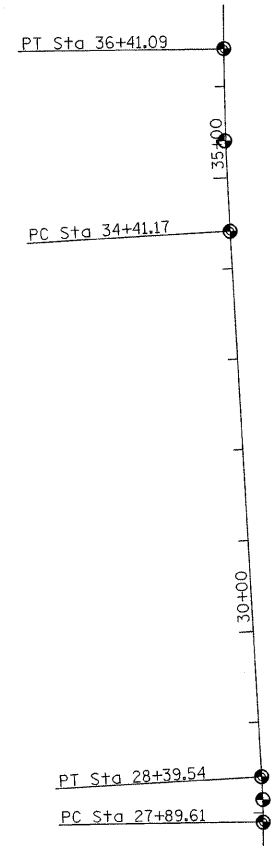
TBM 26: TOP FLANGE BOLT NEXT TO "M" IN MUELLER ON FIRE HYDRANT AT SW COR OF FAIRVIEW AVENUE & WILLIAM STREET. ELEV 643.09

TBM 27: TOP FLANGE BOLT NEXT TO "M" IN MUELLER ON FIRE HYDRANT ON EAST SIDE OF FAIRVIEW AVE. IN FRONT OF ADM SCOVILL HALL. ELEV 661.96

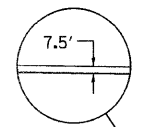
TBM 28: TOP FLANGE BOLT NEXT TO "M" IN MUELLER ON FIRE HYDRANT AT NE COR OF WEST MAIN ST. & FAIRVIEW INTERSECTION. ELEV 667.64

TBM 29: TOP FLANGE BOLT NEXT TO "M" IN MUELLER ON FIRE HYDRANT ON NORTH SIDE OF WEST MAIN ST. ACROSS FROM 1177 W. MAIN ELEV 665.31

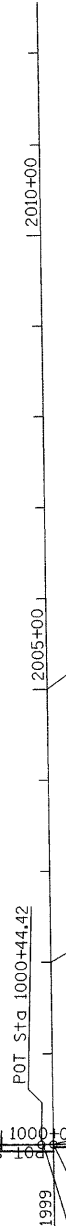
LEGEND
● EXISTING BRASS PLATE



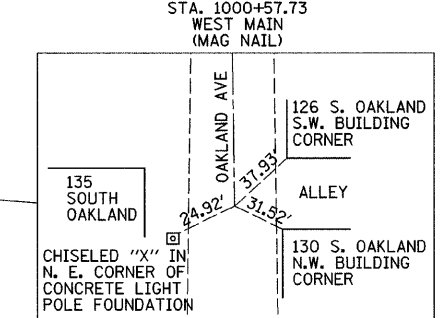
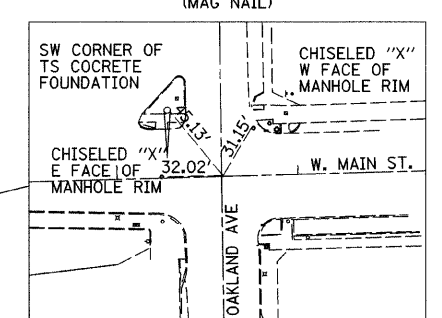
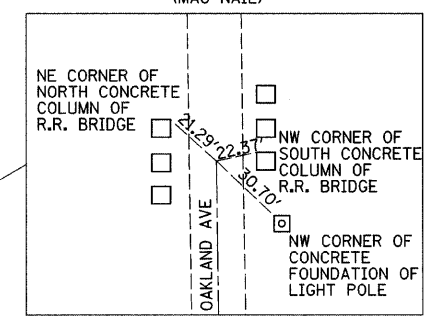
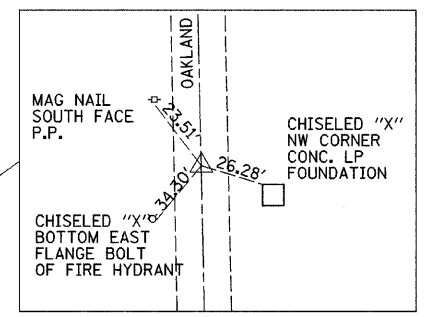
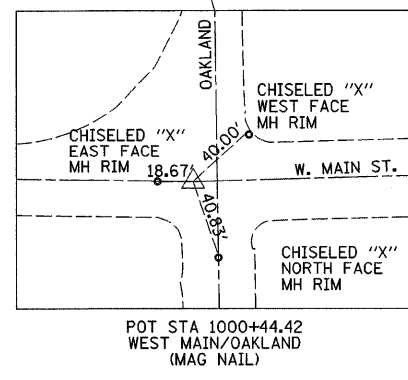
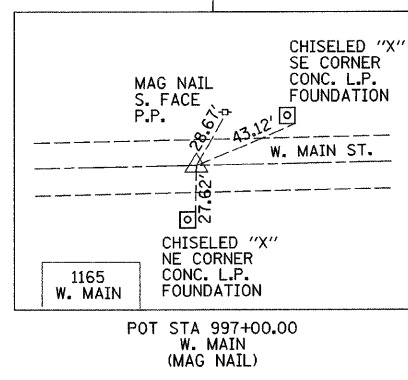
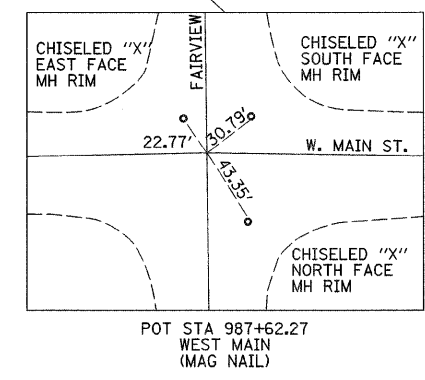
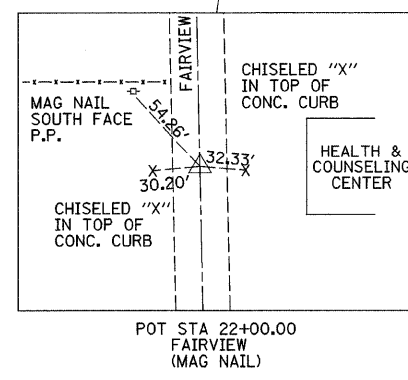
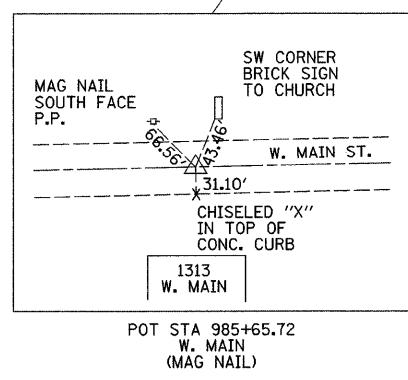
STA 987-62.27 (WEST MAIN ST)
STA 24+52.60 (FAIRVIEW AVE)



CL SURVEY
CL IMPROVEMENT



STA 1000+57.73 (WEST MAIN ST)
STA 2000+00.00 (OAKLAND AVE)



REV. NO.	DESCRIPTION	BY	DATE	APPROVED
ALIGNMENT AND CONTROL TIES				
DESIGN BWC	WEST MAIN STREET PHASE II CITY OF DECATUR			SCALE
DATE 11/07				BWC PROJECT NO.
DRAWN MLD	DATE 11/07	DATE	11/4/07	
CHECKED	BWC BLANK, WESSELINK, COOK & ASSOCIATES INC.			1 OF 1
DATE				ARCHITECTS
APPROVED	2623 EAST PERSHING ROAD, DECATUR, IL 62524			
DATE	1217 428-0973 FAX 1217428-8934			
CLIENT				
APPR.				
DATE				